

Received 2-6-08

R/W PROJECT NUMBER 5220-04-21	SHEET NUMBER 4.1	TOTAL SHEETS 16
FEDERAL PROJECT NUMBER		
PLAT OF RIGHT-OF-WAY REQUIRED FOR WEST AVENUE, CITY OF LA CROSSE GREEN BAY ST.-LA CROSSE ST. S.T.H. 35 LA CROSSE CO.		
CONSTRUCTION PROJECT NUMBER 5220-04-71		

CONVENTIONAL SIGNS AND ABBREVIATIONS

- A.P. ACCESS POINT
- AC ACRES
- AG AGRICULTURAL
- ALUM. ALUMINUM
- ANT ANTENNA
- B. BARN
- BLDG BUILDING
- CL CENTERLINE
- CONC CONCRETE
- COR. CORNER
- C.S.M. CERTIFIED SURVEY MAP
- C.T.H. COUNTY TRUNK HIGHWAY
- DOC. DOCUMENT
- EASE. EASEMENT
- ET.AL. AND OTHERS
- FDN FOUNDATION
- FE FIELD ENTRANCE
- FRL. FRACTIONAL
- G GARAGE
- GP GAS PUMPS
- GRAV GRAVEL
- GV GAS
- HSE HOUSE
- IP IRON PIPE OR PIN
- L LENGTH OF CURV
- LC LONG CHORD OR
- LCB LONG CHORD BEA
- LT LEFT
- MH MANHOLE
- MON. MONUMENT
- O.L. OUTLOT
- P. PAGE
- PC POINT OF CURVATL
- PE PRIVATE ENTRANCE
- PI POINT OF INTERSEC
- PK PARKER-KALON FAS
- P.L. PROPERTY LINE
- P.L.E. PERMANENT LIMITED
- PT POINT OF TANGENC
- R RADIUS OR RANGE
- R.D.E. RESTRICTED DEVELO
- REM. REMAINING
- RL REFERENCE LINE
- RT RIGHT
- R/W RIGHT OF WAY
- S SHED
- SEC. SECTION
- SEPV SEPTIC VENT
- S.T.H. STATE TRUNK HIGHWAY
- STA. STATION
- T TANGENT LENGTH OF CURVE OR TOWN
- TAV TAVERN
- T.L.E. TEMPORARY LIMITED EASEMENT
- U.S.H. UNITED STATES HIGHWAY
- V. VOLUME
- W WALL
- X EAST COORDINATE (GRID)
- Y NORTH COORDINATE (GRID)
- N NORTH COORDINATE (GROUND) OR NORTH
- E EAST COORDINATE (GROUND), EAST OR EXTERNAL
- Δ CENTRAL ANGLE OR DELTA

- STATE LINE
- COUNTY LINE
- TOWN OR RANGE LINE
- SECTION LINE
- QUARTER LINE
- SIXTEENTH LINE
- PROPOSED OR NEW R/W LINE
- EXISTING R/W LINE
- LOT LINE
- P.L. ± 58.1 PROPERTY LINE
- ◆◆◆◆ NO ACCESS (By Previous Acquisition)
- ◆◆◆◆ NO ACCESS (By Previous Acquisition)

- (Symbol) SECTION CORNER
- (608) ○ RIGHT OF WAY POINT (NOT MONUMENTED)
- (243) ● RIGHT OF WAY POINT (MONUMENTED)
- IP (Type) RECOVERED IRON PIN/PIPE
- △ TRIANGULATION POINT OR HORIZONTAL CONTROL STATION
- INLET
- HYDRANT
- (Size)_W WATER
- (Size)_G GAS
- T— TELEPHONE OR TELEGRAPH
- E— ELECTRIC
- TV— CABLE TELEVISION
- FO— FIBER OPTIC
- (Size)_{SAN} SANITARY SEWER
- (Size)_{SS} STORM SEWER
- (Symbol) NOTATION FOR COMBUSTIBLE FLUIDS
- (Label) SERVICE PEDESTAL
- (Label) SILO, MANHOLE OR WELL, ETC.

- +—+—+— RAILROAD
- (Symbol) BRIDGE
- (Label) BUILDING
- (Label) FOUNDATION OR RUINS
- X—X— FENCE
- (Symbol) MARSH AREA
- (Symbol) LAKE OR POND
- (Symbol) WOODED OR SHRUB AREA
- (Symbol) TREE
- (Symbol) BUILDING TO BE REMOVED

previous sfts 2-7-08
are in the
Storage room
cabinet.
DPL

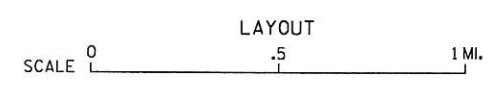
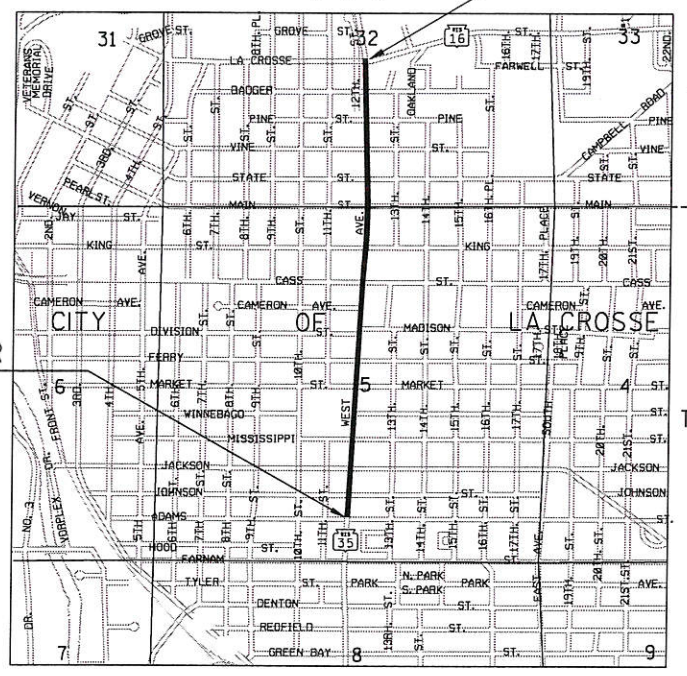
- COMPENSABLE NON COMPENSABLE
- TELEPHONE POLE
 - TELEPHONE POLE
 - POWER POLE
 - POWER POLE

END RELOCATION ORDER
STA. 628+37.23

Y= 133540.405
X= 448491.483
2091.64 FEET NORTH AND 42.56 FEET WEST OF THE SOUTH 1/4 CORNER OF SECTION 32, T16N, R7W.

BEGIN RELOCATION ORDER
STA. 563+00

Y= 127010.694
X= 448291.251
611.46 FEET NORTH AND 33.13 FEET EAST OF THE SOUTH 1/4 CORNER OF SECTION 5, T15N, R7W.



TOTAL NET LENGTH OF CENTERLINE = 1.238 MI.

NOTES:
COORDINATES AND BEARINGS ON THIS PLAT ARE ORIENTED TO THE WISCONSIN COUNTY COORDINATE SYSTEM, LA CROSSE COUNTY (ENGLISH) NAD 83, 1991 ADJUSTMENT. ALL DISTANCES ARE GROUND LENGTH.
RIGHT OF WAY MONUMENTS ARE TYPE-2 (3/4" X 24" REINFORCEMENT BAR WEIGHING 1502 LB/FT) AND ARE PLACED PRIOR TO THE COMPLETION OF THE PROJECT
RIGHT OF WAY BOUNDARIES ARE DEFINED WITH COURSES OF THE PERIMETER OF THE HIGHWAY LANDS REFERENCED TO THE U.S. PUBLIC LAND SURVEY OR OTHER SURVEYS OF PUBLIC RECORD.

ORIGINAL PLANS PREPARED BY

421 FRENETTE DRIVE
CHIPPEWA FALLS, WI 54729

DATE: _____ (Signature)

REVISION DATE
12-4-2006 N.C.
9-11-2007 N.C.

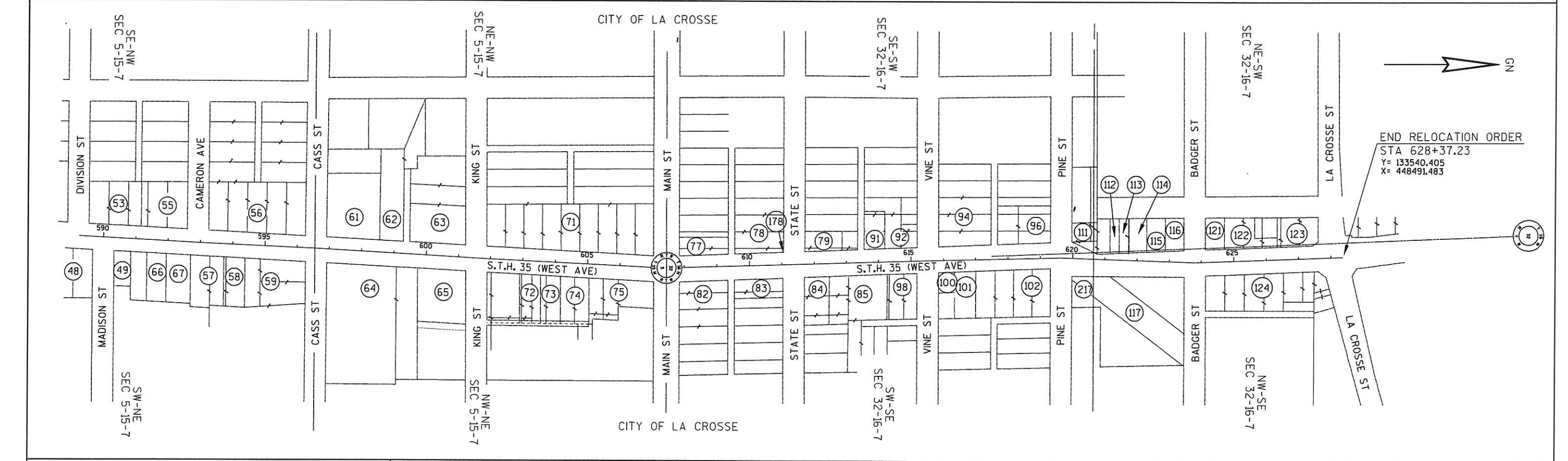
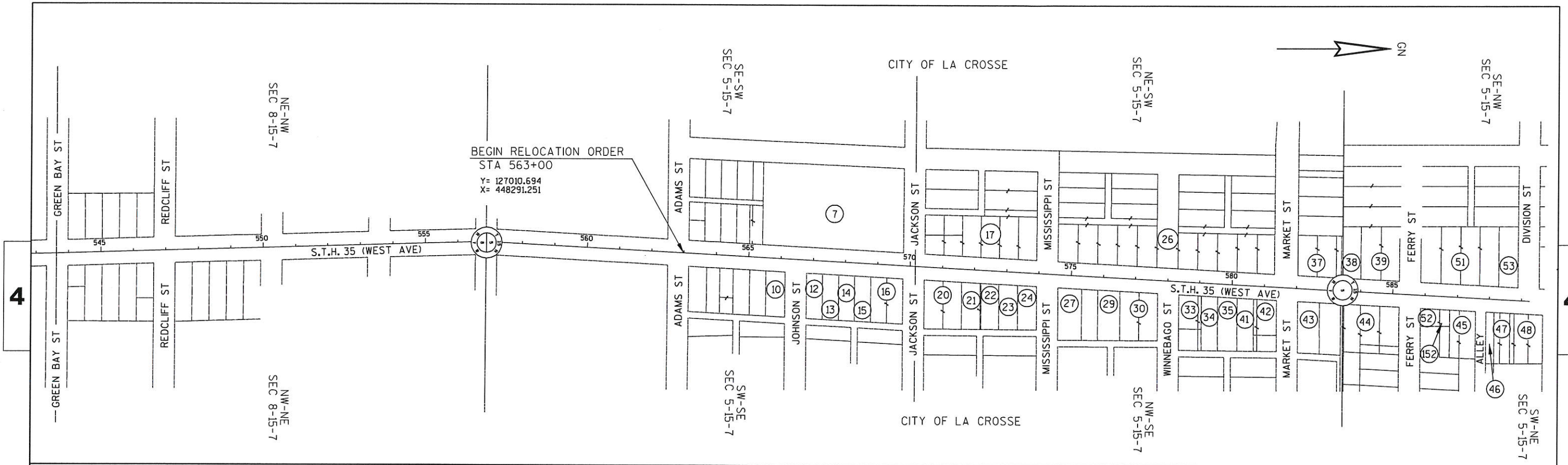
97

CITY OF LA CROSSE

APPROVED FOR CITY OF LA CROSSE

DATE: _____ (Signature)

E



REVISION DATE 12-4-2006 9-11-2007	DATE 3-20-2006	NOT TO SCALE	HWY: S.T.H. 35	STATE R/W PROJECT NUMBER 5220-04-21	PLAT SHEET NO: 4.3
			COUNTY: LA CROSSE	CONSTRUCTION PROJECT NUMBER 5220-04-71	PS&E SHEET

CITY OF LA CROSSE

SE-SW
SEC 5-15-7



R/W COURSE TABLE		
COURSE	BEARING	DISTANCE
464-800	N89°47'21"W	42.98'
464-1086	N89°47'21"W	39.53'
1086-800	N89°47'21"W	3.45'

1/4 LINE TIE TO R STA 563+00		
COURSE	BEARING	DISTANCE
901-969	N03°07'40"E	612.35'
969-436	N86°52'20"W	0.28'

R/W COURSE TABLE		
COURSE	BEARING	DISTANCE
804-805	S44°51'34"E	16.59'
806-807	S43°47'56"W	20.84'

7 WP 1485339
17-50251-130

CITY OF LA CROSSE
V.115, P.197

BEGIN RELOCATION ORDER
STA 563+00
Y= 127010.694
X= 448291.251

WP 1472421

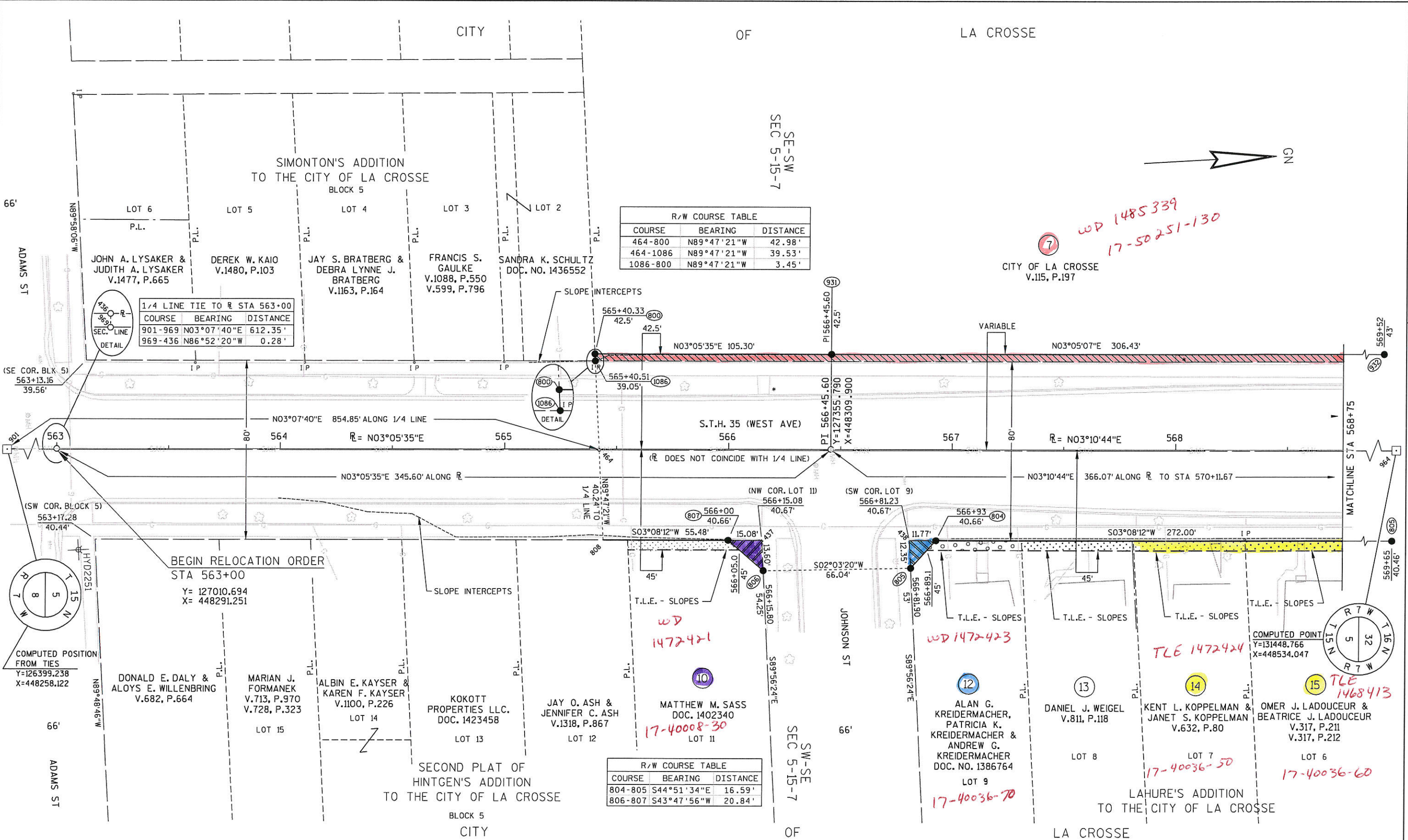
WP 1472423

TLE 1472424

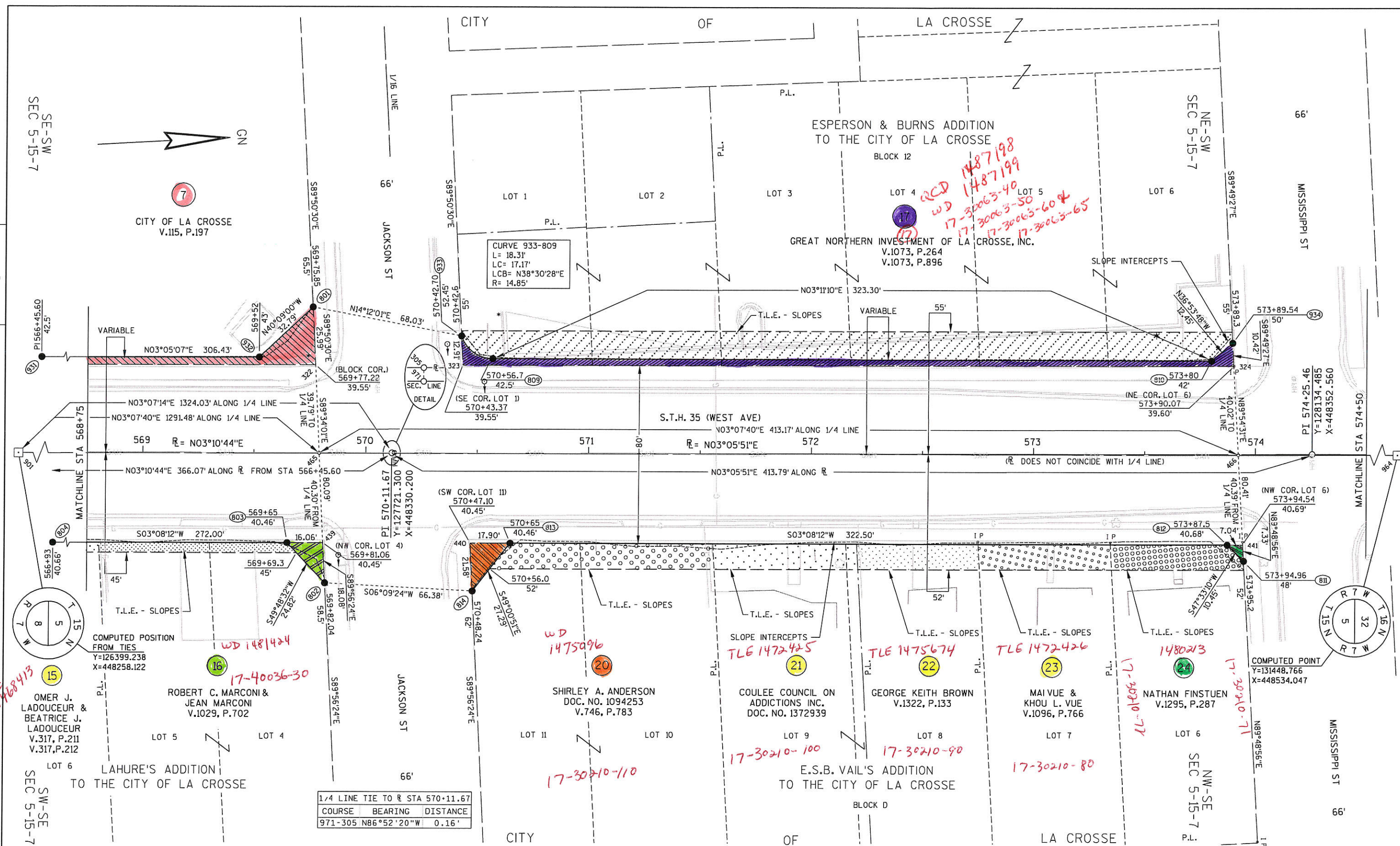
TLE 1468413

17-40036-50

17-40036-60



REVISION DATE 12-4-2006 9-11-2007 N.C.	DATE 3-20-2006	SCALE, FEET 0 20 40	HWY: S.T.H. 35	STATE R/W PROJECT NUMBER 5220-04-21	PLAT SHEET NO: 4.5
GRID FACTOR N/A			COUNTY: LA CROSSE	CONSTRUCTION PROJECT NUMBER 5220-04-71	PS&E SHEET

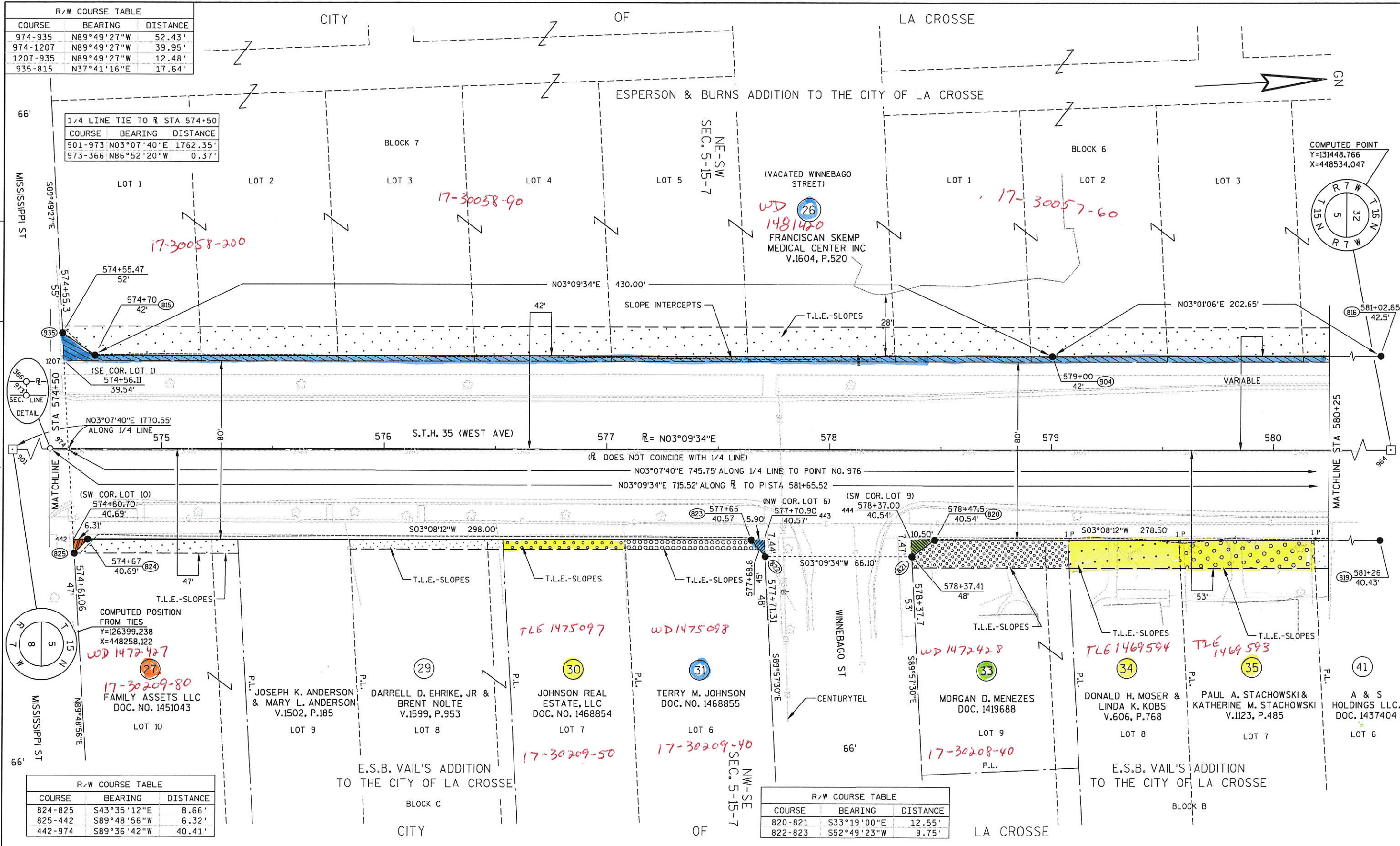


REVISION DATE 12-4-2006 9-11-2007	DATE 3-20-2006	SCALE, FEET 0 20 40	HWY: S.T.H. 35	STATE R/W PROJECT NUMBER 5220-04-21	PLAT SHEET NO: 4.6
GRID FACTOR N/A			COUNTY: LA CROSSE	CONSTRUCTION PROJECT NUMBER 5220-04-71	PS&E SHEET

R/W COURSE TABLE		
COURSE	BEARING	DISTANCE
974-935	N89°49'27"W	52.43'
974-1207	N89°49'27"W	39.95'
1207-935	N89°49'27"W	12.48'
935-815	N37°41'16"E	17.64'

1/4 LINE TIE TO R STA 574+50		
COURSE	BEARING	DISTANCE
901-973	N03°07'40"E	1762.35'
973-366	N86°52'20"W	0.37'

R/W COURSE TABLE		
COURSE	BEARING	DISTANCE
824-825	S43°35'12"E	8.66'
825-442	S89°48'56"W	6.32'
442-974	S89°36'42"W	40.41'



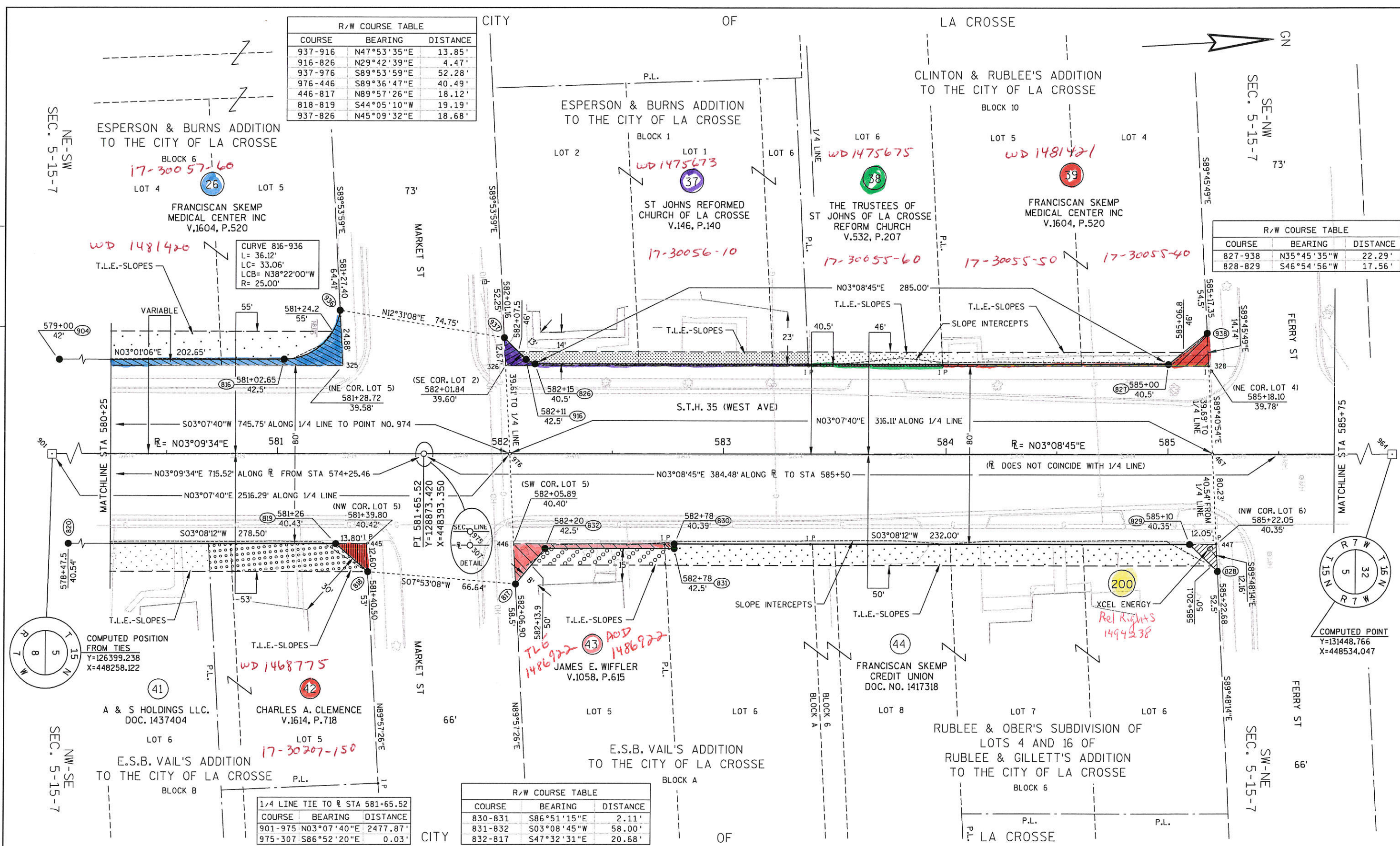
REVISION DATE 12-4-2006 9-11-2007	DATE 3-20-2006	SCALE, FEET 0 20 40	HWY: S.T.H. 35	STATE R/W PROJECT NUMBER 5220-04-21	PLAT SHEET NO: 4.7
	GRID FACTOR N/A		COUNTY: LA CROSSE	CONSTRUCTION PROJECT NUMBER 5220-04-71	PS&E SHEET

R/W COURSE TABLE		
COURSE	BEARING	DISTANCE
937-916	N47°53'35"E	13.85'
916-826	N29°42'39"E	4.47'
937-976	S89°53'59"E	52.28'
976-446	S89°36'47"E	40.49'
446-817	N89°57'26"E	18.12'
818-819	S44°05'10"W	19.19'
937-826	N45°09'32"E	18.68'

R/W COURSE TABLE		
COURSE	BEARING	DISTANCE
827-938	N35°45'35"W	22.29'
828-829	S46°54'56"W	17.56'

R/W COURSE TABLE		
COURSE	BEARING	DISTANCE
830-831	S86°51'15"E	2.11'
831-832	S03°08'45"W	58.00'
832-817	S47°32'31"E	20.68'

1/4 LINE TIE TO R STA 581+65.52		
COURSE	BEARING	DISTANCE
901-975	N03°07'40"E	2477.87'
975-307	S86°52'20"E	0.03'



REVISION DATE 12-4-2006 9-11-2007	DATE 3-20-2006	SCALE, FEET 0 20 40	HWY: S.T.H 35	STATE R/W PROJECT NUMBER 5220-04-21	PLAT SHEET NO: 4.8
GRID FACTOR N/A			COUNTY: LA CROSSE	CONSTRUCTION PROJECT NUMBER 5220-04-71	PS&E SHEET

R/W COURSE TABLE - PARCEL 51		
COURSE	BEARING	DISTANCE
468-333	N89°41'00"W	39.68'
333-939	N89°45'49"W	12.23'
939-833	N43°21'22"E	18.91'
833-333	S03°08'12"W	13.83'

R/W COURSE TABLE - PARCEL 52		
COURSE	BEARING	DISTANCE
468-448	S89°41'00"E	40.55'
448-834	N03°08'12"E	12.86'
834-835	S40°25'06"E	16.92'
835-448	N89°48'14"W	11.67'

1/4 LINE TIE TO R STA 585+75		
COURSE	BEARING	DISTANCE
901-977	N03°07'40"E	2887.35'
977-367	S86°52'20"E	0.16'

REVISION DATE	
12-4-2006	
9-11-2007 N.C.	

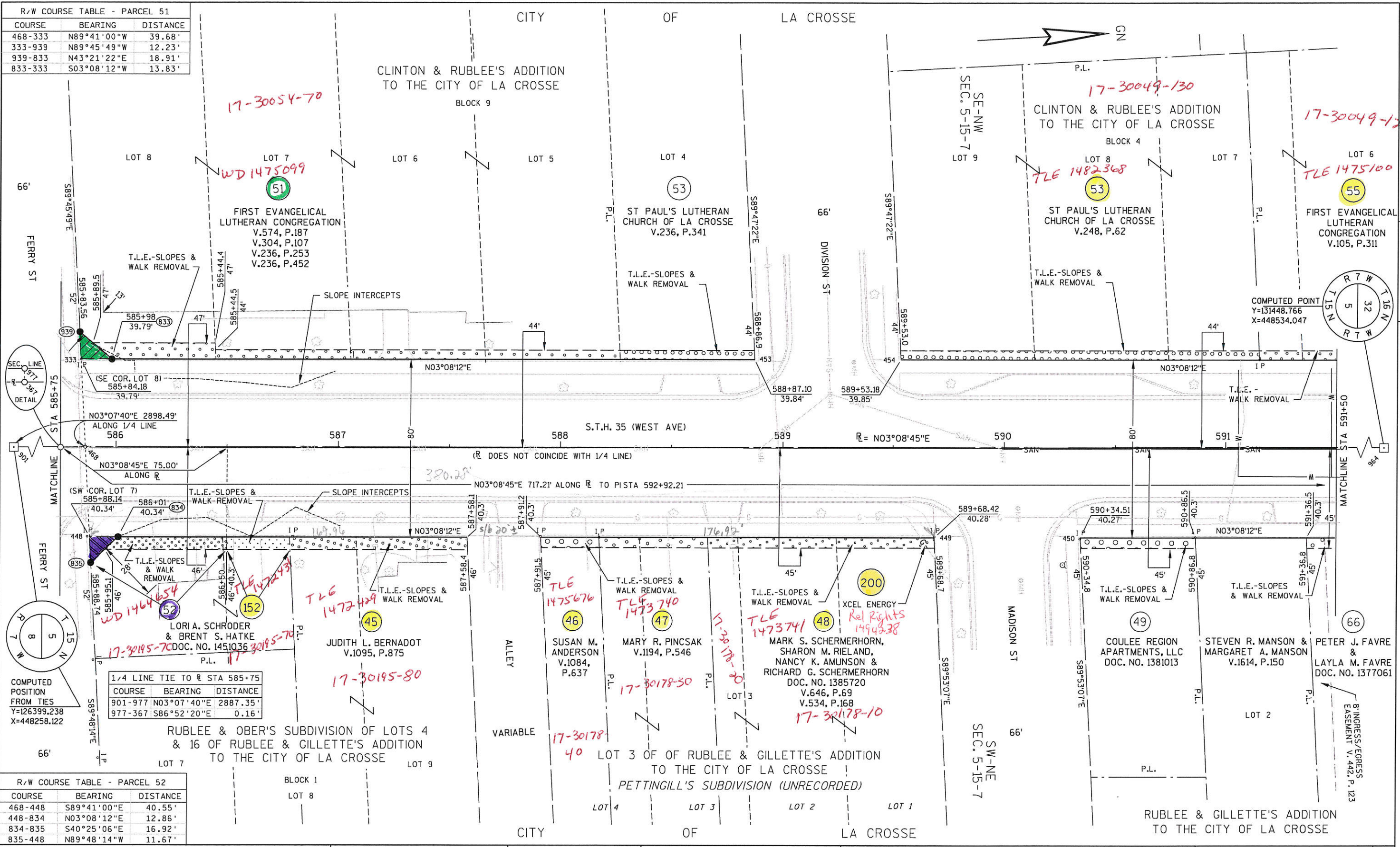
DATE 3-20-2006	
GRID FACTOR	N/A

SCALE, FEET	
0	20 40

HWY: S.T.H. 35	
COUNTY: LA CROSSE	

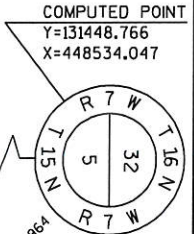
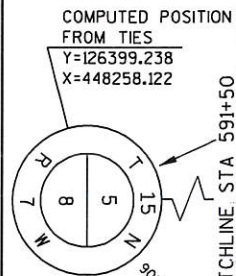
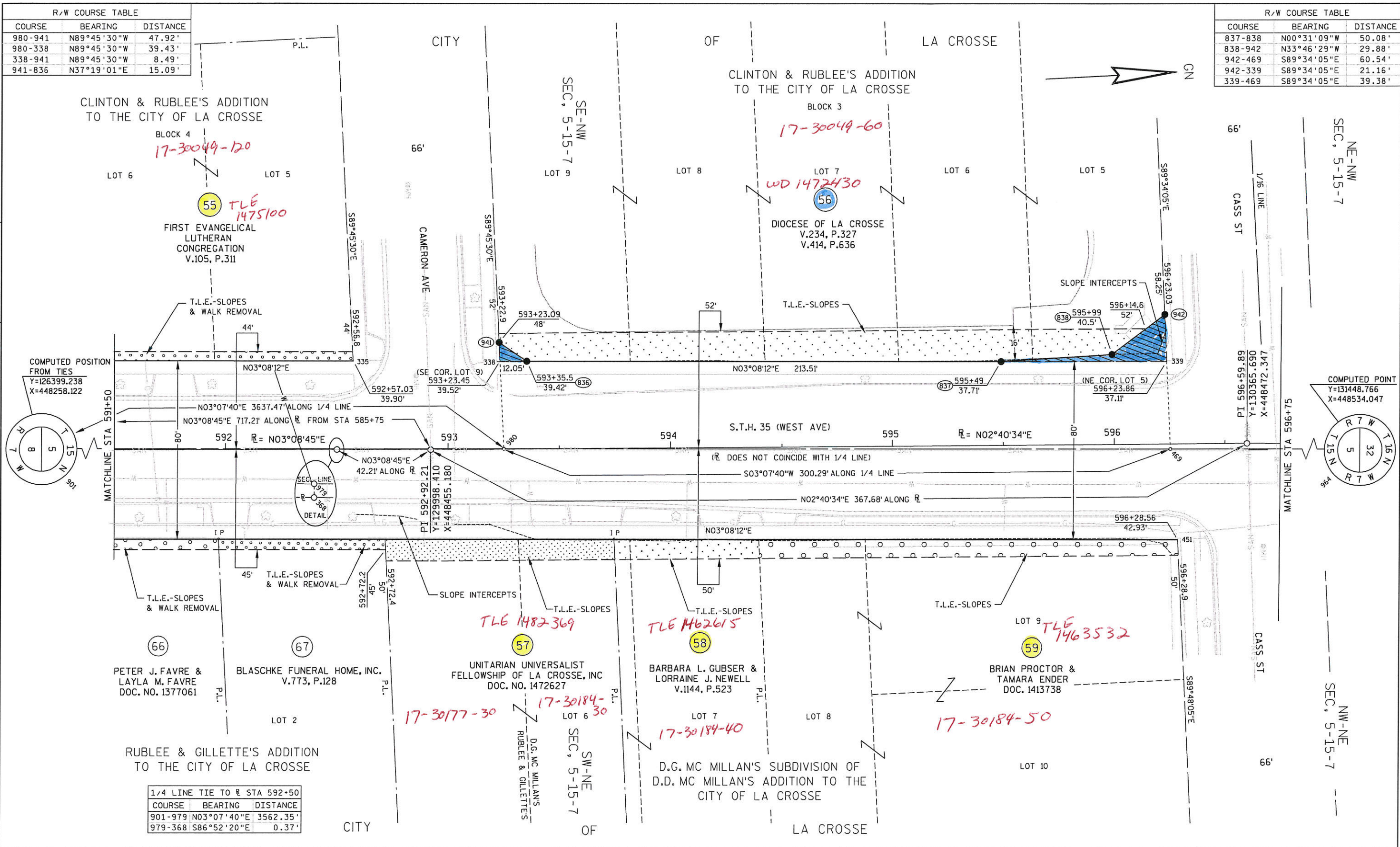
STATE R/W PROJECT NUMBER 5220-04-21	
CONSTRUCTION PROJECT NUMBER 5220-04-71	

PLAT SHEET NO: 4.9	
PS&E SHEET	E



R/W COURSE TABLE		
COURSE	BEARING	DISTANCE
980-941	N89°45'30"W	47.92'
980-338	N89°45'30"W	39.43'
338-941	N89°45'30"W	8.49'
941-836	N37°19'01"E	15.09'

R/W COURSE TABLE		
COURSE	BEARING	DISTANCE
837-838	N00°31'09"W	50.08'
838-942	N33°46'29"W	29.88'
942-469	S89°34'05"E	60.54'
942-339	S89°34'05"E	21.16'
339-469	S89°34'05"E	39.38'



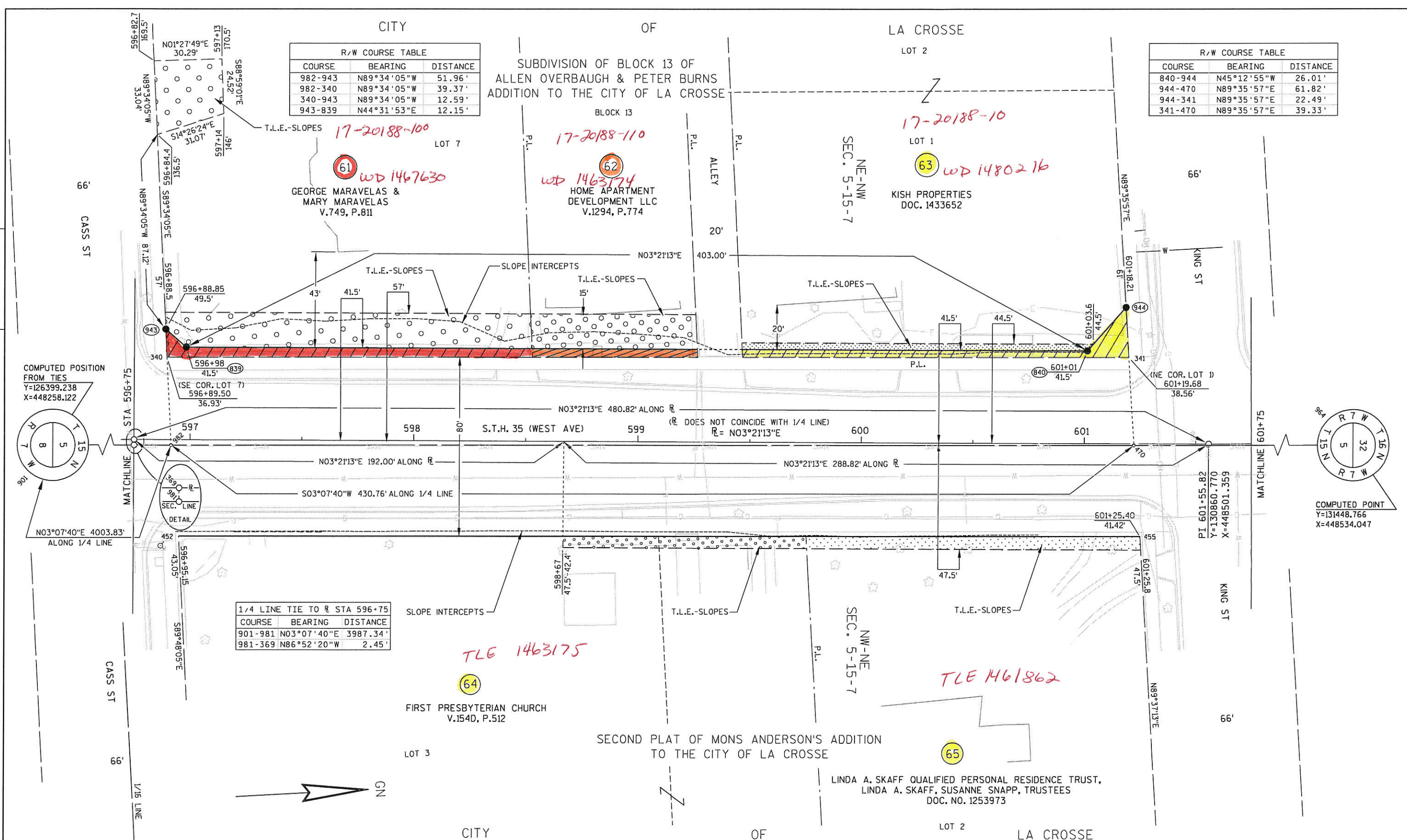
1/4 LINE TIE TO R STA 592+50		
COURSE	BEARING	DISTANCE
901-979	N03°07'40"E	3562.35'
979-368	S86°52'20"E	0.37'

REVISION DATE 12-4-2006 9-11-2007	DATE 3-20-2006	SCALE, FEET 0 20 40	HWY: S.T.H. 35	STATE R/W PROJECT NUMBER 5220-04-21	PLAT SHEET NO: 4.10
GRID FACTOR N/A			COUNTY: LA CROSSE	CONSTRUCTION PROJECT NUMBER 5220-04-71	PS&E SHEET

R/W COURSE TABLE		
COURSE	BEARING	DISTANCE
982-943	N89°34'05"W	51.96'
982-340	N89°34'05"W	39.37'
340-943	N89°34'05"W	12.59'
943-839	N44°31'53"E	12.15'

R/W COURSE TABLE		
COURSE	BEARING	DISTANCE
840-944	N45°12'55"W	26.01'
944-470	N89°35'57"E	61.82'
944-341	N89°35'57"E	22.49'
341-470	N89°35'57"E	39.33'

1/4 LINE TIE TO R STA 596+75		
COURSE	BEARING	DISTANCE
901-981	N03°07'40"E	3987.34'
981-369	N86°52'20"W	2.45'



COMPUTED POSITION FROM TIES
 Y=126399.238
 X=448258.122

COMPUTED POINT
 Y=131448.766
 X=448534.047

REVISION DATE 12-4-2006 9-11-2007	DATE 3-20-2006	SCALE, FEET 0 20 40	HWY: S.T.H. 35	STATE R/W PROJECT NUMBER 5220-04-21	PLAT SHEET NO: 4.11
GRID FACTOR N/A			COUNTY: LA CROSSE	CONSTRUCTION PROJECT NUMBER 5220-04-71	PS&E SHEET

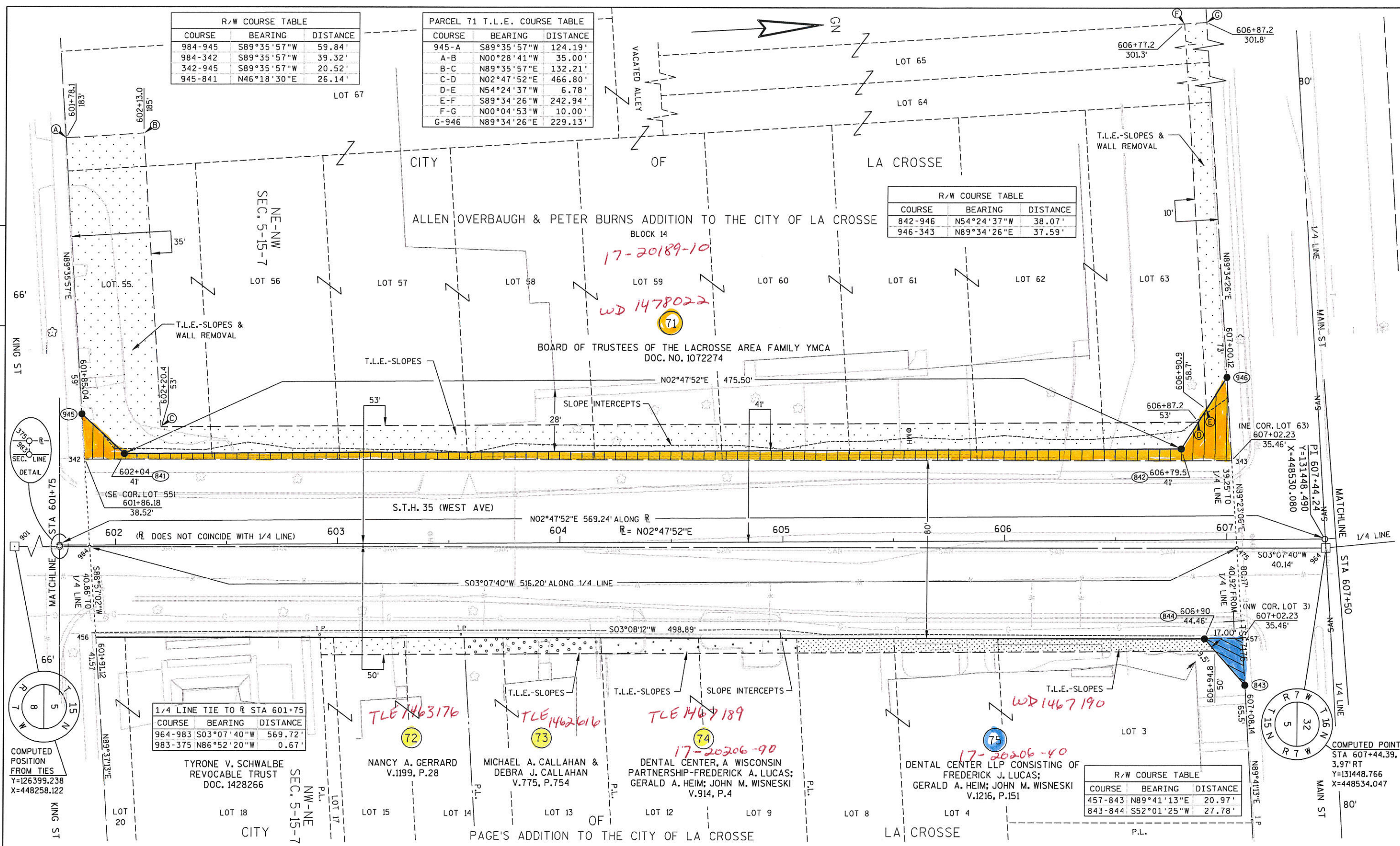
R/W COURSE TABLE		
COURSE	BEARING	DISTANCE
984-945	S89°35'57"W	59.84'
984-342	S89°35'57"W	39.32'
342-945	S89°35'57"W	20.52'
945-841	N46°18'30"E	26.14'

PARCEL 71 T.L.E. COURSE TABLE		
COURSE	BEARING	DISTANCE
945-A	S89°35'57"W	124.19'
A-B	N00°28'41"W	35.00'
B-C	N89°35'57"E	132.21'
C-D	N02°47'52"E	466.80'
D-E	N54°24'37"W	6.78'
E-F	S89°34'26"W	242.94'
F-G	N00°04'53"W	10.00'
G-946	N89°34'26"E	229.13'

R/W COURSE TABLE		
COURSE	BEARING	DISTANCE
842-946	N54°24'37"W	38.07'
946-343	N89°34'26"E	37.59'

1/4 LINE TIE TO R STA 601+75		
COURSE	BEARING	DISTANCE
964-983	S03°07'40"W	569.72'
983-375	N86°52'20"W	0.67'

R/W COURSE TABLE		
COURSE	BEARING	DISTANCE
457-843	N89°41'13"E	20.97'
843-844	S52°01'25"W	27.78'



REVISION DATE 12-4-2006 9-11-2007	DATE 3-20-2006	SCALE, FEET 0 20 40	HWY: S.T.H. 35	STATE R/W PROJECT NUMBER 5220-04-21	PLAT SHEET NO: 4.12
GRID FACTOR N/A			COUNTY: LA CROSSE	CONSTRUCTION PROJECT NUMBER 5220-04-71	PS&E SHEET

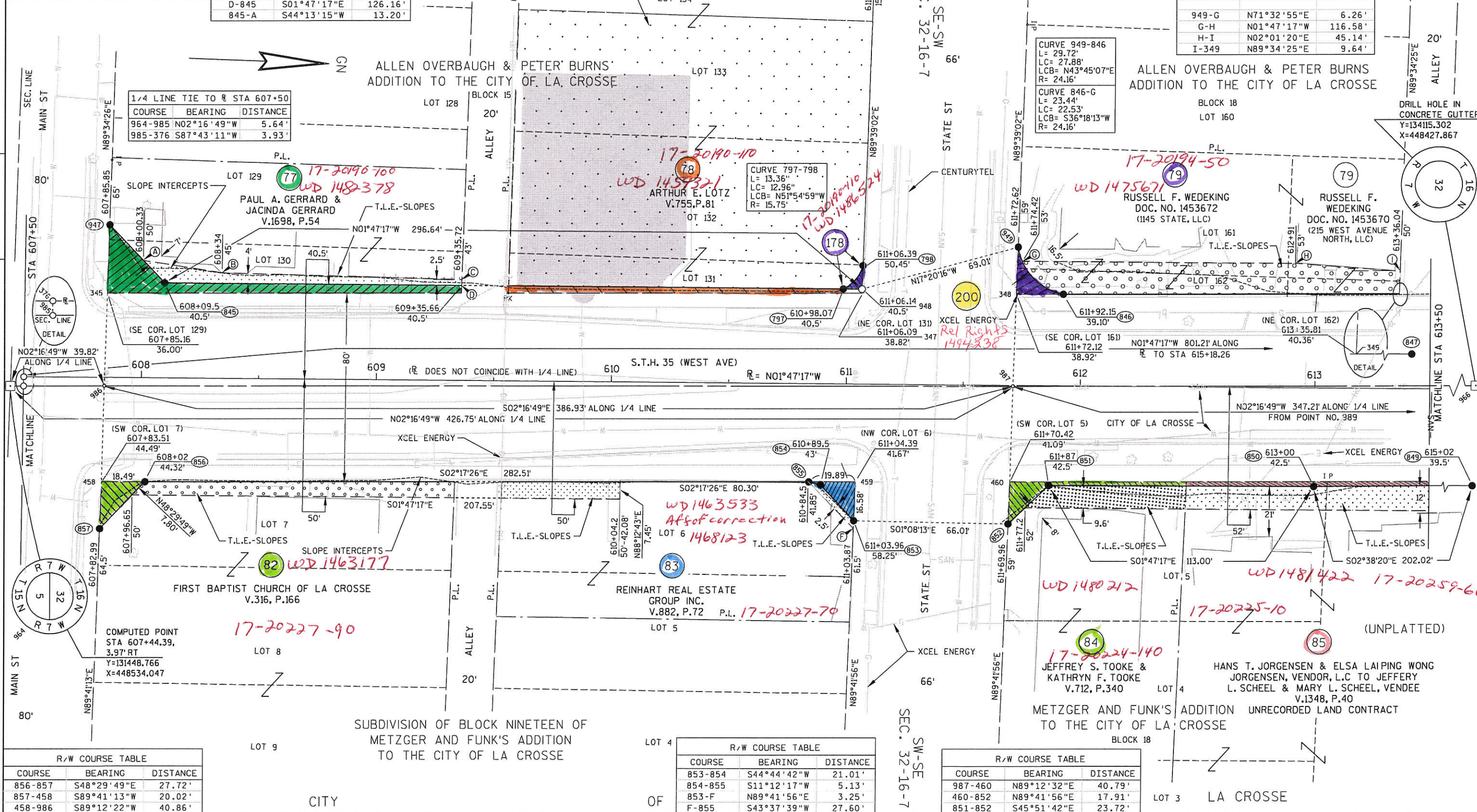
R/W COURSE TABLE		
COURSE	BEARING	DISTANCE
986-947	S89°34'26"W	68.65'
986-345	S89°34'26"W	39.65'
345-947	S89°34'26"W	29.00'
947-845	N44°13'15"E	34.05'

PARCEL 77 T.L.E. COURSE TABLE		
COURSE	BEARING	DISTANCE
947-A	N44°13'15"E	20.85'
A-B	N06°39'30"E	34.04'
B-C	N00°39'42"W	101.74'
C-D	N89°34'26"E	2.50'
D-845	S01°47'17"E	126.16'
845-A	S44°13'15"W	13.20'

PARCEL 178 COURSE TABLE		
COURSE	BEARING	DISTANCE
948-797	S01°47'17"E	8.06'
798-948	N89°39'02"E	9.95'

R/W COURSE TABLE		
COURSE	BEARING	DISTANCE
949-987	N89°39'02"E	59.33'
949-348	S89°39'02"W	20.08'
348-987	S89°39'02"W	39.25'

PARCEL 79 COURSE TABLE		
COURSE	BEARING	DISTANCE
846-348	S02°17'26"E	20.03'
846-847	N02°17'26"W	310.36'
846-349	N02°17'26"W	143.67'
349-847	N02°17'26"W	166.69'
949-G	N71°32'55"E	6.26'
G-H	N01°47'17"W	116.58'
H-I	N02°01'20"E	45.14'
I-349	N89°34'25"E	9.64'



R/W COURSE TABLE		
COURSE	BEARING	DISTANCE
856-857	S48°29'49"E	27.72'
857-458	S89°41'13"W	20.02'
458-986	S89°12'22"W	40.86'

R/W COURSE TABLE		
COURSE	BEARING	DISTANCE
853-854	S44°44'42"W	21.01'
854-855	S11°12'17"W	5.13'
853-F	N89°41'56"E	3.25'
F-855	S43°37'39"W	27.60'

R/W COURSE TABLE		
COURSE	BEARING	DISTANCE
987-460	N89°12'32"E	40.79'
460-852	N89°41'56"E	17.91'
851-852	S45°51'42"E	23.72'

REVISION DATE 12-4-2006 9-11-2007	DATE 3-20-2006	SCALE, FEET 0 20 40	HWY: S.T.H. 35	STATE R/W PROJECT NUMBER 5220-04-21	PLAT SHEET NO: 413
	GRID FACTOR N/A		COUNTY: LA CROSSE	CONSTRUCTION PROJECT NUMBER 5220-04-71	PS&E SHEET

PARCEL 91/92 COURSE TABLE		
COURSE	BEARING	DISTANCE
847-848	N47°59'58"W	25.18'
848-350	N89°29'47"E	18.03'
350-989	N89°56'42"E	39.31'
847-B	S02°17'26"E	146.68'
B-C	S89°34'25"W	12.22'
C-D	N01°47'17"W	156.86'
D-E	N65°16'55"W	15.92'
E-848	N89°29'47"E	7.00'

R/W COURSE TABLE		
COURSE	BEARING	DISTANCE
860-861	N45°20'33"W	7.52'
861-352	N89°31'26"E	5.14'
352-996	N89°25'50"E	39.37'

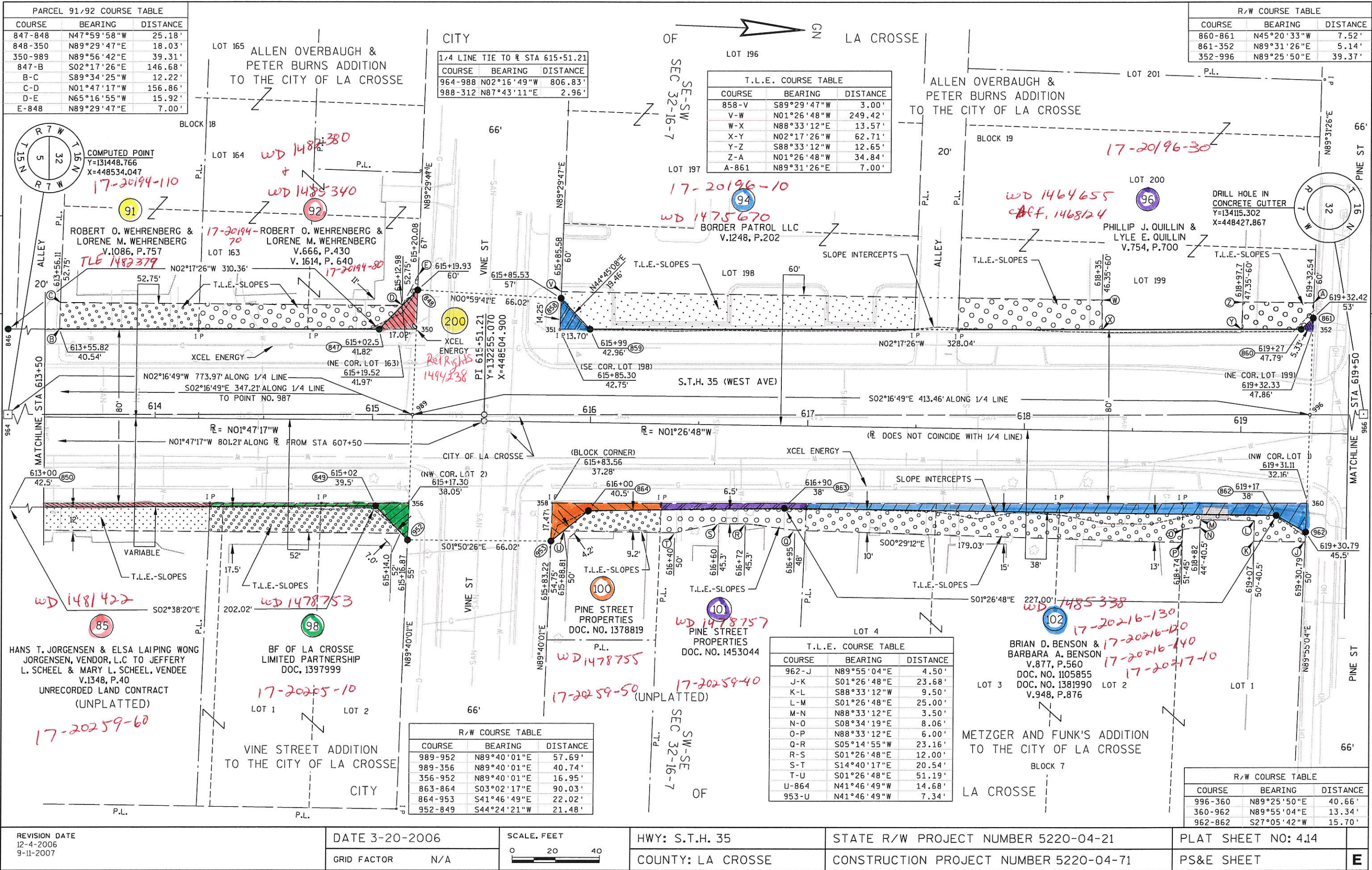
T.L.E. COURSE TABLE		
COURSE	BEARING	DISTANCE
858-V	S89°29'47"W	3.00'
V-W	N01°26'48"W	249.42'
W-X	N88°33'12"E	13.57'
X-Y	N02°17'26"W	62.71'
Y-Z	S88°33'12"W	12.65'
Z-A	N01°26'48"W	34.84'
A-861	N89°31'26"E	7.00'

1/4 LINE TIE TO R STA 615+51.21		
COURSE	BEARING	DISTANCE
964-988	N02°16'49"W	806.83'
988-312	N87°43'11"E	2.96'

R/W COURSE TABLE		
COURSE	BEARING	DISTANCE
989-952	N89°40'01"E	57.69'
989-356	N89°40'01"E	40.74'
356-952	N89°40'01"E	16.95'
863-864	S03°02'17"E	90.03'
864-953	S41°46'49"E	22.02'
952-849	S44°24'21"W	21.48'

T.L.E. COURSE TABLE		
COURSE	BEARING	DISTANCE
962-J	N89°55'04"E	4.50'
J-K	S01°26'48"E	23.68'
K-L	S88°33'12"W	9.50'
L-M	S01°26'48"E	25.00'
M-N	N88°33'12"E	3.50'
N-O	S08°34'19"E	8.06'
O-P	N88°33'12"E	6.00'
P-Q	S05°14'55"W	23.16'
Q-R	S01°26'48"E	12.00'
R-S	S14°40'17"E	20.54'
S-T	S01°26'48"E	51.19'
T-U	N41°46'49"W	14.68'
U-864	N41°46'49"W	7.34'

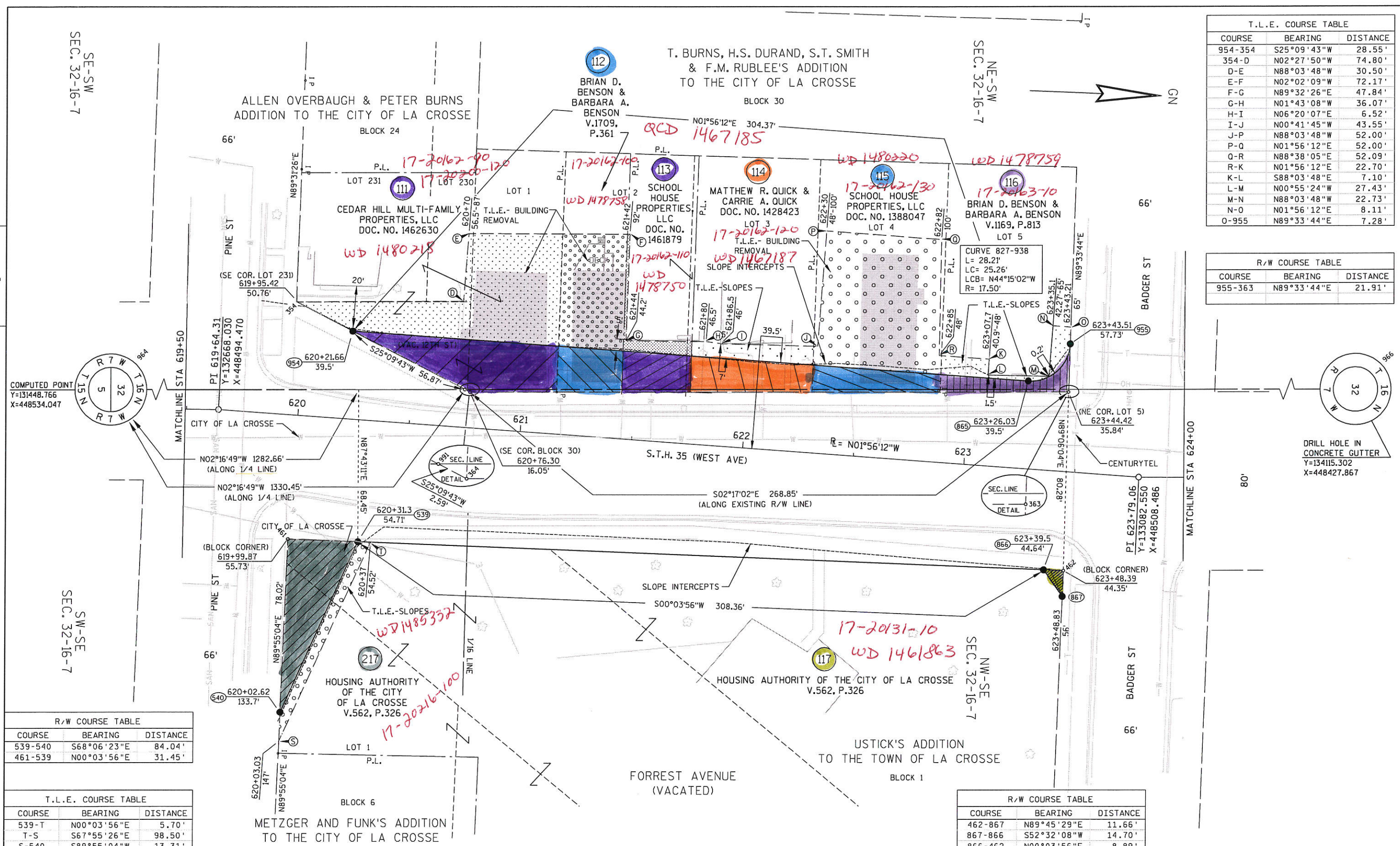
R/W COURSE TABLE		
COURSE	BEARING	DISTANCE
996-360	N89°25'50"E	40.66'
360-962	N89°55'04"E	13.34'
962-862	S27°05'42"W	15.70'



REVISION DATE 12-4-2006 9-11-2007	DATE 3-20-2006	SCALE, FEET 0 20 40	HWY: S.T.H. 35	STATE R/W PROJECT NUMBER 5220-04-21	PLAT SHEET NO: 4.14
GRID FACTOR N/A			COUNTY: LA CROSSE	CONSTRUCTION PROJECT NUMBER 5220-04-71	PS&E SHEET
FILE NAME : P:\UZ\W\idot\045700\CAD\rdsh3511.dgn	PLOT TIME : 2:35:45 PM	PLOT DATE : 11/13/2007	PLOT BY : SEH	PLOT NAME :	PLOT SCALE : N/A

T.L.E. COURSE TABLE		
COURSE	BEARING	DISTANCE
954-354	S25°09'43"W	28.55'
354-D	N02°27'50"W	74.80'
D-E	N88°03'48"W	30.50'
E-F	N02°02'09"W	72.17'
F-G	N89°32'26"E	47.84'
G-H	N01°43'08"W	36.07'
H-I	N06°20'07"E	6.52'
I-J	N00°41'45"W	43.55'
J-P	N88°03'48"W	52.00'
P-Q	N01°56'12"E	52.00'
Q-R	N88°38'05"E	52.09'
R-K	N01°56'12"E	22.70'
K-L	S88°03'48"E	7.10'
L-M	N00°55'24"W	27.43'
M-N	N88°03'48"W	22.73'
N-O	N01°56'12"E	8.11'
O-955	N89°33'44"E	7.28'

R/W COURSE TABLE		
COURSE	BEARING	DISTANCE
955-363	N89°33'44"E	21.91'



COMPUTED POINT
Y=131448.766
X=448534.047

DRILL HOLE IN
CONCRETE GUTTER
Y=134115.302
X=448427.867

R/W COURSE TABLE		
COURSE	BEARING	DISTANCE
539-540	S68°06'23"E	84.04'
461-539	N00°03'56"E	31.45'

T.L.E. COURSE TABLE		
COURSE	BEARING	DISTANCE
539-T	N00°03'56"E	5.70'
T-S	S67°55'26"E	98.50'
S-540	S89°55'04"W	13.31'

R/W COURSE TABLE		
COURSE	BEARING	DISTANCE
462-867	N89°45'29"E	11.66'
867-866	S52°32'08"W	14.70'
866-462	N00°03'56"E	8.89'

REVISION DATE 12-4-2006 9-11-2007	DATE 3-20-2006	SCALE, FEET 0 20 40	HWY: S.T.H. 35	STATE R/W PROJECT NUMBER 5220-04-21	PLAT SHEET NO: 4.15
	GRID FACTOR N/A		COUNTY: LA CROSSE	CONSTRUCTION PROJECT NUMBER 5220-04-71	PS&E SHEET

T.L.E. COURSE TABLE		
COURSE	BEARING	DISTANCE
993-429	S89°33'44"W	7.42'
429-R	N02°04'32"W	113.90'
R-S	N02°09'04"W	14.15'
S-T	N87°50'56"E	8.14'
T-U	N02°17'02"W	87.10'
U-V	S87°50'56"W	5.94'
V-W	N02°09'04"W	123.91'
W-X	S35°11'31"E	10.40'
X-362	S02°17'02"E	330.60'
362-993	S89°33'44"W	1.17'

CITY OF LA CROSSE



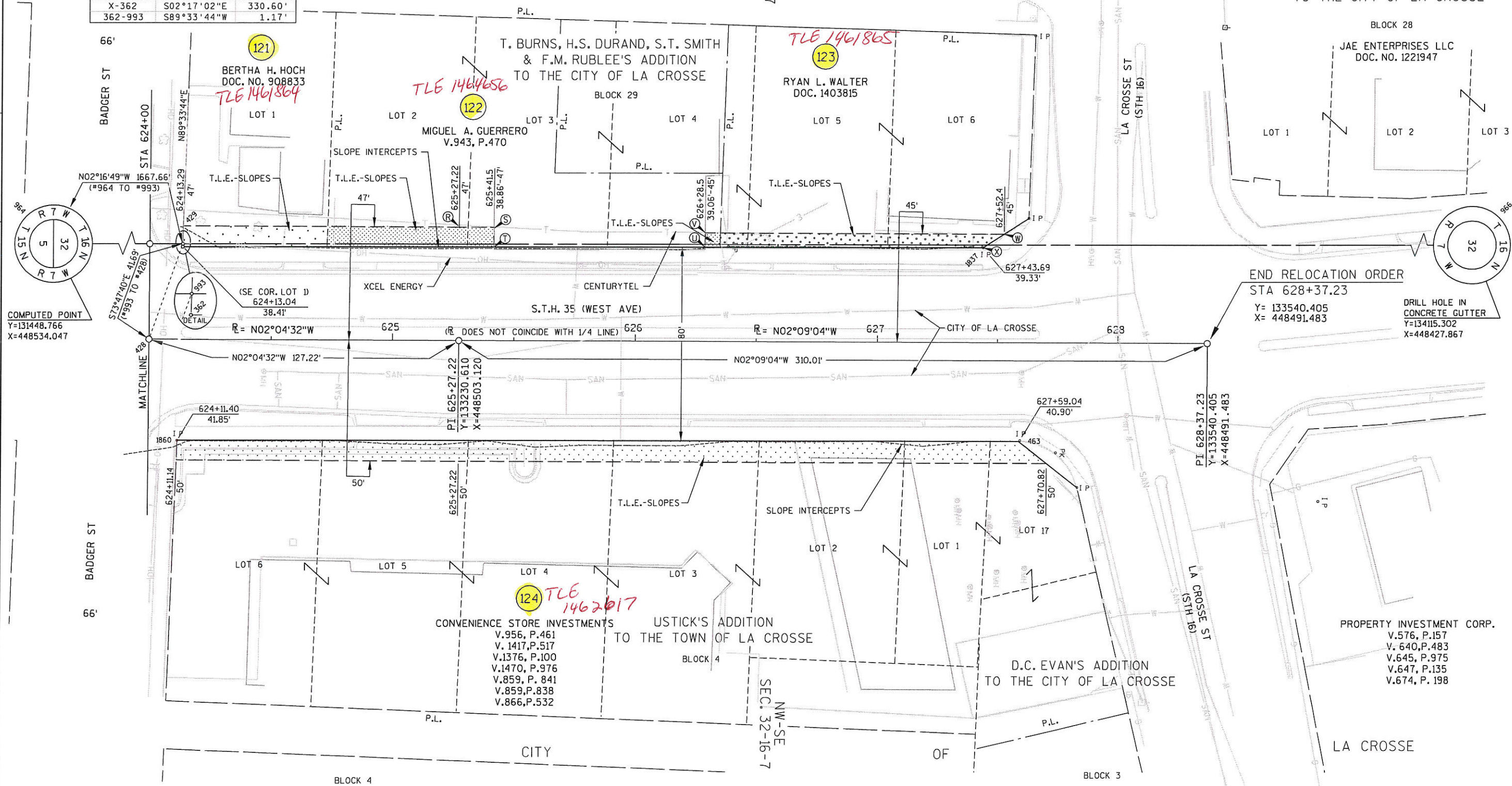
T. BURNS, H.S. DURAND, S.T. SMITH & F.M. RUBLEE'S ADDITION TO THE CITY OF LA CROSSE

BLOCK 28

JAE ENTERPRISES LLC
DOC. NO. 1221947

4

4



END RELOCATION ORDER
STA 628+37.23

Y= 133540.405
X= 448491.483

DRILL HOLE IN
CONCRETE GUTTER
Y=134115.302
X=448427.867

COMPUTED POINT
Y=131448.766
X=448534.047

(SE COR. LOT 1)
624+13.04
38.41'

PI 625+27.22
Y=133230.610
X=448503.120

PI 628+37.23
Y=133540.405
X=448491.483

CONVENIENCE STORE INVESTMENTS
V.956, P.461
V. 1417, P.517
V.1376, P.100
V.1470, P.976
V.859, P. 841
V.859, P.838
V.866, P.532

PROPERTY INVESTMENT CORP.
V.576, P.157
V. 640, P.483
V.645, P.975
V.647, P.135
V.674, P. 198

REVISION DATE 12-4-2006 9-11-2007 N.C.	DATE 3-20-2006	SCALE, FEET 0 20 40	HWY: S.T.H. 35	STATE R/W PROJECT NUMBER 5220-04-21	PLAT SHEET NO: 4.16
GRID FACTOR N/A			COUNTY: LA CROSSE	CONSTRUCTION PROJECT NUMBER 5220-04-71	PS&E SHEET