

TOWNSHIP 16 NORTH, RANGE 8 WEST OF THE FOURTH PRINCIPAL MERIDIAN, WISCONSIN
DEPENDENT RESURVEY AND SURVEY OF ISLAND IN SECTION 25

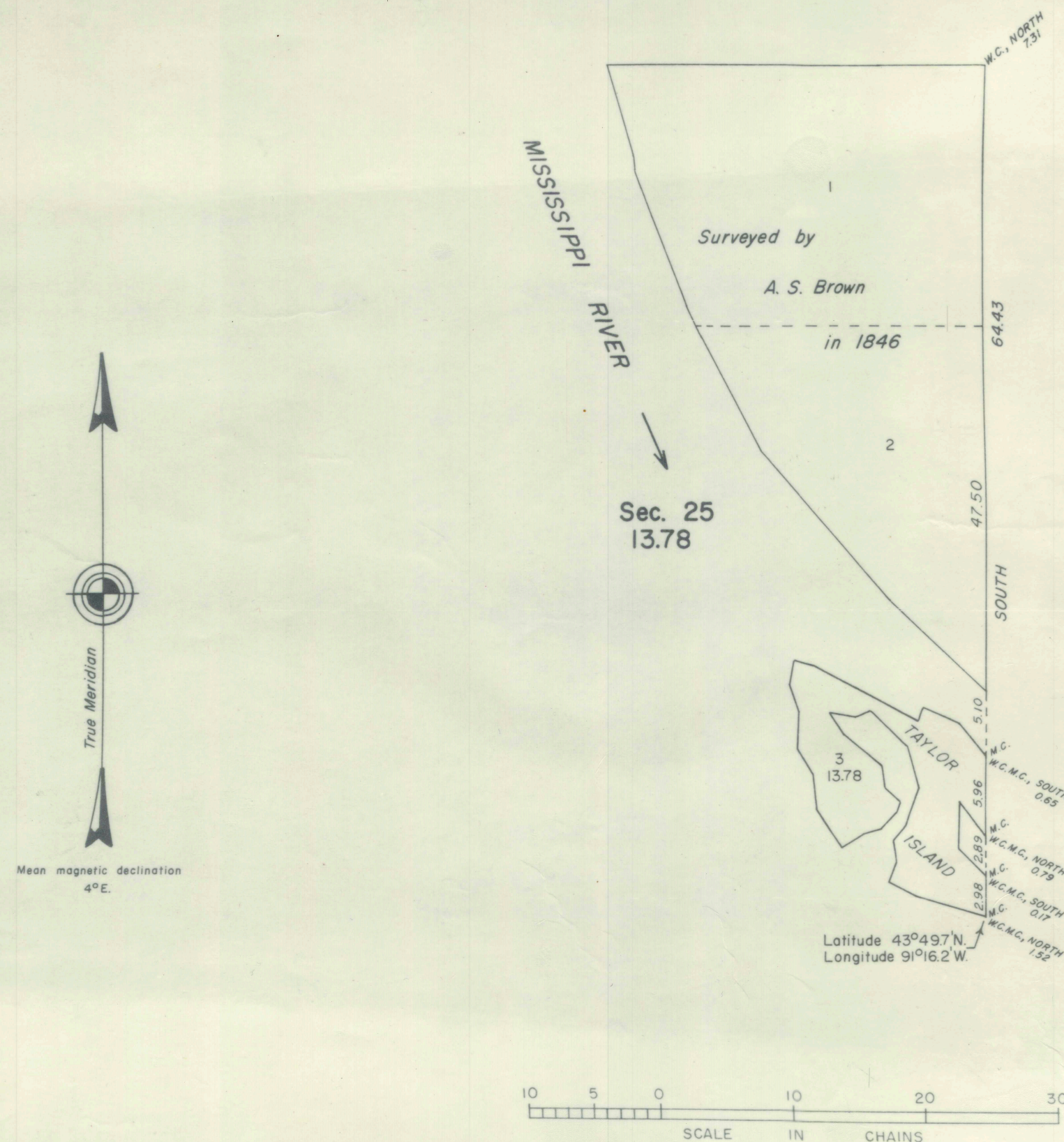
811973
811353

OFFICE OF REGISTER OF DEEDS
LACROSSE COUNTY, WIS.
RECEIVED AND FILED

AUG 13 1971
2:15 P.M.
EVERETTE B. RUNGE
REGISTER

This plat represents a retracement and reestablishment of a portion of the east boundary of the township, and, the survey of the portion of Taylor Island in the Mississippi River not previously surveyed or included within the area as shown upon the plat approved April 8, 1847.

The surveys were executed by Ray Harpin, Cadastral Surveyor, beginning May 2, 1968, and completed May 15, 1968, pursuant to Special Instructions dated August 25, 1966, for Group No. 83, Wisconsin.



Area Surveyed: 13.78 Acres

UNITED STATES DEPARTMENT OF THE INTERIOR
BUREAU OF LAND MANAGEMENT
Washington, D. C. October 17, 1969

This plat is strictly conformable to the approved field notes, and the survey, having been correctly executed in accordance with the requirements of law and the regulations of this Bureau, is hereby accepted.

For the Director

Clark I. Lamm

Chief, Division of Cadastral Survey