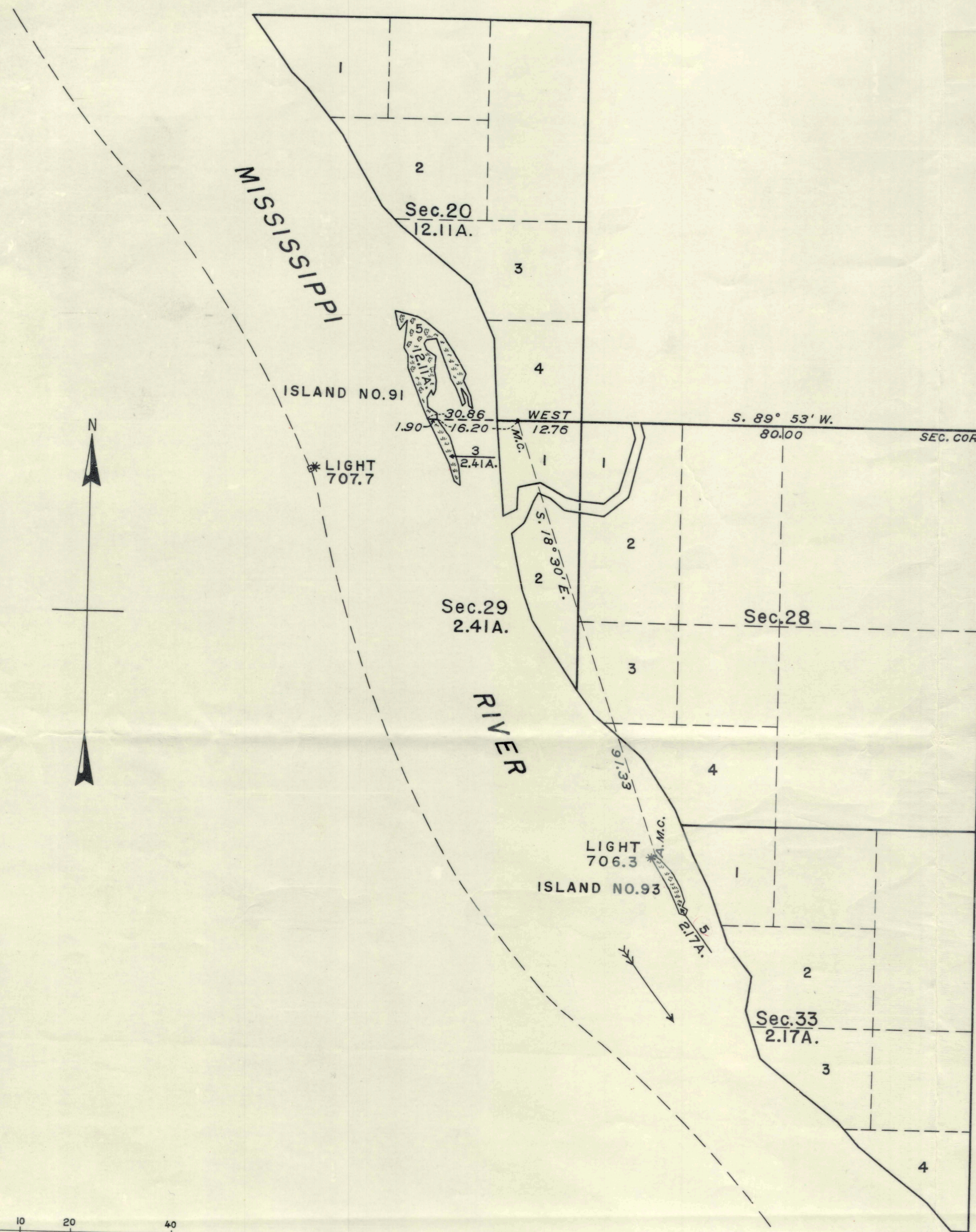


TOWNSHIP NO.17 NORTH, RANGE NO.8 WEST, OF THE FOURTH PRINCIPAL MERIDIAN, WISCONSIN.
 PLAT OF ISLANDS NOS.91 AND 93 IN THE MISSISSIPPI RIVER, SECTIONS 20,29, AND 33.

849394



SCALE: 1 INCH EQUALS 20 CHAINS.

AREA SURVEYED, 16.69 ACRES.

LINES DESIGNATED	BY WHOM SURVEYED	GROUP NO.	DATE OF SPECIAL INSTRUCTIONS	WHEN SURVEYED	
				BEGUN	COMPLETED
SUBDIVISIONAL MEANDER CONNECTION	HAL D. CRAIG HARLOW DAMMANN	52	JUNE 13, 1941.	AUGUST 11, 1941.	AUGUST 15, 1941.

MEMORANDUM.

THIS PLAT REPRESENTS THE SURVEY OF ISLANDS NOS. 91 AND 93 IN THE MISSISSIPPI RIVER, WHICH WERE NOT INCLUDED IN THE ORIGINAL SURVEY OF THE TOWNSHIP AS SHOWN UPON THE PLAT APPROVED APRIL 8, 1847.

THE SURVEY WAS EXECUTED PURSUANT TO AUTHORITY CONTAINED IN GENERAL LAND OFFICE LETTER 1714715 "E" DATED AUGUST 12, 1940, WHICH BEARS DEPARTMENTAL APPROVAL UNDER DATE OF AUGUST 17, 1940.

UNITED STATES DEPARTMENT OF THE INTERIOR
 GENERAL LAND OFFICE

DENVER, COLORADO, JUNE 4, 1942.

THIS PLAT OF ISLANDS NOS. 91 AND 93 IN THE MISSISSIPPI RIVER IN SECTIONS 20, 29, AND 33, TOWNSHIP NO. 17 NORTH, RANGE NO. 8 WEST, OF THE FOURTH PRINCIPAL MERIDIAN, WISCONSIN, IS STRICTLY CONFORMABLE TO THE FIELD NOTES OF THE SURVEY THEREOF, WHICH HAVE BEEN EXAMINED AND APPROVED.

Harlow Dammann
 SUPERVISOR OF SURVEYS.

WASHINGTON, D. C., DECEMBER 17, 1942.

THE SURVEY REPRESENTED BY THIS PLAT, HAVING BEEN CORRECTLY EXECUTED IN ACCORDANCE WITH THE REQUIREMENTS OF LAW AND THE REGULATIONS OF THIS OFFICE, IS HEREBY ACCEPTED.

Earl David Wolfson
 ASSISTANT COMMISSIONER.

4-496 1714715
 ORIGINAL
 DUPLICATE PLAT
 The following annotations are not a part of this plat
 Received with letter dated June 4, 1942
 From *Supervisor*
 J. *Supervisor*
 Posted in Div. "G" 11/20/45 225
 Plat officially filed October 17, 1942
 Miscellaneous 1714715