

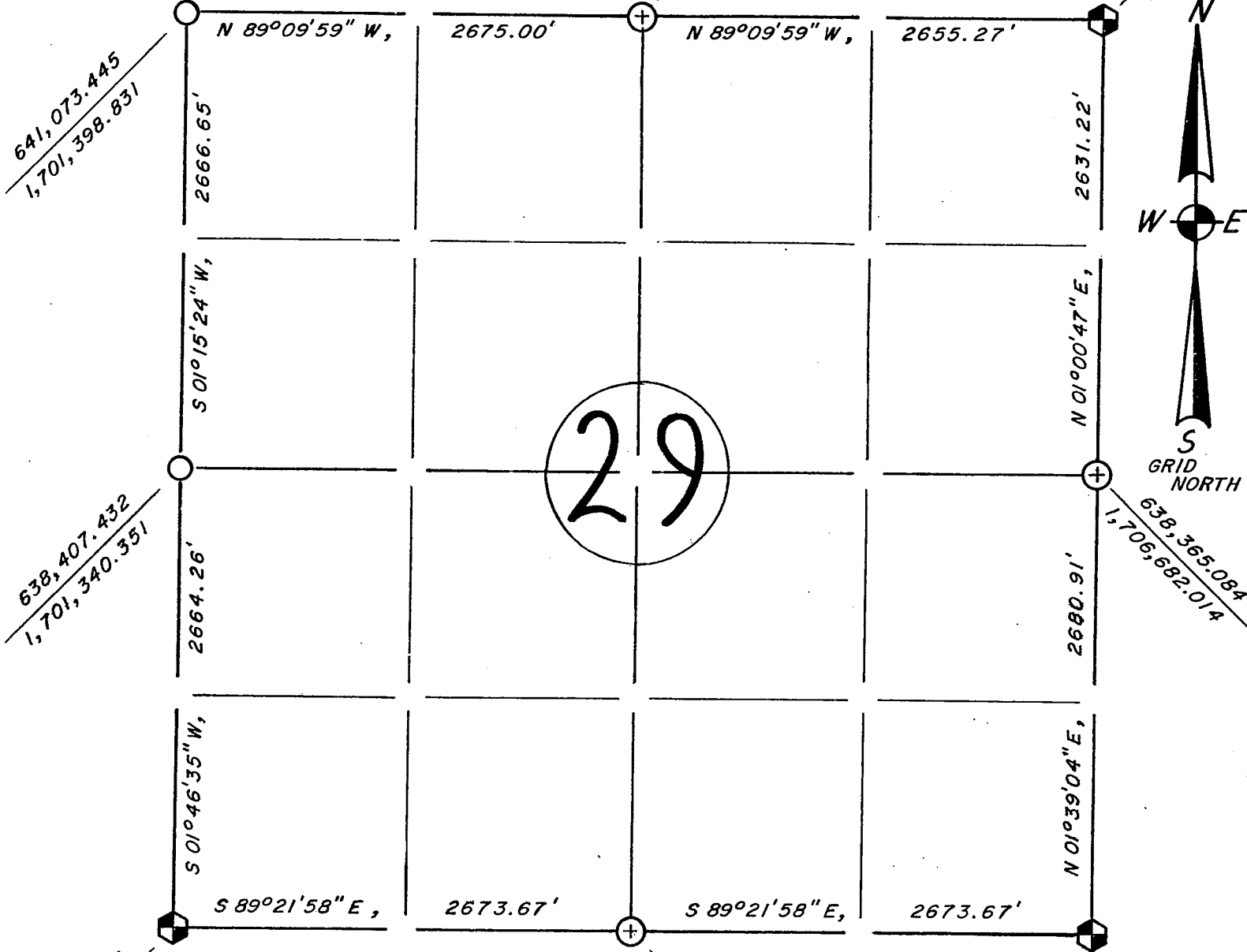
Section Summary and Index

(GRID BEARINGS AND DISTANCES)
(GRID FACTOR: 0.999898977)

29 - 15 - 5
Section Town Range

TOWN OF WASHINGTON

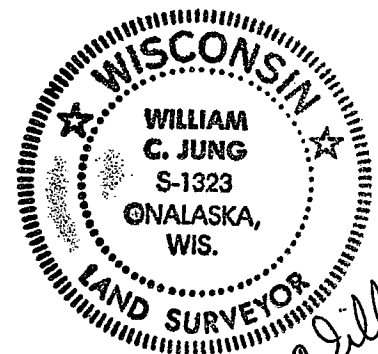
LaCrosse County, WI



LEGEND

- LUNDE monument.
- Stone or concrete monument.
- Other IRON PIPE
- IRON BAR WITH AN ALUMINUM CAP

(not to scale)



William C. Jung
7/9/01