

RECEIVED

JAN 11 2007

COUNTY SURVEYOR'S OFFICE

PLAT OF SURVEY

FOR KEVIN BIONDO

LOCATED IN THE NW 1/4 - NE 1/4, THE SW 1/4 - NE 1/4,
THE SE 1/4 - NE 1/4, AND PART OF THE NE 1/4 - NE 1/4,
SECTION 30, T.15 N., R. 5 W., TOWN OF WASHINGTON,
LA CROSSE COUNTY, WISCONSIN



0 200' 400' 800'
SCALE 1" = 400'

LEGEND:

- = 3/4" X 30" IRON BAR SET
- = IRON MONUMENT FOUND
SIZE NOTED

BEARINGS ARE REFERENCED TO THE
EAST LINE OF THE SE 1/4 19-15-5
TRUE - N 1°29'19" E
(LA CROSSE COUNTY COORDINATE SYSTEM - S 1°19'06")

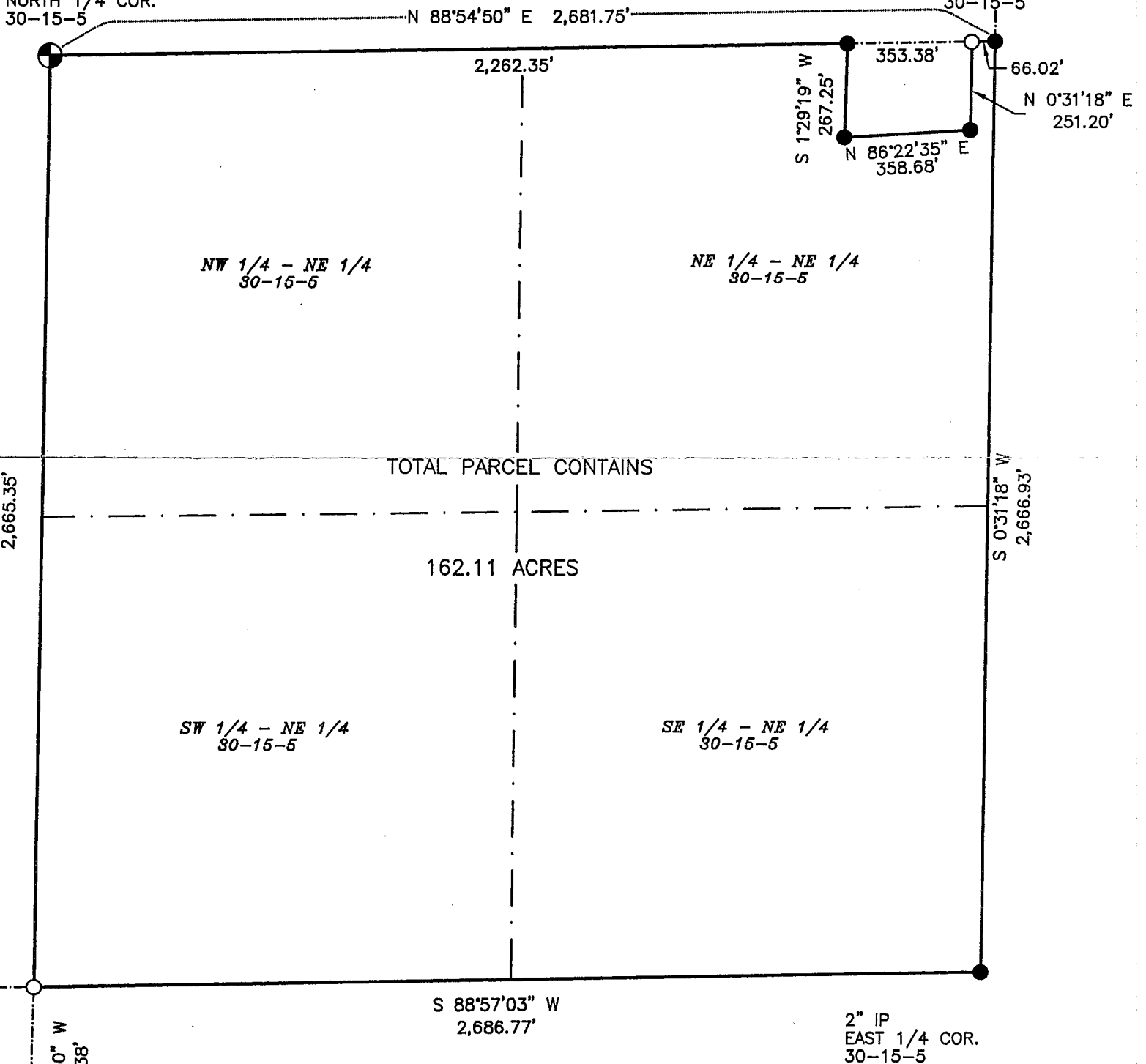
SURVEYORS NOTE:

I FOUND A LUNDE MONUMENT AT THE NORTH 1/4 CORNER THAT IS OUT OF PLUM AND TIPPING DOWNHILL. AFTER CHECKING THE BEARING TREE MEASUREMENTS, I FOUND THE MONUMENT TO NO LONGER BE IN THE COMPUTED POSITION. I USED THE COMPUTED POSITION FOR THIS SURVEY.

COUNTY MONUMENT
NORTH 1/4 COR.
30-15-5

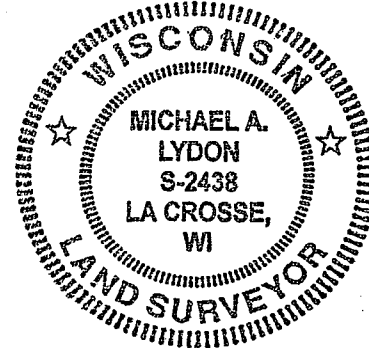
LUNDE MON.
E. 1/4 COR.
19-15-5

1" IP
NORTHEAST CORNER
30-15-5



TOTAL PARCEL CONTAINS

162.11 ACRES



SURVEYORS CERTIFICATE

I, MICHAEL A. LYDON, REGISTERED LAND SURVEYOR, DO HEREBY CERTIFY THAT ON JANUARY 6, 2007 I SURVEYED THE PROPERTY DESCRIBED ABOVE AND THAT THE ABOVE PLAT IS A CORRECT REPRESENTATION TO THE BEST OF MY KNOWLEDGE AND BELIEF.

Michael A. Lydon 1/7/06

R.L.S. # 2438

SURVEYED BY: MIKE LYDON
420 NORTH LOSEY BLVD.
LA CROSSE WI 54601
608-796-0333

W-287