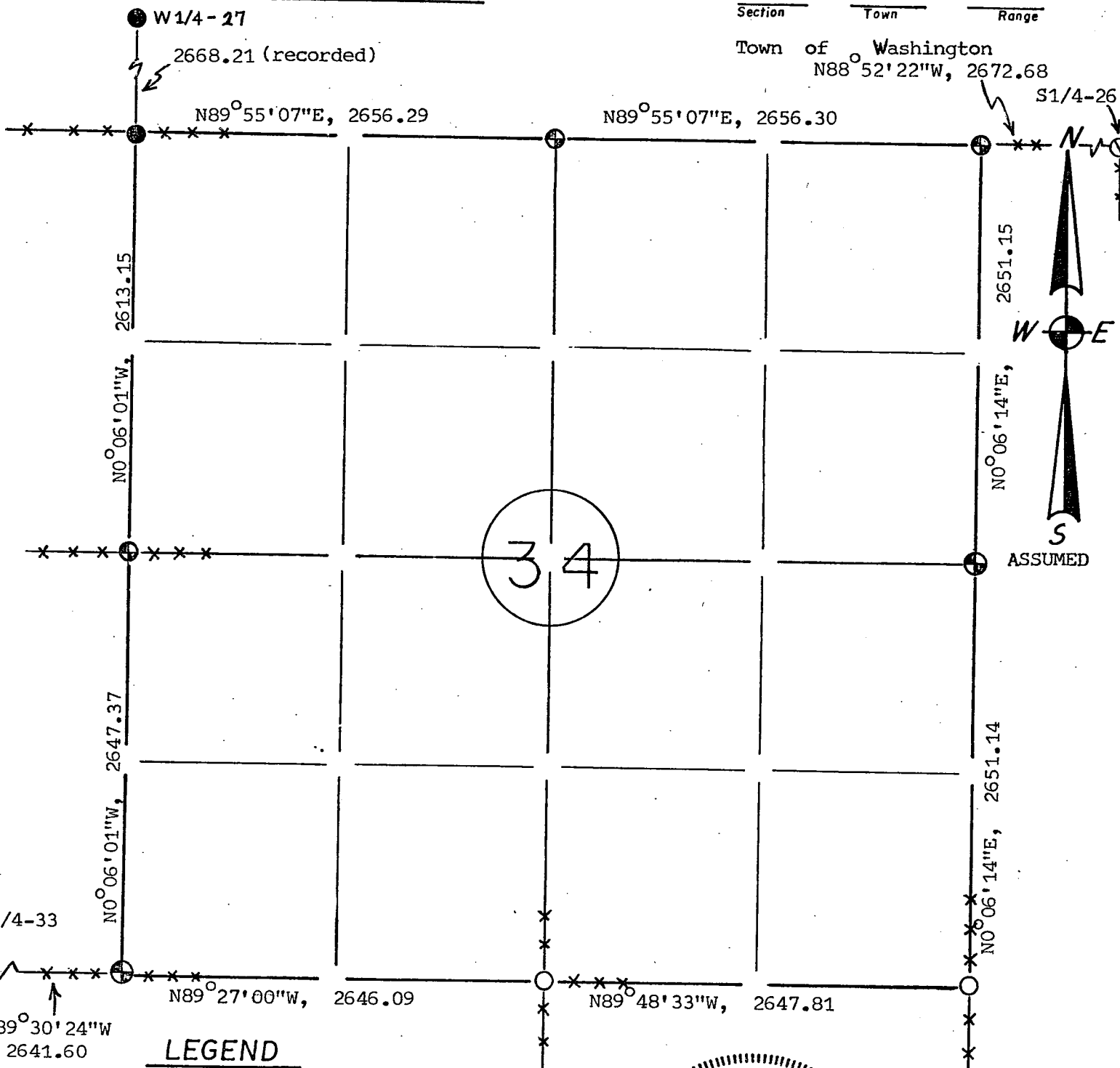


Section Summary and Index

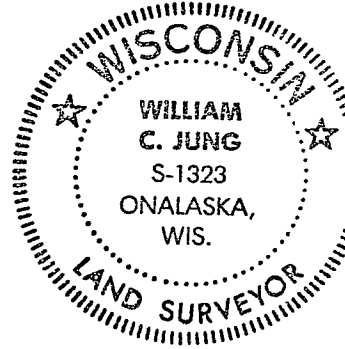
| | | |
|---------|------|-------|
| 34 | 15N | 5W |
| Section | Town | Range |

Town of Washington
N88°52'22"W, 2672.68



LEGEND

- ⊕ - Brass capped Lunde monument.
- - Stone or concrete monument.
- - Other set an iron pipe
- - Existing iron pipe
- ⊖ - Berntsen top in existing iron pipe



William C. Jung
2/19/88

Deputy County Surveyor for LaCrosse County
February 19, 1988

Revised: August 4, 1988