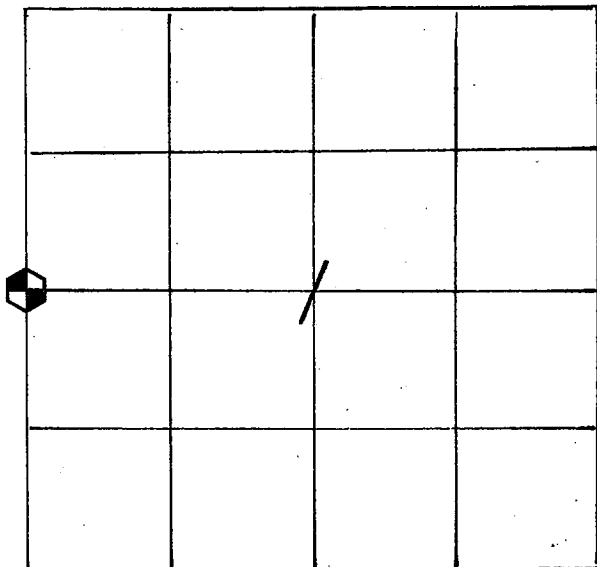


U. S. PUBLIC LAND SURVEY MONUMENT RECORD

SECTION 1 T 15 N, R 5 W, TOWN OF WASHINGTON
 LA CROSSE COUNTY



LOCATION OF LANDMARK

Crew;

WILLIAM C. JUNG
 PETER F. FOLLANSBEE

Date:

7/16/1997

Describe any record evidence, monument evidence, testimonial evidence or any other material evidence you considered and whether the monument was found or restored through acceptance of an obliterated evidence location.

I accepted the old East-West line as evidence ^{of} old lines surveyed and run, and therefore set the corner in the old fence and on line with the section corners. I set a Lunde at the corner.

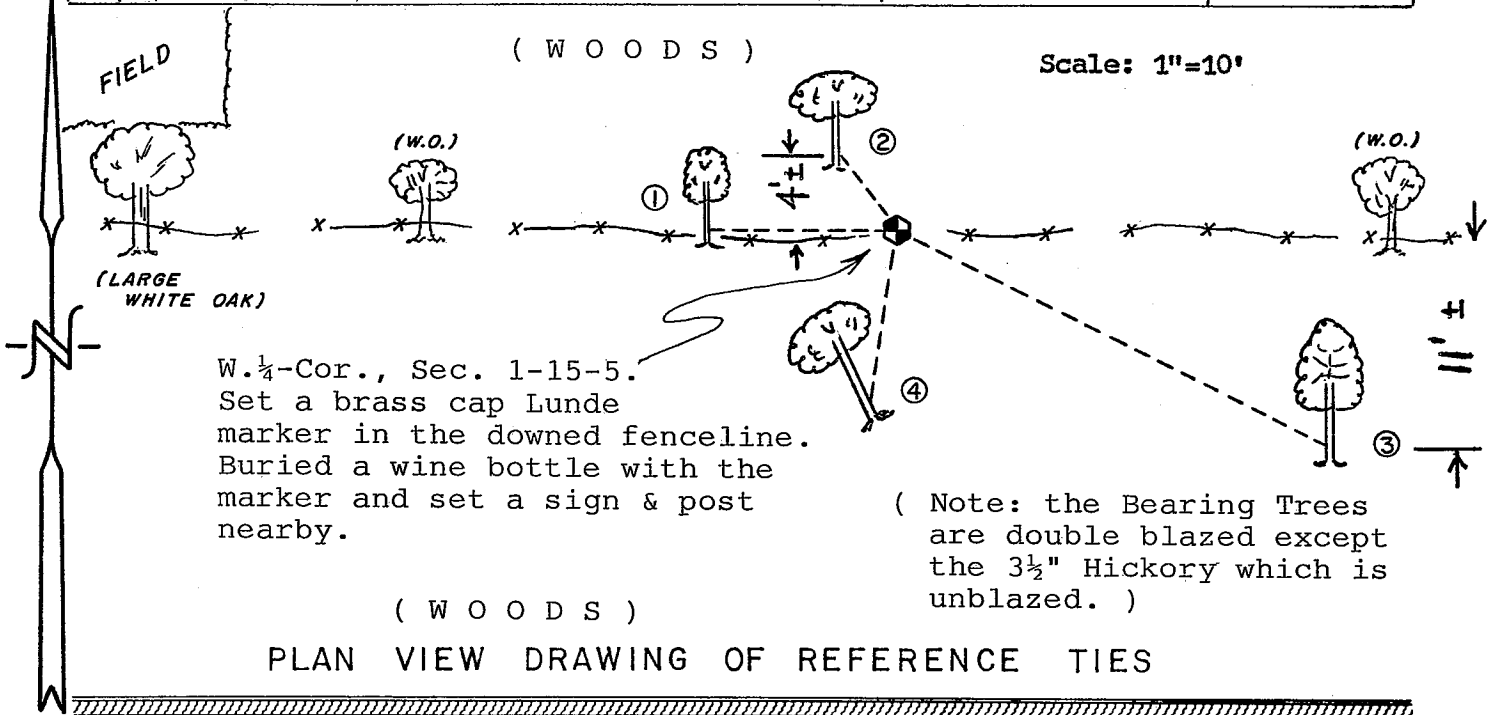
Describe or show any material discrepancy between the location of the restored corner and that of the corner previously restored or reestablished.

None Known.

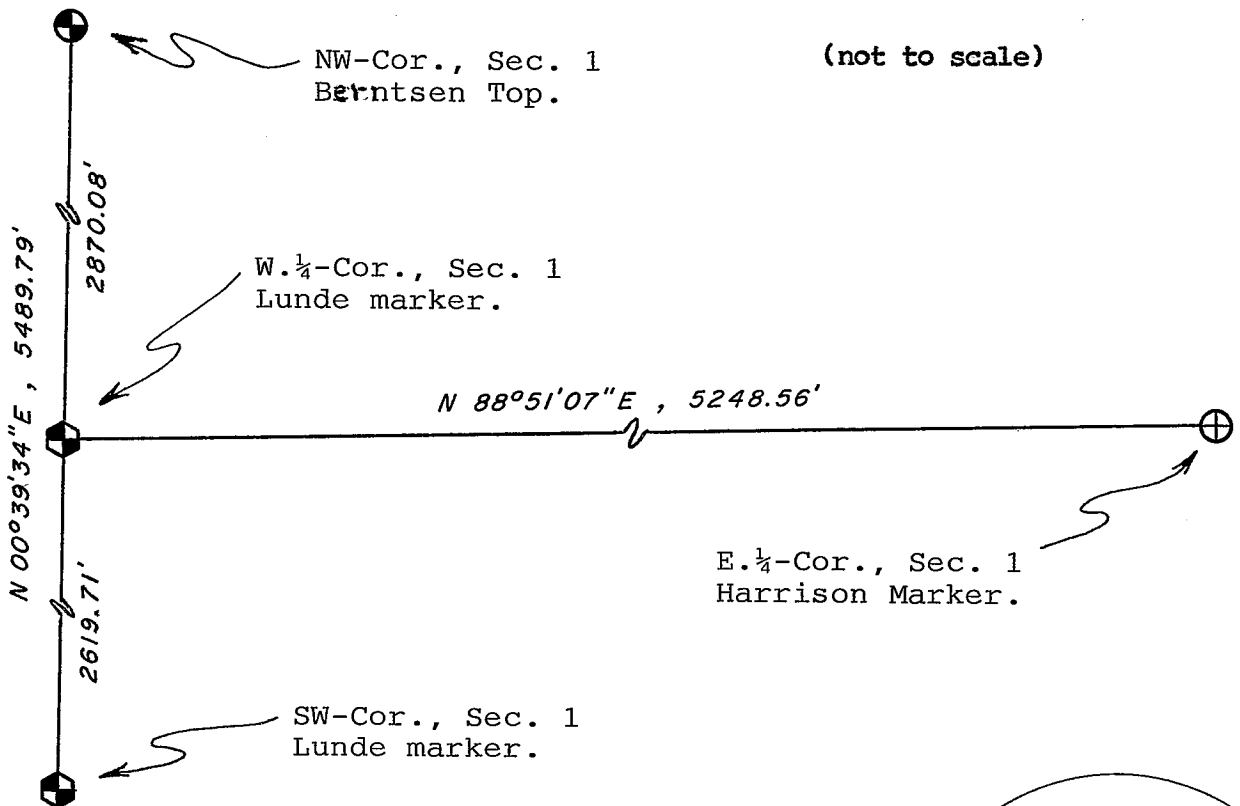
WISCONSIN COORDINATE SYSTEM
North
East
Theta Angle
Horiz. Order
Vert. Order
TYPE OF LANDMARK
Lunde marker.
BEARINGS ARE REFERENCED TO
GRID NORTH.

RECORD OF DURABLE WITNESS MONUMENTS

NO	DESCRIPTION	BEARING	DISTANCE
1	Set nail in N.-side 3½" Hickory	West ±	9.69 Ft.
2	Set nail in SW-side 6½" Oak	Northwesterly±	4.89 Ft.
3	Set nail in SW-side 9½" Hickory	Southeasterly±	24.87 Ft.
4	Set nail in NW-side 13½" White Oak	S 09°W(Mag.)	9.18 Ft.



MAP SHOWING DISTANCE AND DIRECTION TO OTHER PUBLIC LAND SURVEY CORNERS USED FOR REESTABLISHING THE CORNER



I, William C. Jung, County Surveyor
HEREBY CERTIFY THAT THE CORNER LOCATION SHOWN ON THIS RECORD
WAS DETERMINED BY ME OR UNDER MY DIRECTION AND CONTROL AND
THAT THIS U. S. PUBLIC LAND SURVEY MONUMENT RECORD IS CORRECT
AND COMPLETE TO THE BEST OF MY KNOWLEDGE AND BELIEF.

William C. Jung 7/25/97
Signature Date

