

US PUBLIC LAND SURVEY MONUMENT RECORD-ADDENDUM
TIE SHEET ADDENDUM-21505030020 (LA CROSSE COUNTY INDEX 32A)

2020-5

SECTION 3 T. 15 N., R. 5 W.
LA CROSSE COUNTY, WI.

TOWN OF WASHINGTON

WISCONSIN COORDINATE SYSTEM

DATUM: SPC- WI SOUTH NAD83(91)

NORTH: 656,657.562'

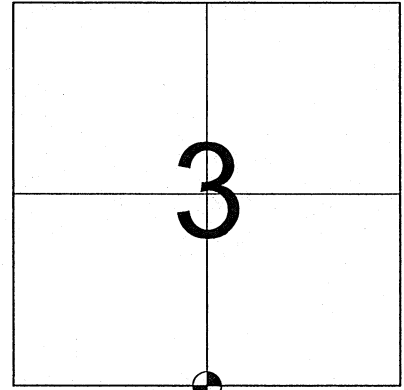
EAST: 1,714,841.508'

ELEVATION:

TYPE OF MONUMENT: LUNDE MARKER

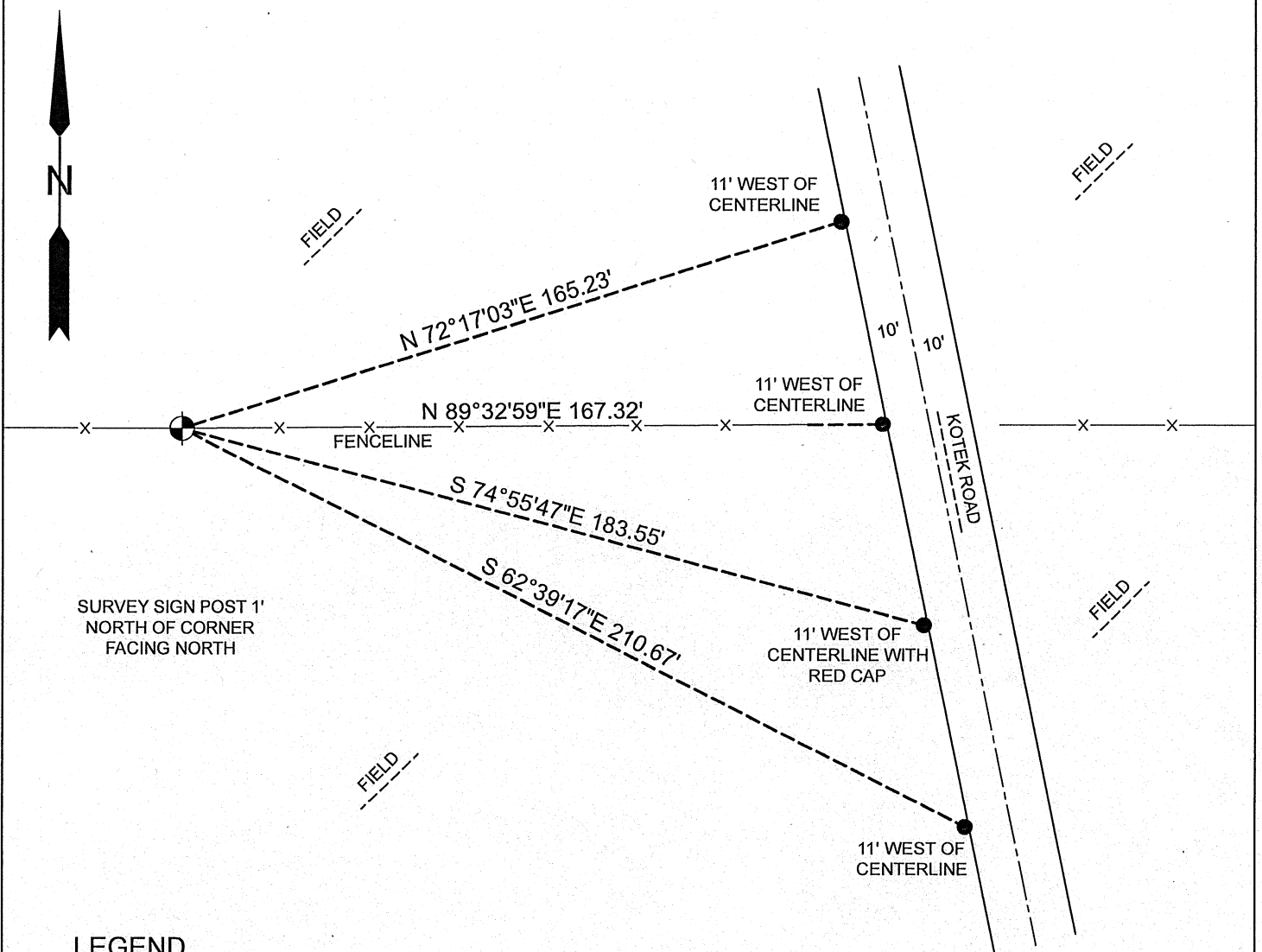
CREW: BRYAN MEYER, COREY HUGHES

DATE: MARCH 4, 2020



LOCATION OF LANDMARK

March 4th, 2020- Bryan Meyer and I performed maintenance on this corner and found the Lunde marker of record at the corner holding securely in an east-west fenceline. We also found all of W. Jung's ties as shown.



LEGEND

- LUNDE MARKER
- FOUND 3/4" IRON BAR



Corey Hughes
Corey M. Hughes

4-13-2020
Date

I, Corey M. Hughes, Hereby certify that the corner location shown on this record was determined by me or under my direction and control and that this U.S. Public Land Survey Monument Record Addendum is correct and complete to the best of my knowledge and belief.

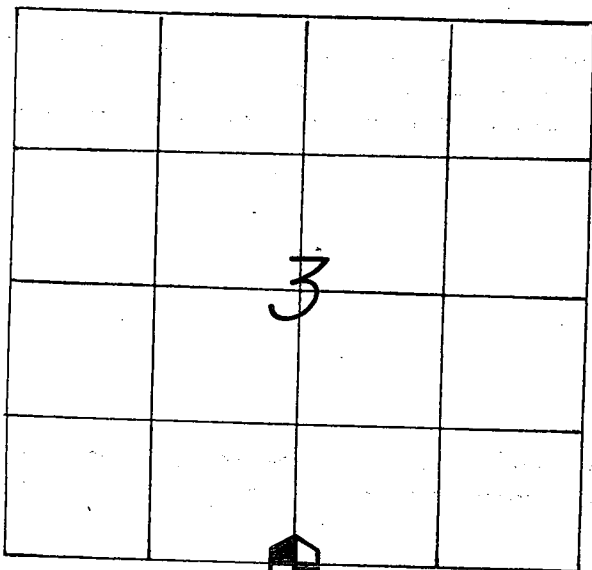
CORNER ID:
21505030020

21505030020

U. S. PUBLIC LAND SURVEY MONUMENT RECORD

SECTION 3 T 15 N, R 5 W, TOWN OF WASHINGTON

LA CROSSE COUNTY



LOCATION OF LANDMARK

CREW: **WILLIAM G. JUNG**
PETER F. FOLLANSBEE
 DATE: 10/07/2005

WISCONSIN COORDINATE SYSTEM

North 656,657.562

East 1,714,841.518

Theta Angle

Horiz. Order

Vert. Order

DATUM: 1983('91)

TYPE OF LANDMARK

BRASS CAP LUNDE MARKER.

BEARINGS ARE REFERENCED TO
 GRID NORTH AS PER SECTION DATA.

Describe any record evidence, monument evidence, testimonial evidence or any other material evidence you considered and whether the monument was found or restored through acceptance of an obliterated evidence location.

On his 1876 survey Middlebrook shows that there is a "kink" at this corner and that the corner is not equidistant between the section corners. I fit his 1876 mile distance within about 3 inches. Therefore I set the corner in the old East-West line fence and proportionately between the section corners. The proportion was set up with Middlebrook's distances. I set a Lunde at the corner. Old Mr. Kotek, a long time resident to the South, knew nothing about the corner location. Describe or show any material discrepancy between the location of the restored corner and that of the corner previously restored or reestablished.

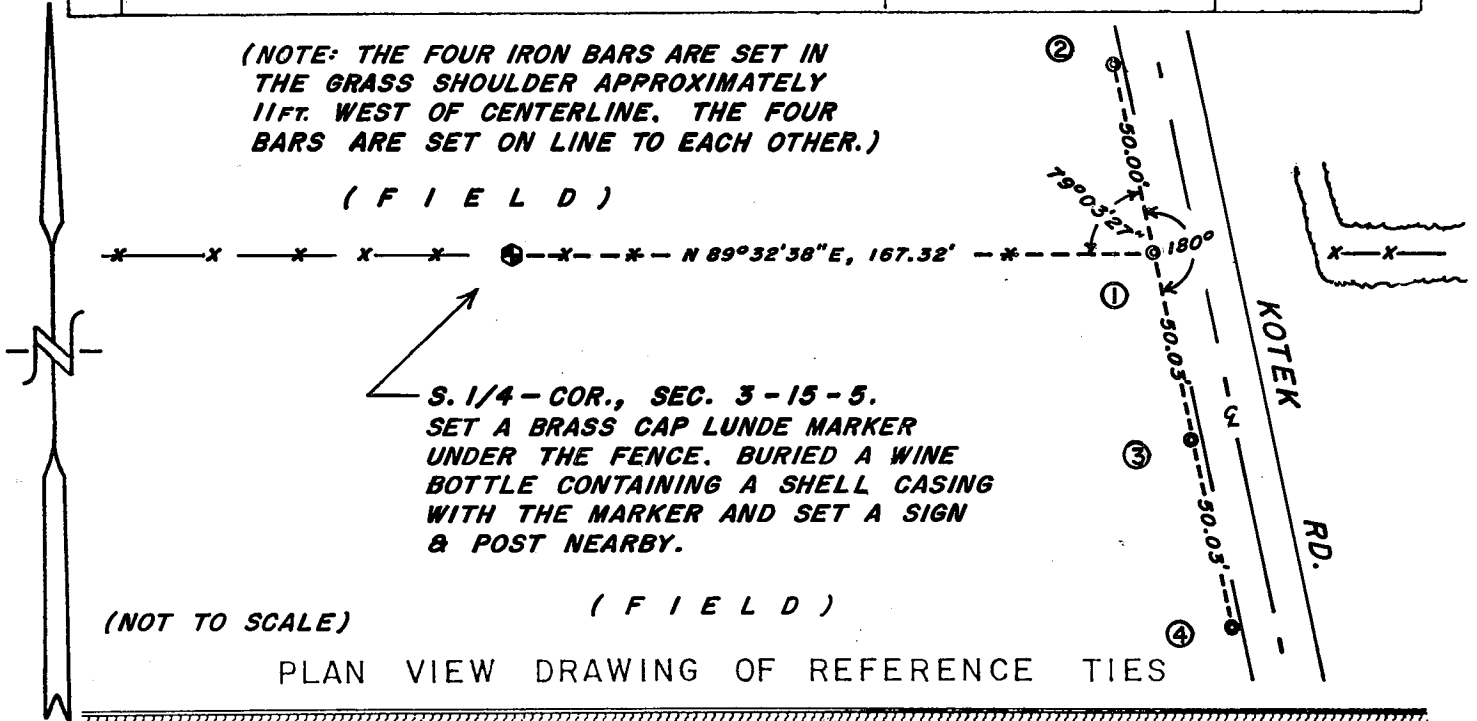
Chris Fechner has surveys in Sections 3 and 10 that indicate that he needed this corner location for his work. I don't know what he did. In his 1982 survey, Dick Berg did not really commit himself to the location of this corner.

RECORD OF DURABLE WITNESS MONUMENTS

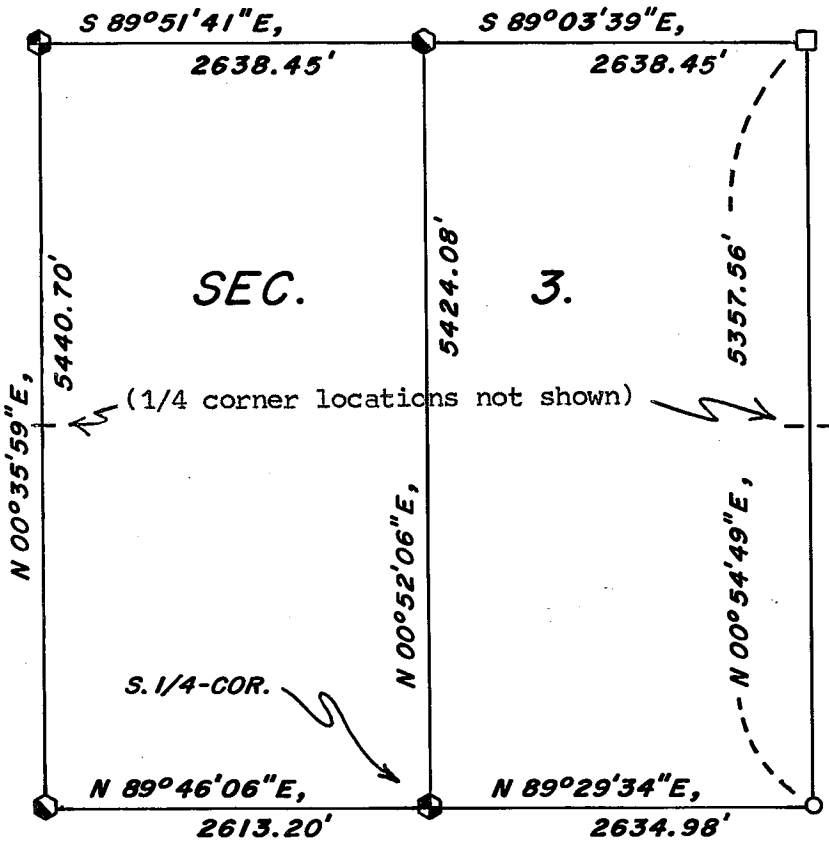
NO	DESCRIPTION	GRID BEARINGS	GROUND DIST.'s
		BEARING	DISTANCE
1	SET A 3/4"x30" IRON BAR WITH A RED PLASTIC CAP	N 89°32'38"E	167.32 FT.
2	SET A 3/4"x30" IRON BAR WITH A RED PLASTIC CAP	N 11°23'55"W FROM ①	50.00 FT.
3	SET A 3/4"x30" IRON BAR WITH A RED PLASTIC CAP	S 11°23'55"E FROM ①	50.03 FT.
4	SET A 3/4"x30" IRON BAR WITH A RED PLASTIC CAP	S 11°23'55"E FROM ①	100.06 FT.

(NOTE: THE FOUR IRON BARS ARE SET IN THE GRASS SHOULDER APPROXIMATELY 11 FT. WEST OF CENTERLINE. THE FOUR BARS ARE SET ON LINE TO EACH OTHER.)

(FIELD)



MAP SHOWING DISTANCE AND DIRECTION TO OTHER PUBLIC LAND SURVEY CORNERS USED FOR REESTABLISHING THE CORNER



I, WILLIAM C. JUNG, COUNTY SURVEYOR
HEREBY CERTIFY THAT THE CORNER LOCATION SHOWN ON THIS RECORD
WAS DETERMINED BY ME OR UNDER MY DIRECTION AND CONTROL AND
THAT THIS U. S. PUBLIC LAND SURVEY MONUMENT RECORD IS CORRECT
AND COMPLETE TO THE BEST OF MY KNOWLEDGE AND BELIEF.

William C. Jung
Signature

11/17/05
Date



Seal