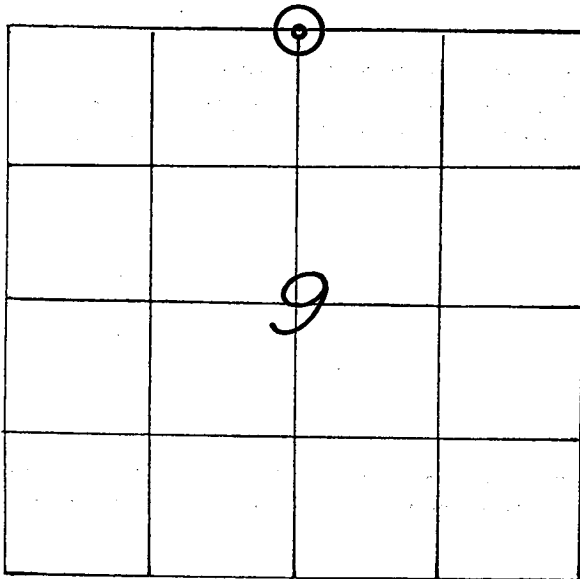


## U. S. PUBLIC LAND SURVEY MONUMENT RECORD

SECTION 9 T 15 N, R 5 W, TOWN OF WASHINGTON

LA CROSSE COUNTY



LOCATION OF LANDMARK

CREW: **WILLIAM C. JUNG**  
**PETER F. FOLLANSBEE**  
 DATE: **9/30/2005**

WISCONSIN COORDINATE SYSTEM	
North	656,743.894
East	1,709,603.242
Theta Angle	
Horiz. Order	
Vert. Order	
DATUM:	1983 ('91)
TYPE OF LANDMARK	
3/4" IRON BAR IN A ROCKPILE.	
BEARINGS ARE REFERENCED TO	

Describe any record evidence, monument evidence, testimonial evidence or any other material evidence you considered and whether the monument was found or restored through acceptance of an obliterated evidence location.

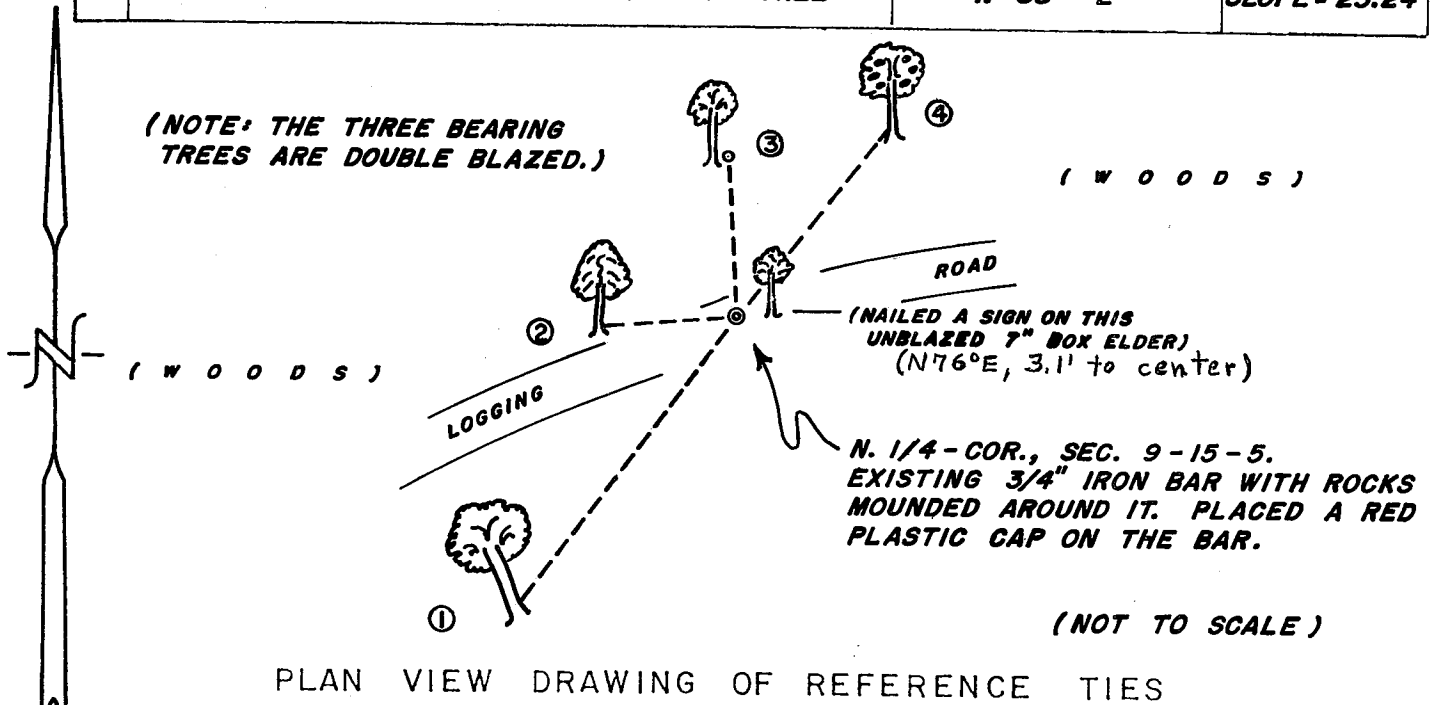
LaCrosse Engineering and Surveying had a computed location for this corner as shown on a 1988 section data sheet. Chris Fechner computed out a location for this corner that appears to fit pretty good the 1988 location. He discussed this corner with me at length. I agreed with how he was going to set the corner. I found and tied off Fechner's iron bar.

Describe or show any material discrepancy between the location of the restored corner and that of the corner previously restored or reestablished.

**NONE KNOWN.**

RECORD OF DURABLE WITNESS MONUMENTS

NO	DESCRIPTION	MAGNETIC	
		BEARING	DISTANCE
1	SET A NAIL IN E.-SIDE OF A 20" OAK	S 37° W	36.98 FT.
2	SET A NAIL IN N.-SIDE OF AN 8" HICKORY	S 86° W	13.58 FT.
3	EX. 3/4" IRON BAR NEAR THE E.-SIDE OF A TREE	N 03° W	16.95 FT.
4	SET A NAIL IN W.-SIDE OF A 10-1/2" NUT TREE	N 38° E	SLOPE = 25.24'



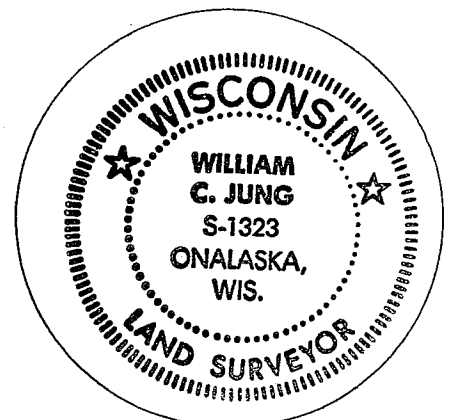
MAP SHOWING DISTANCE AND DIRECTION TO OTHER PUBLIC LAND SURVEY CORNERS USED FOR REESTABLISHING THE CORNER

I made no section measurements at this time. The location of this corner was confirmed by previous section measurements of record.

I, WILLIAM C. JUNG, COUNTY SURVEYOR  
 HEREBY CERTIFY THAT THE CORNER LOCATION SHOWN ON THIS RECORD WAS DETERMINED BY ME OR UNDER MY DIRECTION AND CONTROL AND THAT THIS U. S. PUBLIC LAND SURVEY MONUMENT RECORD IS CORRECT AND COMPLETE TO THE BEST OF MY KNOWLEDGE AND BELIEF.

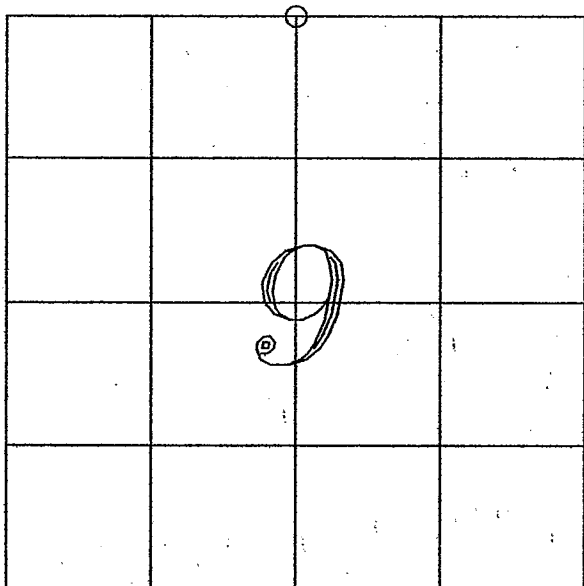
William C. Jung  
 Signature

11/16/05  
 Date



Seal

## U. S. PUBLIC LAND SURVEY MONUMENT RECORD

SECTION 9 T 15 N, R 5 W, TOWN OF WASHINGTON  
LA CROSSE COUNTY

LOCATION OF LANDMARK

CREW: CHRIS FECHNER  
RANDY CORLIS TRAVIS SEVERSON

DATE: 09/28/05

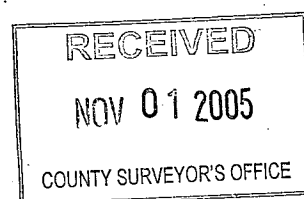
Describe any record evidence, monument evidence, testimonial evidence, or any other material evidence you considered and whether the monument was found or restored through acceptance of an obliterated evidence location.

*LaCrosse Engineering performed a survey for Ron Hammes in 1988 and then returned to place points along the lines of the South 1/2 of the NE 1/4 in 1991. I recovered several of these irons. LESCO used an Oak Tree for the South 1/4 corner of Section 9. When I traversed there I found a 1" iron pipe near the base of the tree. I drew a straight line between the NE and NW corners and then went from the South 1/4 to the mid point of the North line of the Section. The difference between the LESCO survey irons and my line are most likely the result of the 1" iron pipe placement.*

Describe or show any material discrepancy between the location of the restored corner and that of the corner previously restored or reestablished.

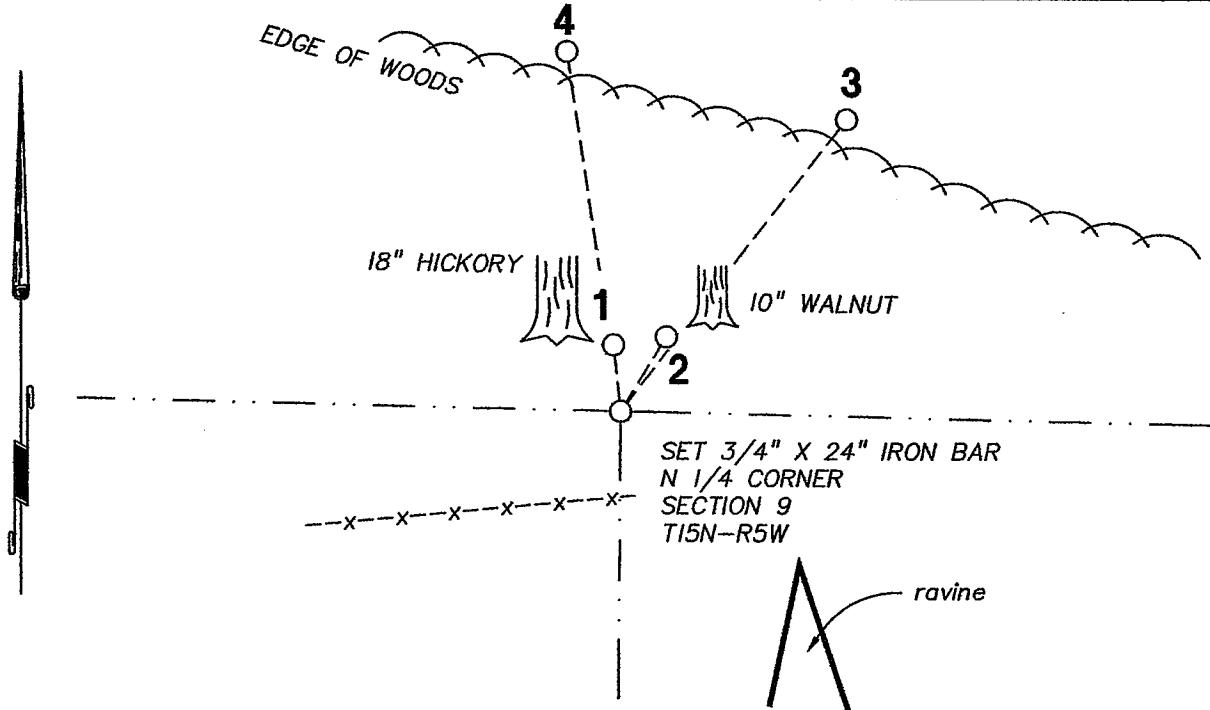
*I found no evidence of the calculated corner from the LESCO survey map. I set a 3/4" iron bar at the corner; ties noted.*

WISCONSIN COORDINATE SYSTEM
North
East
Theta Angle
Horiz. Order
Vert. Order
TYPE OF LANDMARK
3/4" X 24" IRON BAR
BEARINGS ARE REFERENCED TO
LA CROSSE COUNTY
COORDINATE SYSTEM



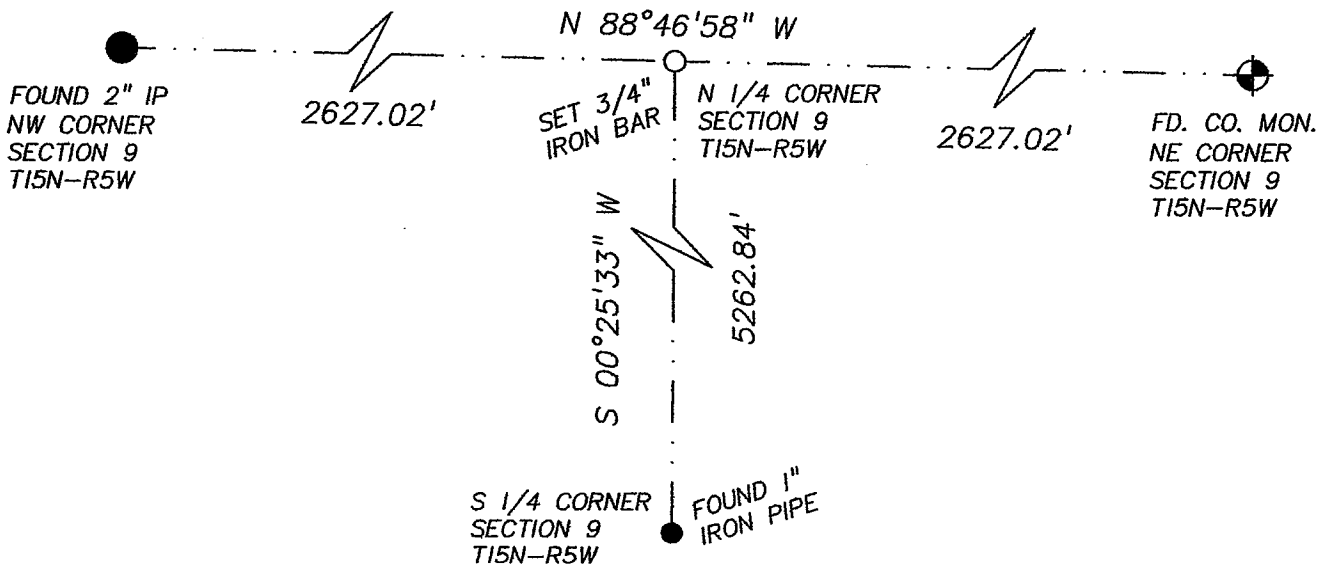
# RECORD OF DURABLE WITNESS MONUMENTS

NO	DESCRIPTION	BEARING	DISTANCE
1	SET 3/4" X 24" IRON BAR AT BASE OF 18" HICKORY TREE	N 06°07'00" W	16.68'
2	SET 3/4" X 24" IRON BAR AT BASE OF 10" WALNUT TREE	N 31°34'31" E	21.87'
3	SET 3/4" X 24" IRON BAR	N 37°37'52" E	92.43'
4	SET 3/4" X 24" IRON BAR	N 08°27'55" W	91.21'



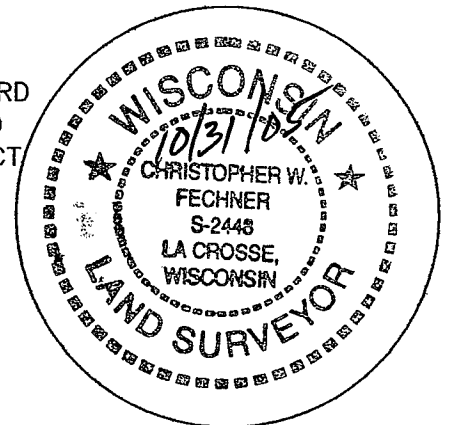
PLAN VIEW DRAWING OF REFERENCE TIES

## MAP SHOWING DISTANCE AND DIRECTION TO OTHER PUBLIC LAND SURVEY CORNERS USED FOR REESTABLISHING THE CORNER



I, Christopher W. Fechner, RLS 2448

HEREBY CERTIFY THAT THE CORNER LOCATION SHOWN ON THIS RECORD WAS DETERMINED BY ME OR UNDER MY DIRECTION AND CONTROL AND THAT THIS U. S. PUBLIC LAND SURVEY MONUMENT RECORD IS CORRECT AND COMPLETE TO THE BEST OF MY KNOWLEDGE AND BELIEF.



*Christopher W. Fechner*

10/31/05

Signature

Date

Seal