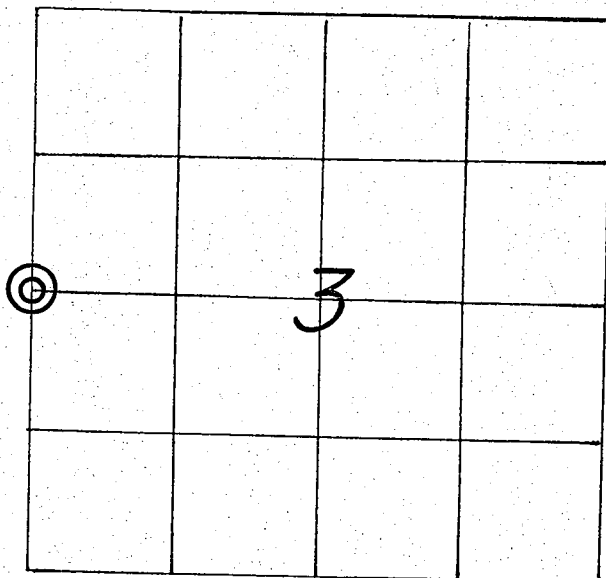


21505042000

U. S. PUBLIC LAND SURVEY MONUMENT RECORD

SECTION 3 T 15 N, R 5 W, TOWN OF WASHINGTON
 LA CROSSE COUNTY



WISCONSIN COORDINATE SYSTEM
North
East
Theta Angle
Horiz. Order
Vert. Order

TYPE OF LANDMARK
1-1/4" (I.D.) IRON PIPE WITH PLASTIC PLUG.
 BEARINGS ARE REFERENCED TO
ASSUMED NORTH AS PER SECTION DATA.

LOCATION OF LANDMARK

CREW: **WILLIAM C. JUNG**
PETER F. FOLLANSBEE
 DATE: **2/12/2004**

Describe any record evidence, monument evidence, testimonial evidence or any other material evidence you considered and whether the monument was found or restored through acceptance of an obliterated evidence location.

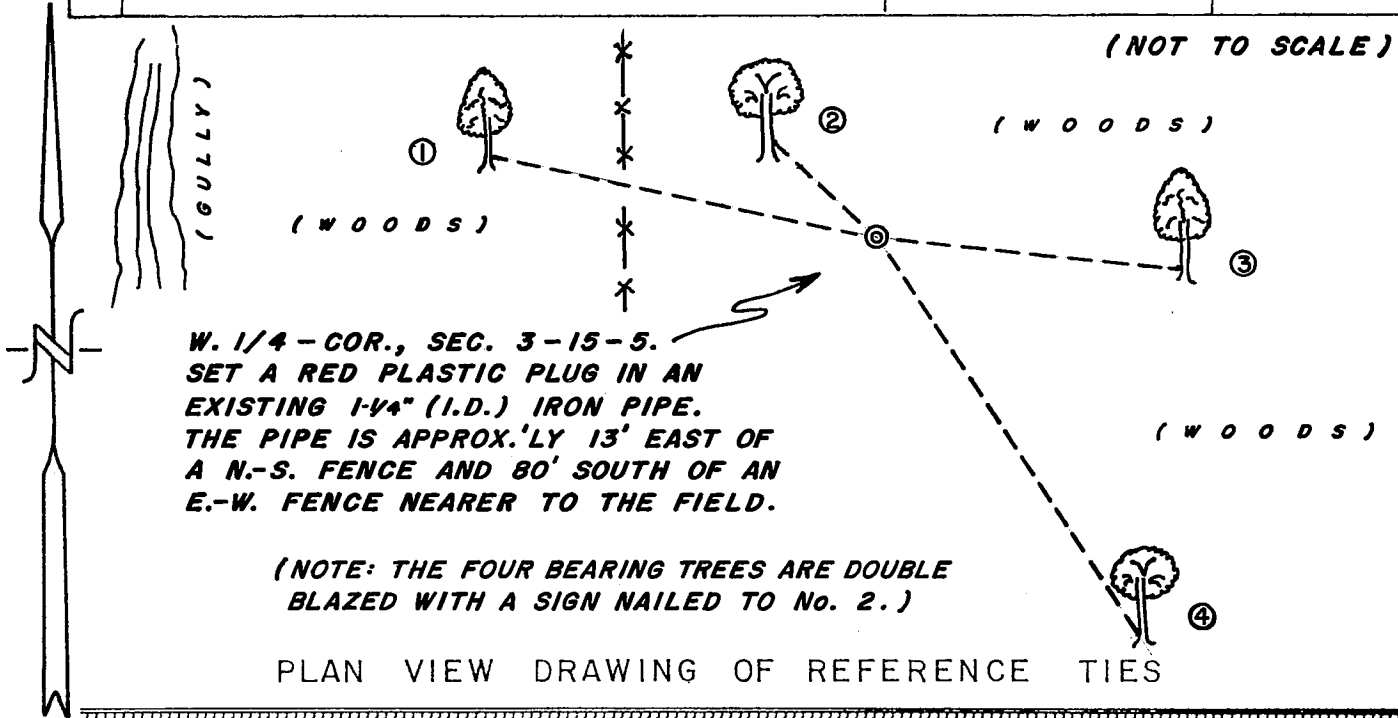
Dick Berg calculated a position for this corner and set an iron pipe at the corner location in 1982. It was then used in subsequent surveys. After reviewing Berg's section data, I agree with his location. I found his pipe and tied it off. I accepted it as the best available evidence of the original government corner location. He did not agree with the fence to the West, and nor do I. There is an old East-West fence about 80 feet to the North. These appear to be "rogue" fences. Describe or show any material discrepancy between the location of the restored corner and that of the corner previously restored or reestablished.

NONE KNOWN.

RECORD OF DURABLE WITNESS MONUMENTS

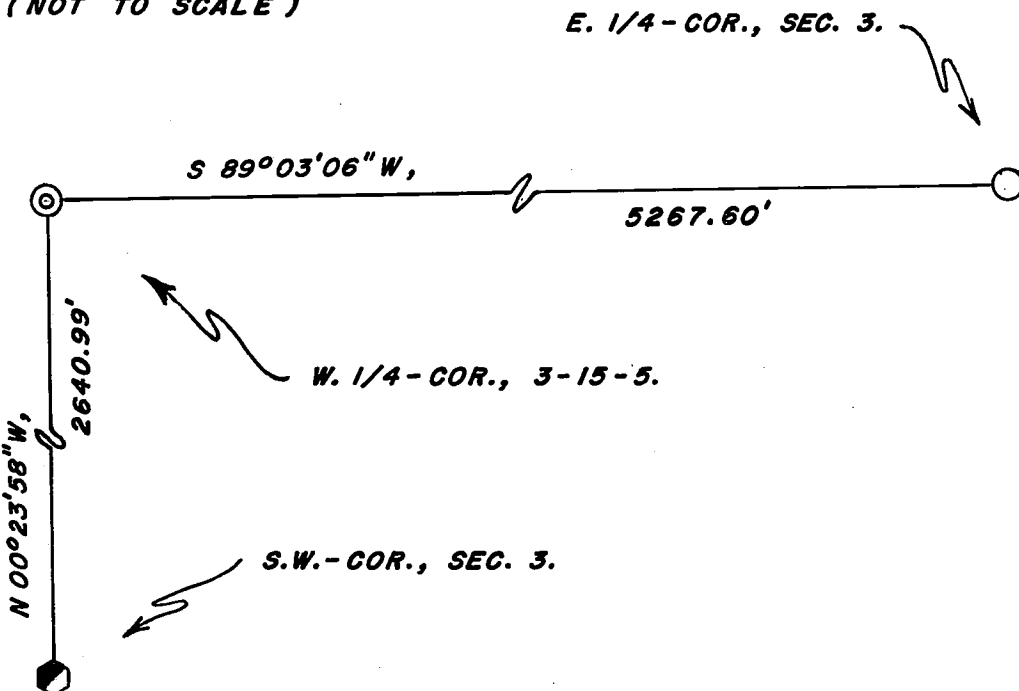
MAGNETIC

NO	DESCRIPTION	BEARING	DISTANCE
1	SET A P.K. NAIL IN N.-SIDE OF AN 8-1/2" HICKORY	N 78° W	20.14 FT.
2	SET A NAIL IN N.E.-SIDE OF AN 11" WHITE OAK	N 47° W	7.15 FT.
3	SET A NAIL IN N.-SIDE OF A 10" HICKORY	S 84° E	15.95 FT.
4	SET A NAIL IN N.E.-SIDE OF A 9" WHITE OAK	S 33° E	24.62 FT.



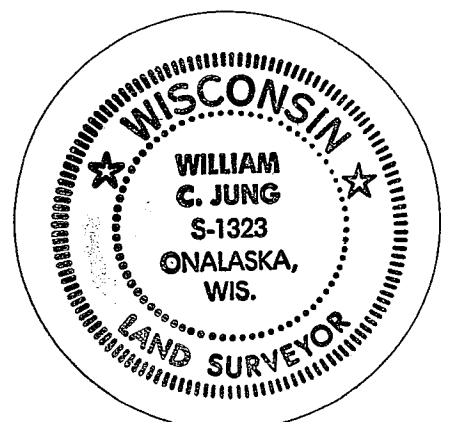
MAP SHOWING DISTANCE AND DIRECTION TO OTHER PUBLIC LAND SURVEY CORNERS USED FOR REESTABLISHING THE CORNER

(R. A. BERG MEASUREMENTS)
 (ASSUMED BEARINGS)
 (NOT TO SCALE)



I, WILLIAM C. JUNG, COUNTY SURVEYOR
 HEREBY CERTIFY THAT THE CORNER LOCATION SHOWN ON THIS RECORD WAS DETERMINED BY ME OR UNDER MY DIRECTION AND CONTROL AND THAT THIS U. S. PUBLIC LAND SURVEY MONUMENT RECORD IS CORRECT AND COMPLETE TO THE BEST OF MY KNOWLEDGE AND BELIEF.

William C. Jung 2/20/04
 Signature Date



Seal