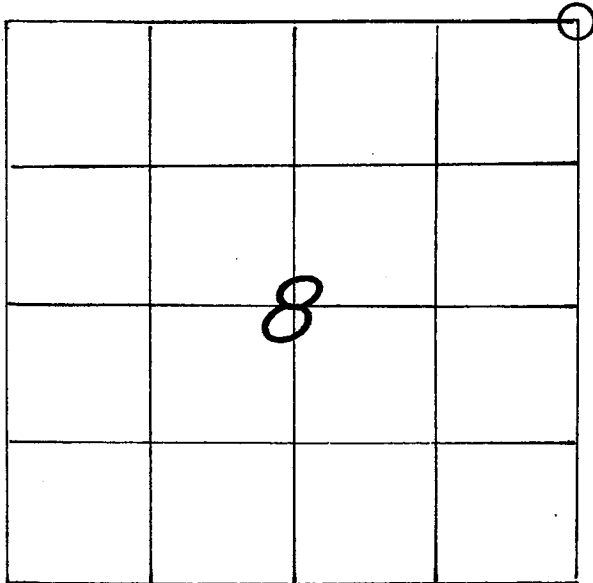


U. S. PUBLIC LAND SURVEY MONUMENT RECORD

SECTION 8 T 15 N, R 5 W, TOWN OF WASHINGTON

LA CROSSE COUNTY



LOCATION OF LANDMARK

Crew: WILLIAM C. JUNG
 PETER F. FOLLANSBEE
 Date: 4/04/1996

Describe any record evidence, monument evidence, testimonial evidence or any other material evidence you considered and whether the monument was found or restored through acceptance of an obliterated evidence location.

I found an existing pipe at the corner which I accepted as the best available evidence of the original government corner position. This pipe had been used as the corner in previous survey work.

Describe or show any material discrepancy between the location of the restored corner and that of the corner previously restored or reestablished.

NONE KNOWN.

WISCONSIN COORDINATE SYSTEM

North

East

Theta Angle

Horiz. Order

Vert. Order

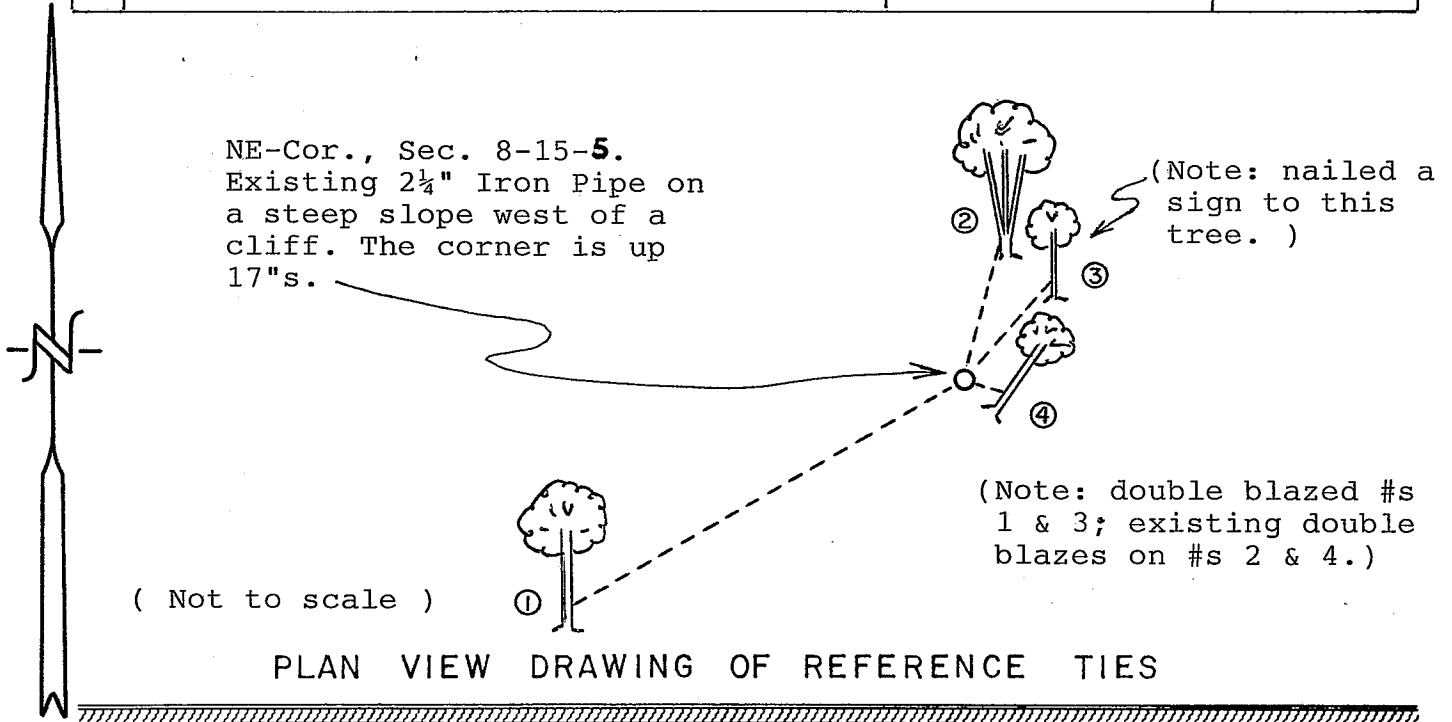
TYPE OF LANDMARK

Existing 2½" Iron Pipe.

BEARINGS ARE REFERENCED TO

RECORD OF DURABLE WITNESS MONUMENTS
MAGNETIC

NO	DESCRIPTION	BEARING	DISTANCE
1	Set P.K. Nail in SE-side 17" Oak	S 60°W	Sl.=46.90'
2	Ex. Nail in E.-side triple trunk tree	N 15°E	14.90 Ft.
3	Set P.K. Nail in SE-side 6" Basswood	N 41°E	13.85 Ft.
4	Ex. Nail in NE-side 8½" Birch	S 73°E	4.60 Ft.

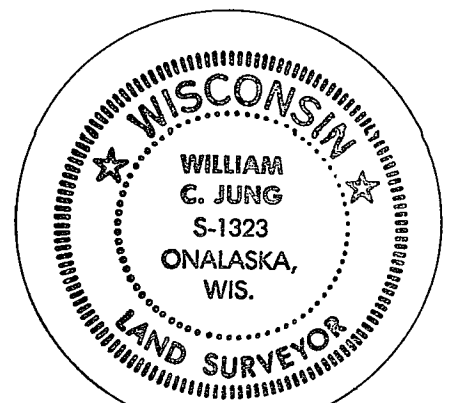


MAP SHOWING DISTANCE AND DIRECTION TO OTHER PUBLIC LAND
SURVEY CORNERS USED FOR REESTABLISHING THE CORNER

No section measurements were made by me at this time. This position had been confirmed in previous survey work.

I, William C. Jung, County Surveyor
HEREBY CERTIFY THAT THE CORNER LOCATION SHOWN ON THIS RECORD
WAS DETERMINED BY ME OR UNDER MY DIRECTION AND CONTROL AND
THAT THIS U. S. PUBLIC LAND SURVEY MONUMENT RECORD IS CORRECT
AND COMPLETE TO THE BEST OF MY KNOWLEDGE AND BELIEF

William C. Jung 5/14/96
Signature Date



Seal