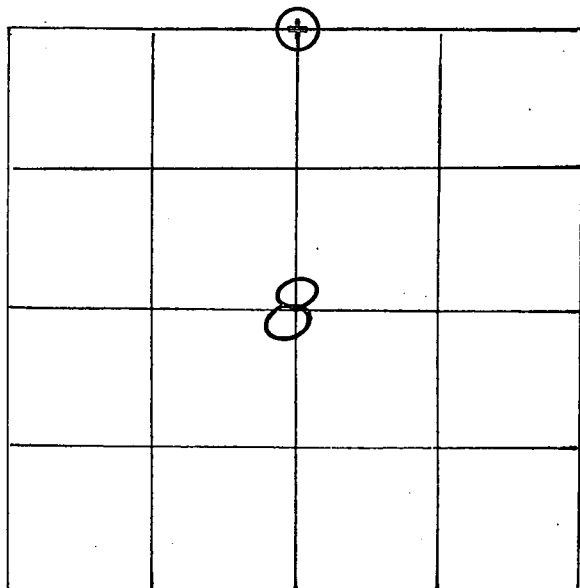


U. S. PUBLIC LAND SURVEY MONUMENT RECORD

SECTION 8 T 15 N, R 5 W, TOWN OF WASHINGTON

LA CROSSE COUNTY



LOCATION OF LANDMARK

CREW: WILLIAM C. JUNG
 PETER F. FOLLANSBEE
 DATE: 8/14/2000.

WISCONSIN COORDINATE SYSTEM

North 656,882.029

East 1,704,342.788

Theta Angle

Horiz. Order 83(91)

Vert. Order

TYPE OF LANDMARK

3/4" x 30" IRON BAR WITH AN ALUMINUM CAP.

BEARINGS ARE REFERENCED TO

GRID NORTH AS PER SECTION DATA.

Describe any record evidence, monument evidence, testimonial evidence or any other material evidence you considered and whether the monument was found or restored through acceptance of an obliterated evidence location.

I intersected the occupied North-South 1/4 line with the occupied line along the North line of the NW1/4-NW1/4.* From this point I searched to the Southeast and found what I believe to be the old rotted remnants of the original bearing tree. The distance West to an ancient tie post at the N1/16NW corner fit Middlebrook's 1876 distance within 1.9 feet. I set an iron bar and cap at this computed point.

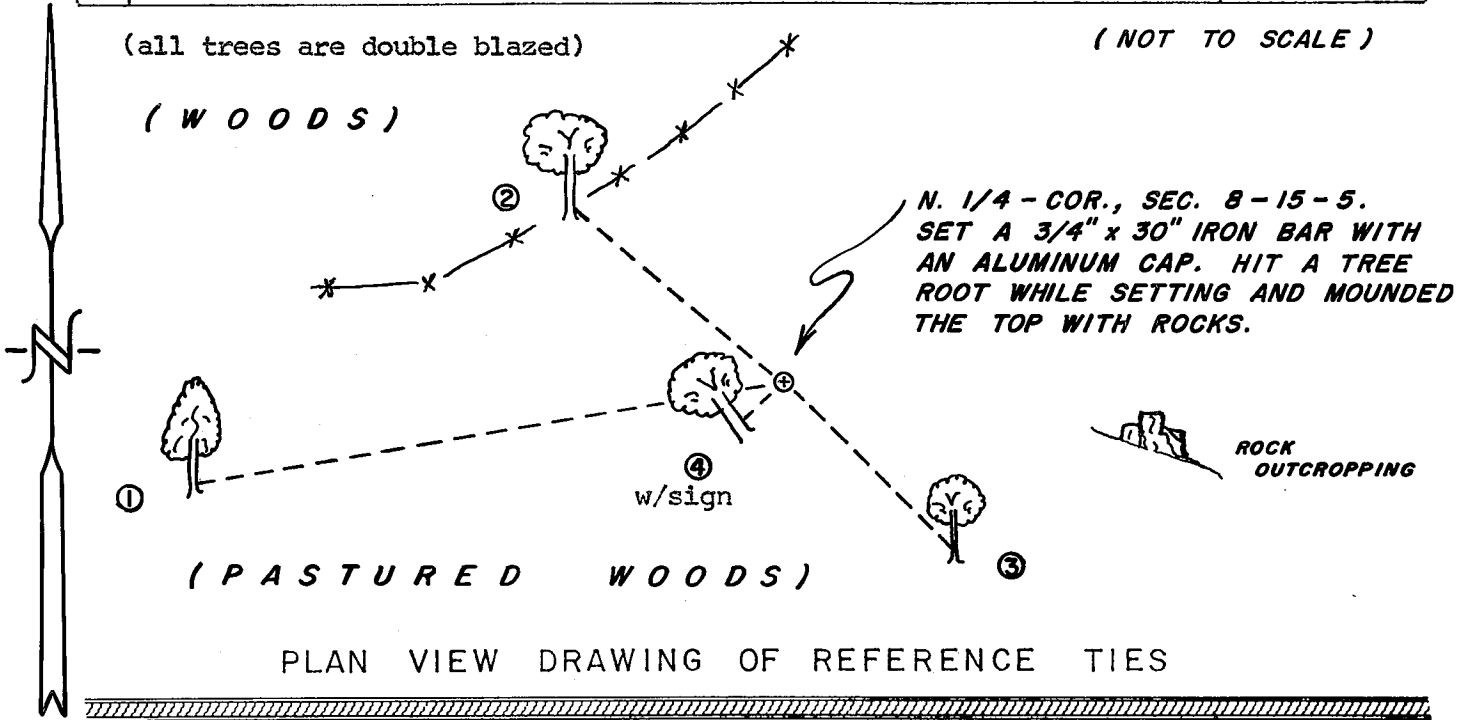
*projected East

Describe or show any material discrepancy between the location of the restored corner and that of the corner previously restored or reestablished.

NONE KNOWN.

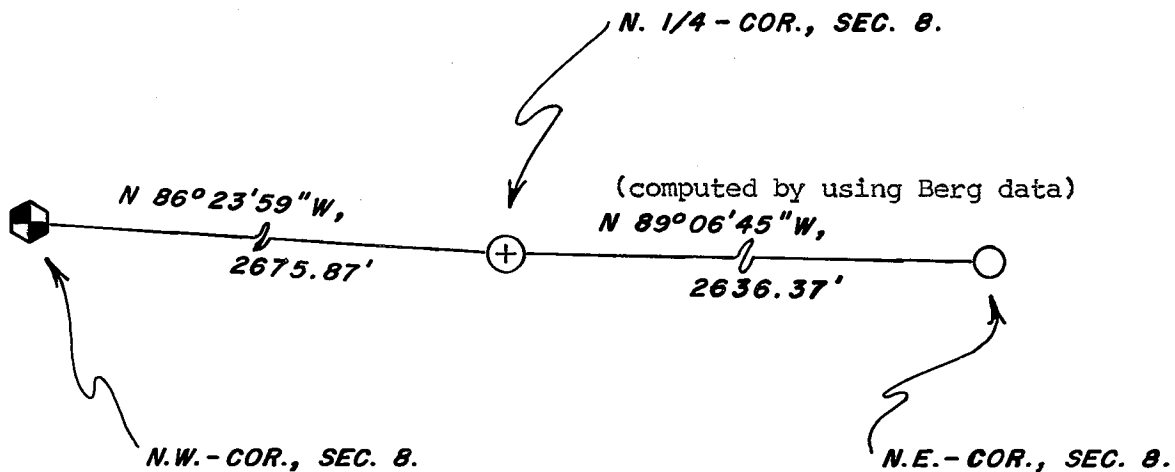
RECORD OF DURABLE WITNESS MONUMENTS
MAGNETIC

NO	DESCRIPTION	BEARING	DISTANCE
1	SET A NAIL IN THE NORTH SIDE OF AN 8" HICKORY	S 80° W	30.89 FT.
2	SET A NAIL IN THE S.W.-SIDE OF A 13" WHITE OAK	N 50° W	14.22 FT.
3	SET A NAIL IN THE N.E.-SIDE OF A 7" WHITE OAK	S 45° E	12.39 FT.
4	SET A NAIL IN THE S.E.-SIDE OF A 16" WHITE OAK	S 47° W	2.91 FT.



MAP SHOWING DISTANCE AND DIRECTION TO OTHER PUBLIC LAND SURVEY CORNERS USED FOR REESTABLISHING THE CORNER

(not to scale) (grid bearings and distances)



I, WILLIAM C. JUNG, COUNTY SURVEYOR
HEREBY CERTIFY THAT THE CORNER LOCATION SHOWN ON THIS RECORD WAS DETERMINED BY ME OR UNDER MY DIRECTION AND CONTROL AND THAT THIS U. S. PUBLIC LAND SURVEY MONUMENT RECORD IS CORRECT AND COMPLETE TO THE BEST OF MY KNOWLEDGE AND BELIEF.

William C. Jung 11/27/00
Signature Date

