

US PUBLIC LAND SURVEY MONUMENT RECORD- ADDENDUM  
 TIE SHEET ADDENDUM-21505060000 (LA CROSSE COUNTY INDEX 37A)

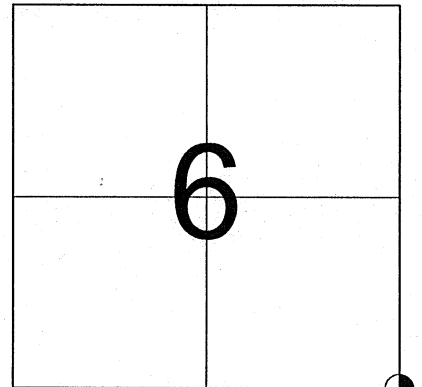
2021-74

SECTION 6 T. 15 N., R. 5 W.  
 LA CROSSE COUNTY, WI.

TOWN OF WASHINGTON

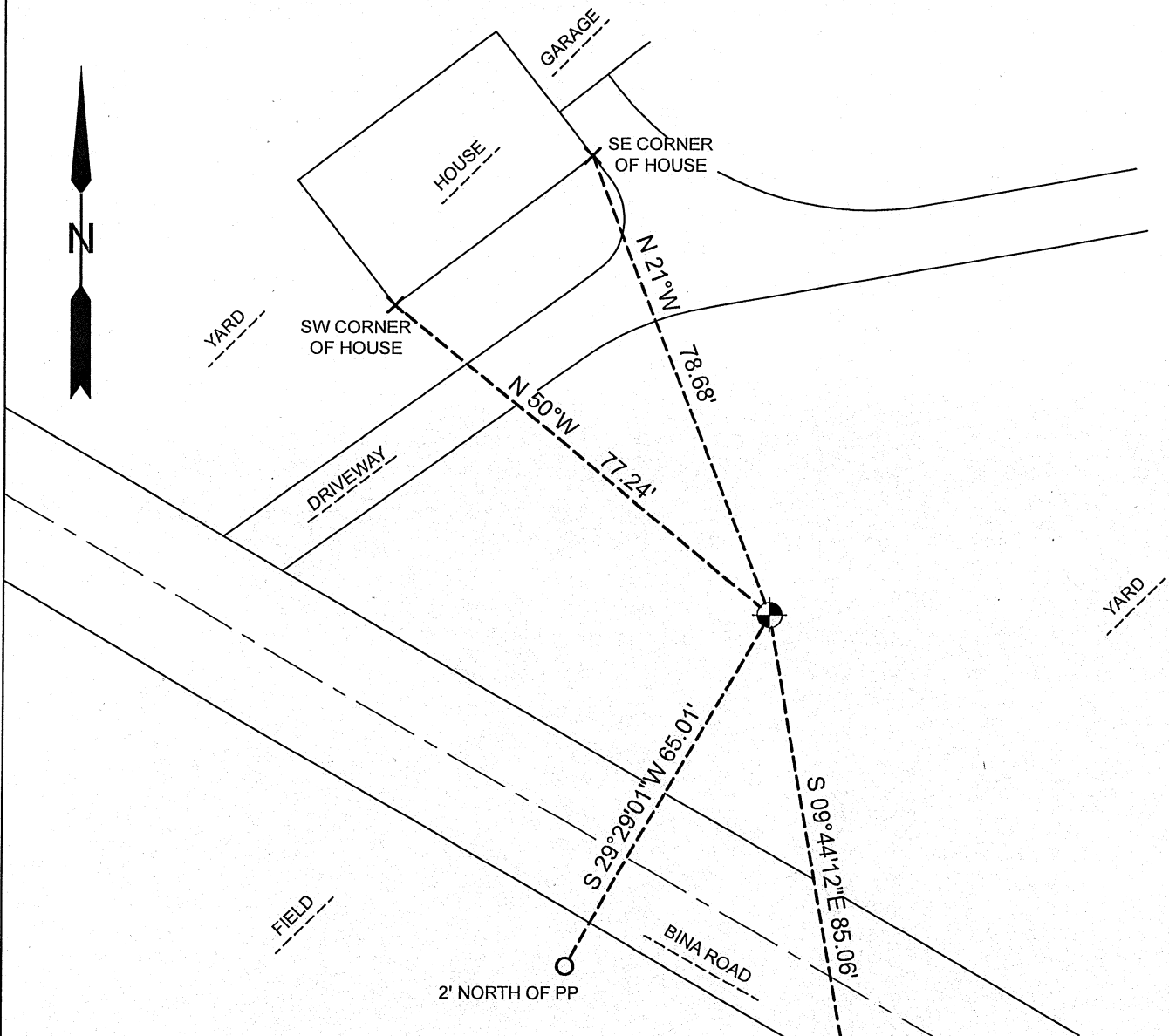
WISCONSIN COORDINATE SYSTEM

DATUM: SPC- WI SOUTH NAD83(91)  
 NORTH: 657,050.062'  
 EAST: 1,701,672.195'  
 ELEVATION: 1,312.42'  
 TYPE OF MONUMENT: LUNDE MARKER  
 CREW: COREY HUGHES, BRYAN MEYER  
 DATE: October 19, 2021



LOCATION OF LANDMARK

**October 19th, 2021-** Bryan Meyer and I performed maintenance on this corner and found the lunde marker of record in a yard. I found 2 of Jung's ties in good condition and established 2 new ties as shown.

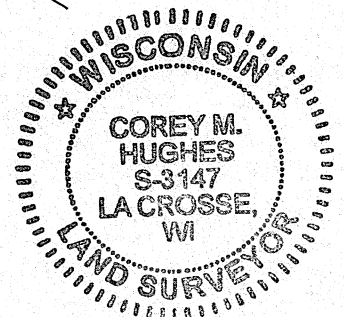


LEGEND

- FOUND LUNDE MARKER
- SET 3/4"X18" IRON BAR (1.50lbs/ft)
- × FOUND BUILDING CORNER AS NOTED

*Corey Hughes*  
 Corey M Hughes

*11-17-2021*  
 Date



I, Corey M. Hughes, Hereby certify that the corner location shown on this record was determined by me or under my direction and control and that this U.S. Public Land Survey Monument Record Addendum is correct and complete to the best of my knowledge and belief.

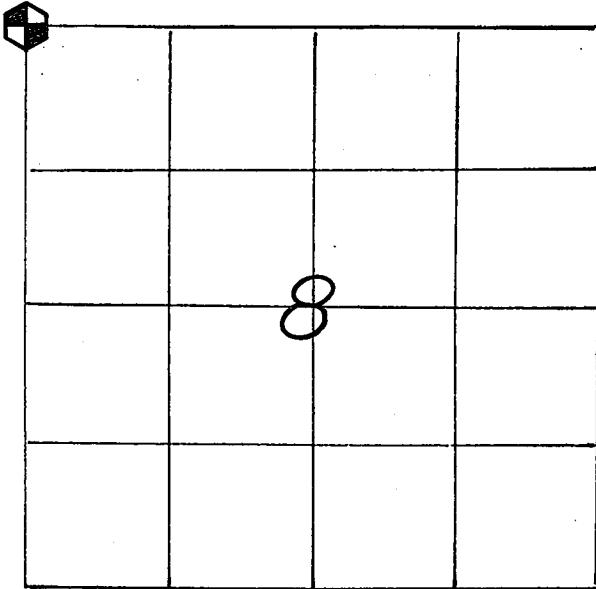
CORNER ID:  
 21505060000

21505060000

## U. S. PUBLIC LAND SURVEY MONUMENT RECORD

SECTION 8 T 15 N, R 5 W, TOWN OF WASHINGTON

LA CROSSE COUNTY



LOCATION OF LANDMARK

CREW: WILLIAM C. JUNG  
 PETER F. FOLLANSBEE  
 DATE: 8/14/2000

## WISCONSIN COORDINATE SYSTEM

North 657,050.062

East 1,701,672.195

Theta Angle

Horiz. Order 83 (91)

Vert. Order

## TYPE OF LANDMARK

BRASS CAP LUNDE MARKER.

BEARINGS ARE REFERENCED TO

GRID NORTH AS PER SECTION DATA.

Describe any record evidence, monument evidence, testimonial evidence or any other material evidence you considered and whether the monument was found or restored through acceptance of an obliterated evidence location.

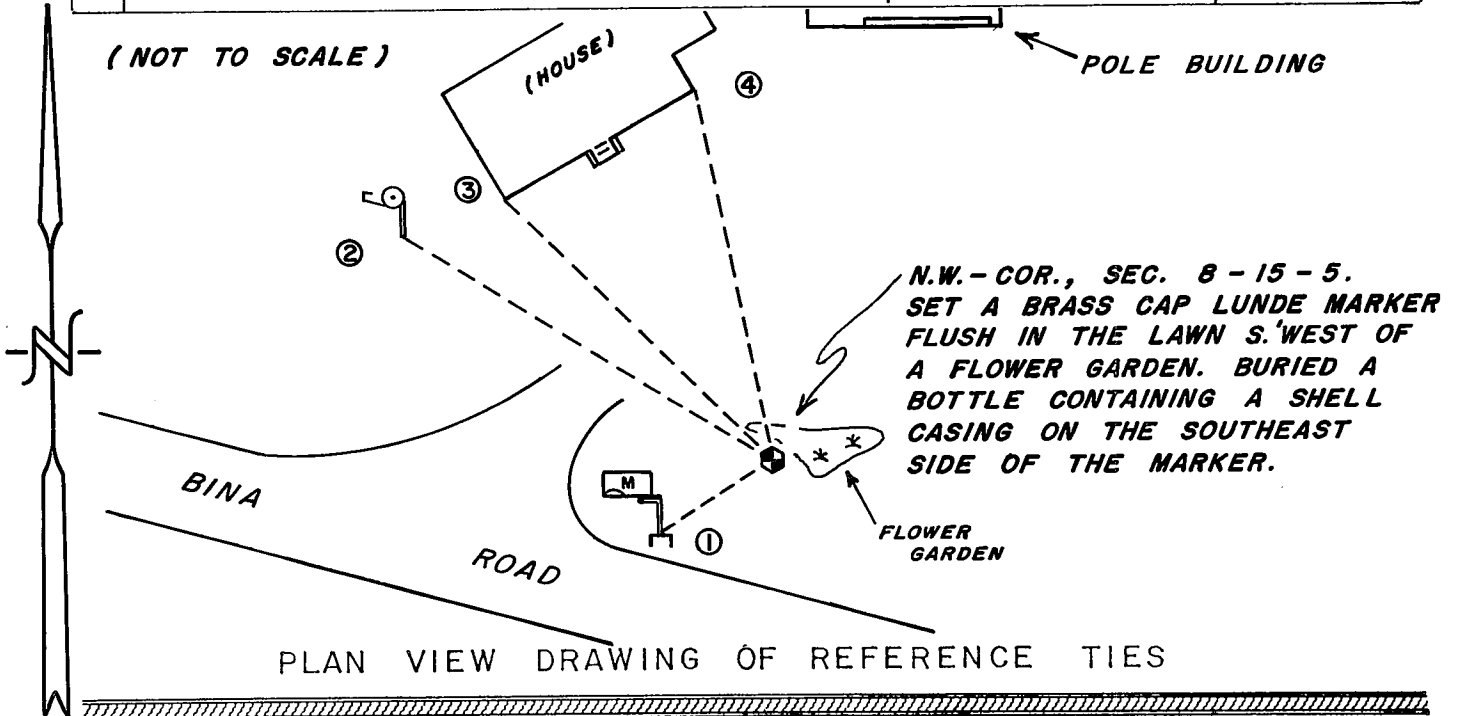
I set the corner on line with the N1/16NW and N1/4 corners and at a distance from the N1/16NW equal to the distance between this "40" corner and the N1/4 corner. A Lunde was set at the corner. This corner fits the section data to the West and South very well, along with the occupied line to the East just South of the barn.

Describe or show any material discrepancy between the location of the restored corner and that of the corner previously restored or reestablished.

NONE KNOWN.

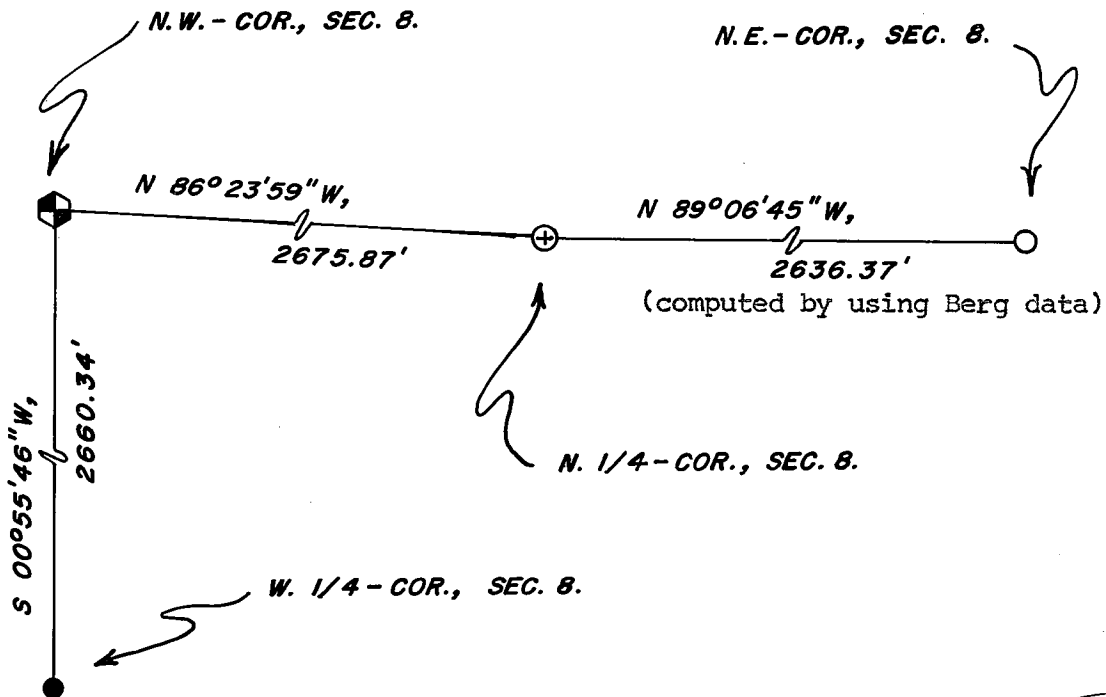
RECORD OF DURABLE WITNESS MONUMENTS

NO	DESCRIPTION	BEARING	DISTANCE
1	CENTER OF POST IN CONCRETE BASE FOR MAILBOX	S.'WESTERLY±	28.73 FT.
2	CENTER OF POST FOR SATELLITE DISH(AT GROUND)	N.'WESTERLY±	89.40 FT.
3	S.W.-COR. CONCRETE BLOCK HOUSE FOUNDATION	N.'WESTERLY±	77.24 FT.
4	S.E.-COR. CONCRETE BLOCK HOUSE FOUNDATION	N.'WESTERLY±	78.68 FT.



MAP SHOWING DISTANCE AND DIRECTION TO OTHER PUBLIC LAND SURVEY CORNERS USED FOR REESTABLISHING THE CORNER

(not to scale) (grid bearings and distances)



I, WILLIAM C. JUNG, COUNTY SURVEYOR  
 HEREBY CERTIFY THAT THE CORNER LOCATION SHOWN ON THIS RECORD WAS DETERMINED BY ME OR UNDER MY DIRECTION AND CONTROL AND THAT THIS U. S. PUBLIC LAND SURVEY MONUMENT RECORD IS CORRECT AND COMPLETE TO THE BEST OF MY KNOWLEDGE AND BELIEF.

William C. Jung 11/27/00  
 Signature Date

