

US PUBLIC LAND SURVEY MONUMENT RECORD- ADDENDUM
TIE SHEET ADDENDUM-21505062000 (LA CROSSE COUNTY INDEX 16A)

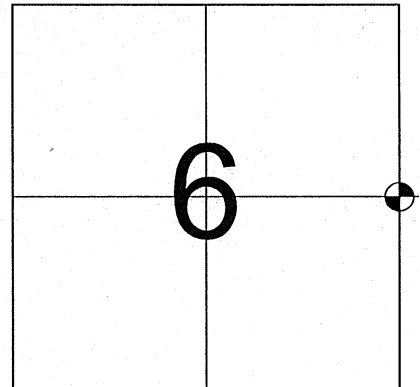
2021-75

SECTION 6 T. 15 N., R. 5 W.
LA CROSSE COUNTY, WI.

TOWN OF WASHINGTON

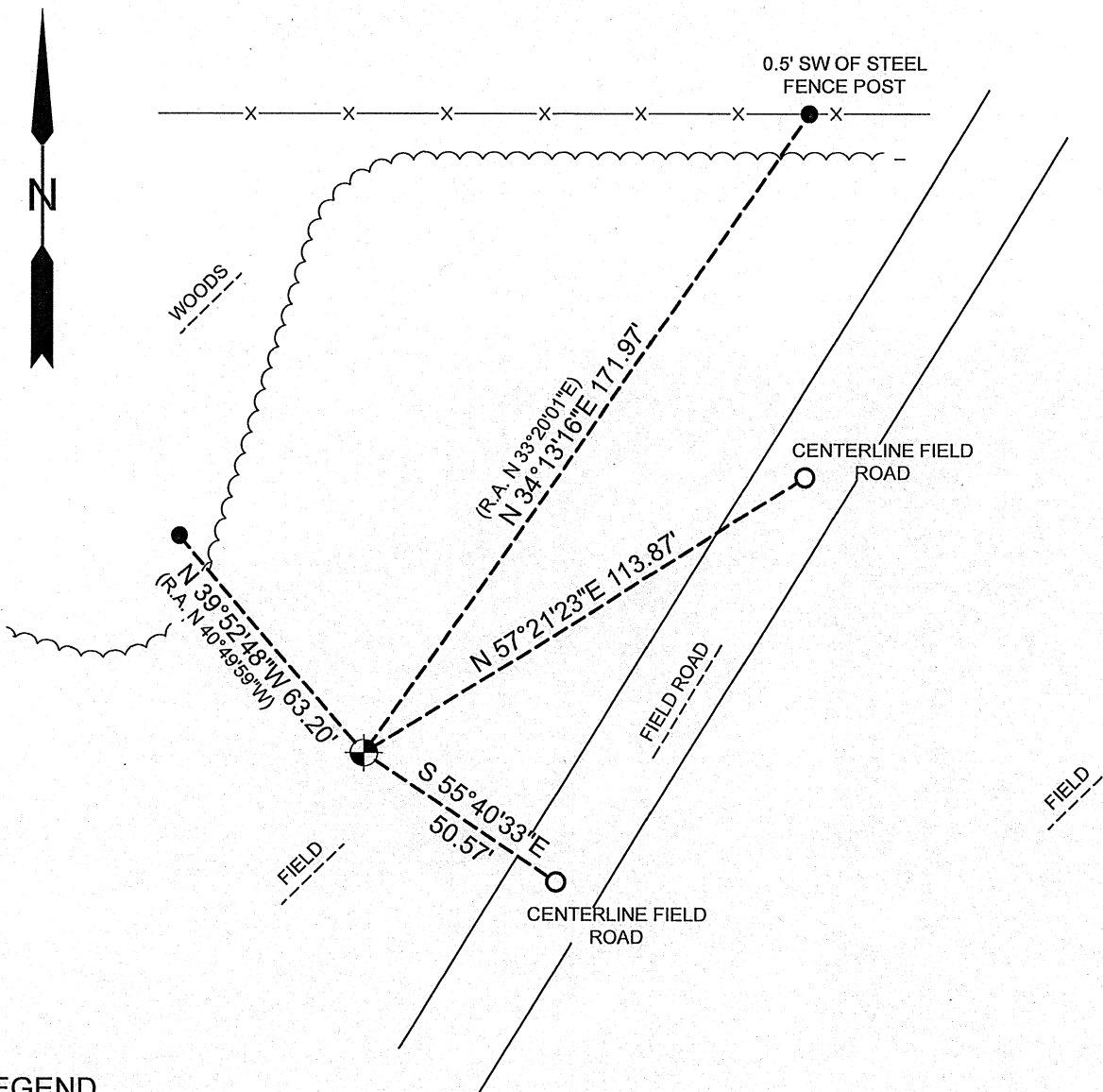
WISCONSIN COORDINATE SYSTEM

DATUM: SPC- WI SOUTH NAD83(91)
NORTH: 659,607.864'
EAST: 1,701,720.776'
ELEVATION: 1,255.30'
TYPE OF MONUMENT: 3/4" IRON BAR
CREW: COREY HUGHES, BRYAN MEYER
DATE: October 26, 2021



LOCATION OF LANDMARK

October 26th, 2021- Bryan Meyer and I performed maintenance on this corner and found the 3/4" iron bar of record down 9" in a field. I found 2 of Fechner's ties in good condition and established 2 new ties as shown.

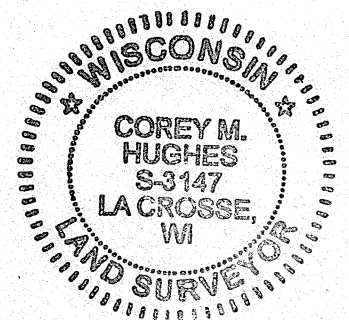


LEGEND

- FOUND 3/4" IRON BAR
- SET 3/4"X18" IRON BAR (1.50lbs/ft)
- FOUND 3/4" IRON BAR

Corey Hughes
Corey M. Hughes

11-17-2021
Date

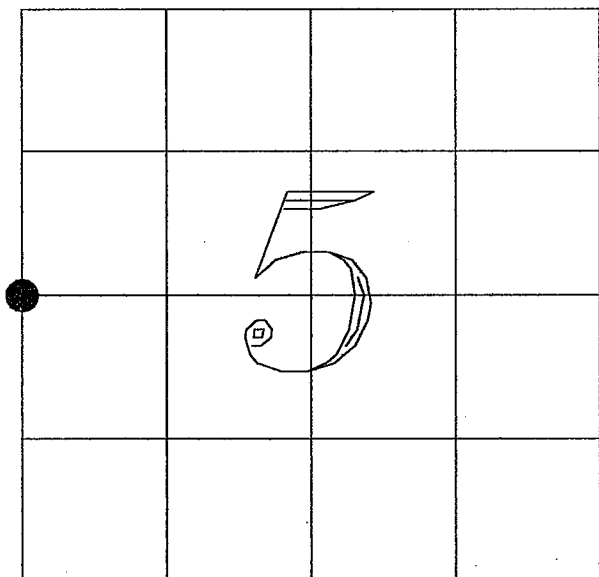


I, Corey M. Hughes, Hereby certify that the corner location shown on this record was determined by me or under my direction and control and that this U.S. Public Land Survey Monument Record Addendum is correct and complete to the best of my knowledge and belief.

CORNER ID:
21505062000

U. S. PUBLIC LAND SURVEY MONUMENT RECORD

SECTION 5 T 15 N, R 5 W, TOWN OF WASHINGTON
LA CROSSE COUNTY



LOCATION OF LANDMARK

CREW: CHRIS FECHNER

JOSH NAVE

DATE: 12/04/2001

Describe any record evidence, monument evidence, testimonial evidence, or any other material evidence you considered and whether the monument was found or restored through acceptance of an obliterated evidence location.

I set this corner by "law", single proportionate measurement.

Describe or show any material discrepancy between the location of the restored corner and that of the corner previously restored or reestablished.

*The corner falls 146.6 feet South of an East-West fence line.
 The original government notes state "there is a powerful local attraction in way of the lines in this region."*

WISCONSIN COORDINATE SYSTEM

North

East

Theta Angle

Horiz. Order

Vert. Order

TYPE OF LANDMARK

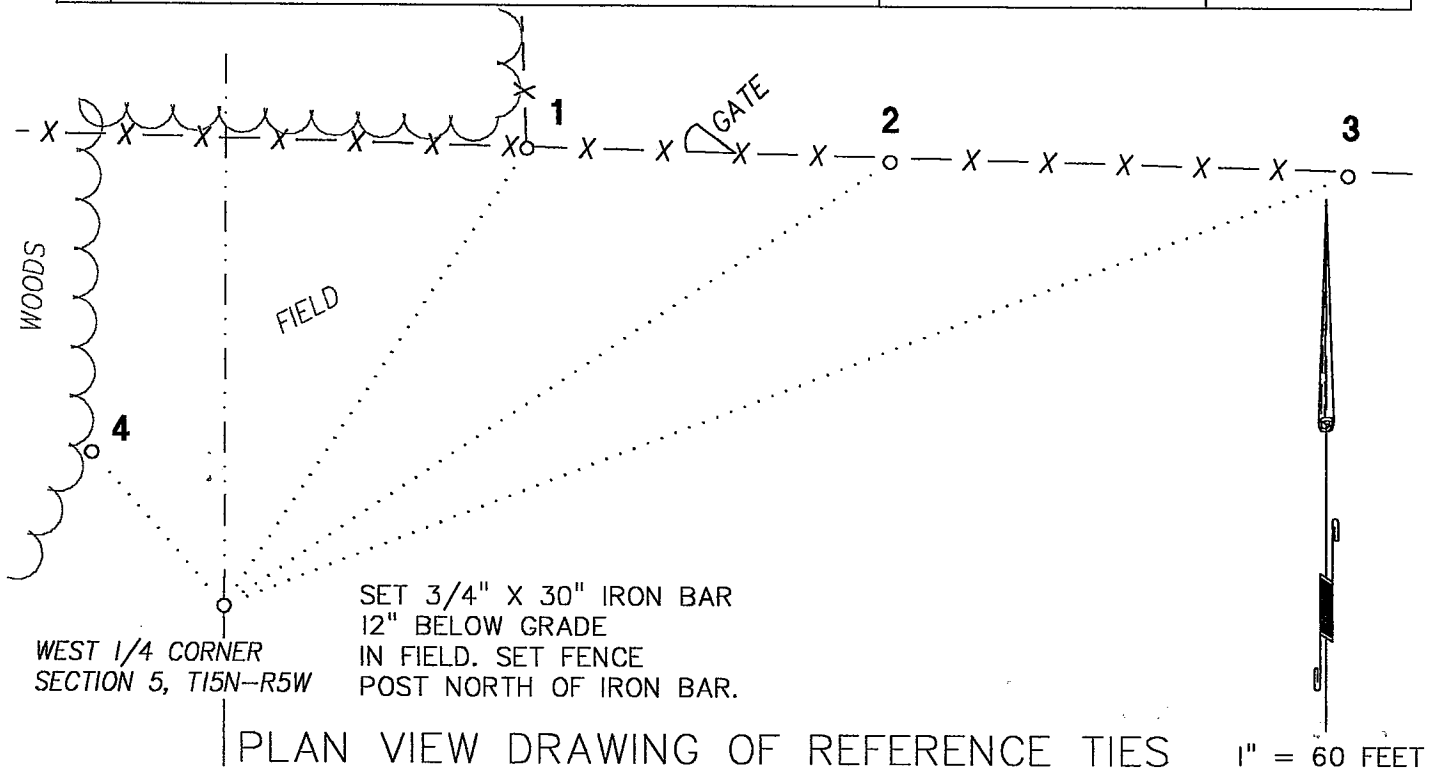
3/4" X 30" IRON BAR

BEARINGS ARE REFERENCED TO

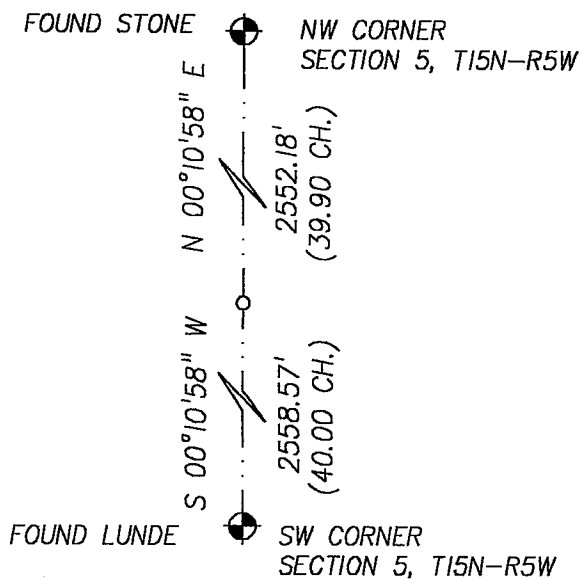
LA CROSSE COUNTY COORDINATE SYSTEM

RECORD OF DURABLE WITNESS MONUMENTS

NO	DESCRIPTION	BEARING	DISTANCE
1	SET 3/4" X 30" IRON BAR	N 33°20'01" E	171.97'
2	SET 3/4" X 30" IRON BAR	N 56°05'05" E	250.53'
3	SET 3/4" X 30" IRON BAR	N 68°48'52" E	376.32'
4	SET 3/4" X 30" IRON BAR	N 40°49'59" W	63.20'



MAP SHOWING DISTANCE AND DIRECTION TO OTHER PUBLIC LAND SURVEY CORNERS USED FOR REESTABLISHING THE CORNER



I, CHRISTOPHER W. FECHNER RLS 2448

HEREBY CERTIFY THAT THE CORNER LOCATION SHOWN ON THIS RECORD WAS DETERMINED BY ME OR UNDER MY DIRECTION AND CONTROL AND THAT THIS U. S. PUBLIC LAND SURVEY MONUMENT RECORD IS CORRECT AND COMPLETE TO THE BEST OF MY KNOWLEDGE AND BELIEF.



Christopher W. Fechner

1/11/02

Signature

Date

Seal