

US PUBLIC LAND SURVEY MONUMENT RECORD-ADDENDUM

2018-87

TIE SHEET ADDENDUM-21505070000 (LA CROSSE COUNTY INDEX 63A)

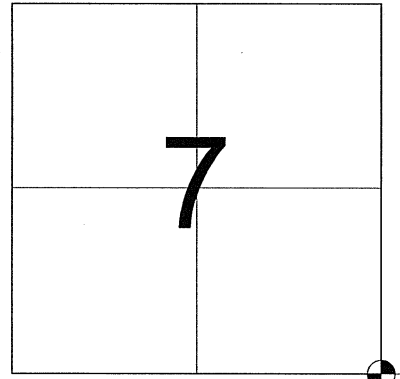
SECTION 7 T. 15 N., R. 5 W.

TOWN OF WASHINGTON

LA CROSSE COUNTY, WI.

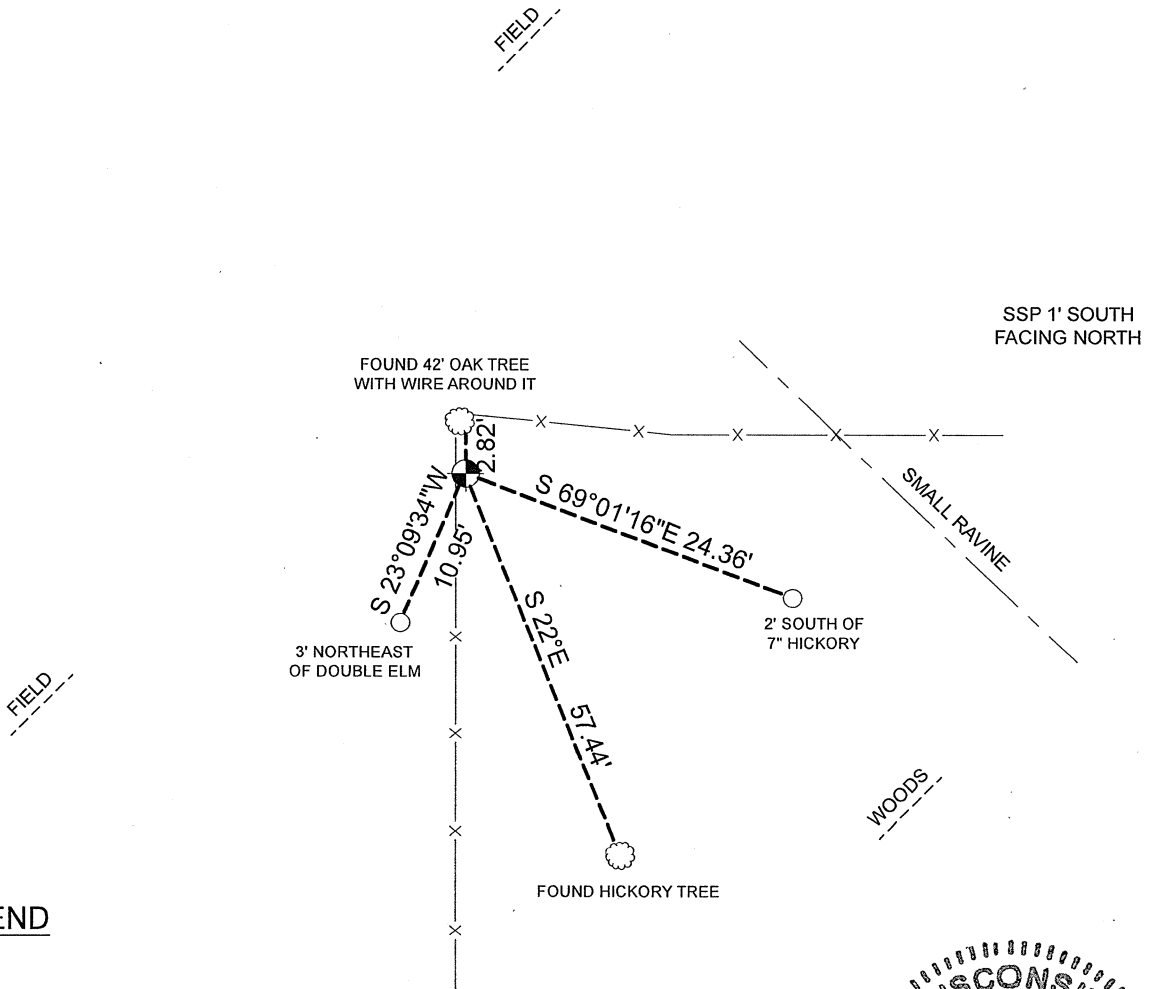
WISCONSIN COORDINATE SYSTEM

DATUM: SPC- WI SOUTH NAD83(91)
 NORTH: 651,736.000'
 EAST: 1,701,557.072'
 ELEVATION: 1,284.84'
 TYPE OF MONUMENT: AXEL SHAFT
 CREW: BRYAN MEYER, COREY HUGHES
 DATE: NOVEMBER 15, 2018
 WEATHER: SUNNY 32°






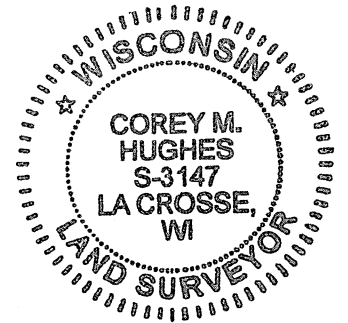
LOCATION OF LANDMARK

Bryan Meyer and I performed maintenance on this corner on November 15, 2018. We found the Axel shaft of record at the corner bent and leaning easterly. We were unable to straighten or remove the found Axel, but we were able to plumb the Axel so that the top of the Axel shaft is directly over the bottom of the shaft and mounded with dirt and rocks. The Axel shaft is now up 8". We found 2 of W. Jung's ties and established 2 new ties as shown below.



LEGEND

-  AXEL SHAFT
-  SET 3/4"X18" IRON BAR (1.50lbs/ft)
-  TREE AS DESCRIBED



Corey M Hughes
 Corey M. Hughes S-3147

1-7-19
 Date

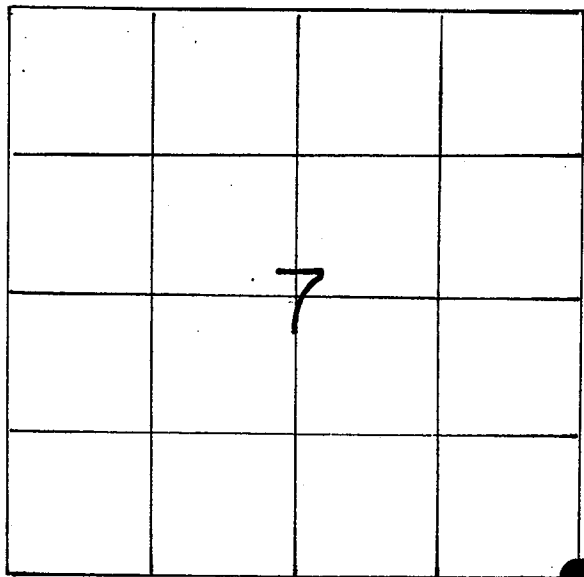
I, Corey M. Hughes, P.L.S., hereby certify that the corner location shown on this record was determined by me or under my direction and control and that this U.S. Public Land Survey Monument Record Addendum is correct and complete to the best of my knowledge and belief.

CORNER ID:
 21505070000

U. S. PUBLIC LAND SURVEY MONUMENT RECORD

SECTION 7 T 15 N, R 5 W, TOWN OF Washington

LA CROSSE COUNTY



LOCATION OF LANDMARK

WISCONSIN COORDINATE SYSTEM
North
East
Theta Angle
Horiz. Order
Vert. Order
TYPE OF LANDMARK
Existing buggy axle
BEARINGS ARE REFERENCED TO
True

Crew: William C. Jung
Peter F. Follansbee

Dates: 11/26/90 and 1/17/91

Describe any record evidence, monument evidence, testimonial evidence or any other material evidence you considered and whether the monument was found or restored through acceptance of an obliterated evidence location.

I found an old buggy axle at the occupied corner which I accepted as the best available evidence of the original government corner position. This axle is not of record but is identical to other axles that I have found at corners over the years while doing section*throughout West central Wisconsin. Also, the 28" black oak to the Southeast appears to have a scar which I think is an overgrown blaze pointing toward the axle.

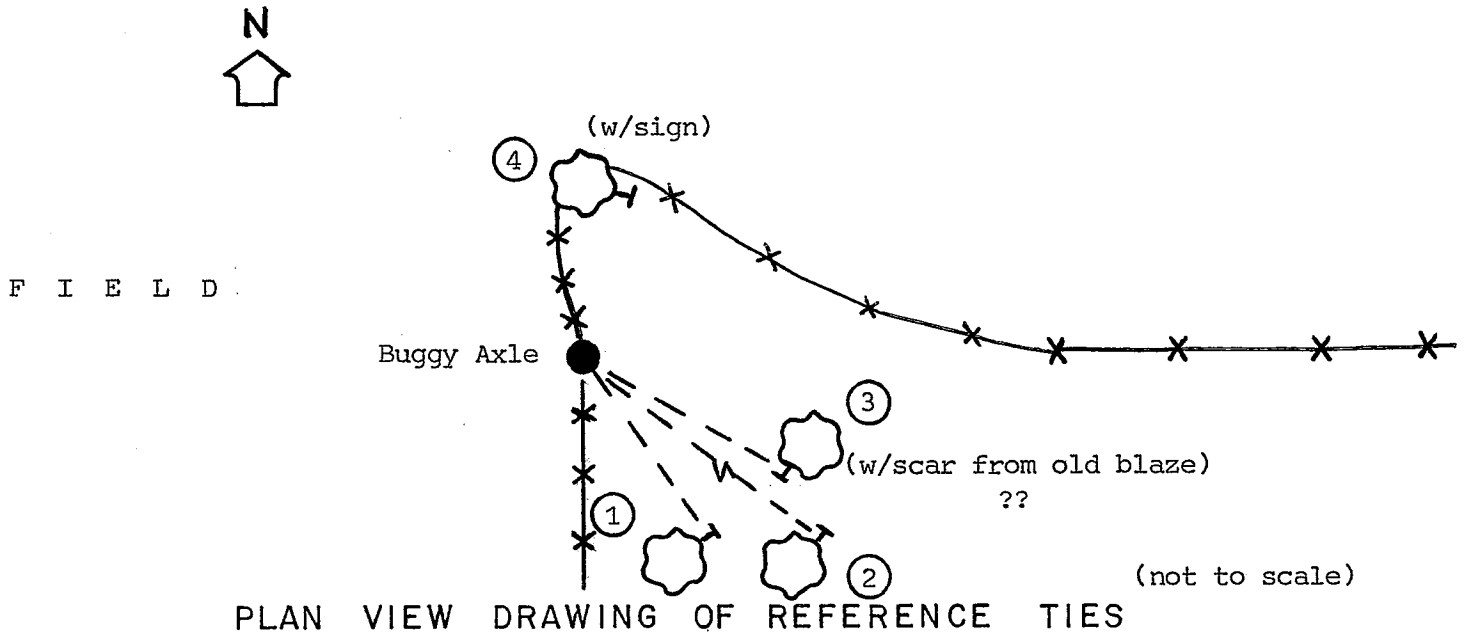
*work

Describe or show any material discrepancy between the location of the restored corner and that of the corner previously restored or reestablished.

None known.

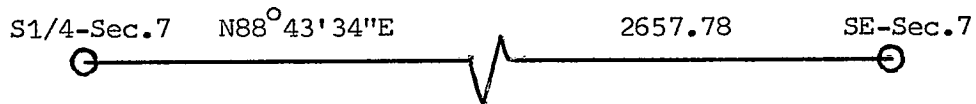
RECORD OF DURABLE WITNESS MONUMENTS

NO	DESCRIPTION	BEARING	DISTANCE
1	P.K. nail in single blazed 23" black oak	S7°E ±	70.33
2	" 11" hickory	S22°E ±	57.44
3	" 28" black oak	S53°E ±	14.02
4	" 31" white oak	North±	2.82



MAP SHOWING DISTANCE AND DIRECTION TO OTHER PUBLIC LAND SURVEY CORNERS USED FOR REESTABLISHING THE CORNER

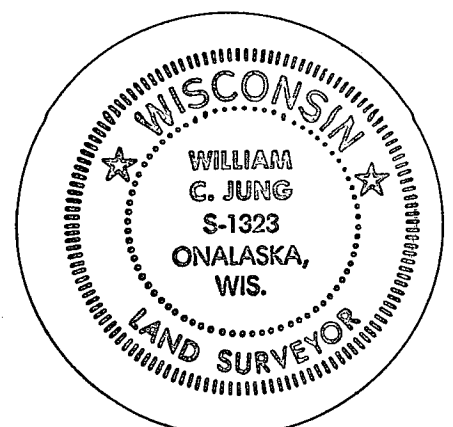
(not to scale)



I, William C. Jung, Deputy County Surveyor,
 HEREBY CERTIFY THAT THE CORNER LOCATION SHOWN ON THIS RECORD
 WAS DETERMINED BY ME OR UNDER MY DIRECTION AND CONTROL AND
 THAT THIS U. S. PUBLIC LAND SURVEY MONUMENT RECORD IS CORRECT
 AND COMPLETE TO THE BEST OF MY KNOWLEDGE AND BELIEF.

William C. Jung
 Signature

January 22, 1991
 Date



Seal