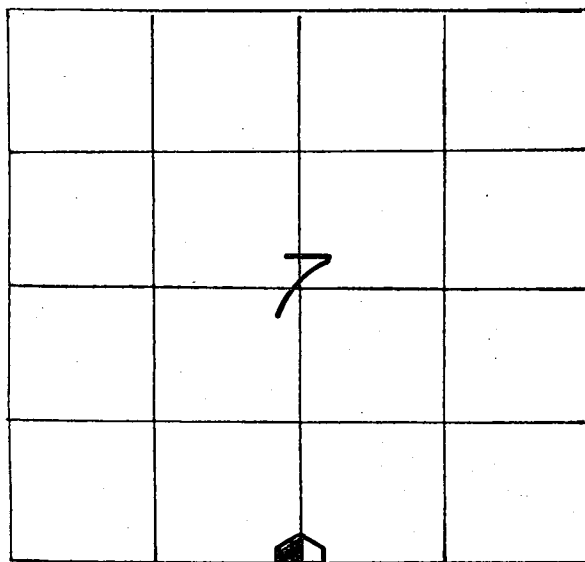


U. S. PUBLIC LAND SURVEY MONUMENT RECORD

SECTION 7 T 15 N, R 5 W, TOWN OF WASHINGTON

LA CROSSE COUNTY



LOCATION OF LANDMARK

CREW: WILLIAM C. JUNG
 PETER F. FOLLANSBEE
 DATE: 3/15/2007

WISCONSIN COORDINATE SYSTEM

North

East

Theta Angle

Horiz. Order

Vert. Order

TYPE OF LANDMARK

BRASS CAP LUNDE MARKER.

BEARINGS ARE REFERENCED TO

TRUE NORTH AS PER SECTION DATA.

Describe any record evidence, monument evidence, testimonial evidence or any other material evidence you considered and whether the monument was found or restored through acceptance of an obliterated evidence location.

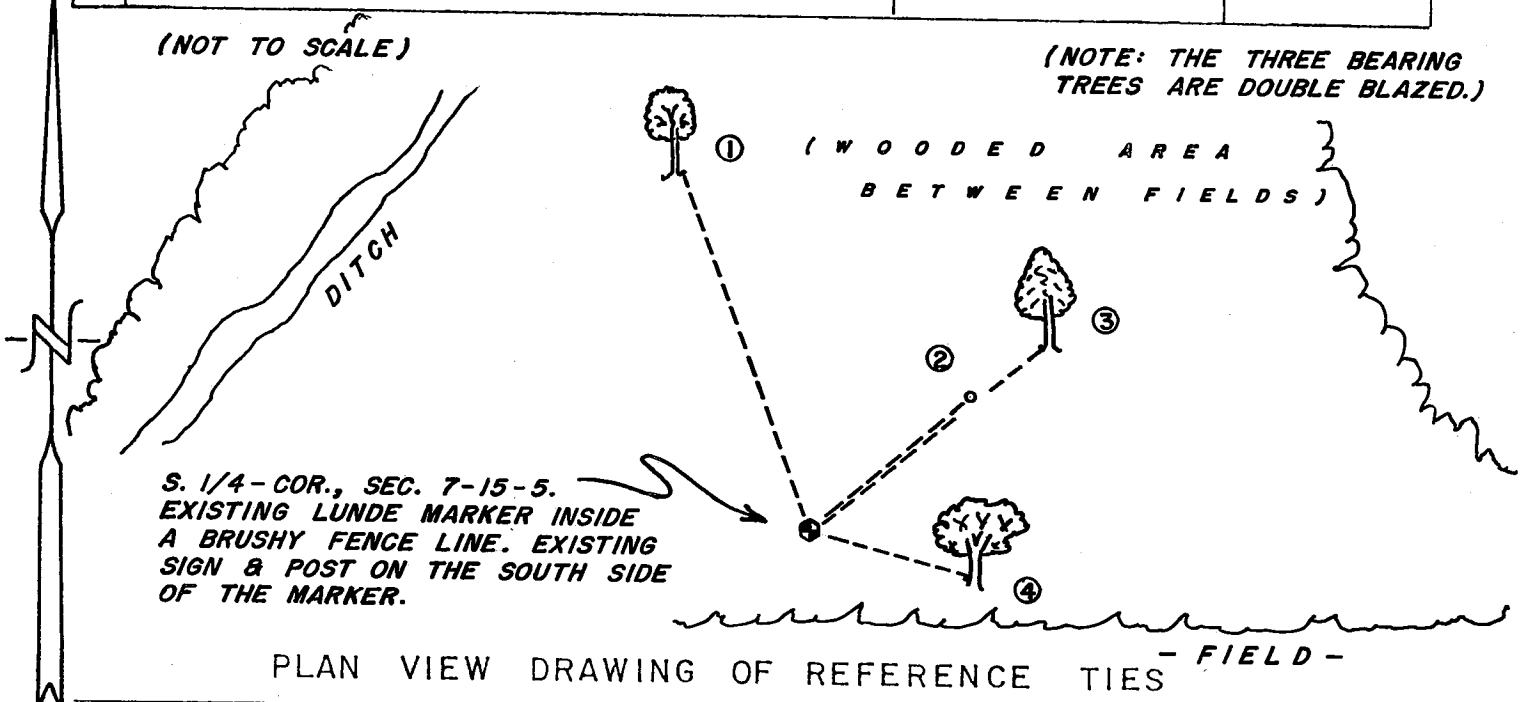
We found the Lunde that we set back in 1991 and made new ties.

Describe or show any material discrepancy between the location of the restored corner and that of the corner previously restored or reestablished.

NONE KNOWN.

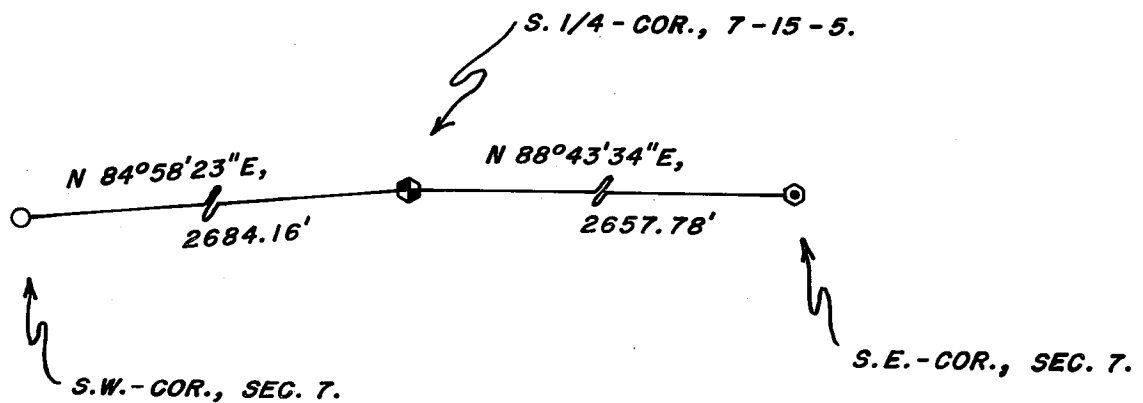
RECORD OF DURABLE WITNESS MONUMENTS

NO	DESCRIPTION	MAGNETIC BEARING	DISTANCE
1	SET A NAIL IN N.E.-SIDE OF A 7" BURR OAK	N 20° W	SLOPE = 29.52'
2	EXISTING 1" x 30" IRON PIPE	N 50° E	16.27 FT.
3	SET A NAIL IN S.E.-SIDE OF AN 11" ASH	N 51° E	23.20 FT.
4	SET A NAIL IN N.W.-SIDE OF A 13" BOX ELDER	S 75° E	12.93 FT.



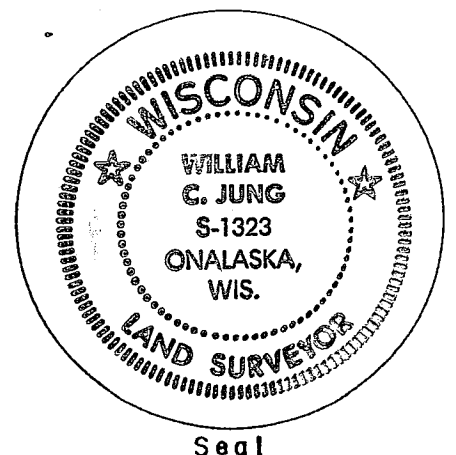
MAP SHOWING DISTANCE AND DIRECTION TO OTHER PUBLIC LAND SURVEY CORNERS USED FOR REESTABLISHING THE CORNER

(TRUE BEARINGS)
(NOT TO SCALE)



I, WILLIAM C. JUNG, COUNTY SURVEYOR
HEREBY CERTIFY THAT THE CORNER LOCATION SHOWN ON THIS RECORD
WAS DETERMINED BY ME OR UNDER MY DIRECTION AND CONTROL AND
THAT THIS U. S. PUBLIC LAND SURVEY MONUMENT RECORD IS CORRECT
AND COMPLETE TO THE BEST OF MY KNOWLEDGE AND BELIEF.

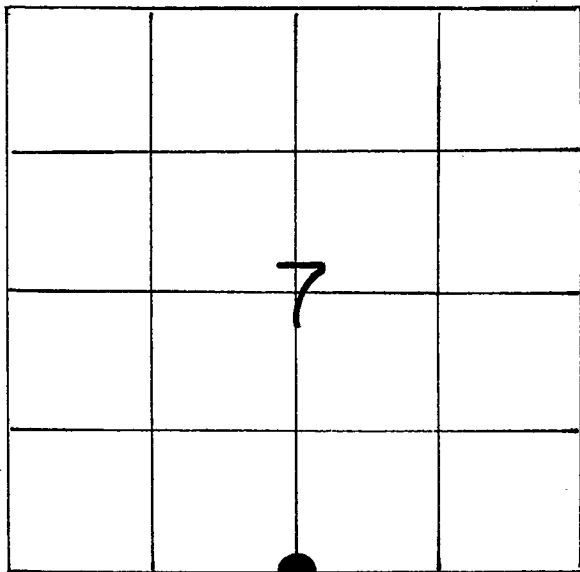
William C. Jung 5/17/07
Signature Date



U. S. PUBLIC LAND SURVEY MONUMENT RECORD

SECTION 7 T 15 N, R 5 W, TOWN OF Washington

LA CROSSE COUNTY



LOCATION OF LANDMARK

WISCONSIN COORDINATE SYSTEM
North
East
Theta Angle
Horiz. Order
Vert. Order
TYPE OF LANDMARK
Brass capped Lunde marker
BEARINGS ARE REFERENCED TO
True

Crew: William C. Jung
 Peter F. Follansbee

Date: January 28, 1991

Describe any record evidence, monument evidence, testimonial evidence or any other material evidence you considered and whether the monument was found or restored through acceptance of an obliterated evidence location.

I set the corner at a computed location, on line with the old occupied fences to the East and West and also proportionately between the section corners. The mile along the South line of Section 7 is long but the occupied corners at the "40" corners fit the extra footage. There is a "kink" at this 1/4 corner, but again, the occupation at this corner and the two "40" corners fits this "kink". A study of a 1938 aerial photo shows that the occupation was the same back then. This mile should be straight, but I don't think that it ever was. After surveying the line between Sections 5 and 6, the following quote was entered in the original notes:*

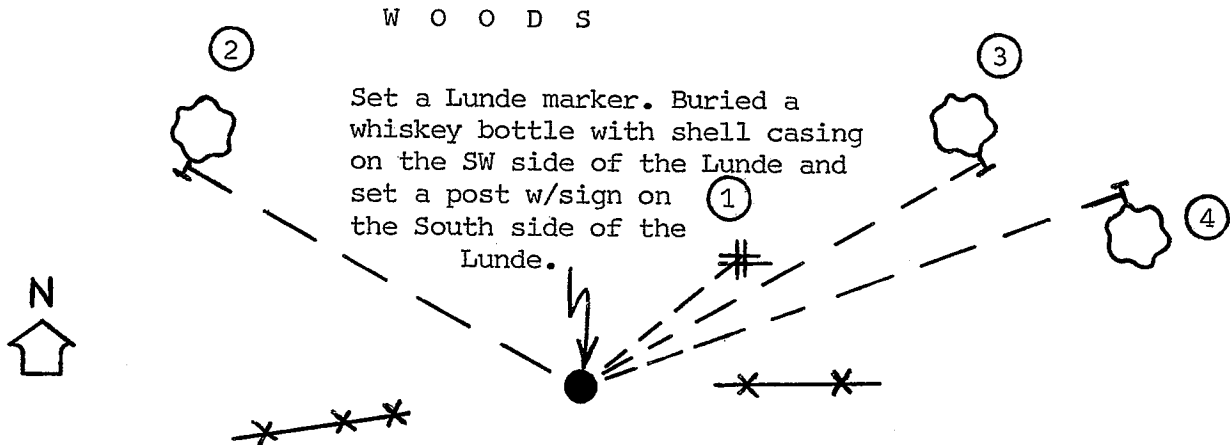
Describe or show any material discrepancy between the location of the restored corner and that of the corner previously restored or reestablished.

None known.

* "The above and some of the forgoing variations cannot be relied upon as there is a powerful local attraction in way of the lines in this region." This being the case, it may explain some of the problems that I have encountered in this area. The corner was monumented with a Lunde marker.

RECORD OF DURABLE WITNESS MONUMENTS
Magnetic

NO	DESCRIPTION	BEARING	DISTANCE
1	Set 1"x30" iron pipe. West, 25.7' is a 27"W.O. stump. It was not old enough to be an original.	N47°E	16.23
2	P.K. nail in double blazed 11" cherry	N50°W	36.32
3	" 17" oak	N52°E	42.10
4	" 15" oak	N60°E	47.68

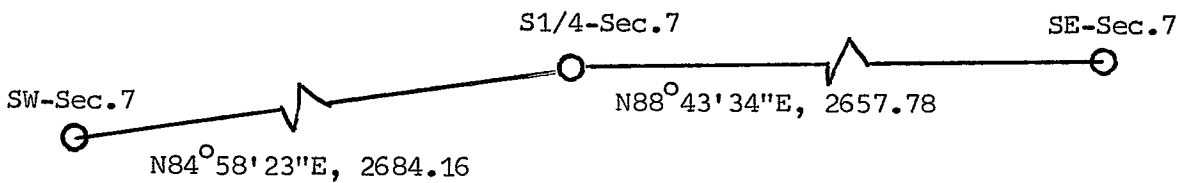


F I E L D (not to scale)

PLAN VIEW DRAWING OF REFERENCE TIES

MAP SHOWING DISTANCE AND DIRECTION TO OTHER PUBLIC LAND SURVEY CORNERS USED FOR REESTABLISHING THE CORNER

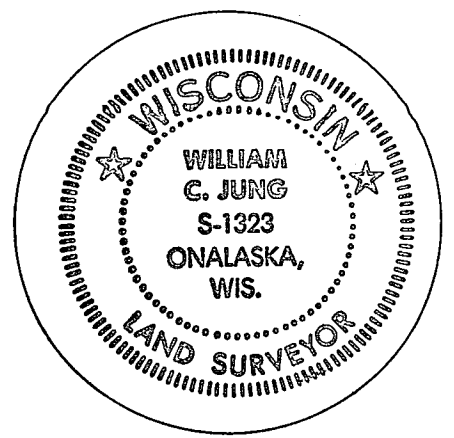
(not to scale)



I, William C. Jung, Deputy County Surveyor,
HEREBY CERTIFY THAT THE CORNER LOCATION SHOWN ON THIS RECORD WAS DETERMINED BY ME OR UNDER MY DIRECTION AND CONTROL AND THAT THIS U. S. PUBLIC LAND SURVEY MONUMENT RECORD IS CORRECT AND COMPLETE TO THE BEST OF MY KNOWLEDGE AND BELIEF.

William C. Jung
Signature

February 6, 1991
Date



Seal