

US PUBLIC LAND SURVEY MONUMENT RECORD-ADDENDUM

2018-86

TIE SHEET ADDENDUM-21505080000 (LA CROSSE COUNTY INDEX 61A)

SECTION 8 T. 15 N., R. 5 W.

LA CROSSE COUNTY, WI.

TOWN OF WASHINGTON

WISCONSIN COORDINATE SYSTEM

DATUM: SPC- WI SOUTH NAD83(91)

NORTH: 651,544.870'

EAST: 1,706,850.294'

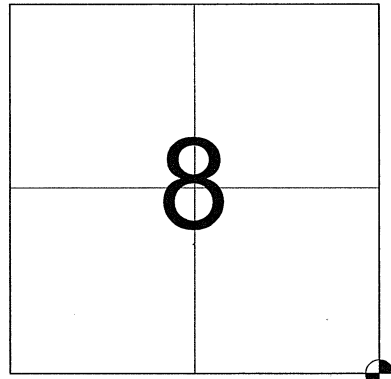
ELEVATION: 1,347.15'

TYPE OF MONUMENT: LUNDE MARKER

CREW: BRYAN MEYER, COREY HUGHES

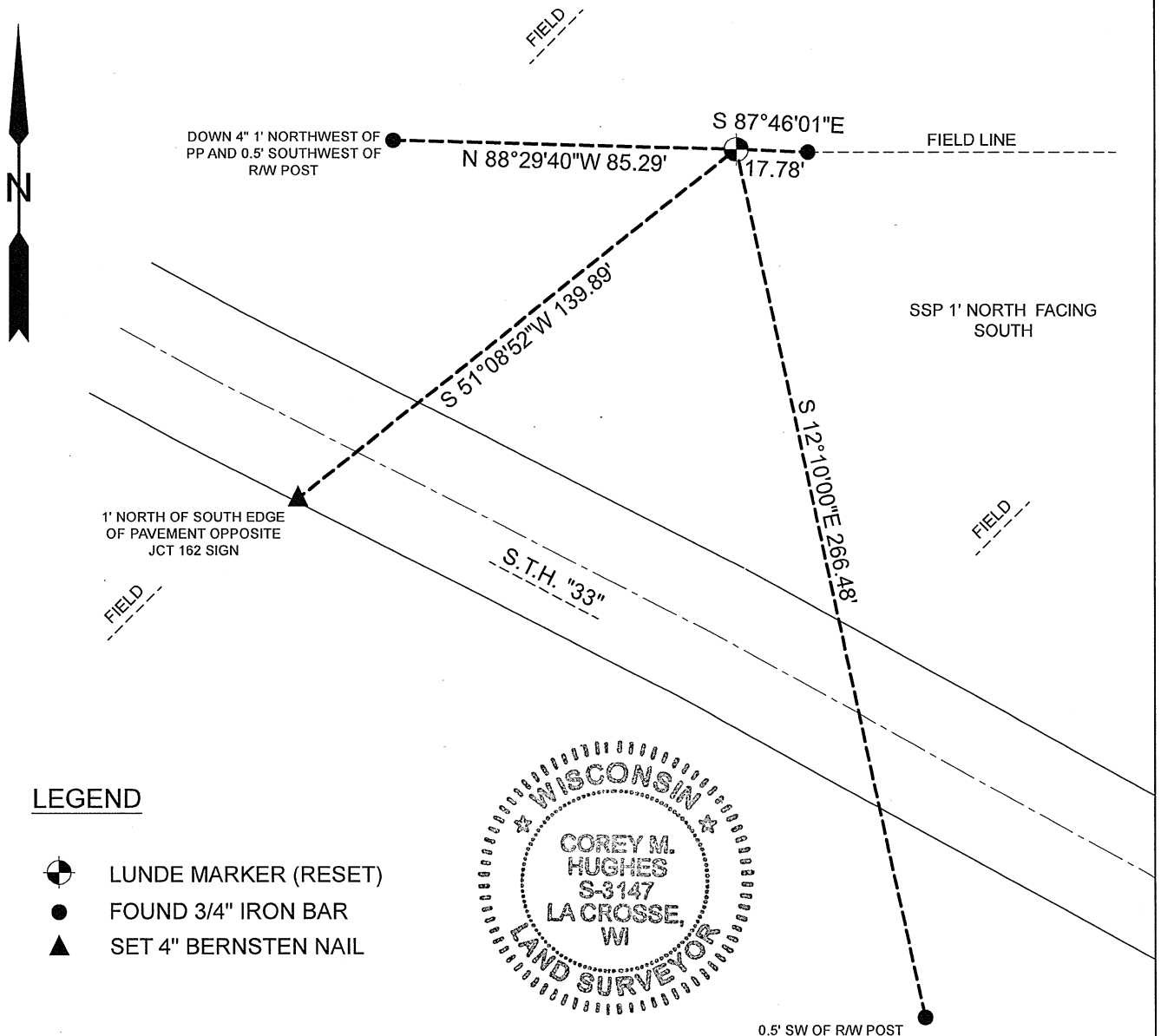
DATE: NOVEMBER 15, 2018

WEATHER: SUNNY 32°



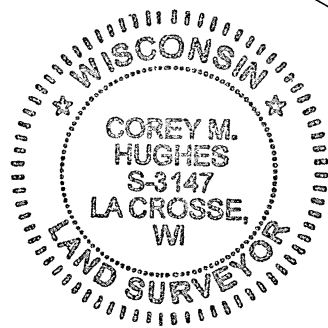
LOCATION OF LANDMARK

Bryan Meyer and I performed maintenance on this corner on November 15, 2018. We found the Lunde Marker leaning. We reset the Lunde Marker at the previously found location and mounded with dirt and rocks. We found 1 of W. Jung's ties and established 3 new ties as shown below.



LEGEND

- LUNDE MARKER (RESET)
- FOUND 3/4" IRON BAR
- SET 4" BERNSTEN NAIL



Corey M. Hughes
Corey M. Hughes S-3147

1-7-19
Date

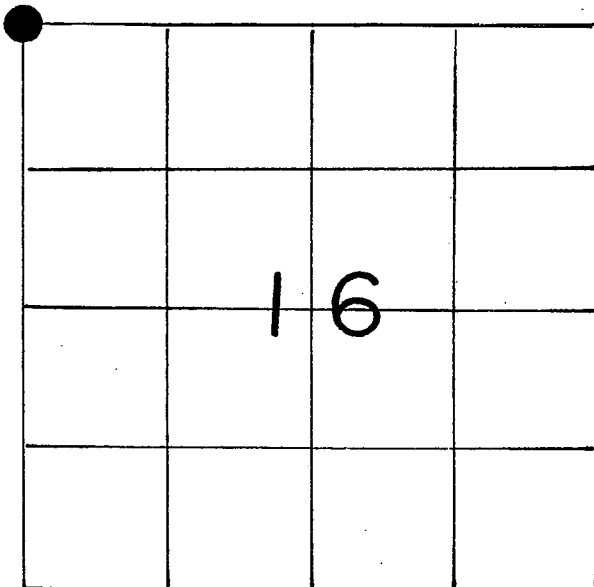
I, Corey M. Hughes, P.L.S., hereby certify that the corner location shown on this record was determined by me or under my direction and control and that this U.S. Public Land Survey Monument Record Addendum is correct and complete to the best of my knowledge and belief.

CORNER ID:
21505080000

U. S. PUBLIC LAND SURVEY MONUMENT RECORD

SECTION 16 T 15 N, R 5 W, TOWN OF Washington

LA CROSSE COUNTY



LOCATION OF LANDMARK

Crew: William C. Jung
Peter FollansbeeDate: 12/8/89

Describe any record evidence, monument evidence, testimonial evidence or any other material evidence you considered and whether the monument was found or restored through acceptance of an obliterated evidence location.

I measured the distance between the North fence at the South 1/4 Corner of Section 8 and the S1/16-SE Corner of Section 8 (there being an old North fence here also). I then set this section corner at a distance from said S1/16-SE Corner equal to the previous measured "40" distance (1315'+) and in the old East-West fence line. The South line of the SE1/4 of Section 8 and the North line of the NW1/4 of Section 16 fit the original notes proportionally almost perfectly. The 1/2 miles North and South also fit very well. With the corner set as such, the West 1/4 Corner of Section 16 is only 9" off line. I set a brass capped Lunde marker at my computed corner.

Describe or show any material discrepancy between the location of the restored corner and that of the corner previously restored or reestablished.

I do not agree with the 1" iron bar found to the East if that iron bar was intended to be the corner.

South Zone - 1927 Adjustment

WISCONSIN COORDINATE SYSTEM

North 651547.61

East 1738376.94

Theta Angle

Horiz. Order

Vert. Order

TYPE OF LANDMARK

Brass capped Lunde marker

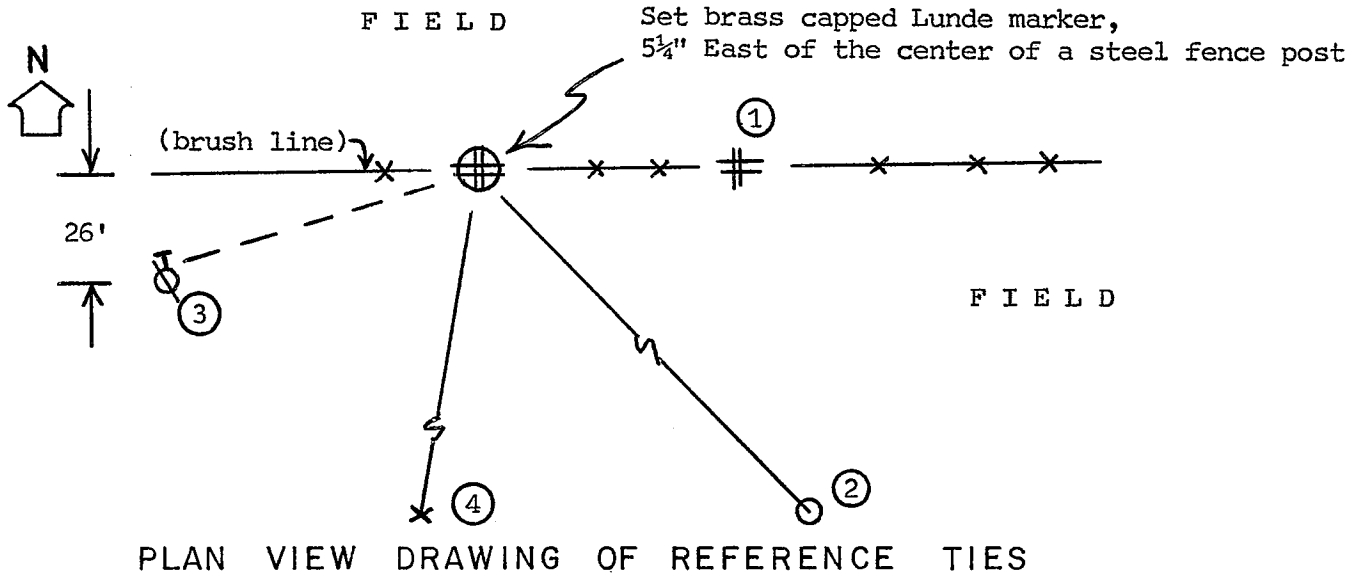
BEARINGS ARE REFERENCED TO

Assumed North

Note: See back for Grid conversion.

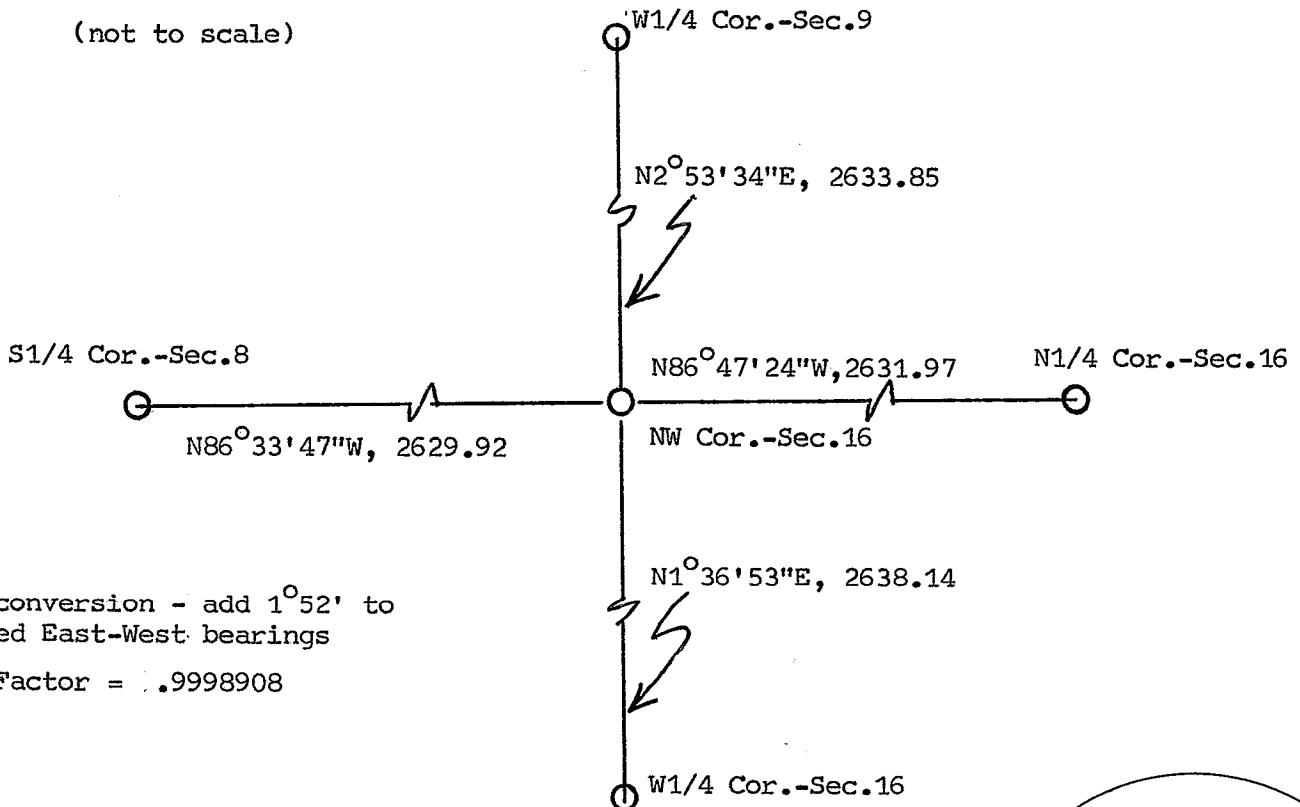
RECORD OF DURABLE WITNESS MONUMENTS

NO	DESCRIPTION	BEARING	DISTANCE
1	Existing 1" round iron bar	Assumed=N87°03'34"W	17.88'
2	D.O.T. marker "Ritter"	Assumed=N32°03'50"W Grid =N33°55'50"W	156.685
3	To P.K. nail on North side of power pole	-----	slope=114.61'
4	Approximate intersection of "33" and "162"	-----	125.5'±



MAP SHOWING DISTANCE AND DIRECTION TO OTHER PUBLIC LAND SURVEY CORNERS USED FOR REESTABLISHING THE CORNER

(not to scale)



Note:

Grid conversion - add 1°52' to Assumed East-West bearings

Grid Factor = .9998908

I, William C. Jung, Deputy County Surveyor,
HEREBY CERTIFY THAT THE CORNER LOCATION SHOWN ON THIS RECORD
WAS DETERMINED BY ME OR UNDER MY DIRECTION AND CONTROL AND
THAT THIS U. S. PUBLIC LAND SURVEY MONUMENT RECORD IS CORRECT
AND COMPLETE TO THE BEST OF MY KNOWLEDGE AND BELIEF.

William C. Jung
Signature

December 15, 1989
Date



Seal