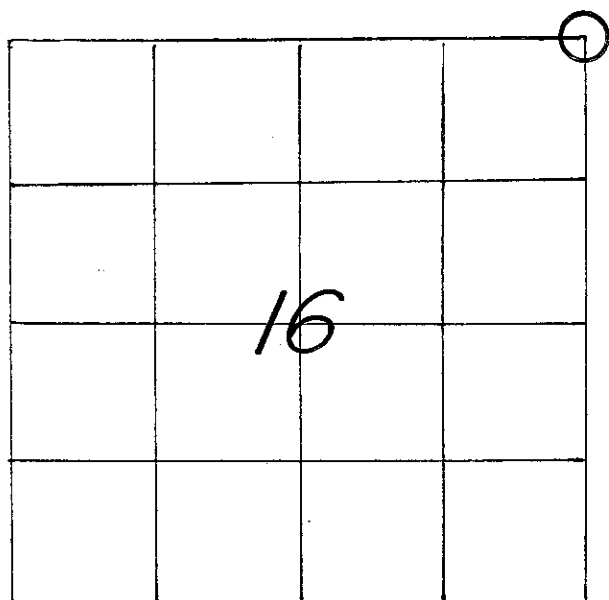


## U. S. PUBLIC LAND SURVEY MONUMENT RECORD

SECTION 16 T 15 N, R 5 W, TOWN OF WASHINGTON

LA CROSSE COUNTY



LOCATION OF LANDMARK

CREW: **BRYAN H. MEYER**  
**PETER F. FOLLANSBEE**  
 DATE: 4/21/2009

WISCONSIN COORDINATE SYSTEM	
North	651,418.347
East	1,712,115.467
Theta Angle	
Horiz. Order	
Vert. Order	
DATUM:	NAD 1983('91)
TYPE OF LANDMARK	
1" x 28" IRON PIPE	
BEARINGS ARE REFERENCED TO	
GRID NORTH AS PER SECTION DATA.	

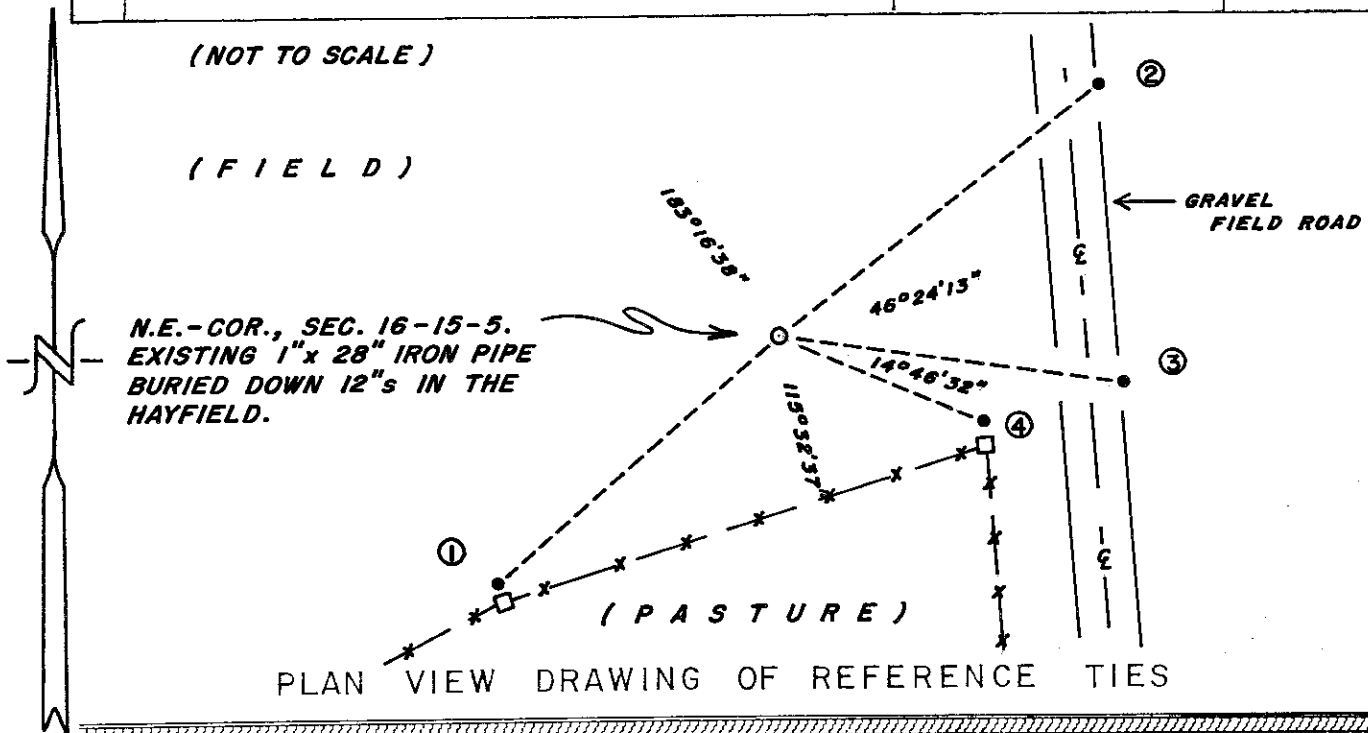
Describe any record evidence, monument evidence, testimonial evidence or any other material evidence you considered and whether the monument was found or restored through acceptance of an obliterated evidence location.

Describe or show any material discrepancy between the location of the restored corner and that of the corner previously restored or reestablished.

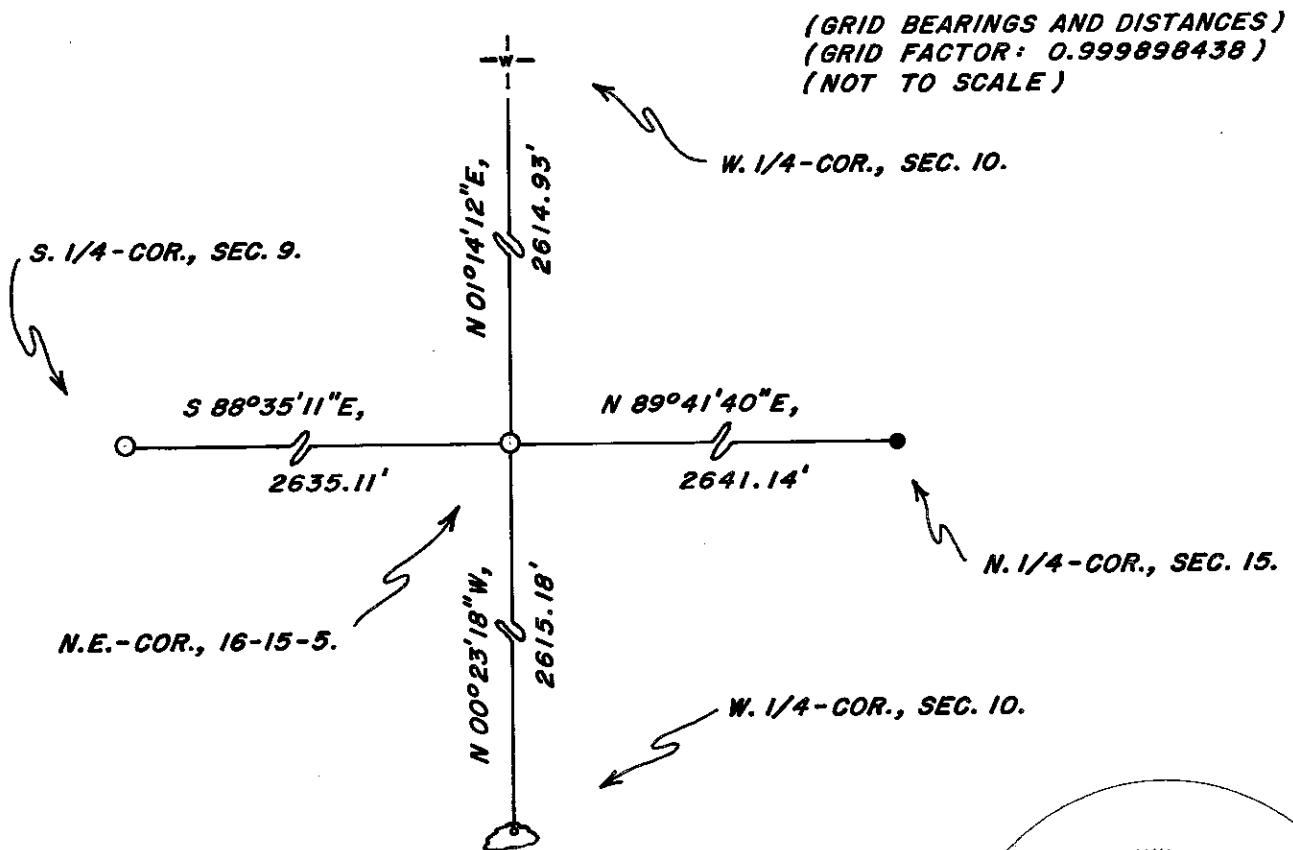
RECORD OF DURABLE WITNESS MONUMENTS

MAGNETIC

NO	DESCRIPTION	BEARING	DISTANCE
1	SET A 3/4" x 30" IRON BAR 1' N. OF R.R.-TIE FENCE POST	S 49° W	77.74 FT.
2	SET A 3/4" x 30" IRON BAR 7' E. OF FIELD ROAD E	N 52° E	84.30 FT.
3	SET A 3/4" x 30" IRON BAR 7' E. OF FIELD ROAD E	S 82° E	72.02 FT.
4	SET A 3/4" x 30" IRON BAR 2' N. OF R.R.-TIE FENCE POST	S 67° E	46.17 FT.



MAP SHOWING DISTANCE AND DIRECTION TO OTHER PUBLIC LAND SURVEY CORNERS USED FOR REESTABLISHING THE CORNER

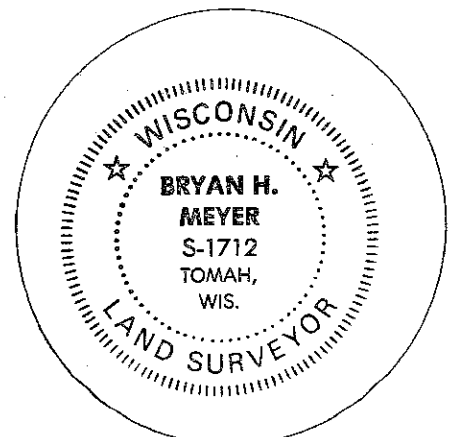


I, BRYAN H. MEYER, COUNTY SURVEYOR  
HEREBY CERTIFY THAT THE CORNER LOCATION SHOWN ON THIS RECORD  
WAS DETERMINED BY ME OR UNDER MY DIRECTION AND CONTROL AND  
THAT THIS U. S. PUBLIC LAND SURVEY MONUMENT RECORD IS CORRECT  
AND COMPLETE TO THE BEST OF MY KNOWLEDGE AND BELIEF.

Signature

Date

July 17, 2010

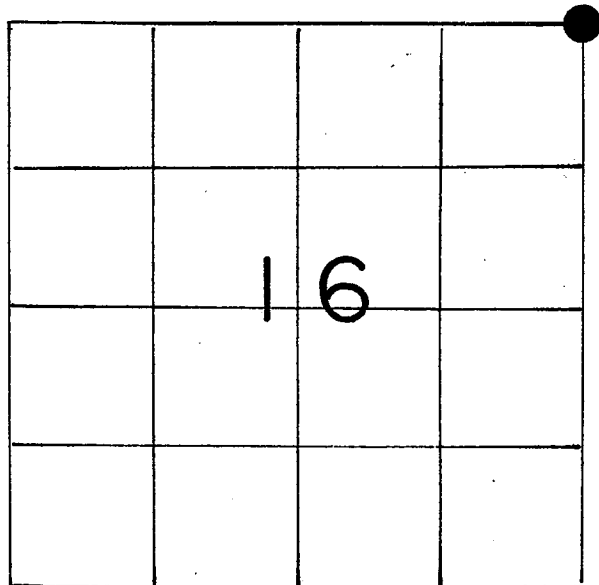


Seal

U. S. PUBLIC LAND SURVEY MONUMENT RECORD

SECTION 16 T 15 N, R 5 W, TOWN OF Washington

LA CROSSE COUNTY



LOCATION OF LANDMARK

Crew: William C. Jung  
Peter Follansbee

Date: December 11, 1989

Describe any record evidence, monument evidence, testimonial evidence or any other material evidence you considered and whether the monument was found or restored through acceptance of an obliterated evidence location.

I set the corner by double proportionate measurement and monumented it with a 1" iron pipe, down over 1' in a hayfield. DPM seems to be the best method and fits the conditions and field evidence. It also seems to best fit the original government survey.

Note: The frost was deep and the wind chill well below zero when we set this corner.

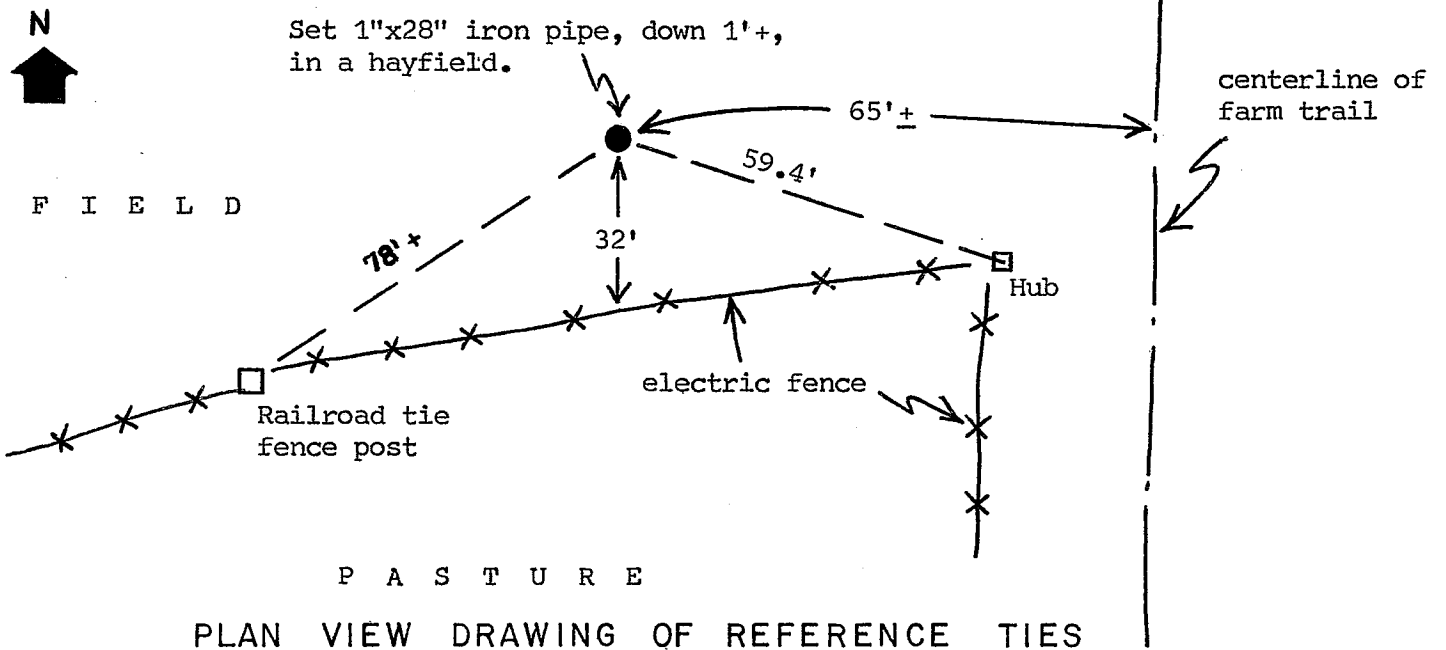
Describe or show any material discrepancy between the location of the restored corner and that of the corner previously restored or reestablished.

None known.

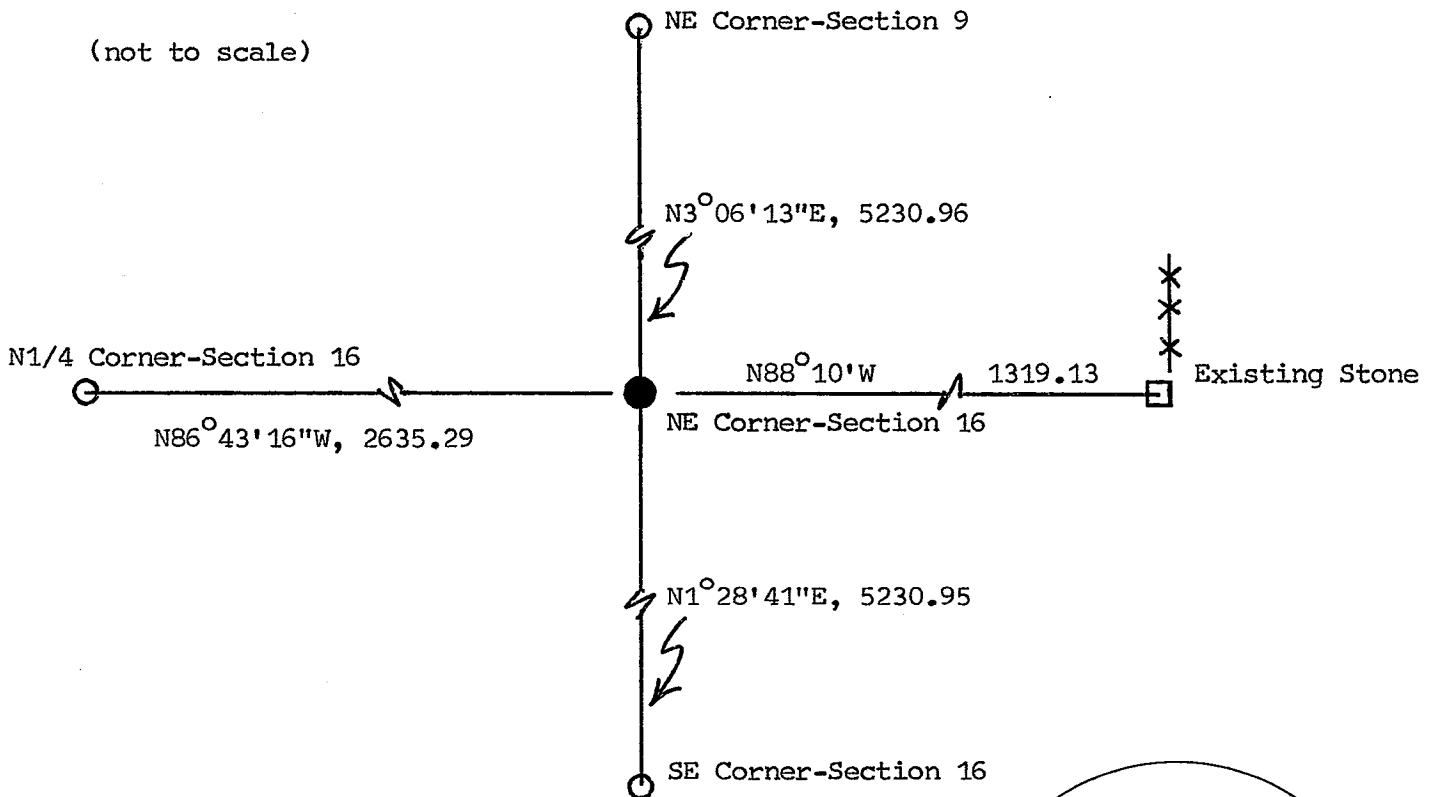
WISCONSIN COORDINATE SYSTEM
North
East
Theta Angle
Horiz. Order
Vert. Order
TYPE OF LANDMARK
1"x28" iron pipe
BEARINGS ARE REFERENCED TO
Assumed North

RECORD OF DURABLE WITNESS MONUMENTS

NO	DESCRIPTION	BEARING	DISTANCE
1			
2			
3			
4			

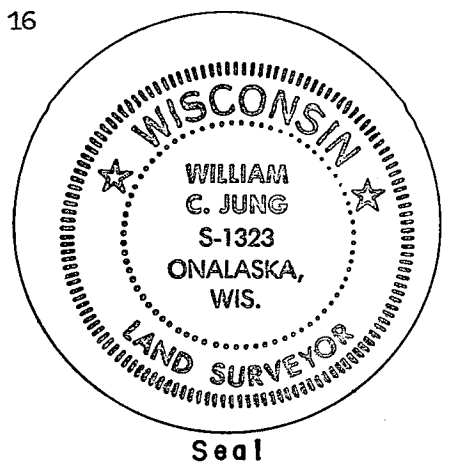


MAP SHOWING DISTANCE AND DIRECTION TO OTHER PUBLIC LAND SURVEY CORNERS USED FOR REESTABLISHING THE CORNER



I, William C. Jung, Deputy County Surveyor,  
 HEREBY CERTIFY THAT THE CORNER LOCATION SHOWN ON THIS RECORD  
 WAS DETERMINED BY ME OR UNDER MY DIRECTION AND CONTROL AND  
 THAT THIS U. S. PUBLIC LAND SURVEY MONUMENT RECORD IS CORRECT  
 AND COMPLETE TO THE BEST OF MY KNOWLEDGE AND BELIEF.

William C. Jung December 15, 1989  
 Signature Date



Seal