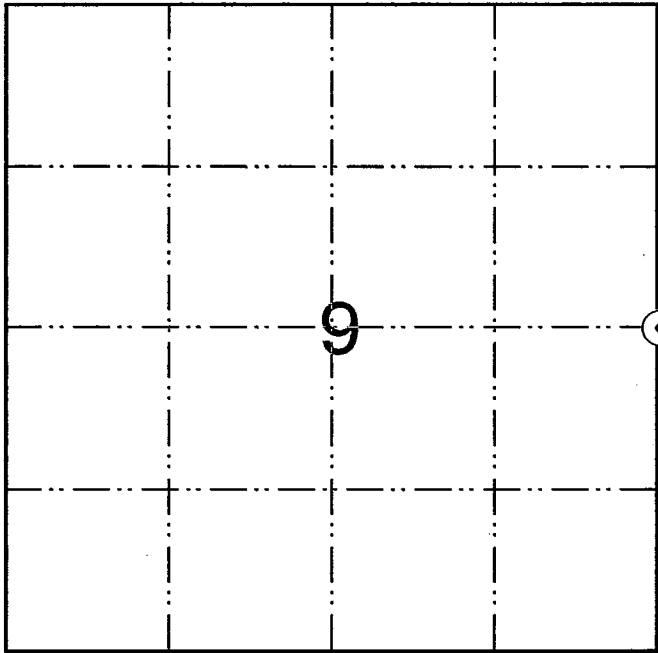


LA CROSSE COUNTY, WISCONSIN

U. S. PUBLIC LAND SURVEY MONUMENT RECORD

EAST ¼ CORNER, SECTION 9, T15N, R5W, TOWN OF WASHINGTON



WISCONSIN COORDINATE SYSTEM

NORTH: 654032.672
EAST: 1712171.898

TYPE OF MONUMENT: No monument set. Corner falls near the rocky bottom of a ravine. Set witness monuments 60.65' SW and 29.80' Northeast of the corner location as shown.

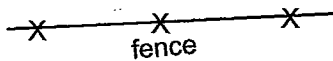
BEARINGS REFERENCED TO: Grid North

CREW: Bryan Meyer and Pete Follansbee
DATE: August 9, 2009

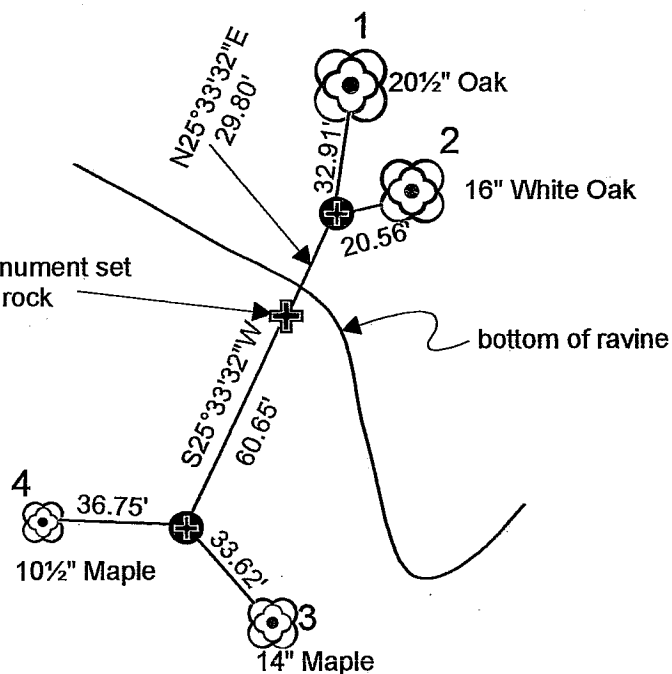
⊙ = LOCATION OF LANDMARK

PLAN VIEW OF REFERENCE TIES:

NO SCALE

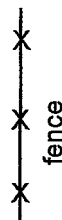


No monument set due to rock



NOTE: The four trees shown are double blazed.

⊕ = Set 3/4" x 30" round iron bar with aluminum cap

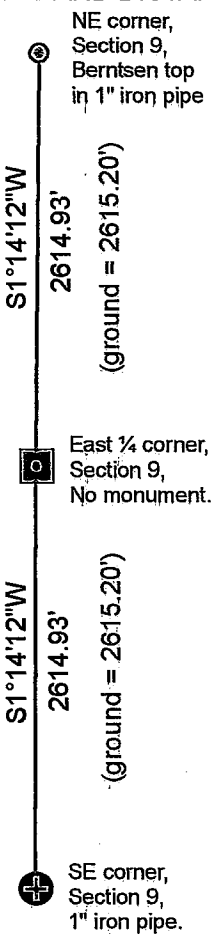


WITNESS TIES:

- 1 = Set nail and washer in SEly side of 20½" Oak
- 2 = Set nail and washer in NWly side of 16" White Oak
- 3 = Set nail and washer in Sly side of 14" Maple
- 4 = Set nail and washer in Sly side of 10½" Maple

NO SCALE

GRID BEARINGS AND DISTANCES



DESCRIBE ANY RECORD EVIDENCE, MONUMENT EVIDENCE, TESTIMONIAL EVIDENCE OR ANY OTHER MATERIAL EVIDENCE YOU CONSIDERED AND WHETHER THE MONUMENT WAS FOUND OR RESTORED THROUGH ACCEPTANCE OF AN OBLITERATED EVIDENCE LOCATION:

Set this corner on line and equidistant between the Northeast and Southeast corners of Section 9.

DESCRIBE OR SHOW ANY MATERIAL DISCREPANCY BETWEEN THE LOCATION OF THE RESTORED CORNER AND THAT OF THE CORNER PREVIOUSLY RESTORED OR REESTABLISHED

None.

CERTIFICATE:

I, Bryan H. Meyer, County Surveyor, hereby certify that the corner location shown on this record was determined by me or under my direction and control and that this U. S. Public Land Survey Monument Record is correct and complete to the best of my knowledge and belief.

Bryan H. Meyer
Bryan H. Meyer, County Surveyor

2/17/2010
Date

