

US PUBLIC LAND SURVEY MONUMENT RECORD- ADDENDUM

2020-7

TIE SHEET ADDENDUM-21505110020 (LA CROSSE COUNTY INDEX 56A)

SECTION 11 T. 15 N., R. 5 W.

TOWN OF WASHINGTON

LA CROSSE COUNTY, WI.

WISCONSIN COORDINATE SYSTEM

DATUM: SPC- WI SOUTH NAD83(91)

NORTH: 651,339.680'

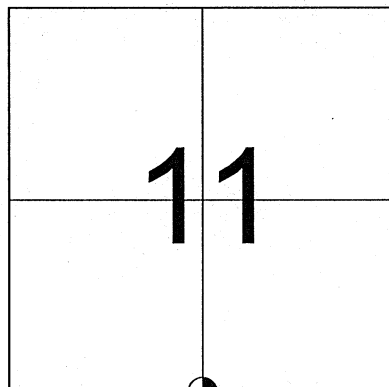
EAST: 1,720,022.548'

ELEVATION:

TYPE OF MONUMENT: 3/4" IRON BAR WITH ALUMINUM CAP

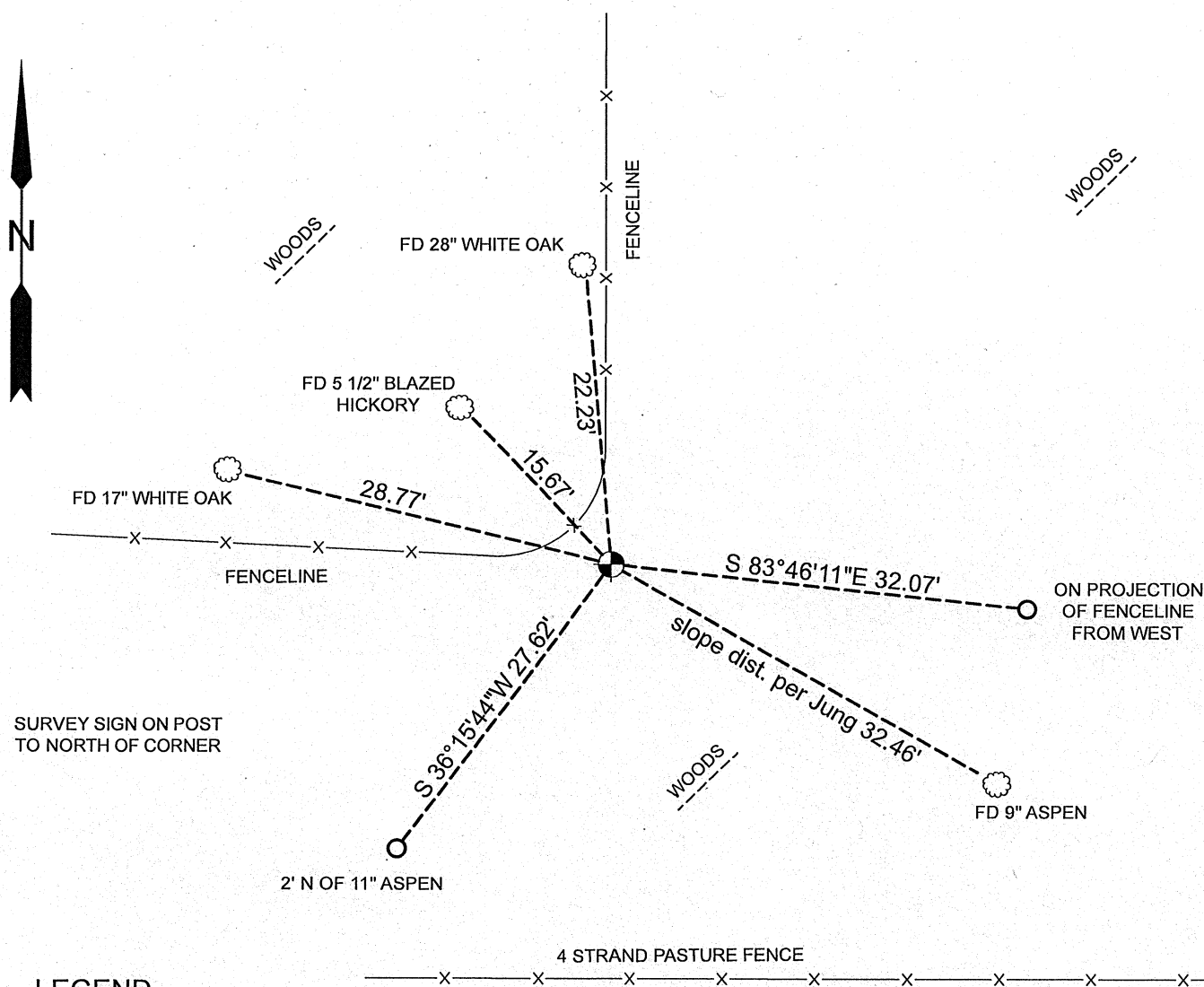
CREW: BRYAN MEYER, COREY HUGHES

DATE: MARCH 11, 2020



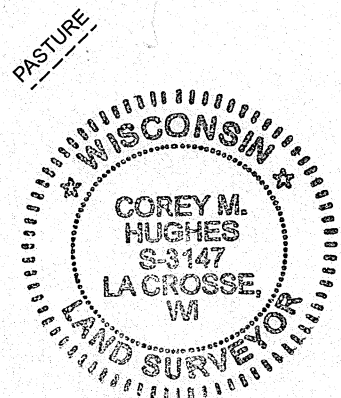
LOCATION OF LANDMARK

**March 11th, 2020-** Bryan Meyer and I performed maintenance on this corner and found the 3/4" Iron bar with aluminum cap, down 3" 2' south of fence corner post. I also found all of W. Jung's ties and established 2 new ties as shown below.



LEGEND

- FOUND 3/4" IRON BAR WITH ALUMINUM CAP
- FOUND TREE AS DESCRIBED
- SET 3/4"X18" IRON BAR (weighing 1.50lbs./ft.)



*Corey Hughes*  
 Corey M. Hughes

4-20-2020  
 Date

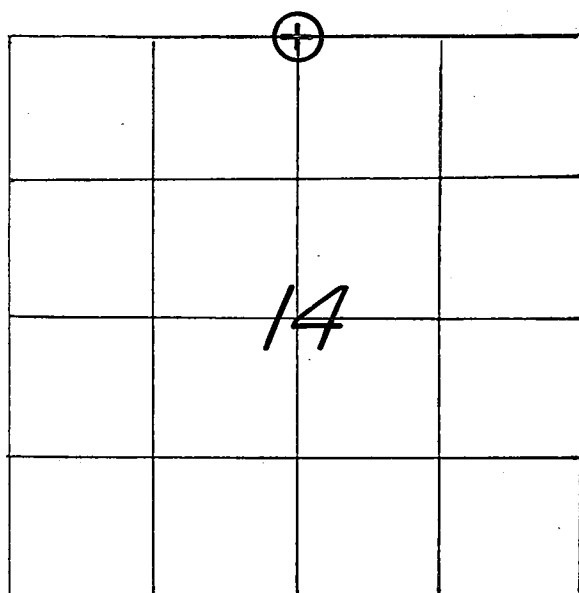
I, Corey M. Hughes, Hereby certify that the corner location shown on this record was determined by me or under my direction and control and that this U.S. Public Land Survey Monument Record Addendum is correct and complete to the best of my knowledge and belief.

CORNER ID:  
 21505110020

21505110020

## U. S. PUBLIC LAND SURVEY MONUMENT RECORD

SECTION 14 T 15 N, R 5 W, TOWN OF WASHINGTON  
LA CROSSE COUNTY



LOCATION OF LANDMARK

CREW: **WILLIAM C. JUNG**  
**PETER F. FOLLANSBEE**  
DATE: **1/09/2003**

## WISCONSIN COORDINATE SYSTEM

North

East

Theta Angle

Horiz. Order

Vert. Order

## TYPE OF LANDMARK

**3/4"x30" IRON BAR WITH ALUMINUM CAP.**

BEARINGS ARE REFERENCED TO

Describe any record evidence, monument evidence, testimonial evidence or any other material evidence you considered and whether the monument was found or restored through acceptance of an obliterated evidence location.

Chris Fechner set a nail at the occupied corner when he was surveying out Section 14. He accepted the old occupied corner as the best available evidence of the original government corner position. After analyzing his section measurements, I agree with his conclusion. I removed his nail and replaced it with a 3/4"x30" iron bar with a cap.

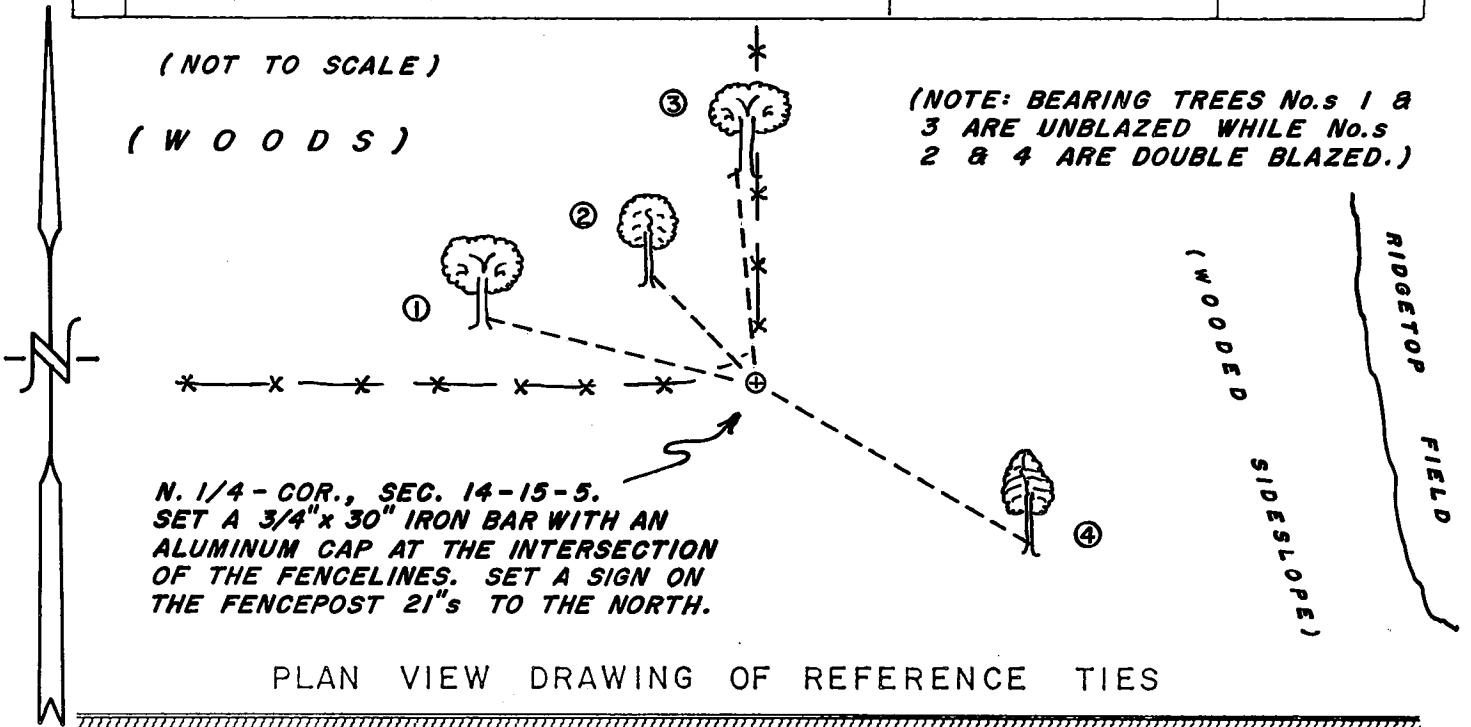
Describe or show any material discrepancy between the location of the restored corner and that of the corner previously restored or reestablished.

**NONE KNOWN.**

RECORD OF DURABLE WITNESS MONUMENTS

MAGNETIC

NO	DESCRIPTION	BEARING	DISTANCE
1	SET A NAIL IN N.E.-SIDE OF A 15-1/2" WHITE OAK	N 76° W	28.77 FT.
2	SET A NAIL IN N.E.-SIDE OF A 4" HICKORY	N 43° W	15.67 FT.
3	SET A NAIL IN W.-SIDE OF A 27" WHITE OAK	N 05° W	22.23 FT.
4	SET A NAIL IN N.E.-SIDE OF A 5-1/2" ASPEN	S 60° E	SLOPE=32.46'

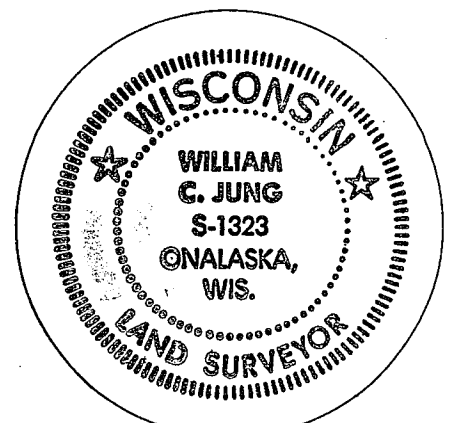


MAP SHOWING DISTANCE AND DIRECTION TO OTHER PUBLIC LAND SURVEY CORNERS USED FOR REESTABLISHING THE CORNER

I made no section measurements at this time. The location of this corner was confirmed by Fechner's measurements.

I, WILLIAM C. JUNG, COUNTY SURVEYOR  
 HEREBY CERTIFY THAT THE CORNER LOCATION SHOWN ON THIS RECORD WAS DETERMINED BY ME OR UNDER MY DIRECTION AND CONTROL AND THAT THIS U. S. PUBLIC LAND SURVEY MONUMENT RECORD IS CORRECT AND COMPLETE TO THE BEST OF MY KNOWLEDGE AND BELIEF.

William C. Jung                      1/20/03  
 Signature                                      Date



Seal