

US PUBLIC LAND SURVEY MONUMENT RECORD- ADDENDUM
 TIE SHEET ADDENDUM-21505112000 (LA CROSSE COUNTY INDEX 50A)

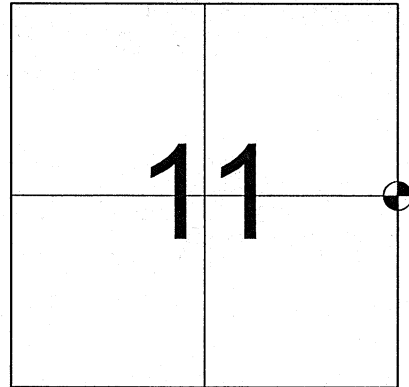
2020-8

SECTION 11 T. 15 N., R. 5 W.
 LA CROSSE COUNTY, WI.

TOWN OF WASHINGTON

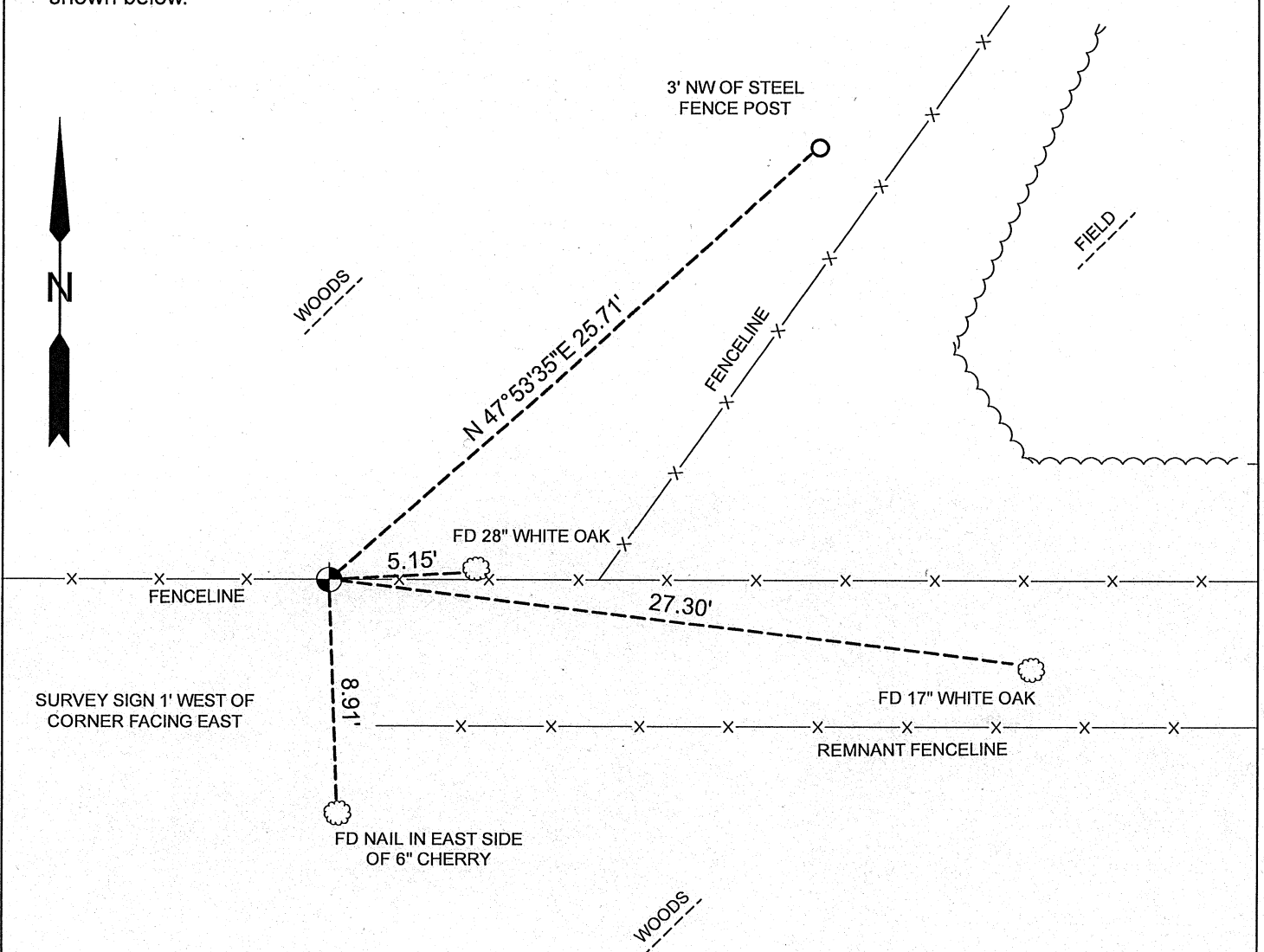
WISCONSIN COORDINATE SYSTEM

DATUM: SPC- WI SOUTH NAD83(91)
 NORTH: 653,858.206'
 EAST: 1,722,734.506'
 ELEVATION:
 TYPE OF MONUMENT: 3/4" IRON BAR WITH ALUMINUM CAP
 CREW: BRYAN MEYER, COREY HUGHES
 DATE: MARCH 11, 2020






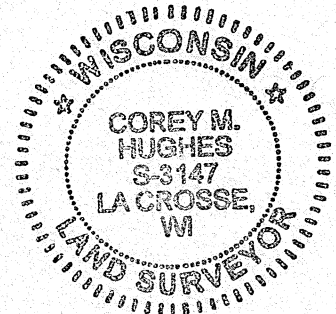
LOCATION OF LANDMARK

March 11th, 2020- Bryan Meyer and I performed maintenance on this corner and found the 3/4" Iron bar with aluminum cap under fenceline at the corner. I also found 3 of C. Fechner's ties and established 1 new tie as shown below.



LEGEND

-  FOUND 3/4" IRON BAR WITH ALUMINUM CAP
-  FOUND TREE AS DESCRIBED
-  SET 3/4"X18" IRON BAR
(weighing 1.50lbs./ft.)



Corey Hughes
 Corey M. Hughes

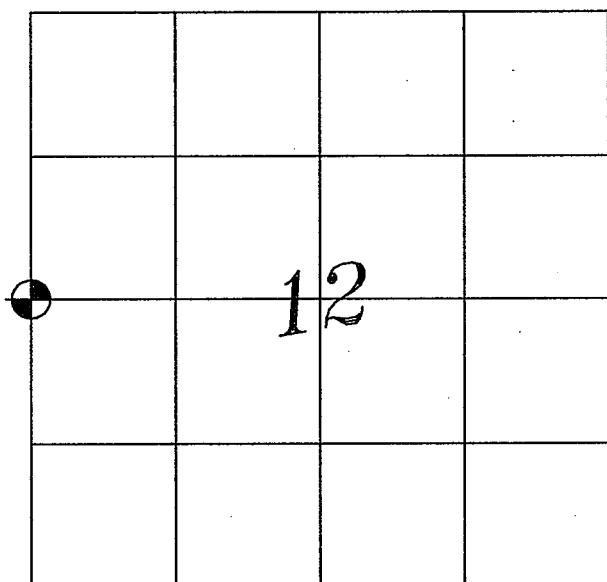
4-21-2020
 Date

I, Corey M. Hughes, Hereby certify that the corner location shown on this record was determined by me or under my direction and control and that this U.S. Public Land Survey Monument Record Addendum is correct and complete to the best of my knowledge and belief.

CORNER ID:
 21505112000

U. S. PUBLIC LAND SURVEY MONUMENT RECORD

SECTION 12 T 15 N, R 5 W, TOWN OF WASHINGTON
LACROSSE COUNTY



LOCATION OF LANDMARK

CREW: Chris Fechner
 Randy Corlis

DATE: 4/26/05

Describe any record evidence, monument evidence, testimonial evidence, or any other material evidence you considered and whether the monument was found or restored through acceptance of an obliterated evidence location.

- We found a strong East – West fenceline and a diagonal fenceline that terminates very near the calculated corner. The area was searched for original B.T.'s and any unrecorded stones. We found nothing except ancient fenceline and piles of old fence posts near the corner location.

Describe or show any material discrepancy between the location of the restored corner and that of the corner previously restored or reestablished.

I set the corner 10.63' South of the Midpoint distance in an existing fenceline. The corner is 37 feet East of the straight line distance.

WISCONSIN COORDINATE SYSTEM

North

East

Theta Angle

Horiz. Order

Vert. Order

TYPE OF LANDMARK

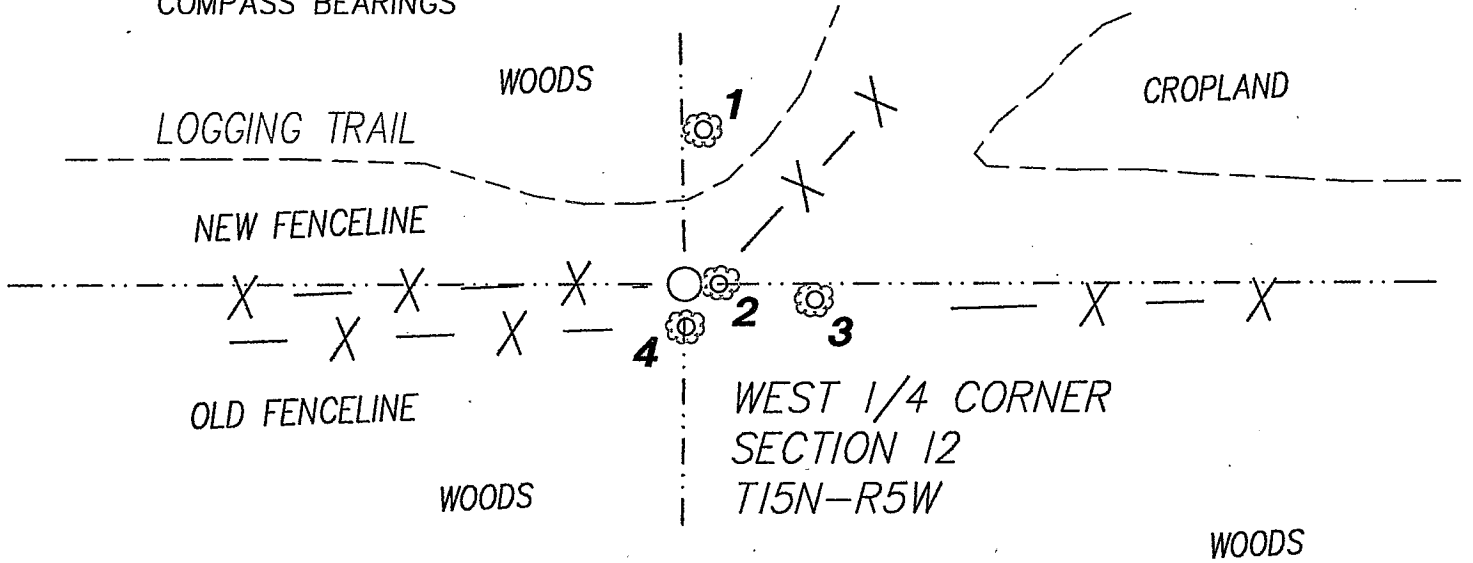
3/4" x 30" Iron Bar

BEARINGS ARE REFERENCED TO
 LACROSSE COUNTY
 COORDINATE SYSTEM

RECORD OF DURABLE WITNESS MONUMENTS

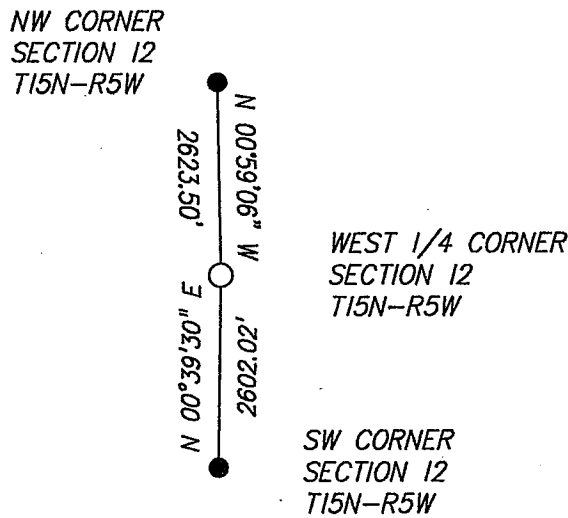
NO	DESCRIPTION	BEARING	DISTANCE
1	SET CUT NAIL IN THE BASE OF A 12" BIRCH	N 7° E	32.3'
2	SET CUT NAIL IN THE BASE OF A 12" BURR OAK	N 87° E	5.15'
3	SET MAG NAIL IN THE BASE OF A 4" CHERRY	S 83° E	27.3'
4	SET CUT NAIL IN THE BASE OF A 5" CHERRY	S 2° E	8.91'

COMPASS BEARINGS



PLAN VIEW DRAWING OF REFERENCE TIES

MAP SHOWING DISTANCE AND DIRECTION TO OTHER PUBLIC LAND SURVEY CORNERS USED FOR REESTABLISHING THE CORNER



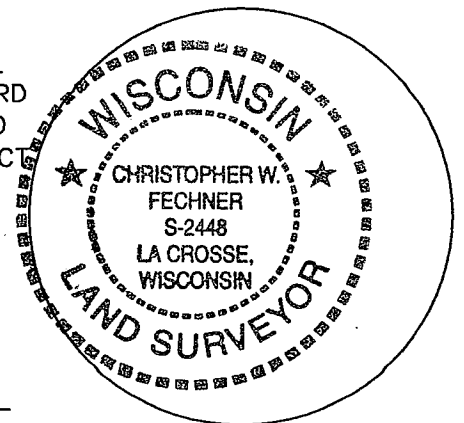
I, Christopher Wm. Fechner, RLS 2448
 HEREBY CERTIFY THAT THE CORNER LOCATION SHOWN ON THIS RECORD
 WAS DETERMINED BY ME OR UNDER MY DIRECTION AND CONTROL AND
 THAT THIS U. S. PUBLIC LAND SURVEY MONUMENT RECORD IS CORRECT
 AND COMPLETE TO THE BEST OF MY KNOWLEDGE AND BELIEF.

Christopher Wm Fechner

4/26/05

Signature

Date



Seal