

CERTIFICATE

CERTIFIED LAND CORNER

NE-Cor., 13-15-5.

No. 53

I, Bryan H. Meyer, do hereby certify that on the 31st day of October 1997, I found ~~evidence~~ (no evidence) of the Northwest corner of Section 18, T 15 N, R 4 W Fourth Principal Meridian, and I re-established said corner according to the Wisconsin Statutes as shown and described hereon.

Dated this 21st day of Jan. 1998.

Bryan H. Meyer

Deputy County Surveyor

Title

History of corner establishment since Original Government Survey

No recorded history was found in Monroe or LaCrosse County Surveyor files.

Description of corner evidence found:

I re-established this corner on line and one-third of the way between the West 1/4 corner of Section 7, T15N, R4W, and the Northwest corner of Section 19, T15N, R4W. I found fences in this area, but they appear to be somewhat "wild".

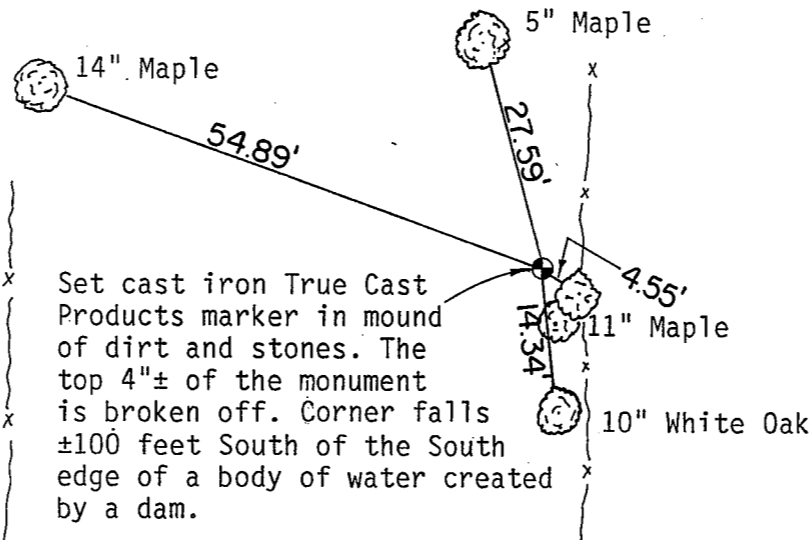
Description of corner and witness monuments, references and accessories used to perpetuate the original or re-established location of this corner:

Crew: Meyer, Malliet
 Date: October 31, 1997 - 9:20 a. m.
 Weather: Partly Cloudy, 45°±
 Witnesses to corner location:

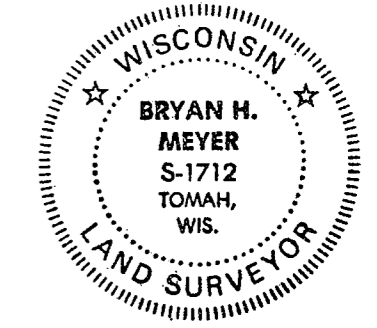
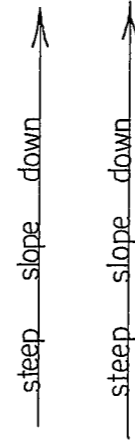
Bryan H. Meyer

Douglas Malliet

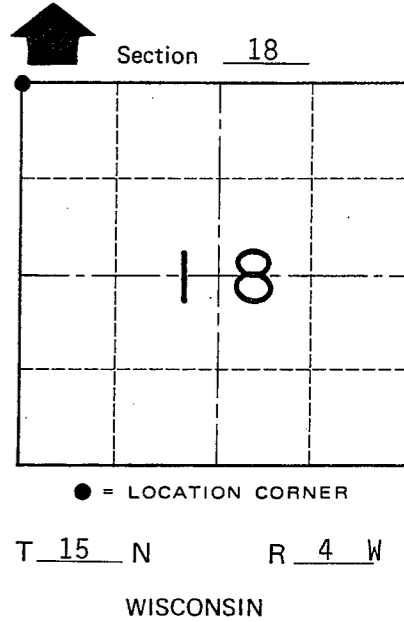
NOTE: Set sign 2'± Northeast of corner marker.



Set cast iron True Cast Products marker in mound of dirt and stones. The top 4"± of the monument is broken off. Corner falls ±100 feet South of the South edge of a body of water created by a dam.



Bryan H. Meyer
 H. A. Sime and Associates
 P. O. Box 50
 Tomah, Wisconsin 54660
 Phone: (608)-372-5392



SURVEY CONTROL ORDER

Horizontal	_____
Vertical	_____

Corner	East (X)	North (Y)	Elevation (Z)	Zone
Control Sta. Name				

NOTE: The four trees shown are double blazed with the blazes facing the corner. The distance to each tree is to a nail set in a hack in the side of each tree.

WISCONSIN COORDINATE SYSTEM

~~City, Village or~~ Town of Portland

County of Monroe