

US PUBLIC LAND SURVEY MONUMENT RECORD-ADDENDUM
TIE SHEET ADDENDUM-21505122000 (LA CROSSE COUNTY INDEX 54A)

2020-9

SECTION 12 T. 15 N., R. 5 W. TOWN OF WASHINGTON
LA CROSSE COUNTY, WI.

WISCONSIN COORDINATE SYSTEM

DATUM: SPC- WI SOUTH NAD83(91)

NORTH: 653,885.675'

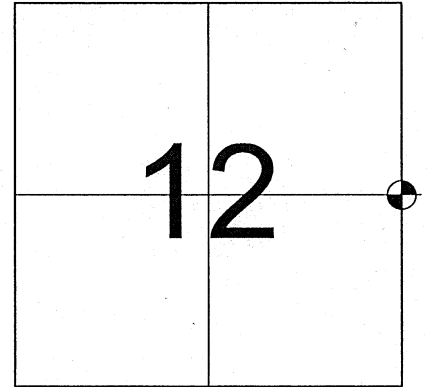
EAST: 1,727,924.316'

ELEVATION:

TYPE OF MONUMENT: HARRISON MARKER

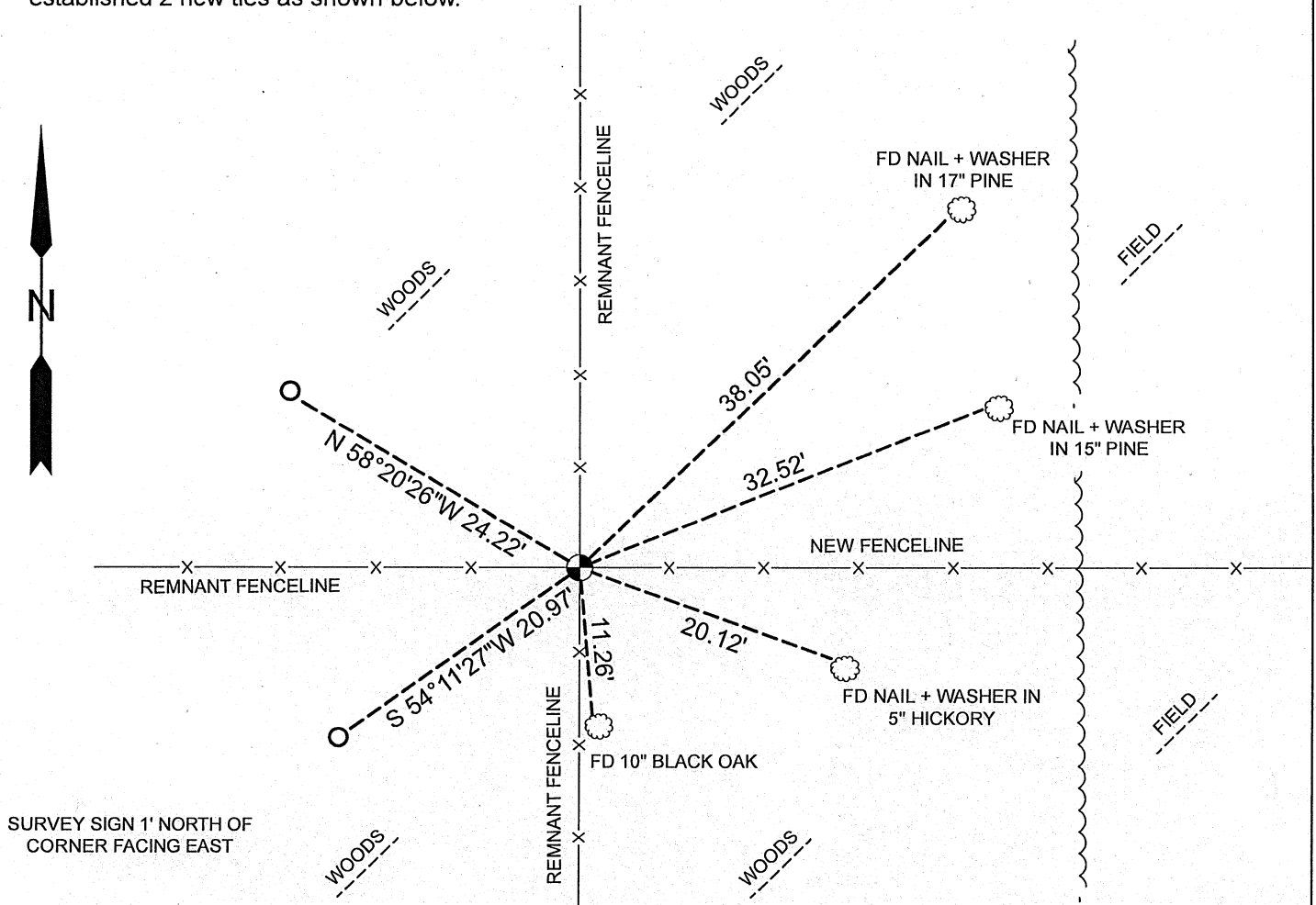
CREW: BRYAN MEYER, COREY HUGHES

DATE: MARCH 11, 2020



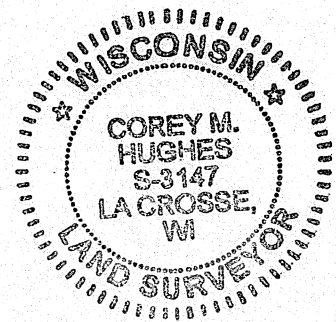
LOCATION OF LANDMARK

March 11th, 2020- Bryan Meyer and I performed maintenance on this corner and found the Harrison marker at the corner 2' east of a railroad tie corner post. I also found 3 of G. Dechant's nails but did find all 4 trees, I established 2 new ties as shown below.



LEGEND

- FOUND HARRISON MARKER
- FOUND TREE AS DESCRIBED
- SET 3/4"X18" IRON BAR
(weighing 1.50lbs./ft.)



Corey Hughes
Corey M. Hughes

4-21-2020
Date

I, Corey M. Hughes, Hereby certify that the corner location shown on this record was determined by me or under my direction and control and that this U.S. Public Land Survey Monument Record Addendum is correct and complete to the best of my knowledge and belief.

CORNER ID:
21505122000

I, Gary L. Dechant, do hereby certify that on the 19th day of November 19 86, I found (evidence) of the corner of Section 7, T 15 N, R 4W Fourth Principal Meridian, and I re-established said corner according to the Wisconsin Statutes as shown and described hereon.

Dated this 17th day of Dec. 19 86.

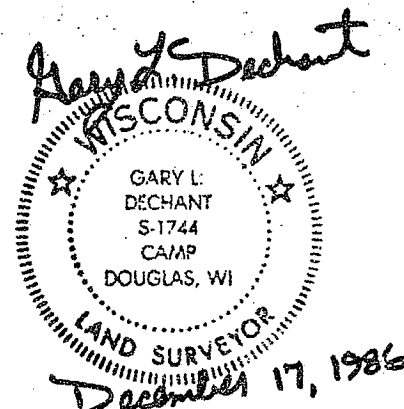
Gary L. Dechant Registered Land Surveyor, 1744 Title

History of corner establishment since Original Government Survey

No known recorded history since the original government survey.

Description of corner evidence found:

Accepted 4-way fence corner as best available evidence. My "Rookie Assistant" has this Harrison facing west.



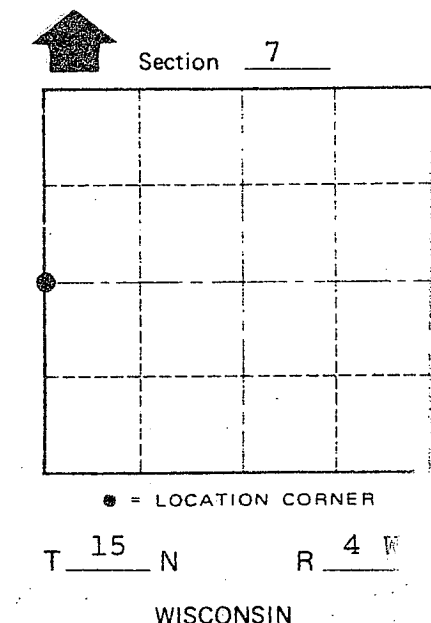
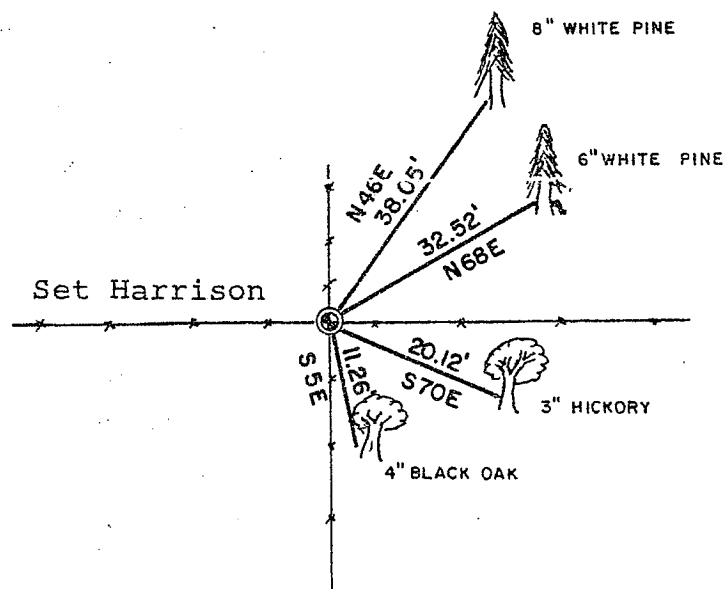
Description of corner and witness monuments, references and accessories used to perpetuate the original or re-established location of this corner:

Cloudy, Gusting Winds

Witnesses to corner location:

David E. Madison (rookie)

Gary L. Dechant



(Trees double blazed with N&C's set)

SURVEY CONTROL ORDER

Table with 2 rows: Horizontal, Vertical.

WISCONSIN COORDINATE SYSTEM

Table with 5 columns: Corner, East (X), North (Y), Elevation (Z), Zone.

Portland Town, Monroe County, Wisconsin

NO. 52 21505122000

COUNTY SURVEYOR FORM NO. 1