

CERTIFICATE

CERTIFIED LAND CORNER

NE-Cor., 24-15-5.

#79

No. 73

21505130000

NO. 79

21505130000

I, Bryan H. Meyer, do hereby certify that on the 30th day of October 1997, I found (evidence) ~~(no evidence)~~ of the Northwest corner of Section 19, T 15 N, R 4 W Fourth Principal Meridian, and I re-established said corner according to the Wisconsin Statutes as shown and described hereon.

Dated this 27th day of Feb. 1998.

Bryan H. Meyer

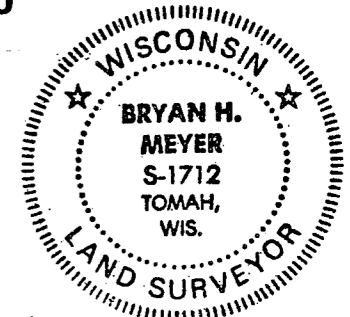
Deputy County Surveyor
Title

History of corner establishment since Original Government Survey

Fred A. Holden, County Surveyor for Monroe County was at this corner in April of 1905 while doing work in Section 19. No recorded history for this corner was found in the LaCrosse County records.

Description of corner evidence found:

I accepted the two-way fence corner as the best available evidence. This corner location fits very well along the township line.



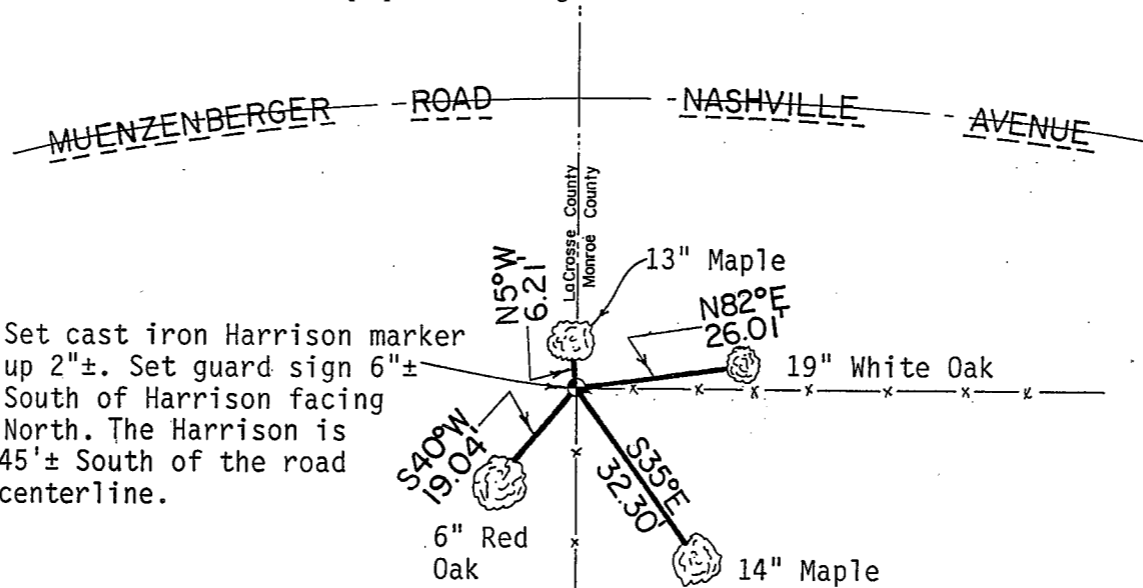
Bryan H. Meyer
H. A. Sime and Associates
P. O. Box 50
Tomah, Wisconsin 54660
Phone: (608)-372-5392

Description of corner and witness monuments, references and accessories used to perpetuate the original or re-established location of this corner:

Crew: Meyer, Malliet
Date: October 30, 1997 - 9:00 a. m.
Weather: Partly Cloudy, 45°±
Witnesses to corner location:

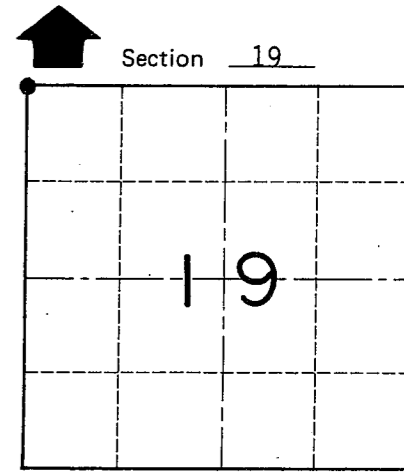
Bryan H. Meyer

Douglas Malliet



Set cast iron Harrison marker up 2"±. Set guard sign 6"± South of Harrison facing North. The Harrison is 45'± South of the road centerline.

The bearings shown on this sheet are magnetic hand compass bearings.



● = LOCATION CORNER
T 15 N R 4 W
WISCONSIN

SURVEY CONTROL ORDER

Horizontal	_____
Vertical	_____

The four trees shown are double blazed; the distance to each tree is to a nail set in a hack in the side of each tree.

WISCONSIN COORDINATE SYSTEM

Corner	East (X)	North (Y)	Elevation (Z)	Zone
Control Sta. Name				

~~City, Village or~~ Town of Portland
County of Monroe

COUNTY SURVEYOR FORM NO. 1