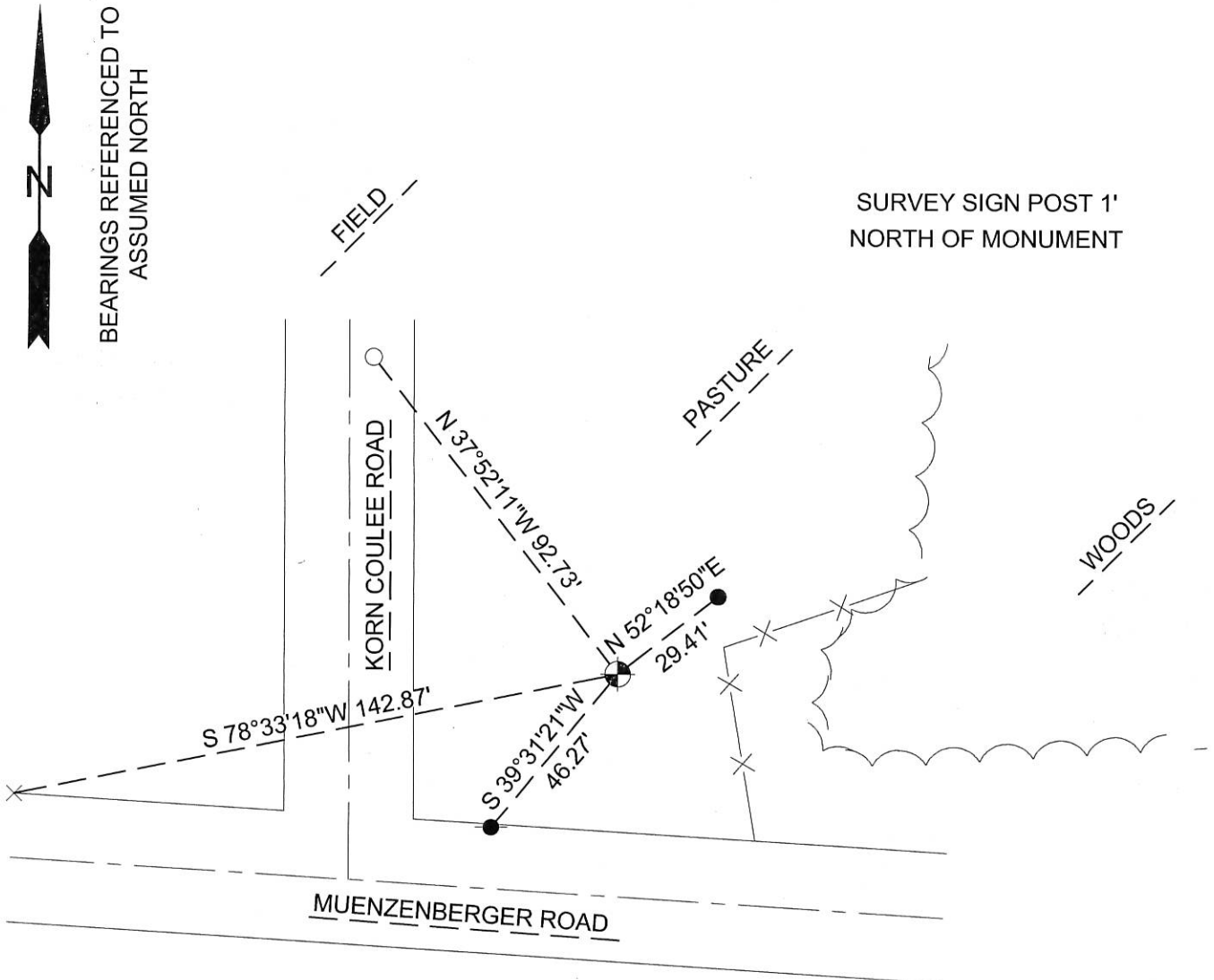


MAINTENANCE- U.S PUBLIC LAND SURVEY MONUMENT RECORD

TIE SHEET UPDATE-21505130020 (LA CROSSE COUNTY INDEX 080A)

I performed maintenance work for this corner on September 8, 2009. I found a 3/4" Iron Bar set by C. Fehner and (3) ties in good condition, I Set a La Crosse County Aluminum Cap on Found 3/4" Iron Bar, and I found a 3/4" iron bar to the NW set by C. Fehner bent over I reset a new 3/4" Iron Rebar in the same location as shown.



LEGEND

- ⊕ SET LA CROSSE COUNTY ALUMINUM CAP ON FOUND 3/4" IRON BAR
- SET 3/4"x24" IRON REBAR (WEIGHING 1.50LBS/FT)
- FOUND 3/4" IRON BAR
- FOUND NAIL IN POWER POLE
- × FOUND "X" ON BRIDGE

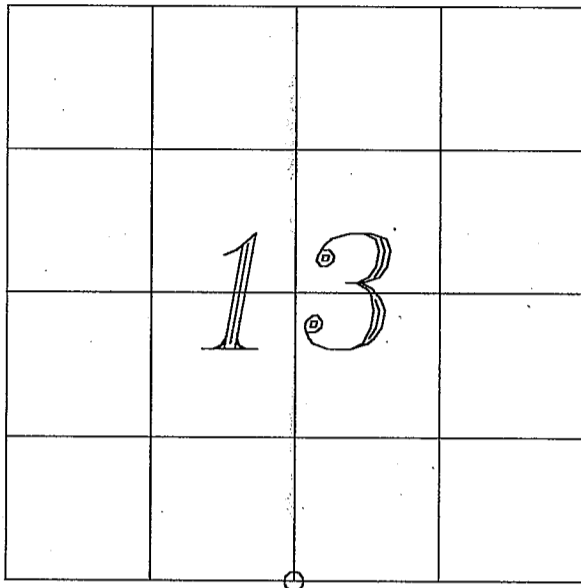
Bryan Meyer
 Bryan Meyer
 La Crosse County Surveyor

9/25/2009
 Date



U. S. PUBLIC LAND SURVEY MONUMENT RECORD

SECTION 13 T 15 N, R 5 W, TOWN OF WASHINGTON
LA CROSSE COUNTY



LOCATION OF LANDMARK

CREW: CHRIS FECHNER
 JOSH NAVE

DATE: 8/23/01

Describe any record evidence, monument evidence, testimonial evidence, or any other material evidence you considered and whether the monument was found or restored through acceptance of an obliterated evidence location.

I SET THIS CORNER BY LAW AT THE MIDPOINT BETWEEN THE SE & SW CORNERS OF SECTION 13. THE LOCATION FITS THE GOVERNMENT NOTES LOCATIVE CALLS FOR THE CREEK AND THE HILLSIDE. FENCE LINE OCCUPATION TO THE NORTH MATCHES THE EAST-WEST LOCATION VERY WELL.

Describe or show any material discrepancy between the location of the restored corner and that of the corner previously restored or reestablished.

NONE KNOWN

WISCONSIN COORDINATE SYSTEM

North

East

Theta Angle

Horiz. Order

Vert. Order

TYPE OF LANDMARK

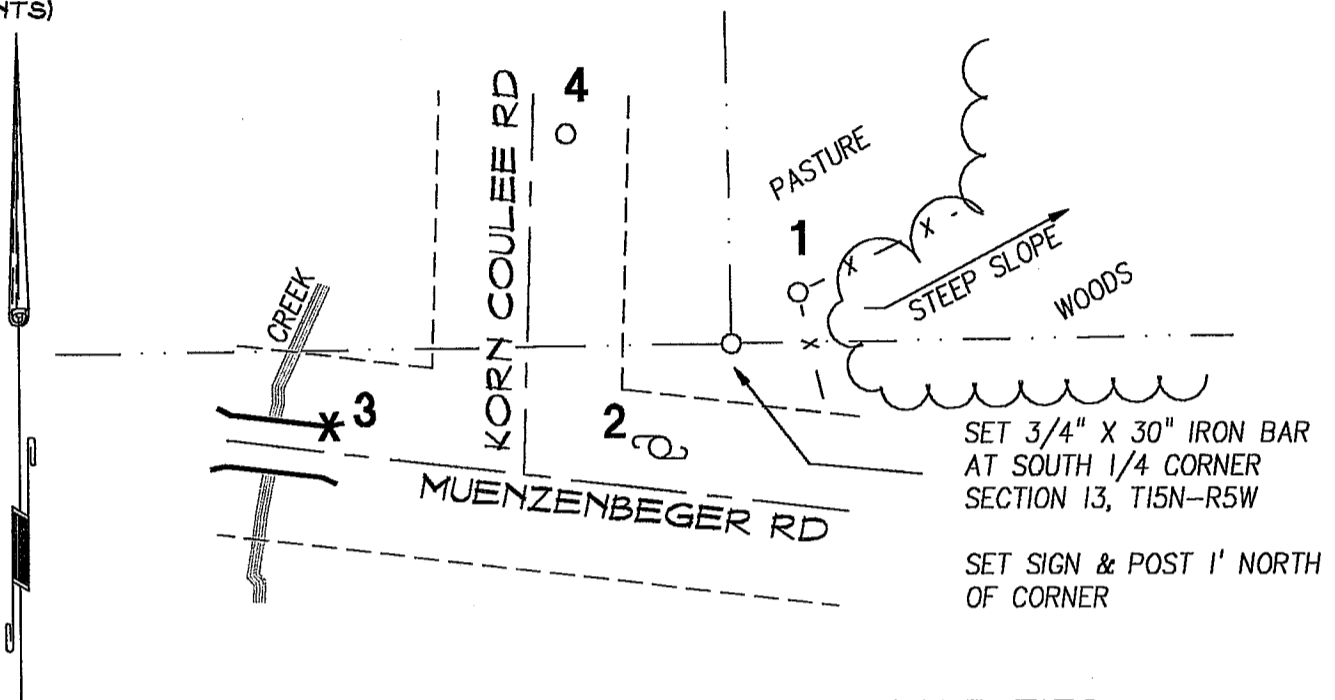
3/4" X 30" IRON BAR

BEARINGS ARE REFERENCED TO
 LA CROSSE COUNTY COORDINATE SYSTEM

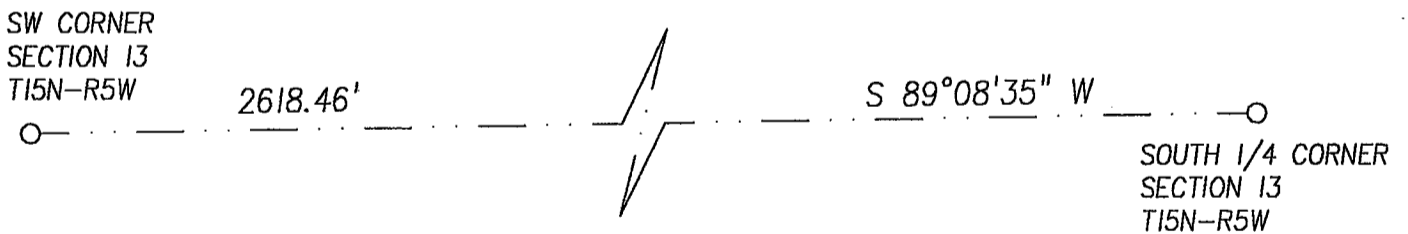
RECORD OF DURABLE WITNESS MONUMENTS

NO	DESCRIPTION	BEARING	DISTANCE
1	SET 3/4" X 30" IRON BAR	N 52°18'50" E	29.41'
2	SET 20P NAIL IN UTILITY POLE	7/8 S 39°31'21" W	46.27'
3	FOUND CHISELED "X" AT NE CORNER OF BRIDGE	S 78°33'18" W	142.87'
4	SET 3/4" X 30" IRON BAR	N 37°52'11" W	92.71'

(NTS)



MAP SHOWING DISTANCE AND DIRECTION TO OTHER PUBLIC LAND SURVEY CORNERS USED FOR REESTABLISHING THE CORNER



I, CHRISTOPHER W. FECHNER
 HEREBY CERTIFY THAT THE CORNER LOCATION SHOWN ON THIS RECORD WAS DETERMINED BY ME OR UNDER MY DIRECTION AND CONTROL AND THAT THIS U. S. PUBLIC LAND SURVEY MONUMENT RECORD IS CORRECT AND COMPLETE TO THE BEST OF MY KNOWLEDGE AND BELIEF.



Christopher W. Fechner 8/24/01
 Signature Date

Seal