

NO. 78

21505132000

CERTIFICATE

CERTIFIED LAND CORNER

E. 1/4-Cor., 13-15-5.

No. 54

I, Bryan H. Meyer, do hereby certify that on the thirty-first day of October 1997, I found ~~(no evidence)~~ (no evidence) of the West Quarter corner of Section 18, T 15 N, R 4 W Fourth Principal Meridian, and I re-established said corner according to the Wisconsin Statutes as shown and described hereon.

Dated this 19th day of Jan. 1998.

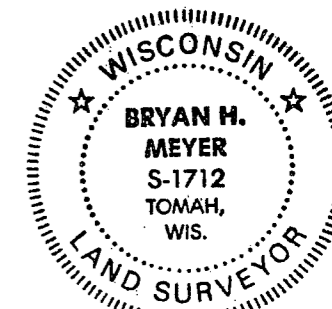
Bryan H. Meyer
Deputy County Surveyor
Registered Land Surveyor #1712
Title

History of corner establishment since Original Government Survey

No recorded history in either Monroe or LaCrosse County records.

Description of corner evidence found:

I re-established this corner on line and equi-distant between the Northwest and Southwest corner of Section 18, as per law.



Bryan H. Meyer
H. A. Sime and Associates
P. O. Box 50
Tomah, Wisconsin 54660
Phone: (608)-372-5392

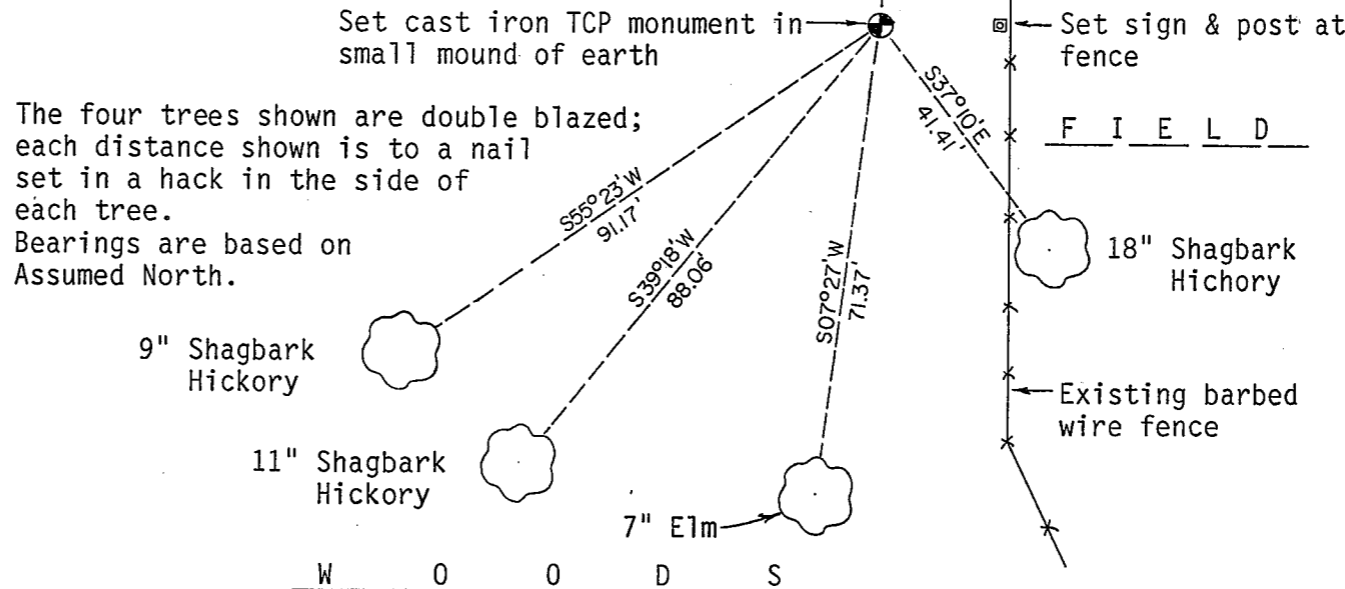
Description of corner and witness monuments, references and accessories used to perpetuate the original or re-established location of this corner:

Crew: Meyer, Malliet
Date: October 31, 1997 - 11:45 a. m.
Weather: Partly Sunny, Breezy, 55°±
Witnesses to corner location:

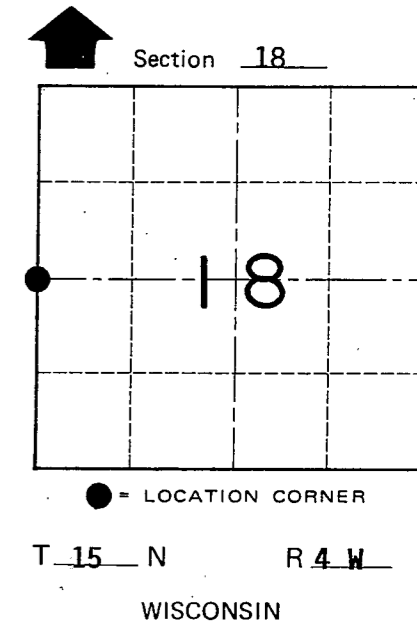
Bryan H. Meyer

Douglas J. Malliet

P A S T U R E



The four trees shown are double blazed; each distance shown is to a nail set in a hack in the side of each tree. Bearings are based on Assumed North.



SURVEY CONTROL ORDER

Table with 2 columns: Control Type (Horizontal, Vertical) and Status (checkboxes).

Table with 5 columns: Corner, East (X), North (Y), Elevation (Z), Zone. Includes a 'Control Sta. Name' row.

City, Village or Town PORTLAND
County of MONROE

COUNTY SURVEYOR FORM NO. 1