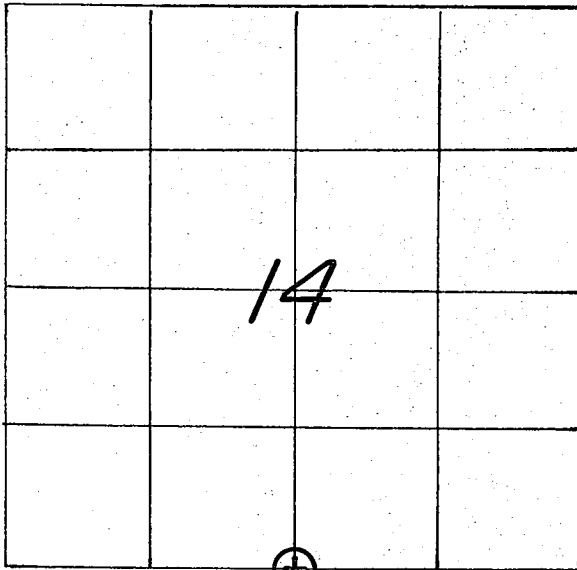


21505140020

U. S. PUBLIC LAND SURVEY MONUMENT RECORD

SECTION 14 T 15 N, R 5 W, TOWN OF WASHINGTON

LA CROSSE COUNTY



LOCATION OF LANDMARK

CREW: WILLIAM C. JUNG
 PETER F. FOLLANSBEE
 DATE: 6/08/2004

WISCONSIN COORDINATE SYSTEM	
North	646,048.356
East	1,720,029.086
Theta Angle	
Horiz. Order	
Vert. Order	
DATUM:	1983('91)
TYPE OF LANDMARK	
3/4" x 30" IRON BAR WITH AN ALUMINUM CAP.	
BEARINGS ARE REFERENCED TO	
GRID NORTH AS PER SECTION DATA.	

Describe any record evidence, monument evidence, testimonial evidence or any other material evidence you considered and whether the monument was found or restored through acceptance of an obliterated evidence location.

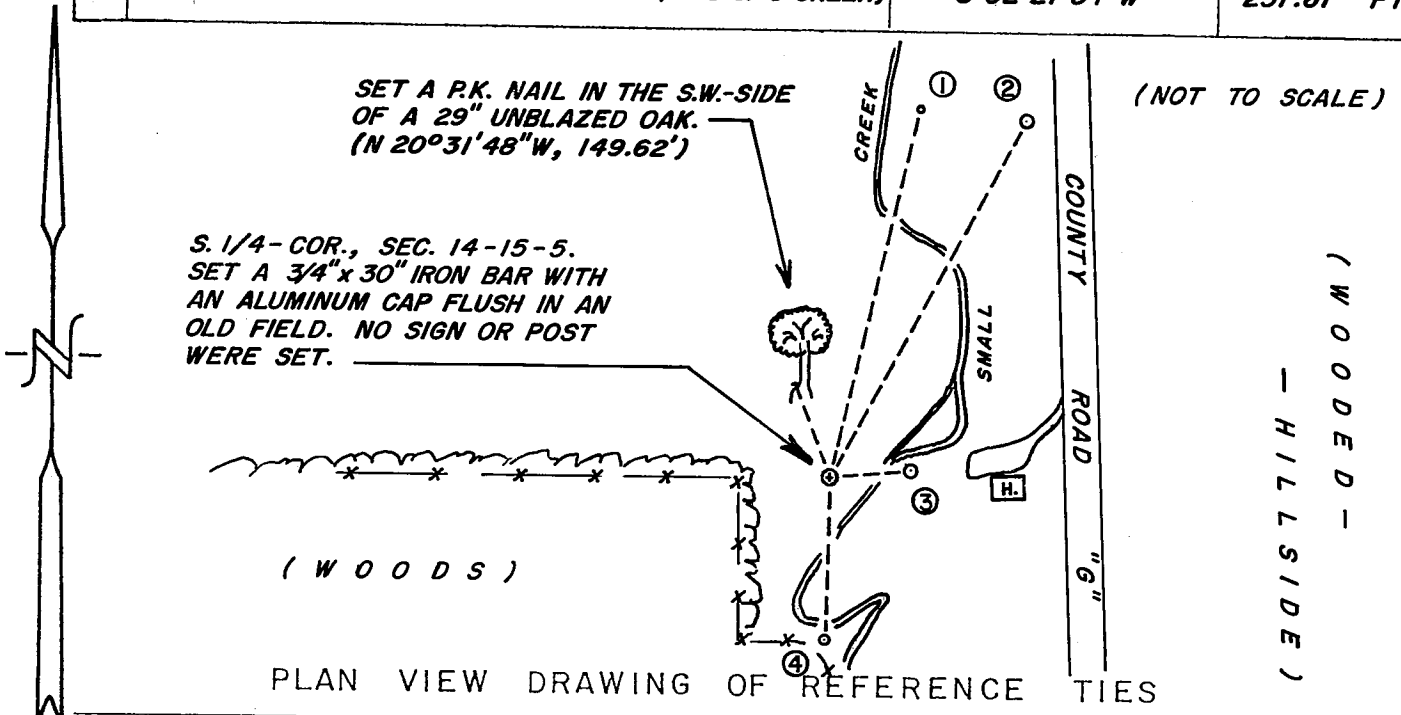
I set this corner on line with the occupied line to the West and at equal distances from the SW and SE section corners of Section 14. This also fits the East-West fence at the S1/16SW corner too. After inspecting and surveying along the South line of Section 14, I feel that this best retraces the old section line as previously surveyed. I set an iron bar and cap at the corner.

Describe or show any material discrepancy between the location of the restored corner and that of the corner previously restored or reestablished.

NONE KNOWN.

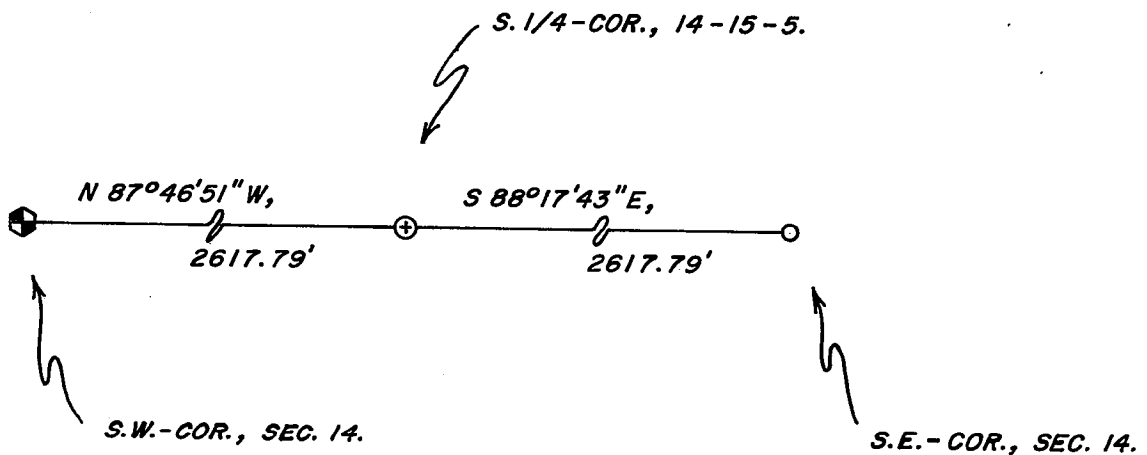
RECORD OF DURABLE WITNESS MONUMENTS

NO	DESCRIPTION	GRID BEARINGS	GROUND DIST.'s
		BEARING	DISTANCE
1	SET A 12" SPIKE BY A KNOCKED OUT 1-3/4" IRON PIPE	N 13°17'33"E	594.64 FT.
2	EXISTING 1-3/4" IRON PIPE	N 28°25'19"E	638.96 FT.
3	EXISTING 1-3/4" IRON PIPE	N 84°52'17"E	127.77 FT.
4	SET A 1-1/4" x 23-1/2" I.P. AT FENCE INTERS'N. (16' S. OF 6' CREEK)	S 02°27'34"W	251.61 FT.



MAP SHOWING DISTANCE AND DIRECTION TO OTHER PUBLIC LAND SURVEY CORNERS USED FOR REESTABLISHING THE CORNER

(GRID BEARINGS AND DISTANCES)
 (GRID FACTOR: 0.999898)
 (NOT TO SCALE)



I, WILLIAM C. JUNG, COUNTY SURVEYOR
 HEREBY CERTIFY THAT THE CORNER LOCATION SHOWN ON THIS RECORD WAS DETERMINED BY ME OR UNDER MY DIRECTION AND CONTROL AND THAT THIS U. S. PUBLIC LAND SURVEY MONUMENT RECORD IS CORRECT AND COMPLETE TO THE BEST OF MY KNOWLEDGE AND BELIEF.

William C. Jung 1/7/05
 Signature Date

