

US PUBLIC LAND SURVEY MONUMENT RECORD- ADDENDUM  
TIE SHEET ADDENDUM-21505142000 (LA CROSSE COUNTY INDEX 76A)

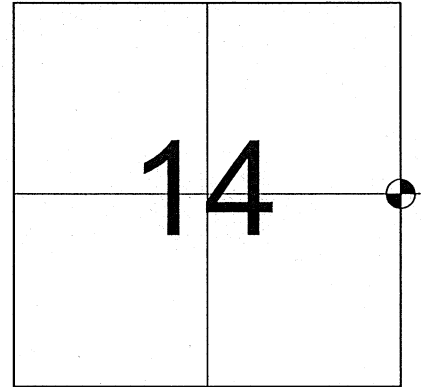
2020-48

SECTION 14 T. 15 N., R. 5 W.  
LA CROSSE COUNTY, WI.

TOWN OF WASHINGTON

WISCONSIN COORDINATE SYSTEM

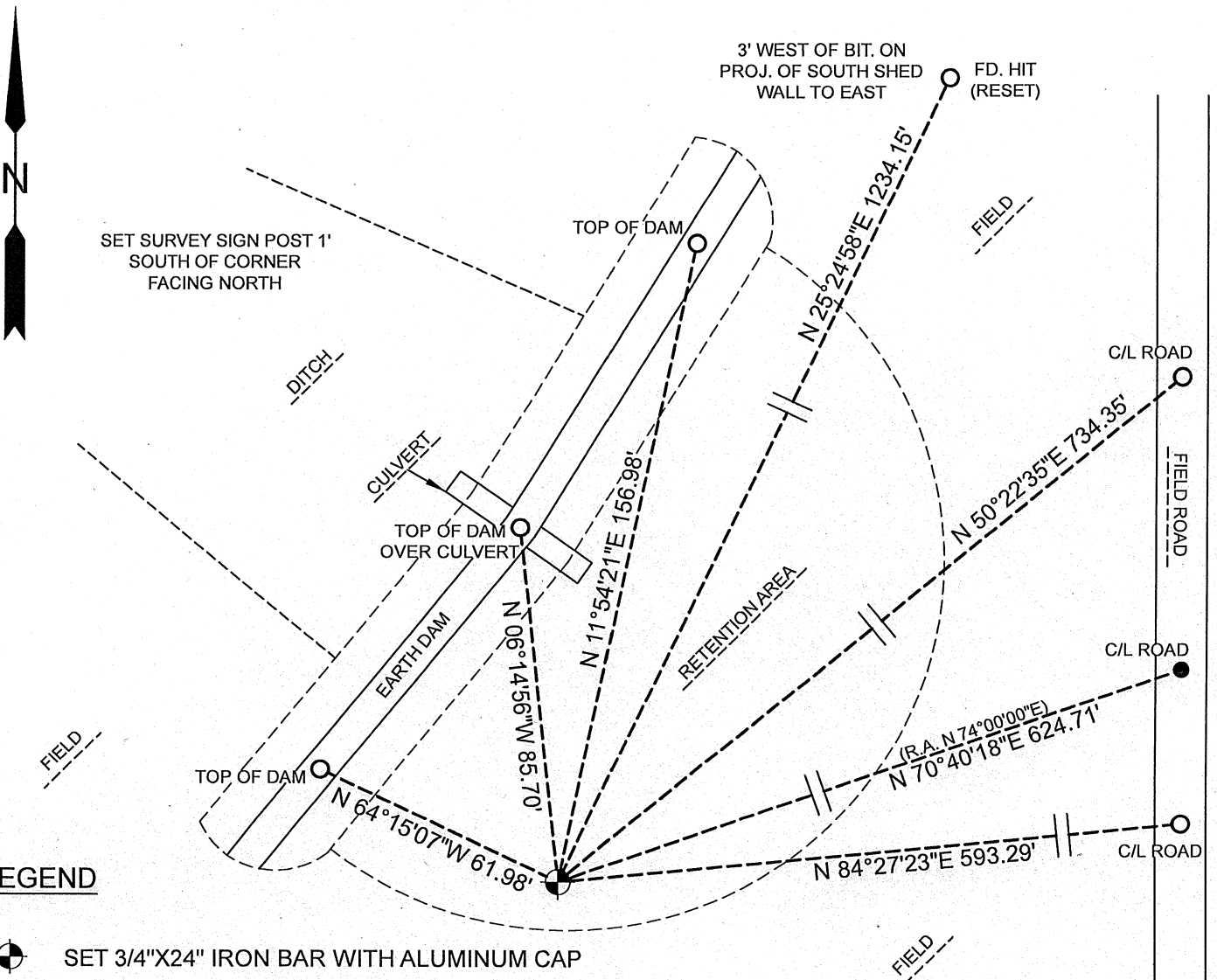
DATUM: SPC- WI SOUTH NAD83(91)  
NORTH: 648,614.185'  
EAST: 1,722,654.152'  
ELEVATION: 1,239.25'  
TYPE OF MONUMENT: SET 3/4"x24" IRON BAR  
CREW: COREY HUGHES, BRYAN MEYER  
DATE: JULY 8, 2021



LOCATION OF LANDMARK

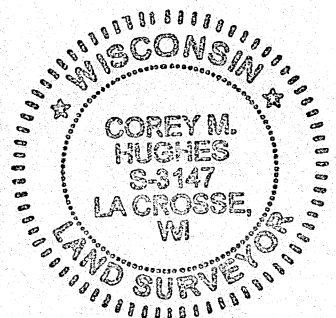
**August 5th, 2020-** Bryan Meyer and I were informed by the La Crosse County Land Conservation Department that this corner was likely going to be removed due to the construction of an erosion control dam that was going to be built in the area. We found the 3/4" iron bar of record in good condition and 1 of Jung's ties and established 3 new ties

**July 8th, 2021-** Bryan Meyer and I returned to this corner and did not find the 3/4" iron bar at the corner but did find all 4 ties from 8/5/2020. Using the found ties I set a 3/4"x24" iron bar with aluminum cap at the previous corner location and established 3 new ties as shown.



LEGEND

- ⊕ SET 3/4"x24" IRON BAR WITH ALUMINUM CAP
- SET 3/4"x18" IRON BAR  
(weighing 1.50lbs./ft.)
- FOUND 3/4" IRON BAR



*Corey Hughes*  
Corey M. Hughes

9-2-2020  
Date

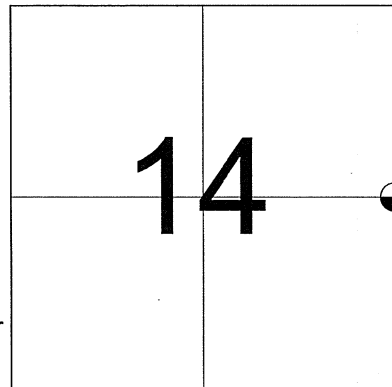
I, Corey M. Hughes, Hereby certify that the corner location shown on this record was determined by me or under my direction and control and that this U.S. Public Land Survey Monument Record Addendum is correct and complete to the best of my knowledge and belief.

CORNER ID:  
21505142000

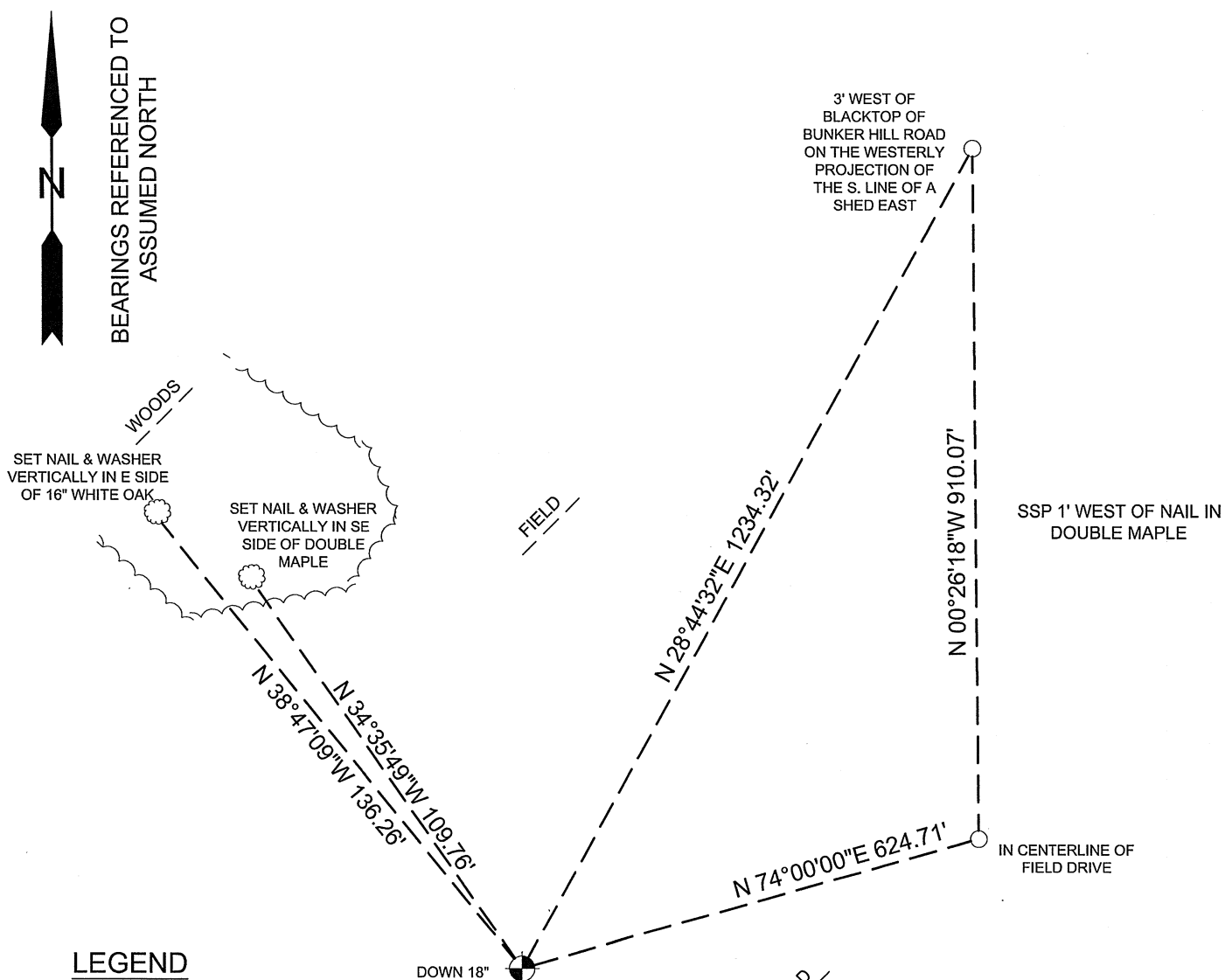
# MAINTENANCE- PUBLIC LAND SURVEY MONUMENT RECORD

## TIE SHEET UPDATE-21505142000 (LA CROSSE COUNTY INDEX 76A)

The owner of the lands this corner falls on contacted the County Surveyors office. He indicated that he had done some bulldozer work to remove trees in the area of this corner and that he wanted to do more when he saw the survey marker warning sign. He asked that we remove the corner so he could complete his bulldozer work. I referenced the corner out on April 16, 2013 and indicated to the landowner that my work was done for the time being. The landowner proceeded to complete his project. Following the bulldozer work, the landowner called back to indicated his project was completed. Peter Follansbee and I reset the corner on June 14, 2013 with a 3/4"x24" rebar, down 18". We acquired ties as shown below.

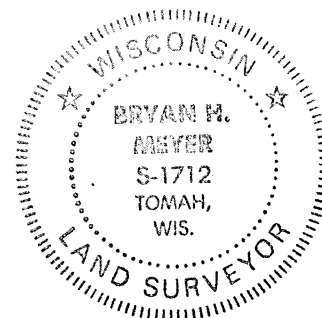


LOCATION OF LANDMARK



**LEGEND**

- SET 3/4"X24" IRON BAR (1.50lbs/ft)
- TREE AS DESCRIBED
- SET 3/4"X24" REBAR (1.50lbs/ft)



*Bryan H. Meyer*  
 \_\_\_\_\_  
 Bryan H. Meyer  
 La Crosse County Surveyor

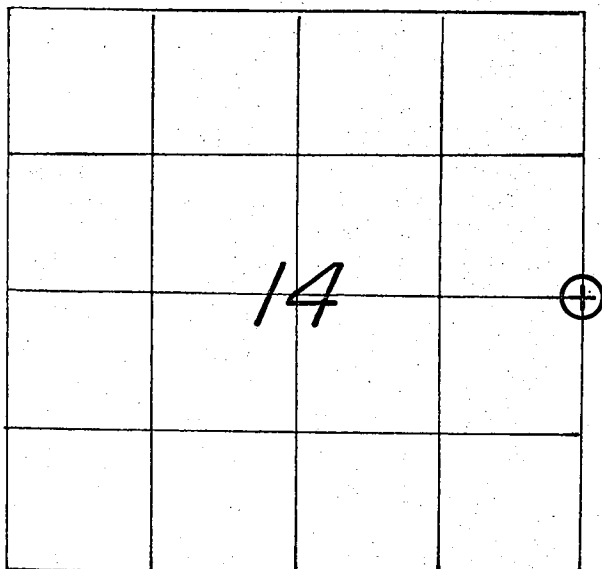
*7/10/2013*  
 \_\_\_\_\_  
 Date

21505142000

## U. S. PUBLIC LAND SURVEY MONUMENT RECORD

SECTION 14 T 15 N, R 5 W, TOWN OF WASHINGTON

LA CROSSE COUNTY



LOCATION OF LANDMARK

CREW: WILLIAM C. JUNG  
 PETER F. FOLLANSBEE  
 DATE: 6/16/2004

WISCONSIN COORDINATE SYSTEM	
North	648,613.987
East	1,722,654.731
Theta Angle	
Horiz. Order	
Vert. Order	
DATUM:	1983 ('91)
TYPE OF LANDMARK	
3/4" x 30" IRON BAR WITH AN ALUMINUM CAP.	
BEARINGS ARE REFERENCED TO	
GRID NORTH AS PER SECTION DATA.	

Describe any record evidence, monument evidence, testimonial evidence or any other material evidence you considered and whether the monument was found or restored through acceptance of an obliterated evidence location.

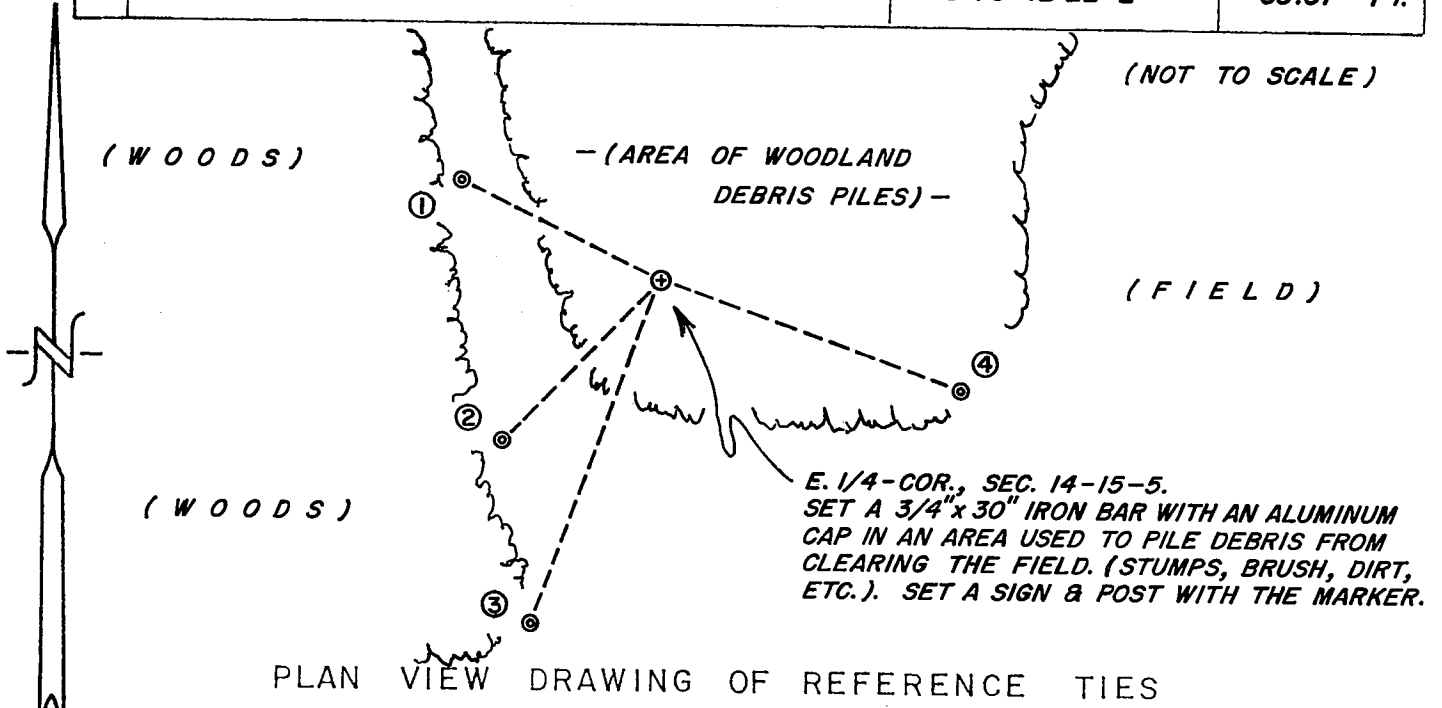
I set this corner on line and equidistant between the NE and SE section corners of Section 14. This agrees with Chris Fechner's planned and computed location for this corner. I set an ironbar and cap at the corner.

Describe or show any material discrepancy between the location of the restored corner and that of the corner previously restored or reestablished.

NONE KNOWN.

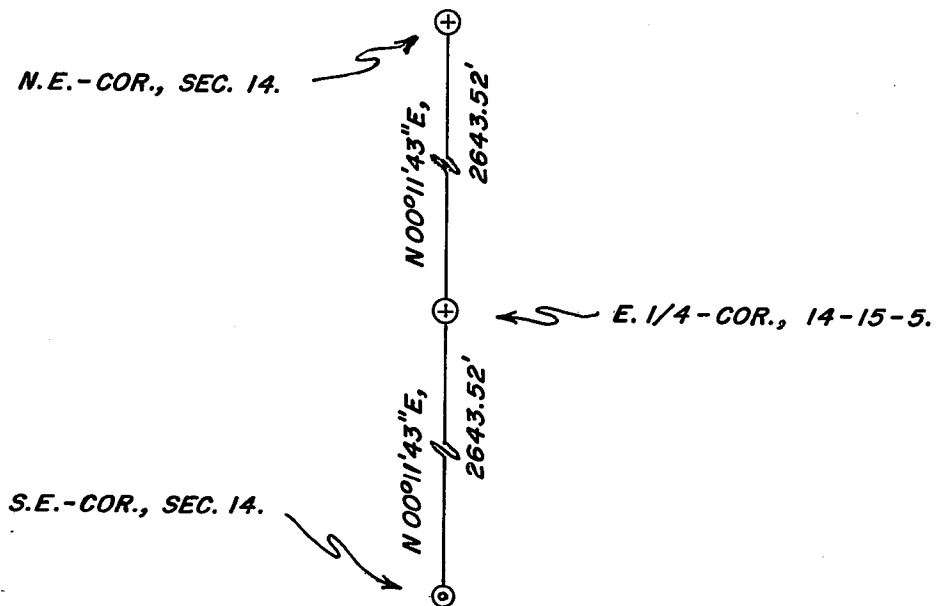
RECORD OF DURABLE WITNESS MONUMENTS

NO	DESCRIPTION	GRID BEARINGS	GROUND DIST.'s
		BEARING	DISTANCE
1	SET A 3/4"x30" IRON BAR WITH A RED PLASTIC CAP	N 63°48'03"W	46.39 FT.
2	SET A 3/4"x30" IRON BAR WITH A RED PLASTIC CAP	S 44°04'20"W	47.23 FT.
3	SET A 3/4"x30" IRON BAR WITH A RED PLASTIC CAP	S 20°21'44"W	76.59 FT.
4	SET A 3/4"x30" IRON BAR WITH A RED PLASTIC CAP	S 70°12'22"E	66.61 FT.



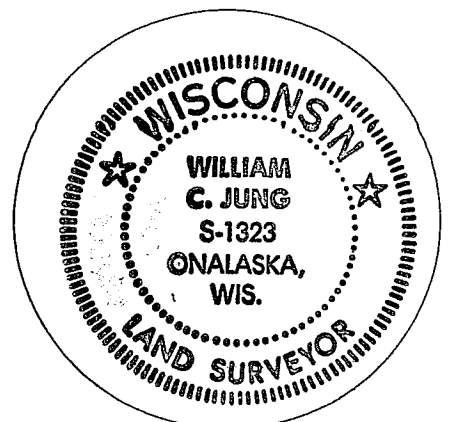
MAP SHOWING DISTANCE AND DIRECTION TO OTHER PUBLIC LAND SURVEY CORNERS USED FOR REESTABLISHING THE CORNER

(GRID BEARINGS AND DISTANCES)  
(GRID FACTOR: 0.999898)  
(NOT TO SCALE)



I, WILLIAM G. JUNG, COUNTY SURVEYOR  
HEREBY CERTIFY THAT THE CORNER LOCATION SHOWN ON THIS RECORD WAS DETERMINED BY ME OR UNDER MY DIRECTION AND CONTROL AND THAT THIS U. S. PUBLIC LAND SURVEY MONUMENT RECORD IS CORRECT AND COMPLETE TO THE BEST OF MY KNOWLEDGE AND BELIEF.

William G. Jung 1/7/05  
Signature Date



Seal