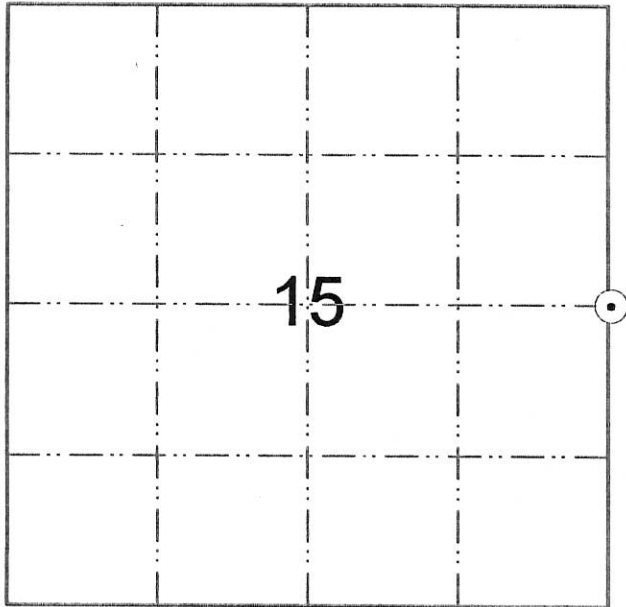


LA CROSSE COUNTY, WISCONSIN U. S. PUBLIC LAND SURVEY MONUMENT RECORD

EAST ¼ CORNER, SECTION 15, T15N, R5W, TOWN OF WASHINGTON



⊙ = LOCATION OF LANDMARK

PLAN VIEW OF REFERENCE TIES:



NO SCALE

WISCONSIN COORDINATE SYSTEM

NORTH: 648794.648

EAST: 1717391.663

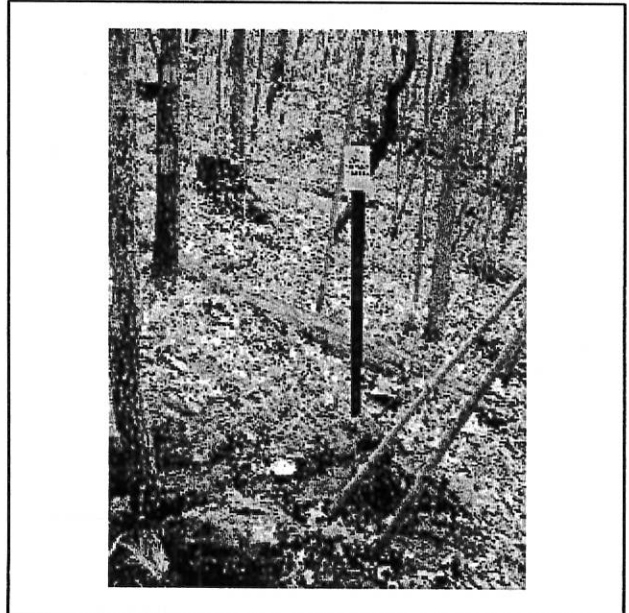
TYPE OF MONUMENT: Set 30" Berntsen Monument

BEARINGS REFERENCED TO: Magnetic North

CREW: Bryan Meyer, Pete Follansbee

DATE: April 29, 2010

WEATHER: Overcast, Windy, 65°±

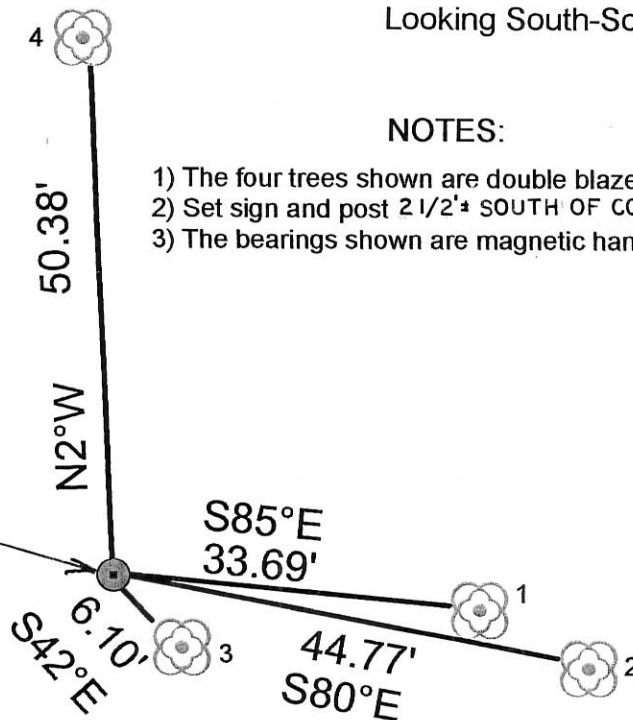


Looking South-Southeast

NOTES:

- 1) The four trees shown are double blazed.
- 2) Set sign and post 2 1/2' SOUTH OF CORNER FACING NORTH
- 3) The bearings shown are magnetic hand compass bearings.

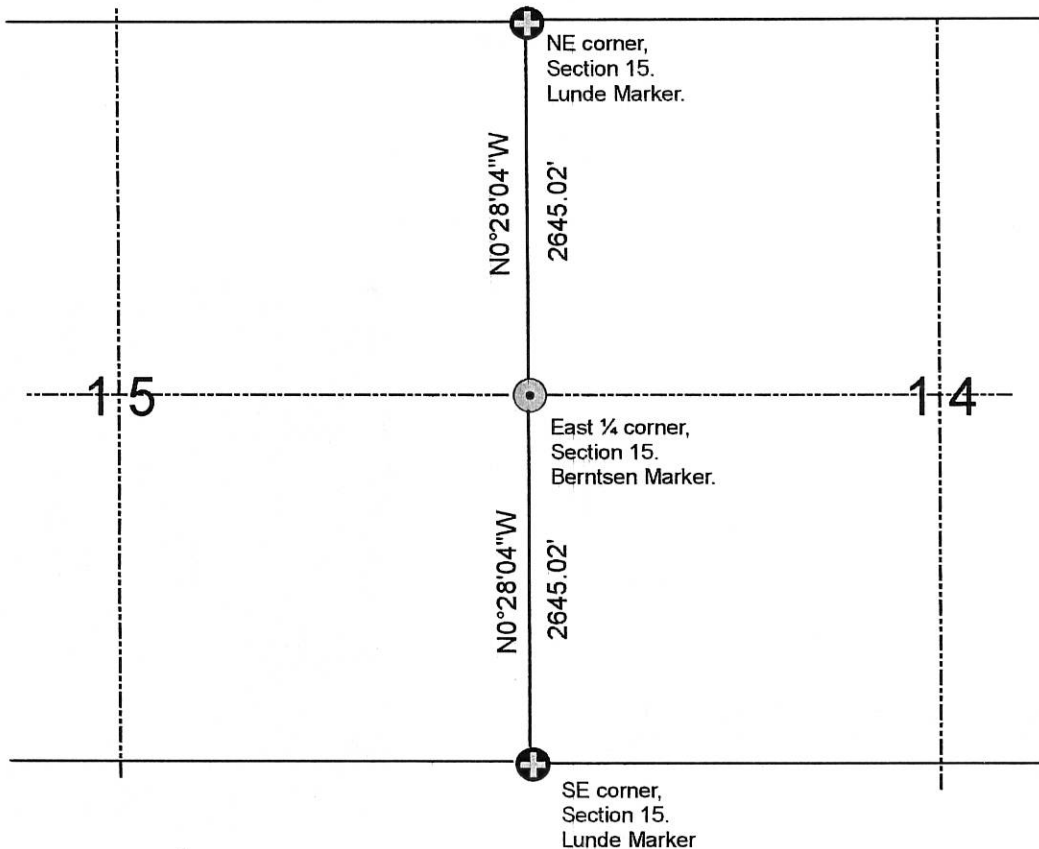
Set Berntsen marker at East ¼ corner of Section 15.



WITNESS TIES:

- 1 = Set nail & washer in Nly side of 7½" Hickory
- 2 = Set nail & washer in Sly side of 16" White Oak
- 3 = Set nail & washer in NEly side of 5" Red oak
- 4 = Set nail & washer in Ely side of 9" Hickory

NO SCALE
GRID BEARINGS AND DISTANCES



DESCRIBE ANY RECORD EVIDENCE, MONUMENT EVIDENCE, TESTIMONIAL EVIDENCE OR ANY OTHER MATERIAL EVIDENCE YOU CONSIDERED AND WHETHER THE MONUMENT WAS FOUND OR RESTORED THROUGH ACCEPTANCE OF AN OBLITERATED EVIDENCE LOCATION:

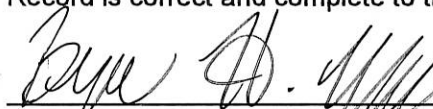
Set this corner on line and at equidistant distance between the Northeast and Southeast corners of Section 15.

DESCRIBE OR SHOW ANY MATERIAL DISCREPANCY BETWEEN THE LOCATION OF THE RESTORED CORNER AND THAT OF THE CORNER PREVIOUSLY RESTORED OR REESTABLISHED

None.

CERTIFICATE:

I, Bryan H. Meyer, County Surveyor, hereby certify that the corner location shown on this record was determined by me or under my direction and control and that this U. S. Public Land Survey Monument Record is correct and complete to the best of my knowledge and belief.


Bryan H. Meyer, County Surveyor

5/6/2010
Date

