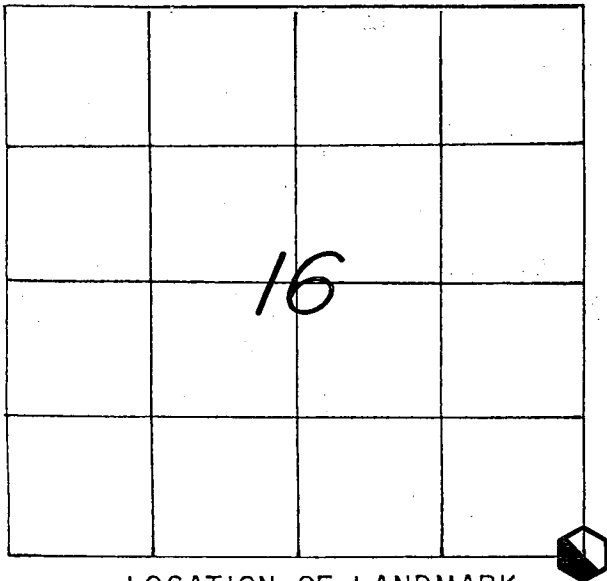


21505160000

U. S. PUBLIC LAND SURVEY MONUMENT RECORD

SECTION 16 T 15 N, R 5 W, TOWN OF WASHINGTON

LA CROSSE COUNTY



LOCATION OF LANDMARK

CREW: WILLIAM C. JUNG
 PETER F. FOLLANSBEE
 DATE: 5/02/2006

WISCONSIN COORDINATE SYSTEM	
North	646,188.109
East	1,712,150.911
Theta Angle	
Horiz. Order	
Vert. Order	
DATUM:	1983('91)
TYPE OF LANDMARK	
BERNTSEN MARKER ("SHORTY TOP")	
BEARINGS ARE REFERENCED TO	
ASSUMED NORTH AS PER SECTION DATA.	

Describe any record evidence, monument evidence, testimonial evidence or any other material evidence you considered and whether the monument was found or restored through acceptance of an obliterated evidence location.

Larry Mikshowsky requested that we bury the section corner marker as he wanted to remove the trees, brush, and old North-South fence and then farm across the section line. We removed the Lunde marker on 3/29/06 and on 5/2/06 buried a Berntsen "shorty" at the corner, down 22". Six railroad spikes were buried with the marker. I could go no further as I hit rock at 32".

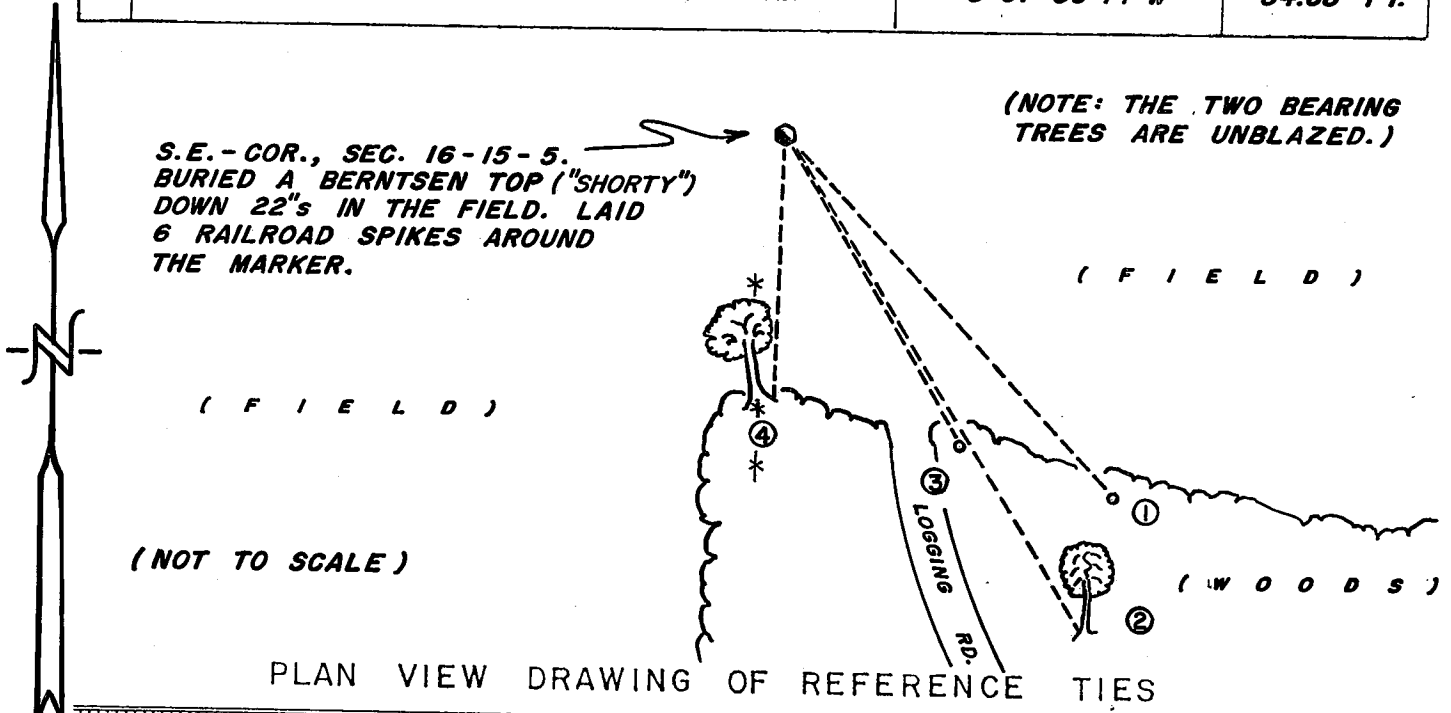
Describe or show any material discrepancy between the location of the restored corner and that of the corner previously restored or reestablished.

NONE KNOWN.

RECORD OF DURABLE WITNESS MONUMENTS

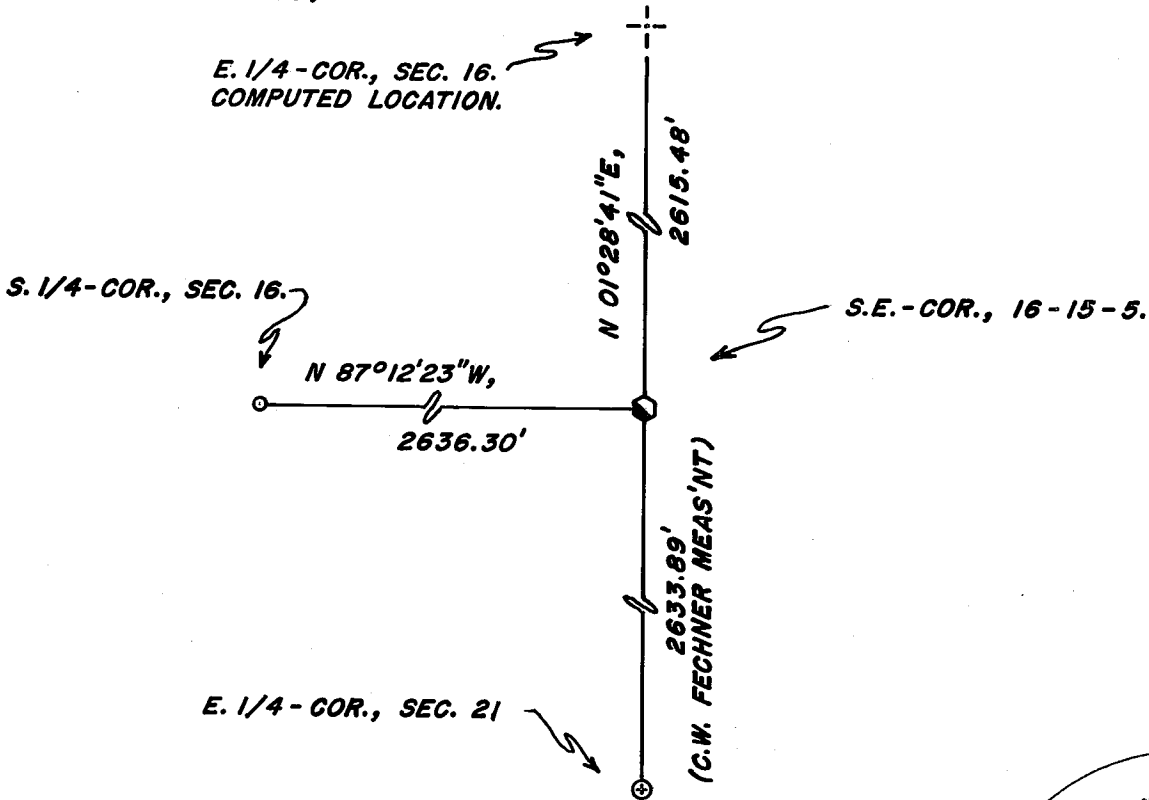
ASSUMED BEARINGS (not the same as section data)

NO	DESCRIPTION	BEARING	DISTANCE
1	SET A 3/4"x30" IRON BAR WITH A RED PLASTIC CAP	S 42°28'00"E	101.75 FT.
2	SET A PK. NAIL IN N.-SIDE OF A 14" HICKORY	S 30°50'58"E	119.86 FT.
3	SET A 3/4"x30" IRON BAR WITH A RED PLASTIC CAP	S 30°15'04"E	74.32 FT.
4	SET A PK. NAIL IN N.-ROOT OF A 20-1/2" OAK	S 01°56'44"W	54.68 FT.



MAP SHOWING DISTANCE AND DIRECTION TO OTHER PUBLIC LAND SURVEY CORNERS USED FOR REESTABLISHING THE CORNER

(ASSUMED BEARINGS)



I, WILLIAM C. JUNG, COUNTY SURVEYOR
HEREBY CERTIFY THAT THE CORNER LOCATION SHOWN ON THIS RECORD
WAS DETERMINED BY ME OR UNDER MY DIRECTION AND CONTROL AND
THAT THIS U. S. PUBLIC LAND SURVEY MONUMENT RECORD IS CORRECT
AND COMPLETE TO THE BEST OF MY KNOWLEDGE AND BELIEF.

William C. Jung
Signature

7/6/06
Date

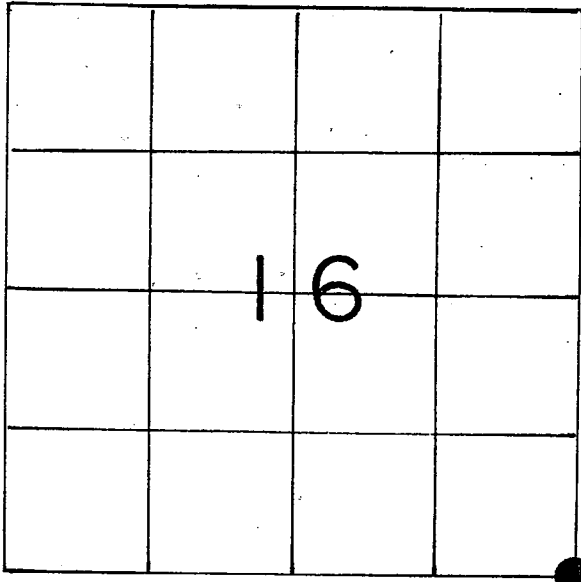


Seal

U. S. PUBLIC LAND SURVEY MONUMENT RECORD

SECTION 16 T 15 N, R 5 W, TOWN OF Washington

LA CROSSE COUNTY



LOCATION OF LANDMARK

Crew: William C. Jung
Peter FollansbeeDate: 12/7/89

WISCONSIN COORDINATE SYSTEM

North

East

Theta Angle

Horiz. Order

Vert. Order

TYPE OF LANDMARK

Brass capped Lunde marker

BEARINGS ARE REFERENCED TO

Assumed North

Describe any record evidence, monument evidence, testimonial evidence or any other material evidence you considered and whether the monument was found or restored through acceptance of an obliterated evidence location.

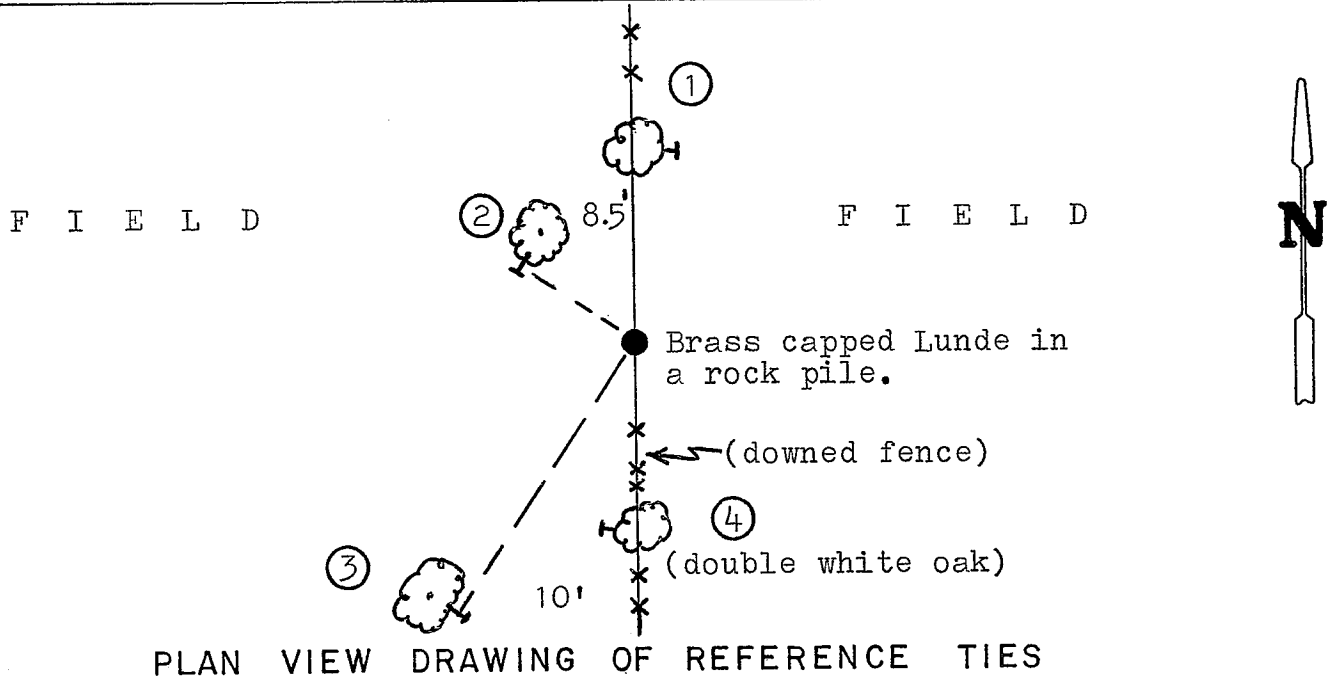
I set this corner by intersecting the fence found along the South line of Section 16 with the North-South fence found at the Southeast corner of Section 16. This fits Section 16 very well. Bob Chalsma, who is currently working in Section 22, agrees with the setting of this corner. It fits the evidence found in his section. I set a brass capped Lunde marker in a rock pile.

Describe or show any material discrepancy between the location of the restored corner and that of the corner previously restored or reestablished.

None known.

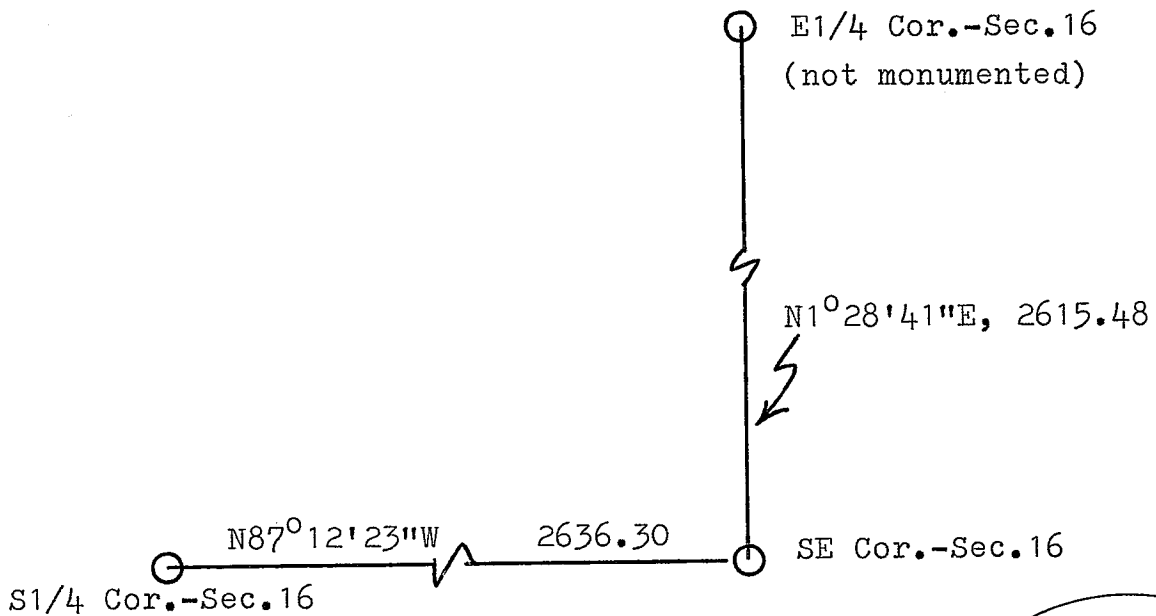
RECORD OF DURABLE WITNESS MONUMENTS

NO	DESCRIPTION	BEARING	DISTANCE
1	P.K. in single blazed 3" hickory	-----	15.67
2	" " " " 6" aspen	-----	10.84
3	" " " " 9" aspen	-----	15.28
4	" " " " 13" white oak	-----	9.67



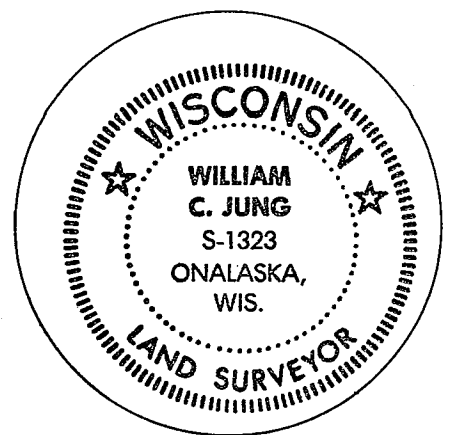
MAP SHOWING DISTANCE AND DIRECTION TO OTHER PUBLIC LAND SURVEY CORNERS USED FOR REESTABLISHING THE CORNER

(not to scale)



I, William C. Jung, Deputy County Surveyor
 HEREBY CERTIFY THAT THE CORNER LOCATION SHOWN ON THIS RECORD
 WAS DETERMINED BY ME OR UNDER MY DIRECTION AND CONTROL AND
 THAT THIS U. S. PUBLIC LAND SURVEY MONUMENT RECORD IS CORRECT
 AND COMPLETE TO THE BEST OF MY KNOWLEDGE AND BELIEF.

William C. Jung December 15, 1989
 Signature Date



Seal