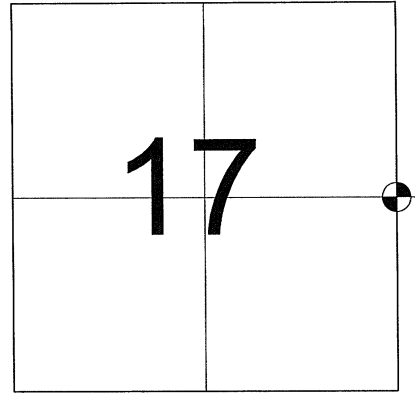


MAINTENANCE- PUBLIC LAND SURVEY MONUMENT RECORD

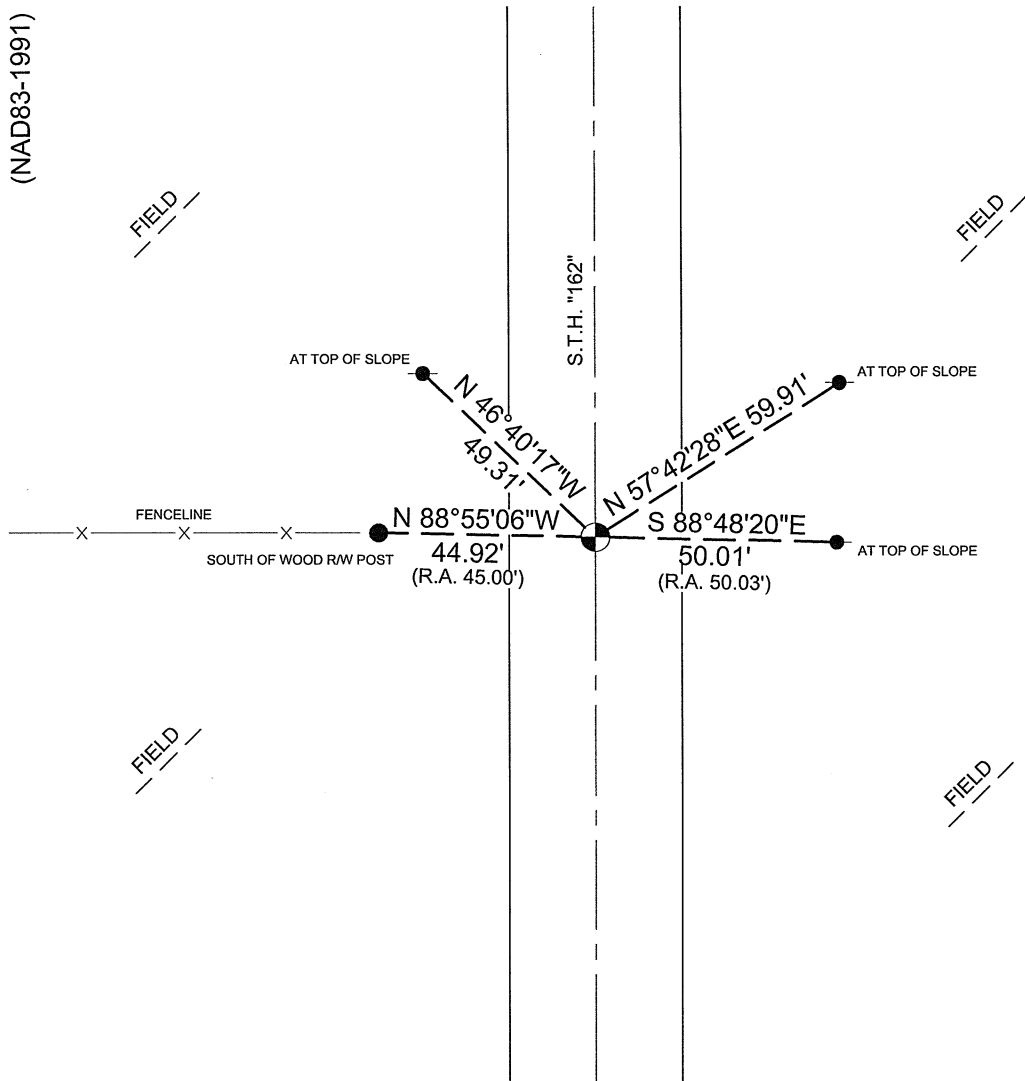
TIE SHEET UPDATE-21505172000 (LA CROSSE COUNTY INDEX 70A)

John Krage and I performed maintenance work for this corner on April 13, 2016 and found a remnant of the P.K nail set by W. Jung, using the two northerly ties I reset his position with a MAG nail and measured the ties as shown.






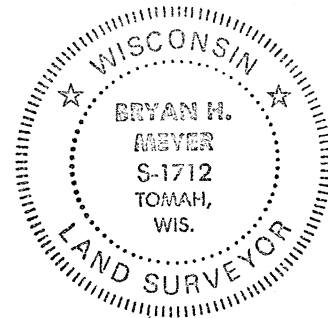
LOCATION OF LANDMARK


BEARINGS REFERENCED TO
STATE PLANE COORDINATE
SYSTEM- WISCONSIN SOUTH
(NAD83-1991)



LEGEND

-  SET MAG NAIL
-  FOUND 3/4" IRON BAR
-  FOUND 1" O.D. IRON PIPE



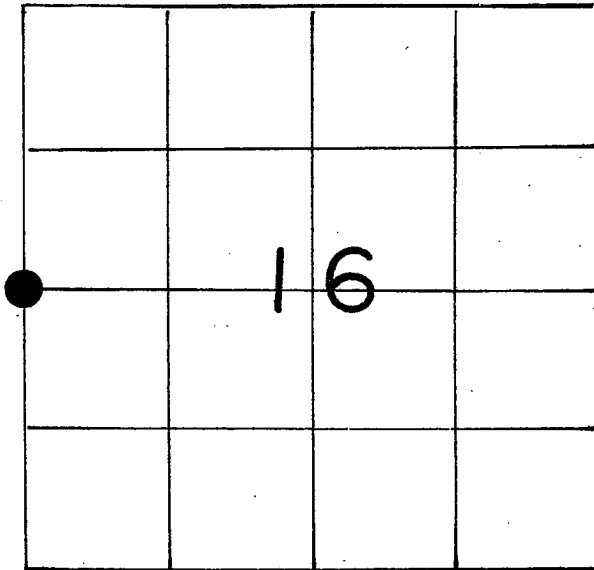

Bryan Meyer
La Crosse County Surveyor


Date

U. S. PUBLIC LAND SURVEY MONUMENT RECORD

SECTION 16 T 15 N, R 5 W, TOWN OF Washington

LA CROSSE COUNTY



LOCATION OF LANDMARK

Crew: William C. Jung
Peter FollansbeeDate: 12/7/89

Describe any record evidence, monument evidence, testimonial evidence or any other material evidence you considered and whether the monument was found or restored through acceptance of an obliterated evidence location.

I set the corner on line with ^{the} fence to the West and in the road centerline. This occupied corner location fits the old highway map and the section measurements. The corner is only off line 9" between the section corners. I accepted this location as the best available evidence of the original government corner position.

The railroad spike was knocked out during repaving of "162" last year. We set a P.K. nail at the corner location.

Describe or show any material discrepancy between the location of the restored corner and that of the corner previously restored or reestablished.

None known.

WISCONSIN COORDINATE SYSTEM

North 648,906.999

East 1,706,861.651

Theta Angle

Horiz. Order

Vert. Order

Datum: 1983('91)

TYPE OF LANDMARK

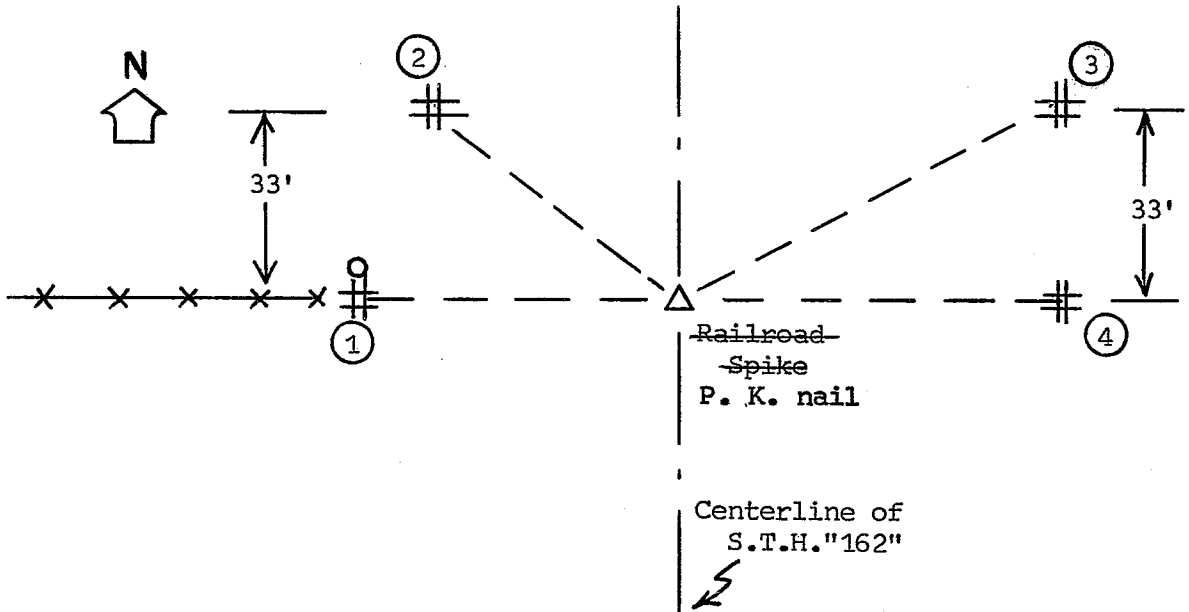
~~Railroad Spike~~ P.K. nail

BEARINGS ARE REFERENCED TO

Assumed North

RECORD OF DURABLE WITNESS MONUMENTS

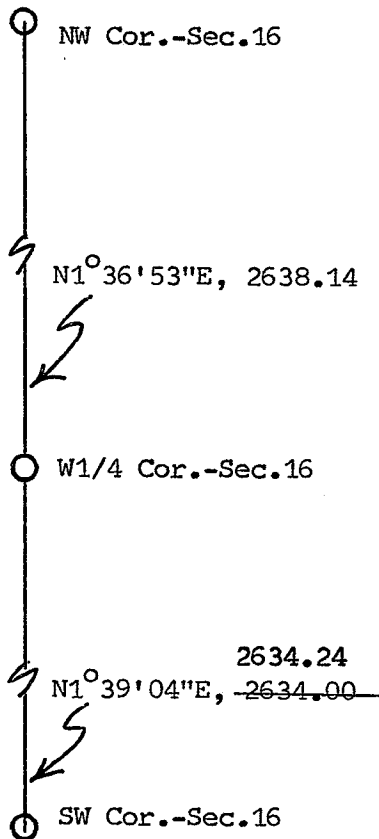
NO	DESCRIPTION	BEARING	DISTANCE
1	Set 1"x28" iron pipe South of wood R/W post	West _±	45.00
2	Set 3/4"x24" round iron bar at top of slope	-----	49.31
3	" " " " "	-----	59.91
4	" " " " "	East _±	50.03



PLAN VIEW DRAWING OF REFERENCE TIES

MAP SHOWING DISTANCE AND DIRECTION TO OTHER PUBLIC LAND SURVEY CORNERS USED FOR REESTABLISHING THE CORNER

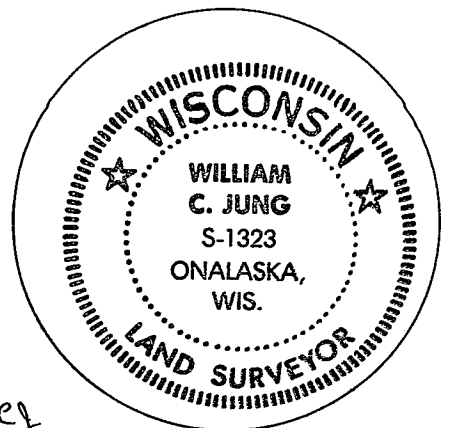
(not to scale)



I, William C. Jung, Deputy County Surveyor,
 HEREBY CERTIFY THAT THE CORNER LOCATION SHOWN ON THIS RECORD
 WAS DETERMINED BY ME OR UNDER MY DIRECTION AND CONTROL AND
 THAT THIS U. S. PUBLIC LAND SURVEY MONUMENT RECORD IS CORRECT
 AND COMPLETE TO THE BEST OF MY KNOWLEDGE AND BELIEF.

William C. Jung
 Signature

December 14, 1989
 Date



Seal