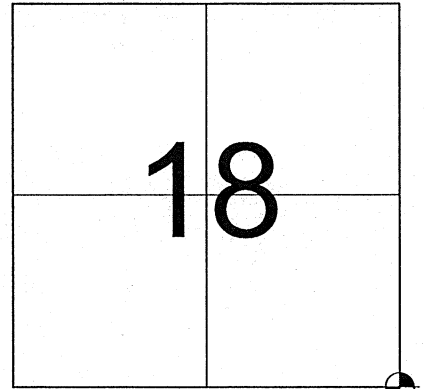


US PUBLIC LAND SURVEY MONUMENT RECORD-ADDENDUM  
TIE SHEET ADDENDUM-21505180000 (LA CROSSE COUNTY INDEX 89A)

2020-2

SECTION 18 T. 15 N., R. 5 W. TOWN OF WASHINGTON  
LA CROSSE COUNTY, WI.

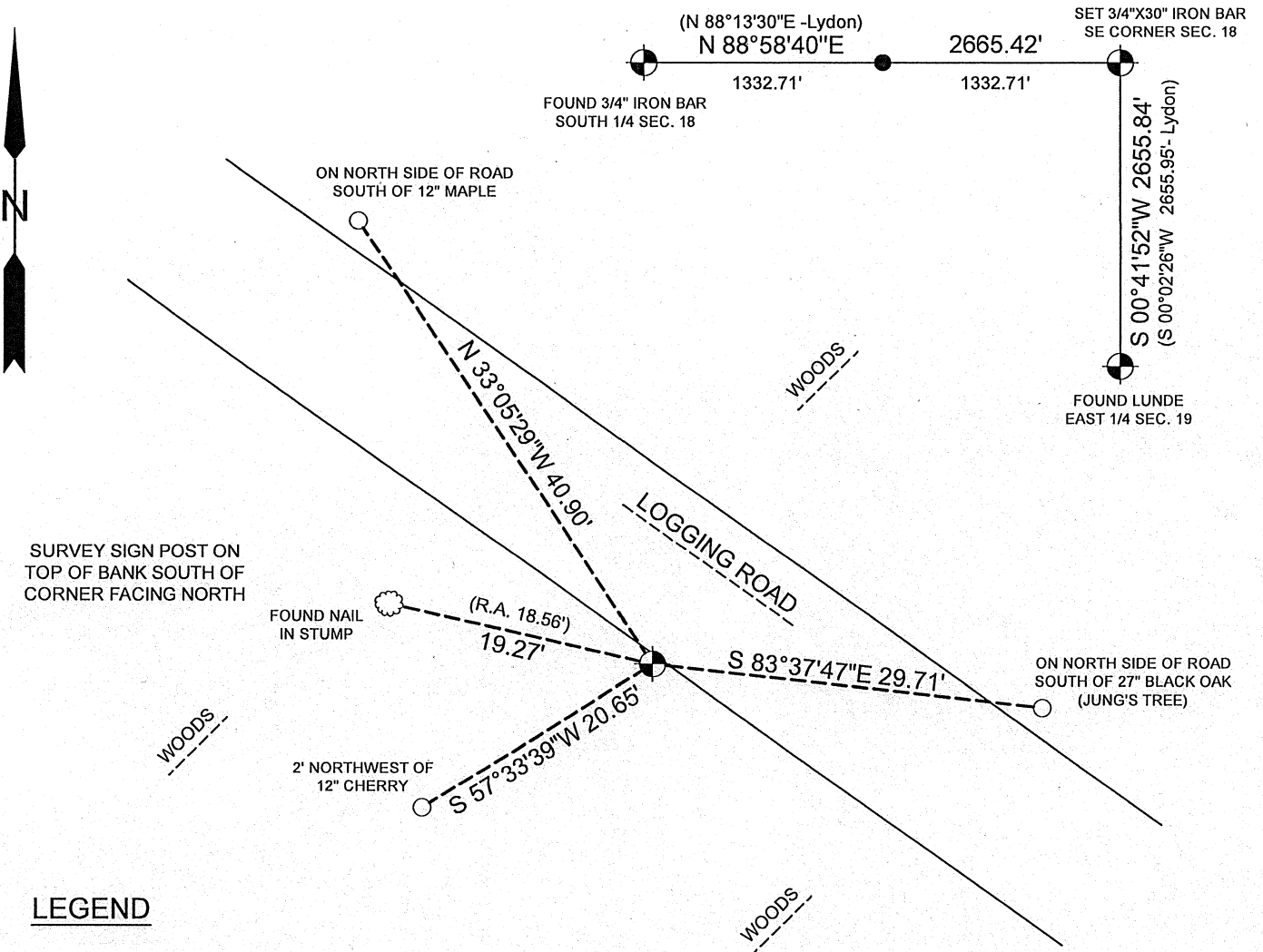


LOCATION OF LANDMARK

WISCONSIN COORDINATE SYSTEM

DATUM: SPC- WI SOUTH NAD83(91)  
NORTH: 646,393.269'  
EAST: 1,701,534.634'  
ELEVATION:  
TYPE OF MONUMENT: SET 3/4"X30" IRON BAR  
CREW: BRYAN MEYER, COREY HUGHES  
DATE: JANUARY 10, 2020

**January 10th, 2020-** Bryan Meyer and I received a call from C. Running that this corner had been removed likely during the construction of a new logging road. We found 2 of Jung's ties existing, but were not able to reestablish the pipe from these ties. We found a 3/4" iron bar at the southwest corner of the SE-SE of section 18 set by M.Lydon. I doubled that distance over from the South  $\frac{1}{4}$  of section 18. This position fits the recorded distances to the south very well. I accepted this position and set a 3/4"x30" iron bar with La Crosse county aluminum cap and established new ties as shown.



LEGEND

- 3/4" IRON BAR WITH ALUMINUM CAP
- SET 3/4"X18" IRON BAR (1.50 lbs/ft.)
- FOUND 3/4" IRON BAR
- TREE AS DESCRIBED



*Corey Hughes*  
Corey M. Hughes

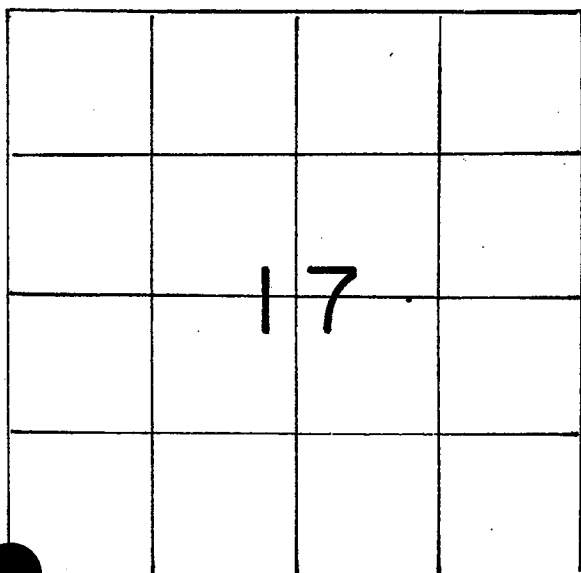
4-7-2020  
Date

I, Corey M. Hughes, Hereby certify that the corner location shown on this record was determined by me or under my direction and control and that this U.S. Public Land Survey Monument Record Addendum is correct and complete to the best of my knowledge and belief.

CORNER ID:  
21505180000

U. S. PUBLIC LAND SURVEY MONUMENT RECORD

SECTION 17 T 15 N, R 5 W, TOWN OF WASHINGTON  
 LA CROSSE COUNTY



LOCATION OF LANDMARK

Crew: WILLIAM C. JUNG  
 PETER F. FOLLANSBEE

Date: 10/09/1990

Describe any record evidence, monument evidence, testimonial evidence or any other material evidence you considered and whether the monument was found or restored through acceptance of an obliterated evidence location.

Rob Lampman set a pipe at this corner in August of 1984. I accepted the location of the pipe as the corner. The pipe is in a rock pile.

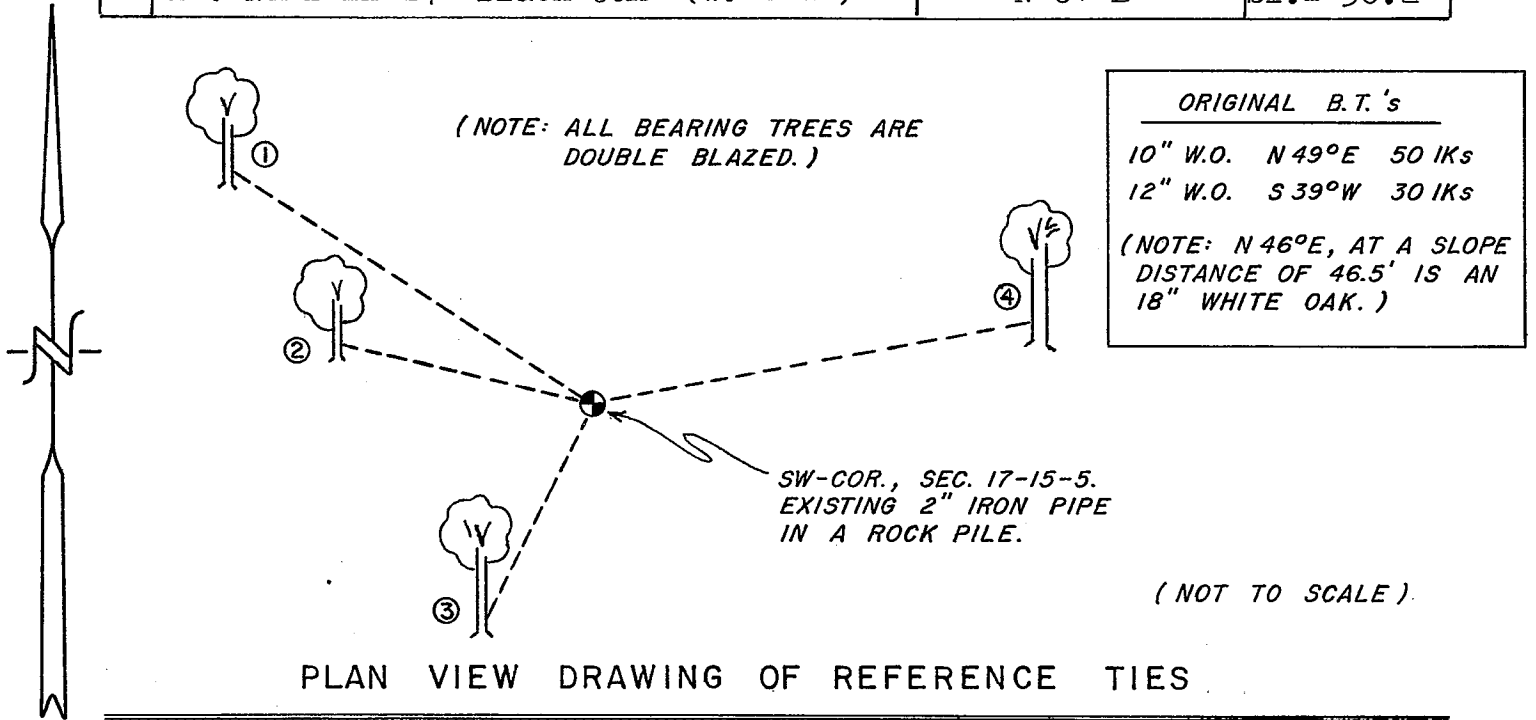
WISCONSIN COORDINATE SYSTEM
North
East
Theta Angle
Horiz. Order
Vert. Order
TYPE OF LANDMARK
Ex. 2" Iron Pipe in rock pile
BEARINGS ARE REFERENCED TO
Assumed

Describe or show any material discrepancy between the location of the restored corner and that of the corner previously restored or reestablished.

NONE KNOWN

RECORD OF DURABLE WITNESS MONUMENTS

NO	DESCRIPTION	MAGNETIC	
		BEARING	DISTANCE
1	Set P.K. Nail in 11" Oak (SW-side)	N 62°W	34.97 Ft.
2	Ex. Nail in 12" White Oak (E.-side)	N 77°W	18.56 Ft.
3	Ex. Nail in 12" Hickory (NE-side)	S 37°W	18.83 Ft.
4	Ex. Nail in 24" Black Oak (W.-side)	N 81°E	Sl.= 36.2'



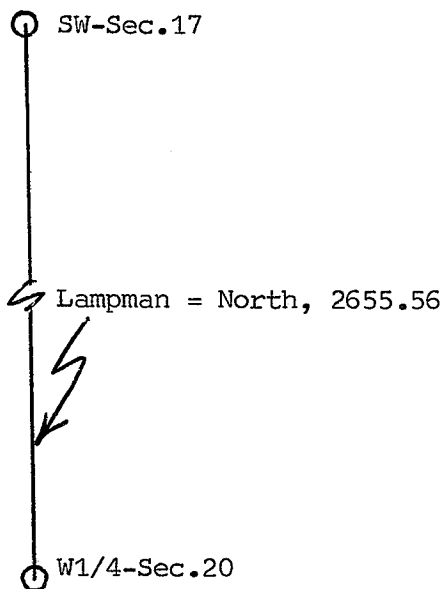
ORIGINAL B.T.'s

10" W.O. N 49°E 50 IKs  
12" W.O. S 39°W 30 IKs

(NOTE: N 46°E, AT A SLOPE  
DISTANCE OF 46.5' IS AN  
18" WHITE OAK.)

MAP SHOWING DISTANCE AND DIRECTION TO OTHER PUBLIC LAND SURVEY CORNERS USED FOR REESTABLISHING THE CORNER

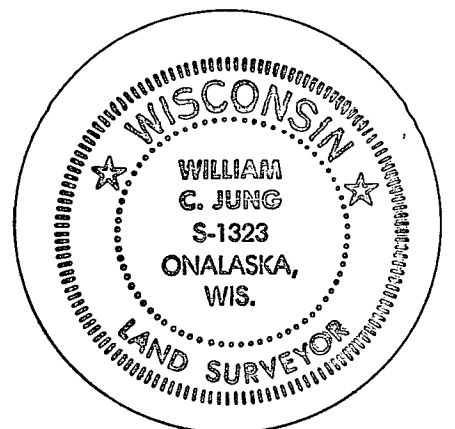
(not to scale)



I, William C. Jung, Deputy County Surveyor  
HEREBY CERTIFY THAT THE CORNER LOCATION SHOWN ON THIS RECORD  
WAS DETERMINED BY ME OR UNDER MY DIRECTION AND CONTROL AND  
THAT THIS U. S. PUBLIC LAND SURVEY MONUMENT RECORD IS CORRECT  
AND COMPLETE TO THE BEST OF MY KNOWLEDGE AND BELIEF.

William C. Jung  
Signature

January 11, 1991  
Date



Seal