

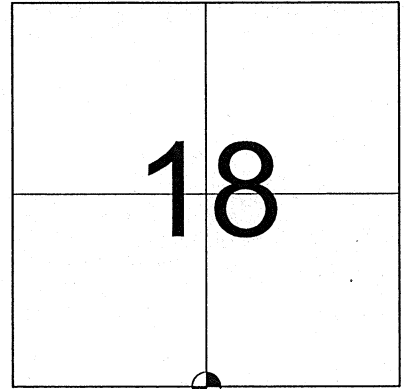
US PUBLIC LAND SURVEY MONUMENT RECORD-ADDENDUM
TIE SHEET ADDENDUM-21505180020 (LA CROSSE COUNTY INDEX 90A)

2020-1

SECTION 18 T. 15 N., R. 5 W. TOWN OF WASHINGTON
LA CROSSE COUNTY, WI.

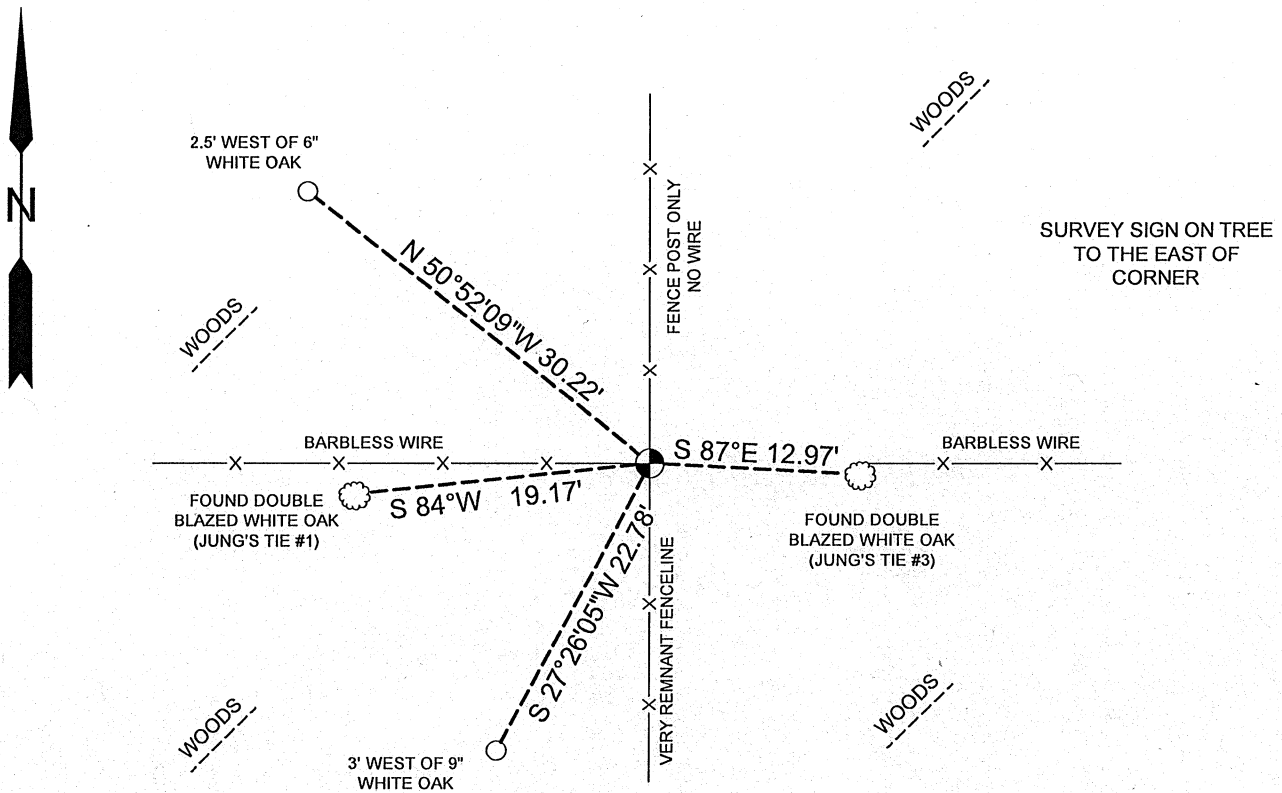
WISCONSIN COORDINATE SYSTEM

DATUM: SPC- WI SOUTH NAD83(91)
NORTH: 646,345.722'
EAST: 1,698,869.868'
ELEVATION: 1139.48'
TYPE OF MONUMENT: FOUND 3/4" IRON BAR
CREW: BRYAN MEYER, COREY HUGHES
DATE: JANUARY 10, 2020



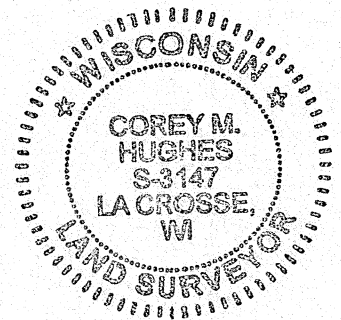
LOCATION OF LANDMARK

January 10th, 2020- Bryan Meyer and I found the 3/4" iron bar up and leaning. We found 2 previous Ties and using said ties we plumbed the 3/4" iron bar to the previous location and set a La Crosse county aluminum cap. We also established 2 new ties as shown.



LEGEND

- 3/4" IRON BAR WITH ALUMINUM CAP
- SET 3/4"X18" IRON BAR (1.50 lbs/ft.)
- TREE AS DESCRIBED



Corey Hughes
Corey M. Hughes

4-7-2020
Date

I, Corey M. Hughes, Hereby certify that the corner location shown on this record was determined by me or under my direction and control and that this U.S. Public Land Survey Monument Record Addendum is correct and complete to the best of my knowledge and belief.

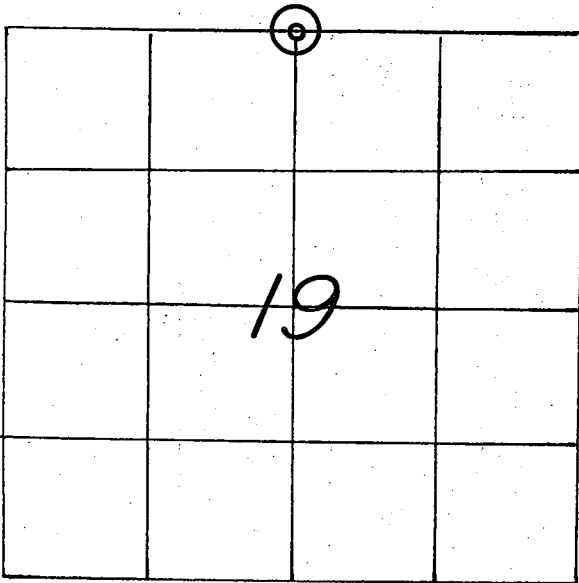
CORNER ID:
21505180020

21505180020

U. S. PUBLIC LAND SURVEY MONUMENT RECORD

SECTION 19 T 15 N, R 5 W, TOWN OF WASHINGTON

LA CROSSE COUNTY



WISCONSIN COORDINATE SYSTEM

North

East

Theta Angle

Horiz. Order

Vert. Order

TYPE OF LANDMARK

3/4" IRON BAR WITH A RED PLASTIC CAP.

BEARINGS ARE REFERENCED TO

TRUE NORTH AS PER SECTION DATA.

LOCATION OF LANDMARK

CREW: **WILLIAM C. JUNG**
PETER F. FOLLANSBEE
 DATE: **7/29/2005**

Describe any record evidence, monument evidence, testimonial evidence or any other material evidence you considered and whether the monument was found or restored through acceptance of an obliterated evidence location.

Steve Solberg set an iron bar at this corner at the single proportionate position. I agree with his location. It also falls in an old North-South fence. I plumbed up the bar and put a red cap on it. The four ties are existing.

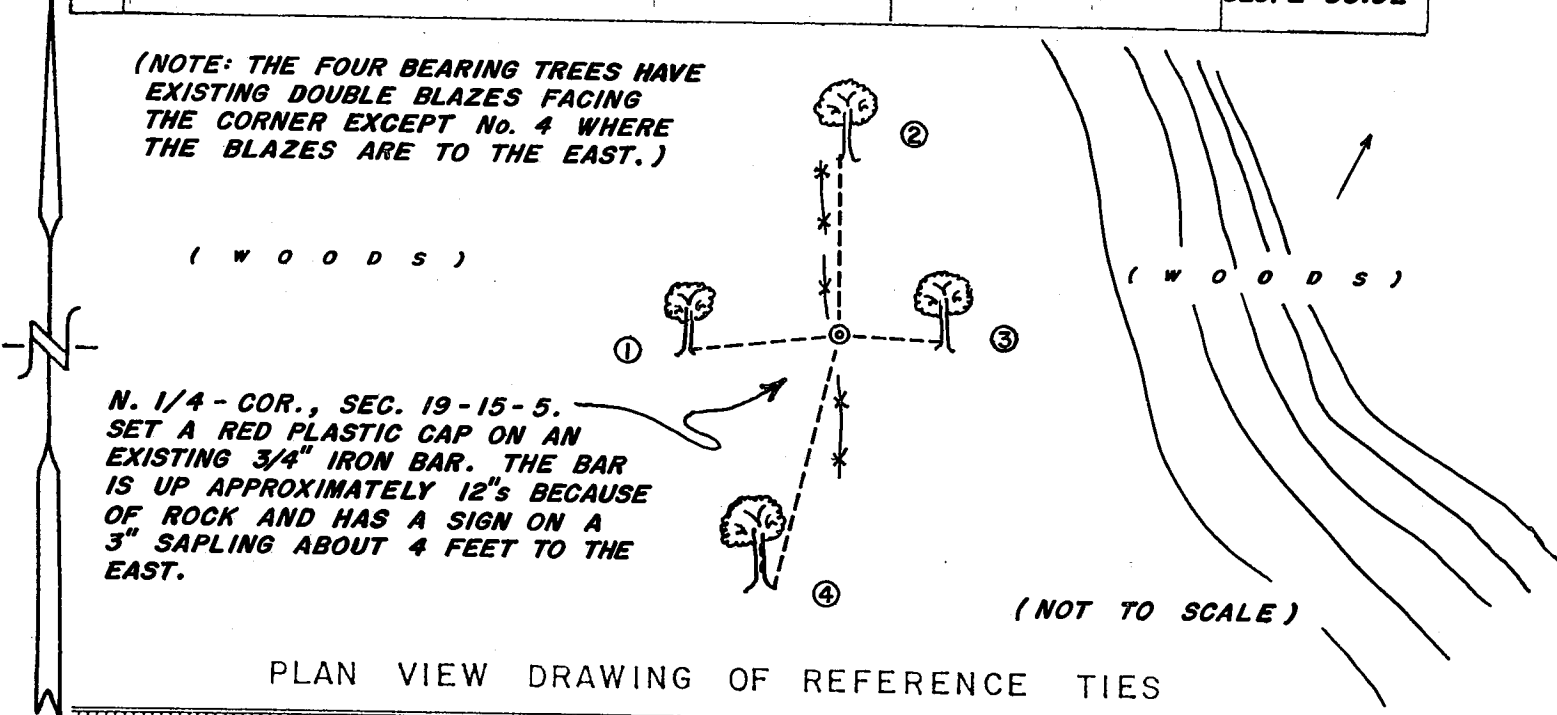
Describe or show any material discrepancy between the location of the restored corner and that of the corner previously restored or reestablished.

NONE KNOWN.

RECORD OF DURABLE WITNESS MONUMENTS

NO	DESCRIPTION	MAGNETIC	
		BEARING	DISTANCE
1	EX. P.K. NAIL IN S.E.-SIDE OF A 10-1/2" W. OAK	S 84° W	19.17 FT.
2	EX. P.K. NAIL IN W.-SIDE OF A 17" OAK	NORTH ±	SLOPE=23.08'
3	EX. P.K. NAIL IN S.-SIDE OF A 16" W. OAK	S 87° E	12.97 FT.
4	EX. P.K. NAIL IN E.-SIDE OF A 22-1/2" OAK	S 14° W	SLOPE=33.92'

(NOTE: THE FOUR BEARING TREES HAVE EXISTING DOUBLE BLAZES FACING THE CORNER EXCEPT NO. 4 WHERE THE BLAZES ARE TO THE EAST.)

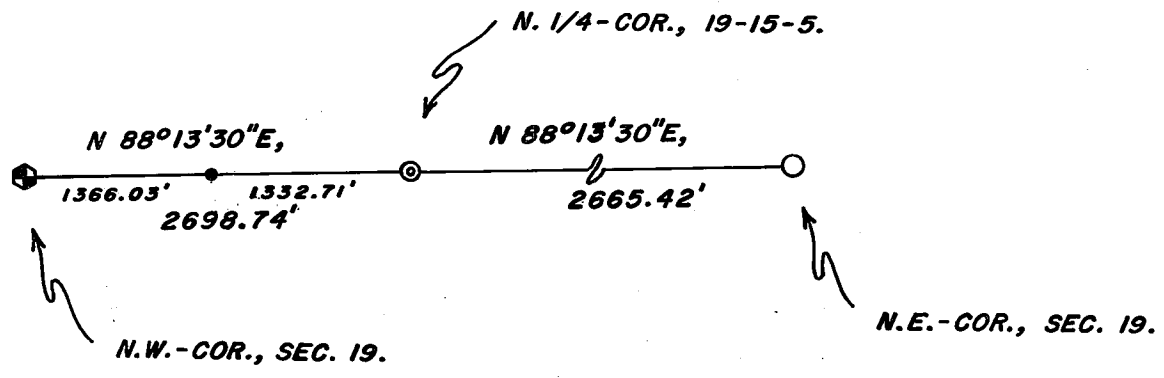


N. 1/4 - COR., SEC. 19-15-5.
 SET A RED PLASTIC CAP ON AN EXISTING 3/4" IRON BAR. THE BAR IS UP APPROXIMATELY 12" BECAUSE OF ROCK AND HAS A SIGN ON A 3" SAPLING ABOUT 4 FEET TO THE EAST.

PLAN VIEW DRAWING OF REFERENCE TIES

MAP SHOWING DISTANCE AND DIRECTION TO OTHER PUBLIC LAND SURVEY CORNERS USED FOR REESTABLISHING THE CORNER

(SOLBERG MEASUREMENTS)
 (TRUE BEARINGS)
 (NOT TO SCALE)



I, WILLIAM C. JUNG, COUNTY SURVEYOR
 HEREBY CERTIFY THAT THE CORNER LOCATION SHOWN ON THIS RECORD WAS DETERMINED BY ME OR UNDER MY DIRECTION AND CONTROL AND THAT THIS U. S. PUBLIC LAND SURVEY MONUMENT RECORD IS CORRECT AND COMPLETE TO THE BEST OF MY KNOWLEDGE AND BELIEF.

William C. Jung 12/20/05
 Signature Date



Seal