

# US PUBLIC LAND SURVEY MONUMENT RECORD-ADDENDUM

2018-74

TIE SHEET ADDENDUM-21505192000 (LA CROSSE COUNTY INDEX 94A)

SECTION 19 T. 15 N., R. 5 W.

TOWN OF WASHINGTON

LA CROSSE COUNTY, WI.

## WISCONSIN COORDINATE SYSTEM

DATUM: SPC- WI SOUTH NAD83(91)

NORTH: 643,737.854'

EAST: 1,701,502.298'

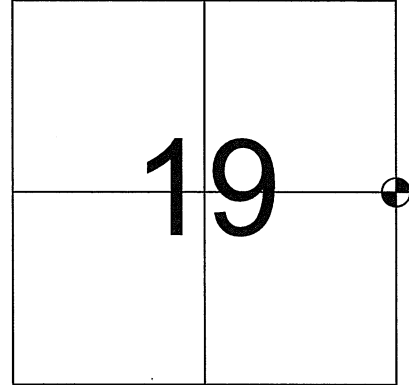
ELEVATION: 1,273.60'

TYPE OF MONUMENT: LUNDE MARKER

CREW: BRYAN MEYER, COREY HUGHES

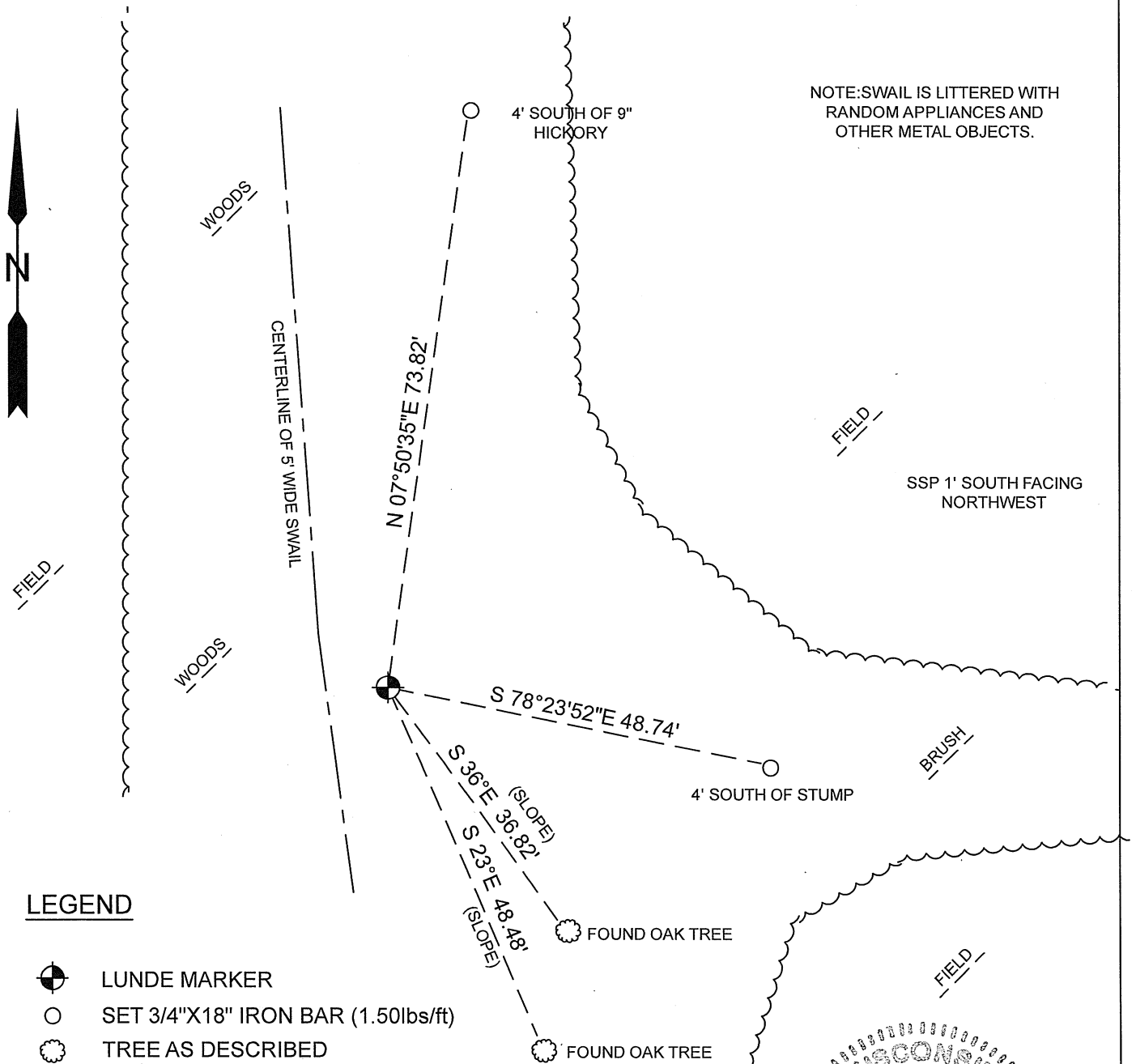
DATE: OCTOBER 4, 2018

WEATHER: SUNNY 50°



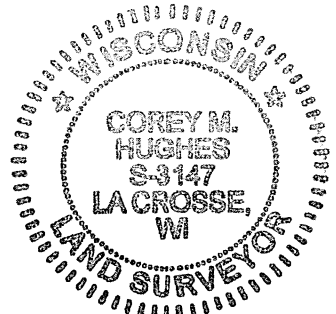
LOCATION OF LANDMARK

Bryan Meyer and I performed maintenance on this corner on October 4, 2018. We found the Lunde marker of record at the corner leaning southwesterly. We plumbed the monument and piled rocks around it, we also found 2 of W. Jung's ties and established 2 new ties as shown below.



### LEGEND

- LUNDE MARKER
- SET 3/4"X18" IRON BAR (1.50lbs/ft)
- TREE AS DESCRIBED



*Corey M Hughes*  
 Corey M. Hughes S3147

11-26-2018  
 Date

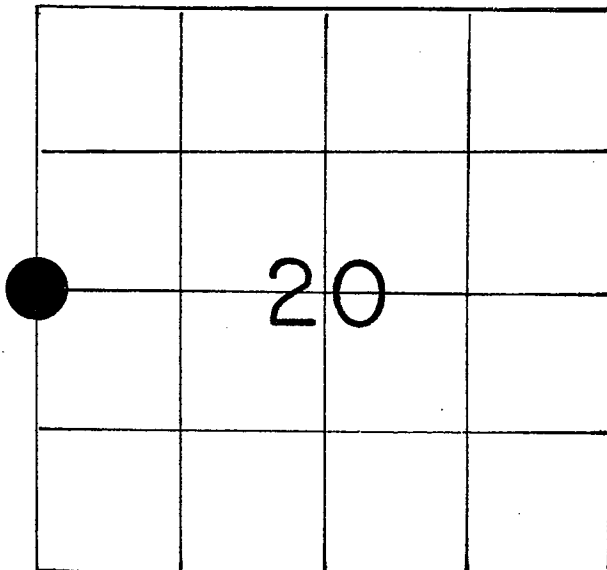
I, Corey M. Hughes, P.L.S., hereby certify that the corner location shown on this record was determined by me or under my direction and control and that this U.S. Public Land Survey Monument Record Addendum is correct and complete to the best of my knowledge and belief.

CORNER ID:  
 21505192000

## U. S. PUBLIC LAND SURVEY MONUMENT RECORD

SECTION 20 T 15 N, R 5 W, TOWN OF WASHINGTON

LA CROSSE COUNTY



LOCATION OF LANDMARK

Crew: WILLIAM C. JUNG  
PETER F. FOLLANSBEE

Date: 10/01/1990

Describe any record evidence, monument evidence, testimonial evidence or any other material evidence you considered and whether the monument was found or restored through acceptance of an obliterated evidence location.

Rob Lampman set a pipe at this corner in August of 1984. I accepted the location of the pipe, removed it, and replaced it with a Lunde marker set in a mound of rocks. I also set a sign and post on the South side of the Lunde and buried a bottle with a shell casing on the Southwest side of the marker.

Describe or show any material discrepancy between the location of the restored corner and that of the corner previously restored or reestablished.

NONE KNOWN

## WISCONSIN COORDINATE SYSTEM

North

East

Theta Angle

Horiz. Order

Vert. Order

## TYPE OF LANDMARK

Brass cap Lunde marker

## BEARINGS ARE REFERENCED TO

Assumed

RECORD OF DURABLE WITNESS MONUMENTS  
MAGNETIC

NO	DESCRIPTION	BEARING	DISTANCE
1	Ex. Nail in NE-side 11" Boxelder	S 33° W	Sl.= 22.03'
2	Ex. Nail in SW-side 20" White Oak	S 23° E	Sl.= 48.48'
3	Ex. Nail in SW-side 22" White Oak	S 36° E	Sl.= 36.82'
4	Ex. Nail in SW-side 13" dbl. Bl'k Cherry	N 72° E	26.56 Ft.

W 1/4-COR., SEC. 20-15-5.  
SET BRASS CAP LUNDE MARKER  
TO REPLACE AN IRON PIPE. SET  
LUNDE IN A MOUND OF ROCKS  
WITH SIGN AND POST ON SOUTH  
SIDE. BURIED A BOTTLE CONTAINING  
A BLANK BULLET ON THE SW-SIDE.

(NOTE: ALL DISTANCES ARE  
TO EXIST. NAILS IN EXIST.  
DOUBLE BLAZED B. T. 's)

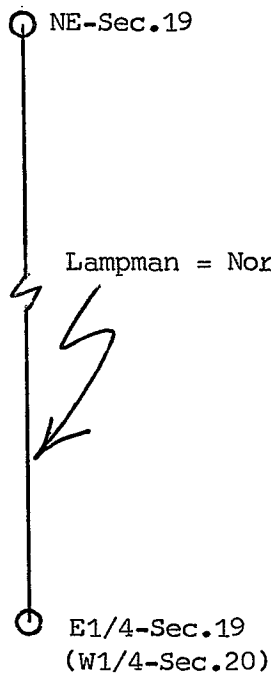
APPROX. CENTER OF GULLY.

(NOT TO SCALE)

PLAN VIEW DRAWING OF REFERENCE TIES

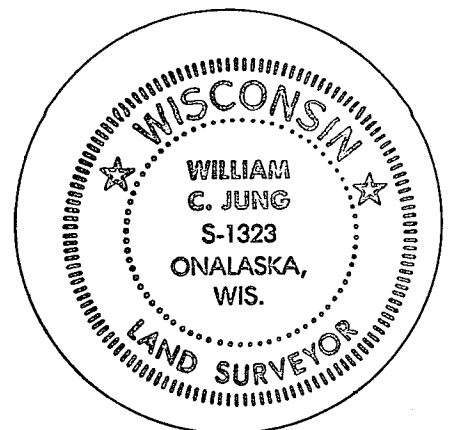
MAP SHOWING DISTANCE AND DIRECTION TO OTHER PUBLIC LAND  
SURVEY CORNERS USED FOR REESTABLISHING THE CORNER

(not to scale)



I, William C. Jung, Deputy County Surveyor  
HEREBY CERTIFY THAT THE CORNER LOCATION SHOWN ON THIS RECORD  
WAS DETERMINED BY ME OR UNDER MY DIRECTION AND CONTROL AND  
THAT THIS U. S. PUBLIC LAND SURVEY MONUMENT RECORD IS CORRECT  
AND COMPLETE TO THE BEST OF MY KNOWLEDGE AND BELIEF.

William C. Jung January 11, 1991  
Signature Date



Seal