

US PUBLIC LAND SURVEY MONUMENT RECORD- ADDENDUM
 TIE SHEET ADDENDUM-21505200020 (LA CROSSE COUNTY INDEX 114A)

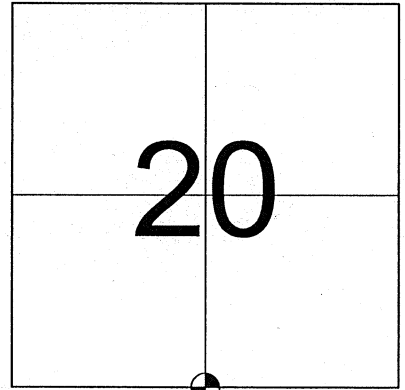
2020-65

SECTION 20 T. 15 N., R. 5 W.
 LA CROSSE COUNTY, WI.

TOWN OF WASHINGTON

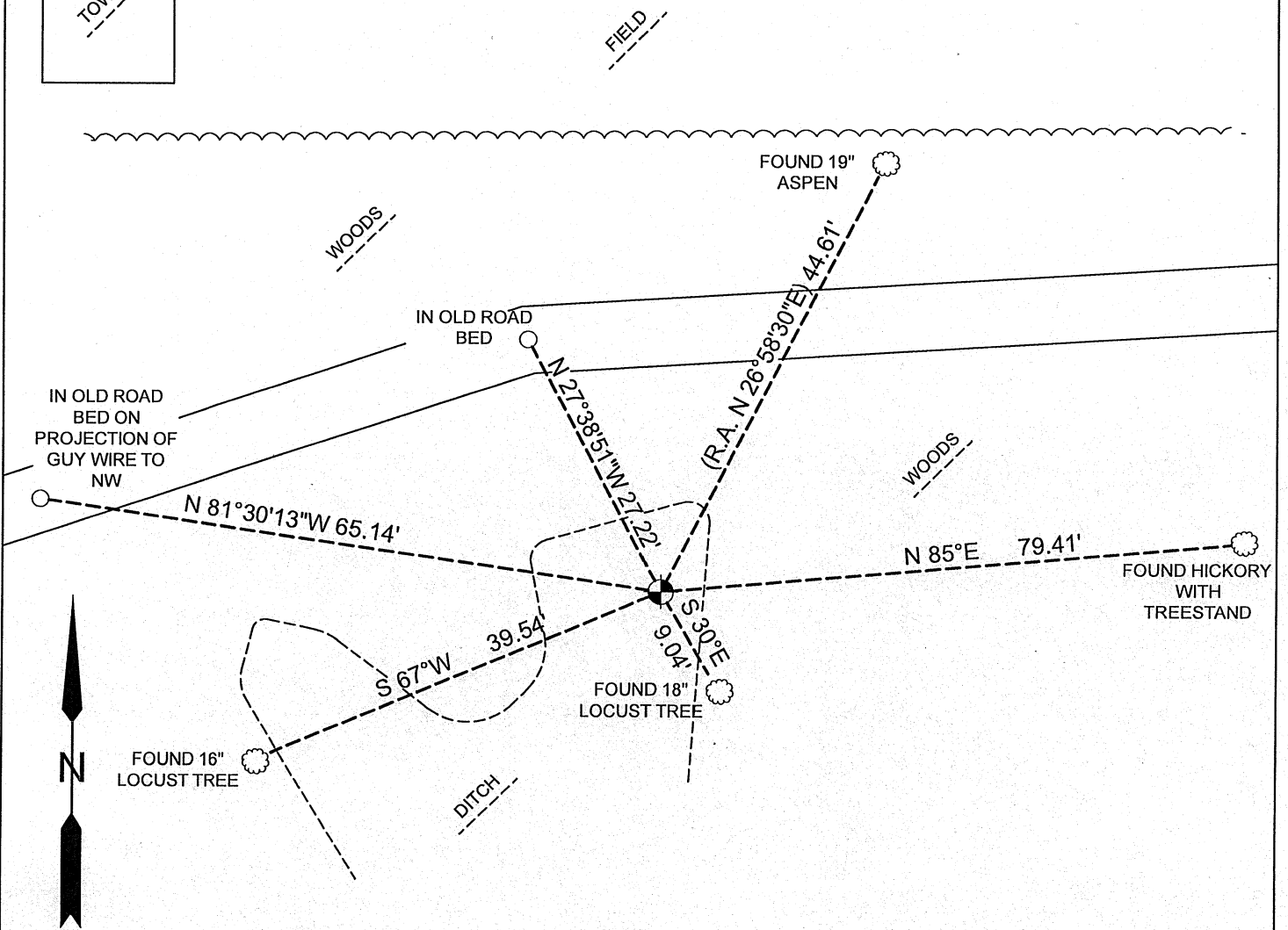
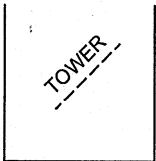
WISCONSIN COORDINATE SYSTEM

DATUM: SPC- WI SOUTH NAD83(91)
 NORTH: 641,034.381'
 EAST: 1,704,073.374'
 ELEVATION: 1,270.69'
 TYPE OF MONUMENT: 3/4" Iron Bar with Aluminum cap
 CREW: COREY HUGHES, BRYAN MEYER
 DATE: October 1, 2020



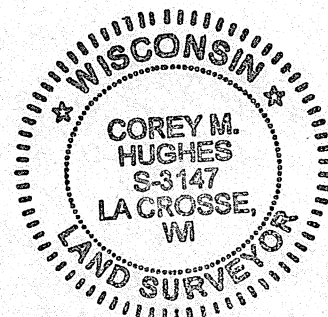
LOCATION OF LANDMARK

October 1st, 2020- Bryan Meyer and I performed maintenance on this corner and found the iron bar with aluminum cap of record in a ditch. I found all 4 of Jung's ties and established 2 new ties as shown.



LEGEND

- 3/4" IRON BAR WITH ALUMINUM CAP
- TREE AS DESCRIBED
- SET 3/4"X18" IRON BAR (1.50lbs/ft)



Corey Hughes
 Corey M. Hughes

10-8-2020
 Date

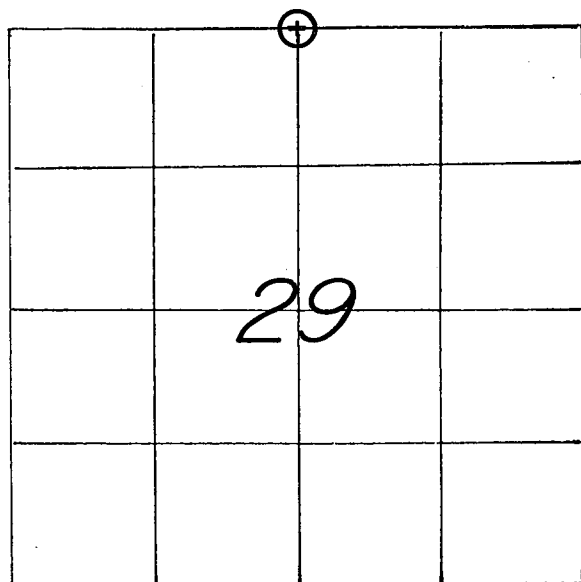
I, Corey M. Hughes, Hereby certify that the corner location shown on this record was determined by me or under my direction and control and that this U.S. Public Land Survey Monument Record Addendum is correct and complete to the best of my knowledge and belief.

CORNER ID:
 21505202000

U. S. PUBLIC LAND SURVEY MONUMENT RECORD

SECTION 29 T 15 N, R 5 W, TOWN OF WASHINGTON

LA CROSSE COUNTY



LOCATION OF LANDMARK

CREW: WILLIAM G. JUNG
 PETER F. FOLLANSBEE
 DATE: 4/24/2001

WISCONSIN COORDINATE SYSTEM

North 641,034.527

East 1,704,073.548

Theta Angle

Horiz. Order

Vert. Order

DATUM: '83('91)

TYPE OF LANDMARK

3/4" x 30" IRON BAR WITH AN ALUMINUM CAP.

BEARINGS ARE REFERENCED TO

GRID NORTH AS PER SECTION DATA.

Describe any record evidence, monument evidence, testimonial evidence or any other material evidence you considered and whether the monument was found or restored through acceptance of an obliterated evidence location.

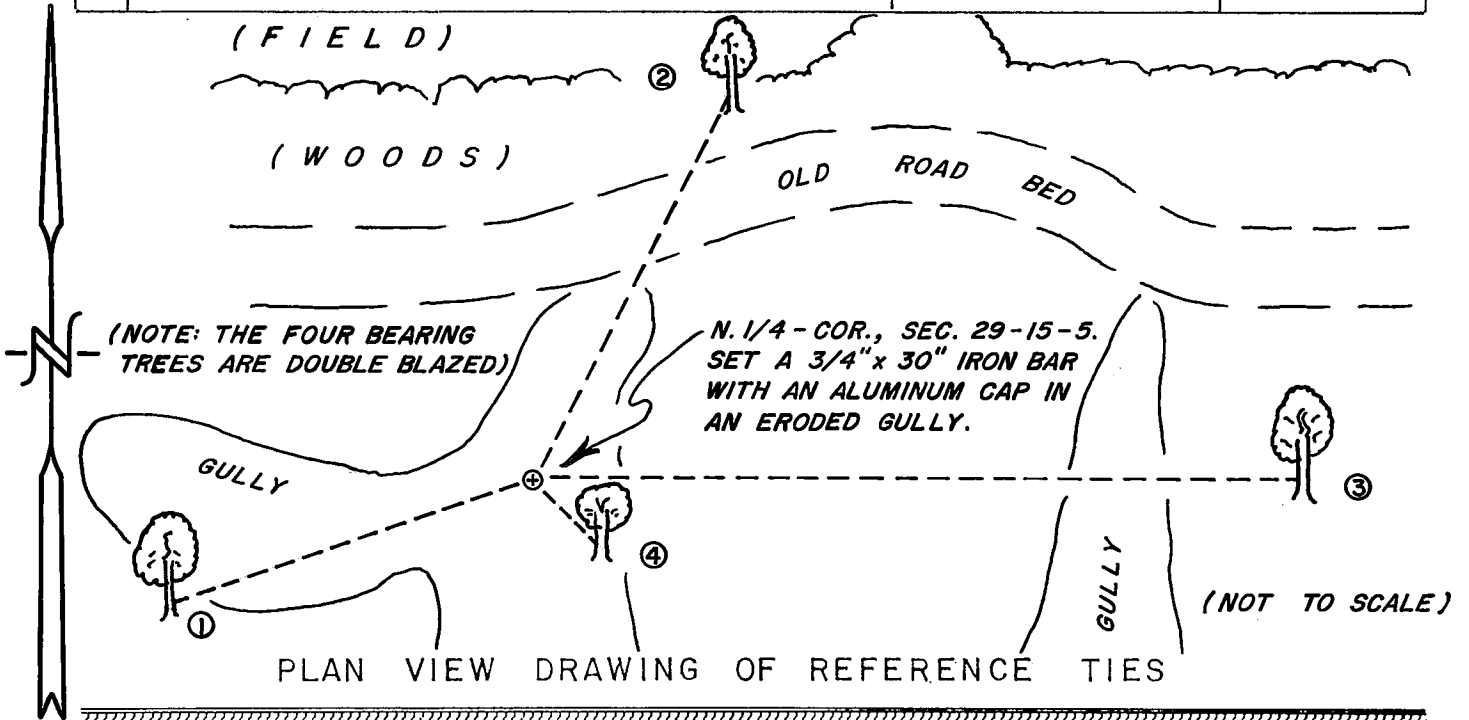
This corner was set on line with the Northwest and Northeast corners of Section 29 and on line with the old line fence to the South. Set as such the school deed for the old stone school 1/4 mile to the West also fits the final section data. The corner was monumented with an iron bar with cap.

Describe or show any material discrepancy between the location of the restored corner and that of the corner previously restored or reestablished.

NONE KNOWN.

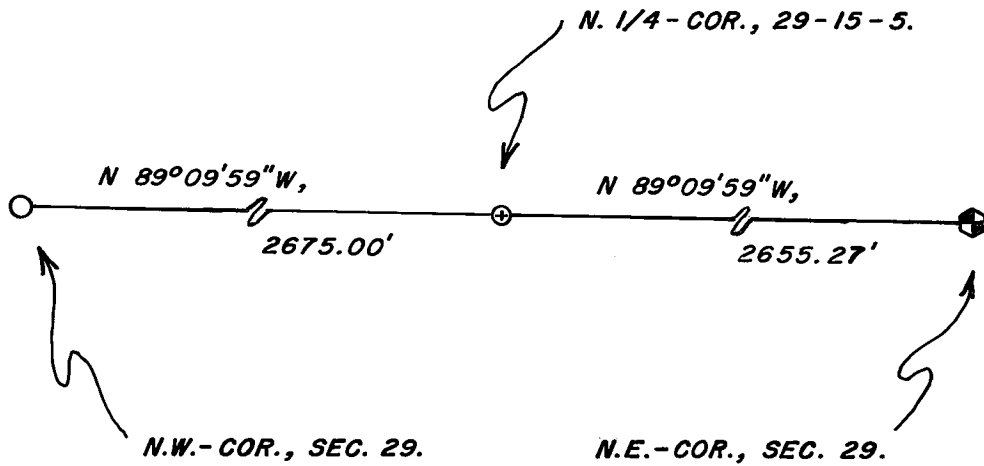
RECORD OF DURABLE WITNESS MONUMENTS

NO	DESCRIPTION	BEARING	DISTANCE
1	SET A P.K. NAIL IN S.E.-SIDE OF A 7-1/2" ASH?	S.-WESTERLY ±	39.54 FT.
2	SET A P.K. NAIL IN N.W.-SIDE OF A 7-1/2" ASPEN.	N 26°58'30"E(GRID)	44.61 FT.
3	SET A P.K. NAIL IN N.-SIDE OF A 15-1/2" HICKORY.	EAST ±	79.41 FT.
4	SET A P.K. NAIL IN N.E.-SIDE OF A 12" ASH?	S.-EASTERLY ±	9.04 FT.



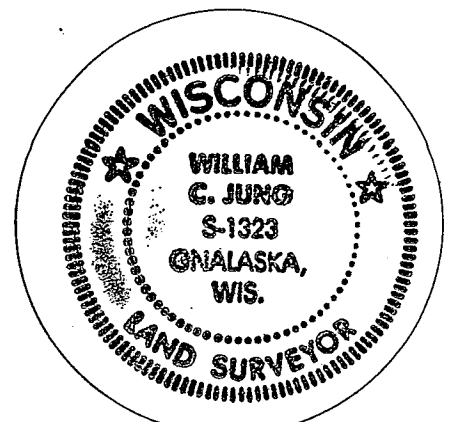
MAP SHOWING DISTANCE AND DIRECTION TO OTHER PUBLIC LAND SURVEY CORNERS USED FOR REESTABLISHING THE CORNER

(GRID BEARINGS & DISTANCES)
(GRID FACTOR = 0.999898977)



I, WILLIAM C. JUNG, COUNTY SURVEYOR
HEREBY CERTIFY THAT THE CORNER LOCATION SHOWN ON THIS RECORD WAS DETERMINED BY ME OR UNDER MY DIRECTION AND CONTROL AND THAT THIS U. S. PUBLIC LAND SURVEY MONUMENT RECORD IS CORRECT AND COMPLETE TO THE BEST OF MY KNOWLEDGE AND BELIEF.

William C. Jung 7/9/01
Signature Date



Seal