

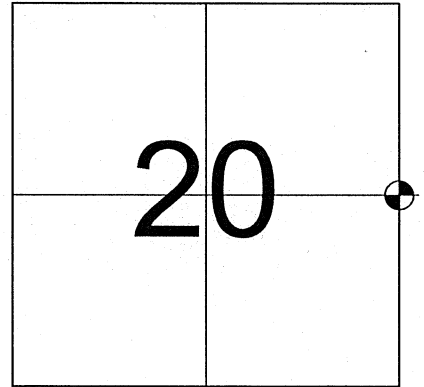
US PUBLIC LAND SURVEY MONUMENT RECORD- ADDENDUM  
 TIE SHEET ADDENDUM-21505202000 (LA CROSSE COUNTY INDEX 96A)

2020-62

SECTION 20 T. 15 N., R. 5 W. TOWN OF WASHINGTON  
 LA CROSSE COUNTY, WI.

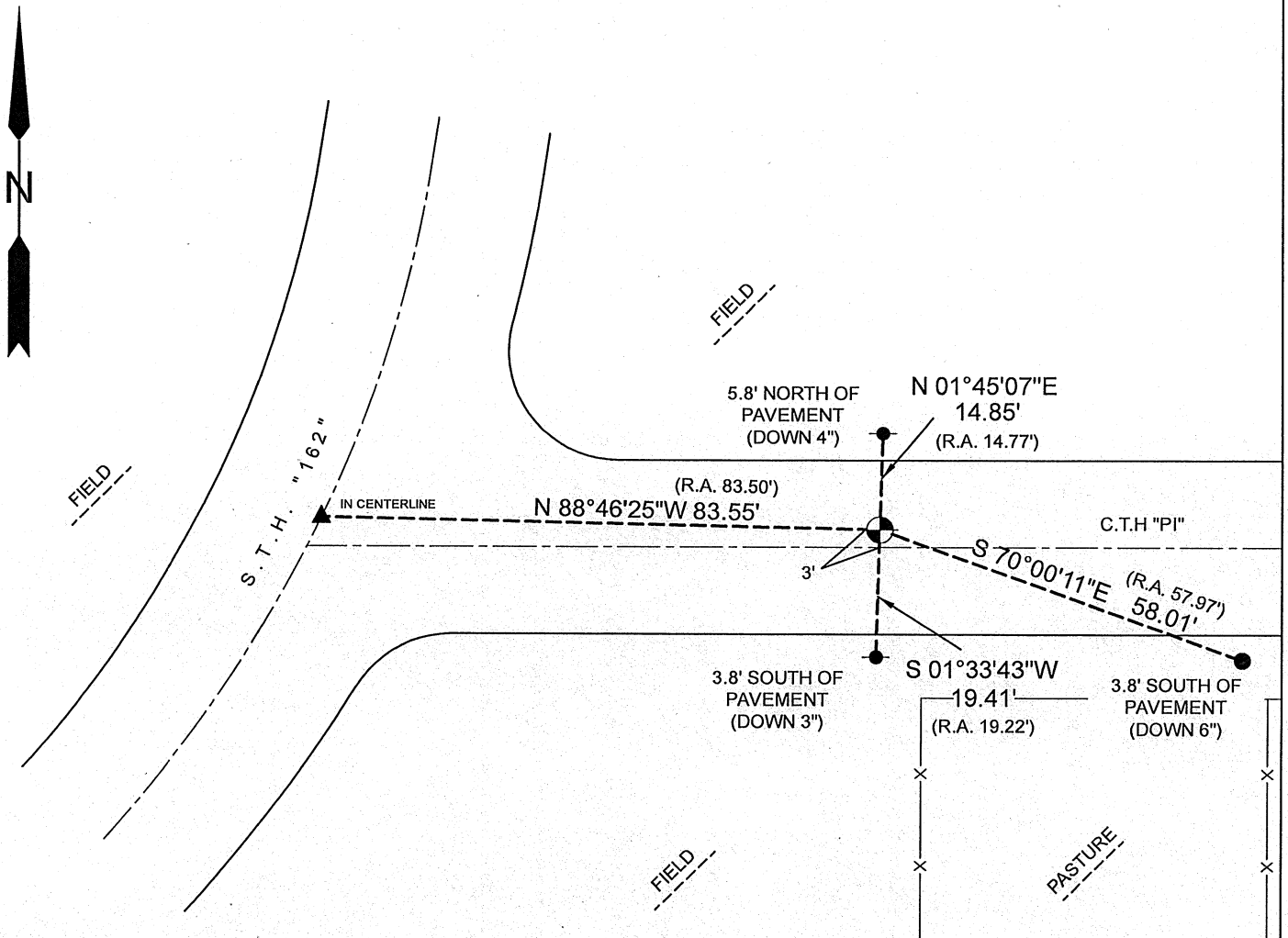
WISCONSIN COORDINATE SYSTEM

DATUM: SPC- WI SOUTH NAD83(91)  
 NORTH: 643,634.468'  
 EAST: 1,706,800.167'  
 ELEVATION: 1,314.21'  
 TYPE OF MONUMENT: Set 5" Bernsten Nail  
 CREW: COREY HUGHES, BRYAN MEYER  
 DATE: October 1, 2020



LOCATION OF LANDMARK

**October 1st, 2020-** Bryan Meyer and I performed maintenance on this corner after road construction was completed for CTH PI. The 3/4" iron bar had been removed during construction. I set a 5" Bernsten nail at the previous location of the iron bar and found all ties as shown.



LEGEND

- SET 5" BERNSTEN NAIL
- FOUND 1-5/8" O.D. IRON PIPE
- FOUND 1" O.D. IRON PIPE
- ▲ FOUND P.K. NAIL



*Corey Hughes*  
 Corey M. Hughes

*10-8-2020*  
 Date

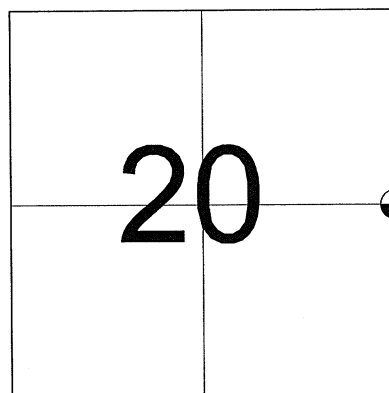
I, Corey M. Hughes, Hereby certify that the corner location shown on this record was determined by me or under my direction and control and that this U.S. Public Land Survey Monument Record Addendum is correct and complete to the best of my knowledge and belief.

CORNER ID:  
 21505202000

# MAINTENANCE- PUBLIC LAND SURVEY MONUMENT RECORD

## TIE SHEET UPDATE-21505202000 (LA CROSSE COUNTY INDEX 96A)

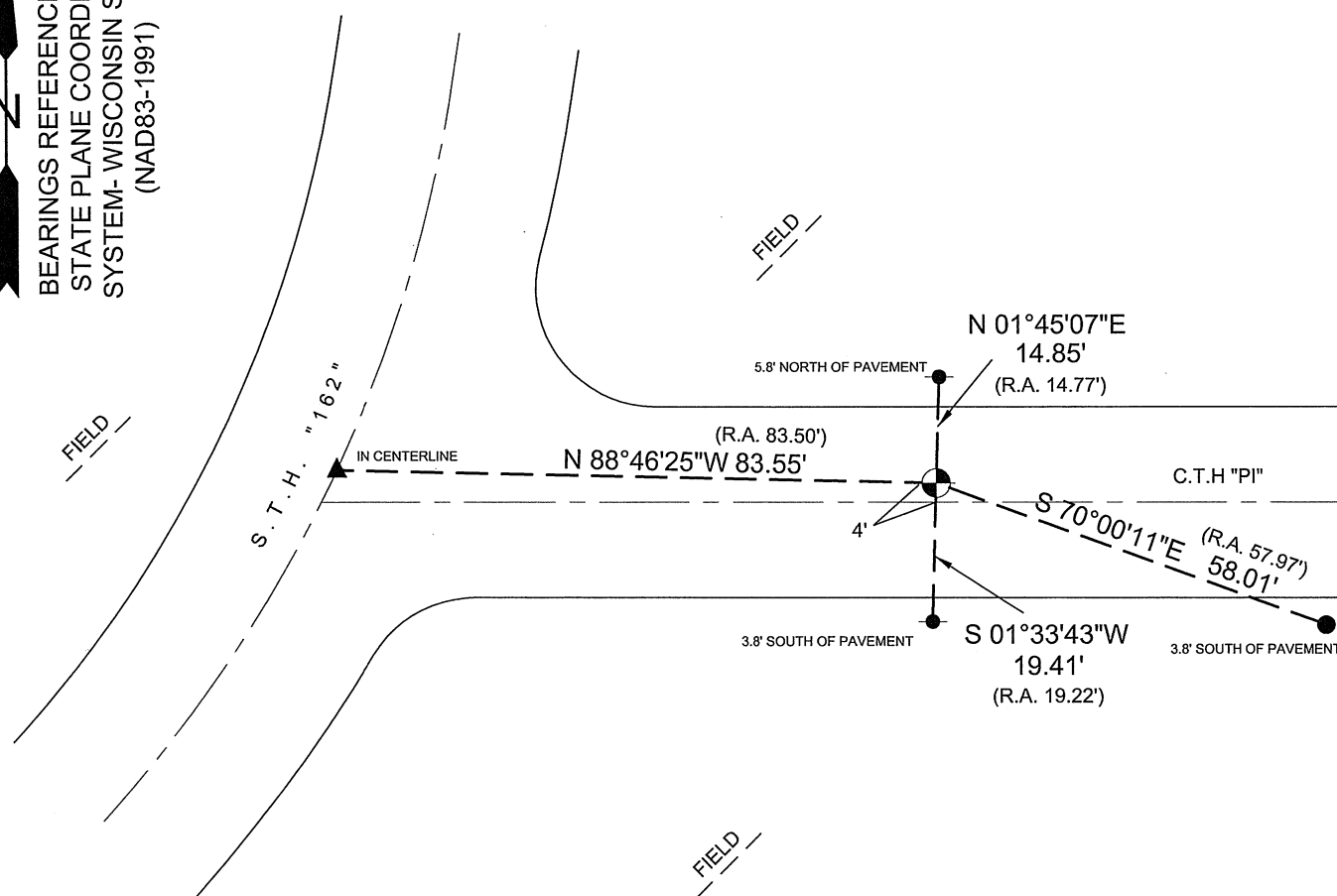
I performed maintenance work on this corner initially on September 18, 2012. I found the top of the bar bent over (probably by a snow plow). The bottom portion of the bar was straight. I spun the bent bar around, removed it and replaced it with a new 3/4"x 30" round iron bar and drove it down 1" below the surface of the road. I found all four of Jung's ties in place and holding securely. The distance to each checked well. I set a sign and post 42'± Southeast of the corner facing Northwesterly. The sign is 3' West of a power pole.



LOCATION OF LANDMARK

John Krage and I performed maintenance work on this corner again on April 13, 2016 and found the 3/4" iron bar in place. We found all four ties in place and remeasured the ties as shown.

BEARINGS REFERENCED TO  
STATE PLANE COORDINATE  
SYSTEM- WISCONSIN SOUTH  
(NAD83-1991)



**LEGEND**

- FOUND 3/4" IRON BAR
- FOUND 1-5/8" O.D. IRON PIPE
- FOUND 1" O.D. IRON PIPE
- ▲ FOUND P.K. NAIL



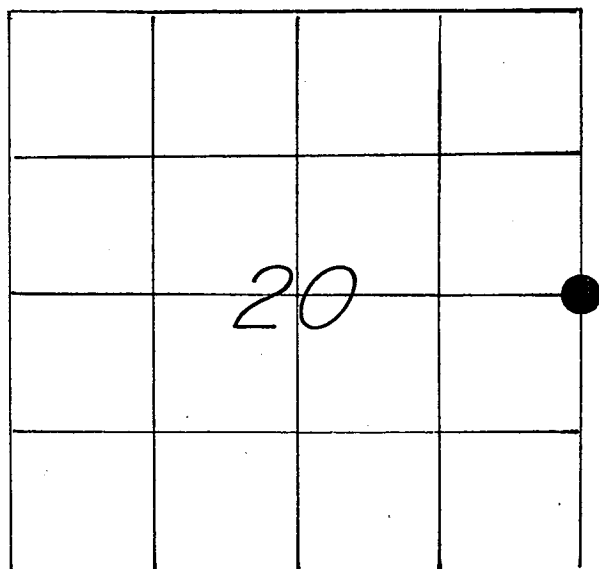
*Bryan H. Meyer*  
 \_\_\_\_\_  
 Bryan Meyer  
 La Crosse County Surveyor

*1/12/2018*  
 \_\_\_\_\_  
 Date

## U. S. PUBLIC LAND SURVEY MONUMENT RECORD

SECTION 20 T 15 N, R 5 W, TOWN OF WASHINGTON

LA CROSSE COUNTY



LOCATION OF LANDMARK

Crew: WILLIAM C. JUNG  
 PETER F. FOLLANSBEE  
 Date: 4/24/1997

WISCONSIN COORDINATE SYSTEM

North

East

Theta Angle

Horiz. Order

Vert. Order

TYPE OF LANDMARK

3/4" x 30" Iron Bar.

BEARINGS ARE REFERENCED TO

Assumed North

Describe any record evidence, monument evidence, testimonial evidence or any other material evidence you considered and whether the monument was found or restored through acceptance of an obliterated evidence location.

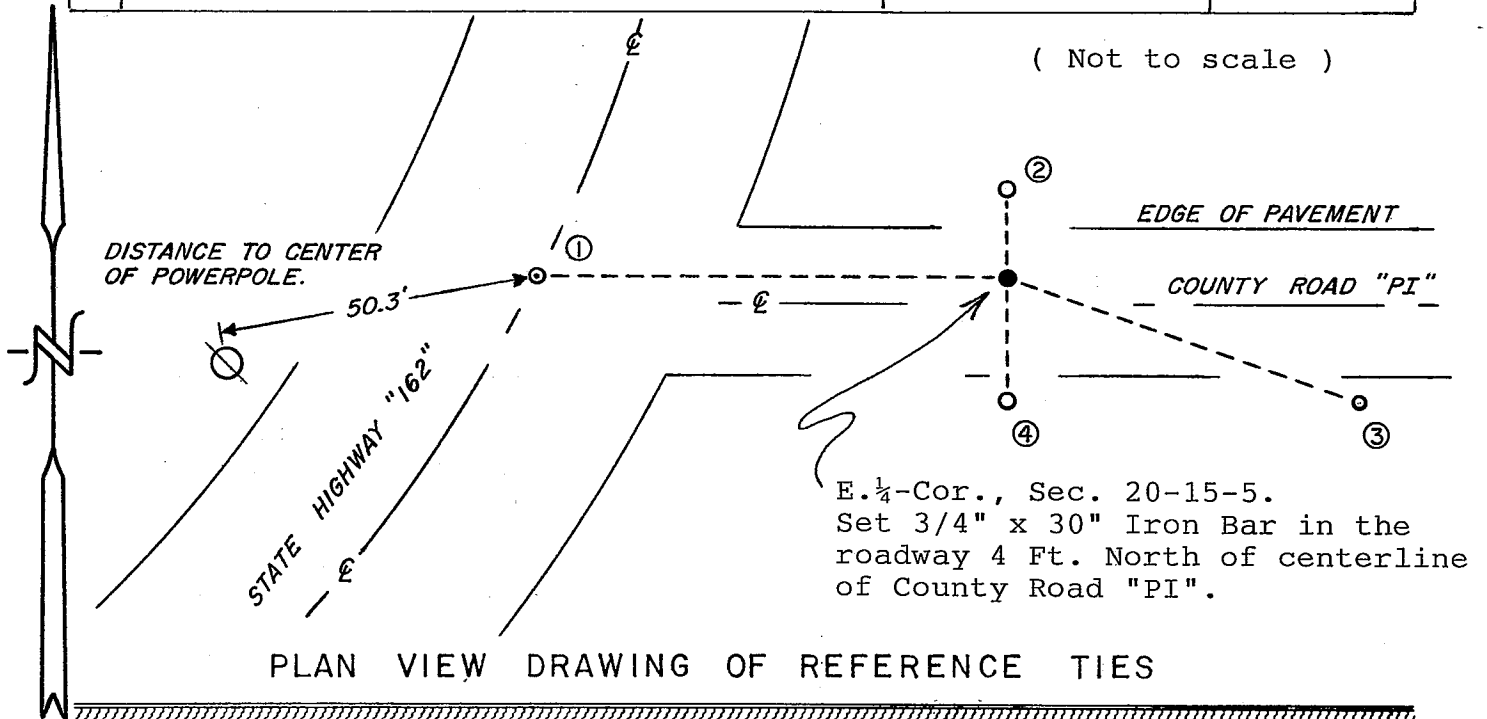
I set the corner by single proportionate measurement as per law.

Describe or show any material discrepancy between the location of the restored corner and that of the corner previously restored or reestablished.

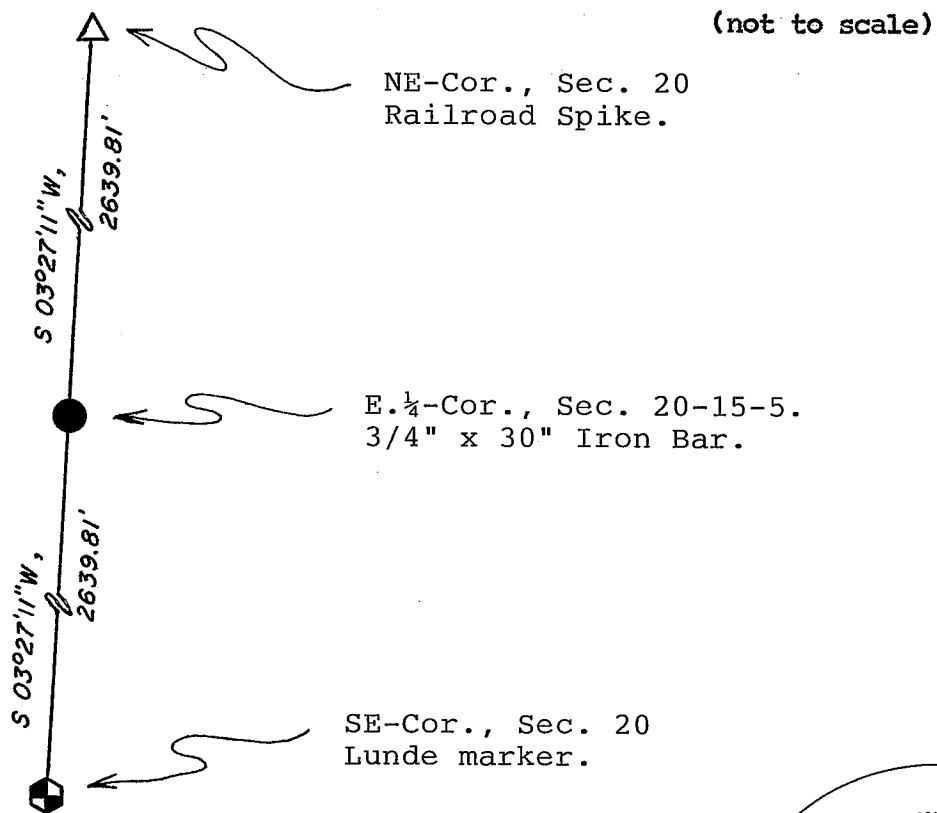
None Known.

RECORD OF DURABLE WITNESS MONUMENTS

NO	DESCRIPTION	BEARING	DISTANCE
1	Set a P.K. Nail in centerline Hwy 162	West $\pm$	83.50 Ft.
2	Set 1-5/16" x 23" I.P. 5.8' N. of pav't	North $\pm$	14.77 Ft.
3	Set 1" x 30" I.P. 3.8' S. of pav't	Southeasterly $\pm$	57.97 Ft.
4	Set 1-5/16" x 24" I.P. 3.8' S. of pav't	South $\pm$	19.22 Ft.

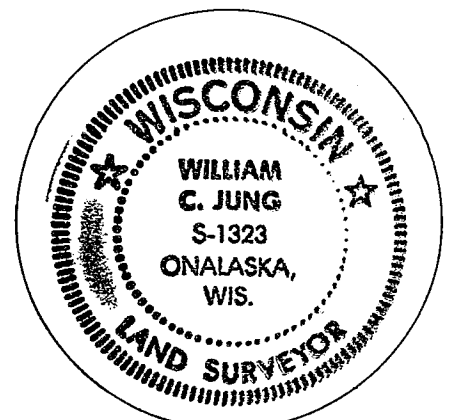


MAP SHOWING DISTANCE AND DIRECTION TO OTHER PUBLIC LAND SURVEY CORNERS USED FOR REESTABLISHING THE CORNER



I, William C. Jung, County Surveyor  
 HEREBY CERTIFY THAT THE CORNER LOCATION SHOWN ON THIS RECORD  
 WAS DETERMINED BY ME OR UNDER MY DIRECTION AND CONTROL AND  
 THAT THIS U. S. PUBLIC LAND SURVEY MONUMENT RECORD IS CORRECT  
 AND COMPLETE TO THE BEST OF MY KNOWLEDGE AND BELIEF.

William C. Jung 6/13/97  
 Signature Date



Seal