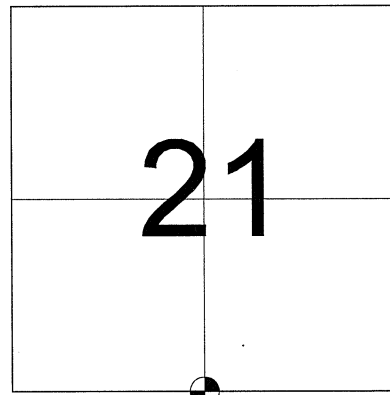
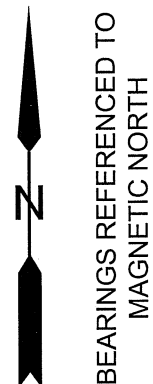


MAINTENANCE- PUBLIC LAND SURVEY MONUMENT RECORD TIE SHEET UPDATE-21505210020 (LA CROSSE COUNTY INDEX 112A)

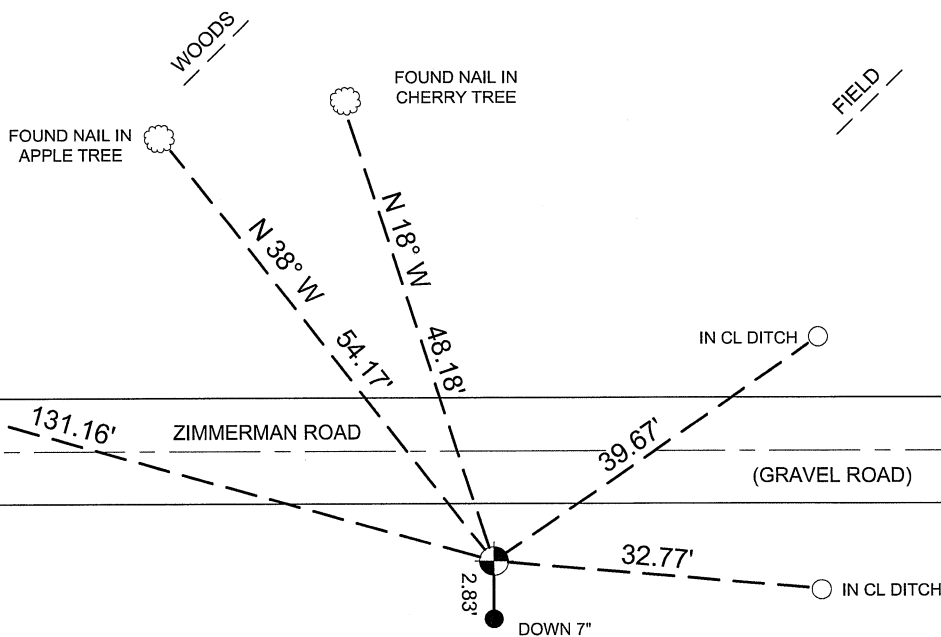
Pete Follansbee and I performed maintenance work on this corner on September 18, 2012. We found the Lunde marker of record at the corner. We found 3 of W. Jung's ties and established 3 new ties as shown below.



LOCATION OF LANDMARK

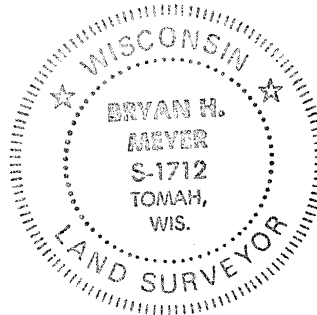



0.8' S OF NORTH
END OF CULVERT



LEGEND

- LUNDE MARKER
- TREE AS DESCRIBED
- FOUND 1" IRON PIPE
- SET 3/4"X24" IRON BAR (1.50lbs/ft)
- SET DRILL HOLE




 Bryan H. Meyer
 La Crosse County Surveyor

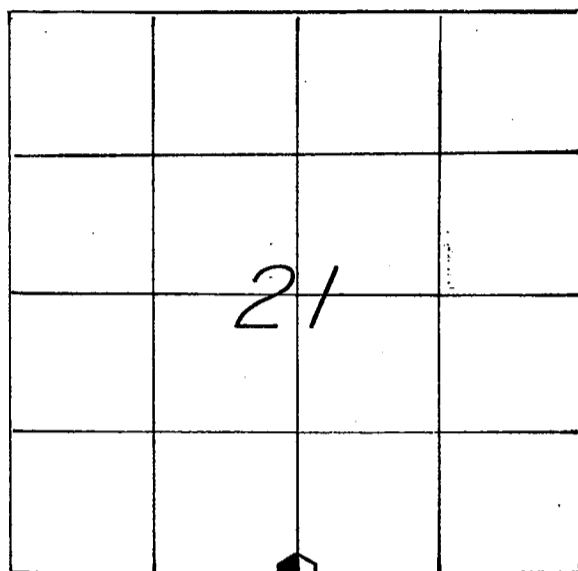
9/21/2012
 Date

21505210020

U. S. PUBLIC LAND SURVEY MONUMENT RECORD

SECTION 21 T 15 N, R 5 W, TOWN OF WASHINGTON

LA CROSSE COUNTY



LOCATION OF LANDMARK

Crew: WILLIAM C. JUNG
 PETER F. FOLLANSBEE
 Date: 4/15/1997

WISCONSIN COORDINATE SYSTEM

North

East

Theta Angle

Horiz. Order

Vert. Order

TYPE OF LANDMARK

Brass cap Lunde marker.

BEARINGS ARE REFERENCED TO

Assumed North.

Describe any record evidence, monument evidence, testimonial evidence or any other material evidence you considered and whether the monument was found or restored through acceptance of an obliterated evidence location.

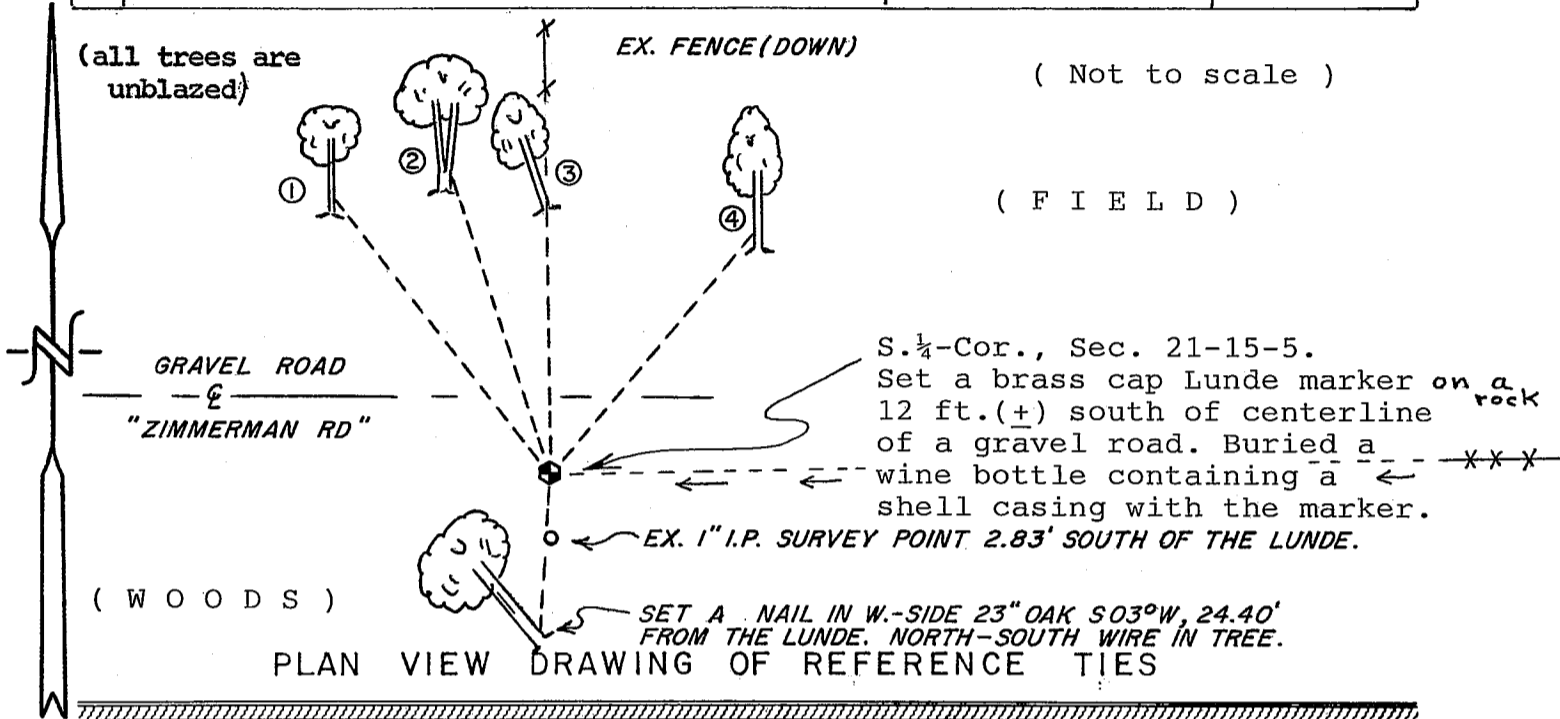
I accepted the occupied corner as the best available evidence of the original government corner position and monumented it with a Lunde marker.

Describe or show any material discrepancy between the location of the restored corner and that of the corner previously restored or reestablished.

None Known.

RECORD OF DURABLE WITNESS MONUMENTS
MAGNETIC

NO	DESCRIPTION	BEARING	DISTANCE
1	Set nail in NE-side 7½" tree	N 38° W	54.17 Ft.
2	Set nail in NE-side 9½" double Cherry	N 18° W	48.18 Ft.
3	Set nail in E.-side 13" Elm	N 0.5° W	42.98 Ft.
4	Set nail in NW-side 14" Aspen	N 40° E	49.19 Ft.

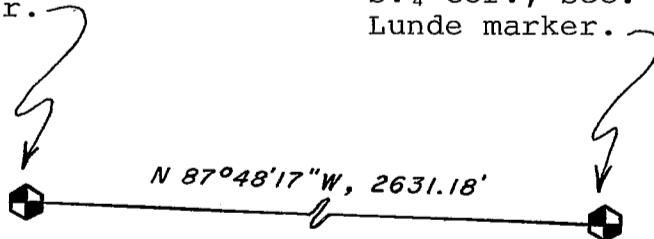


MAP SHOWING DISTANCE AND DIRECTION TO OTHER PUBLIC LAND SURVEY CORNERS USED FOR REESTABLISHING THE CORNER

(not to scale)

SW-Cor., Sec. 21.
Lunde marker.

S. ¼-Cor., Sec. 21.
Lunde marker.



I, William C. Jung, County Surveyor
HEREBY CERTIFY THAT THE CORNER LOCATION SHOWN ON THIS RECORD
WAS DETERMINED BY ME OR UNDER MY DIRECTION AND CONTROL AND
THAT THIS U. S. PUBLIC LAND SURVEY MONUMENT RECORD IS CORRECT
AND COMPLETE TO THE BEST OF MY KNOWLEDGE AND BELIEF.

William C. Jung 6/13/97
Signature Date



Seal