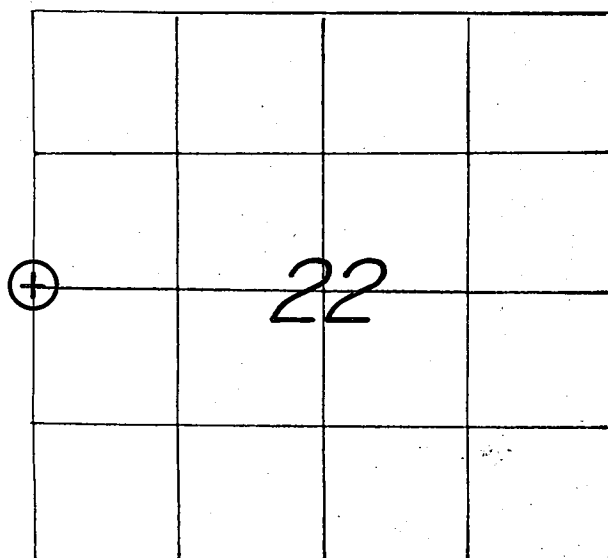


21505212000

U. S. PUBLIC LAND SURVEY MONUMENT RECORD

SECTION 22 T 15 N, R 5 W, TOWN OF WASHINGTON

LA CROSSE COUNTY



LOCATION OF LANDMARK

CREW: **WILLIAM C. JUNG**
PETER F. FOLLANSBEE
 DATE: **01/12/2006**

WISCONSIN COORDINATE SYSTEM

North

East

Theta Angle

Horiz. Order

Vert. Order

TYPE OF LANDMARK

IRON BAR WITH AN ALUMINUM CAP.

BEARINGS ARE REFERENCED TO

ASSUMED NORTH AS PER SECTION DATA.

Describe any record evidence, monument evidence, testimonial evidence or any other material evidence you considered and whether the monument was found or restored through acceptance of an obliterated evidence location.

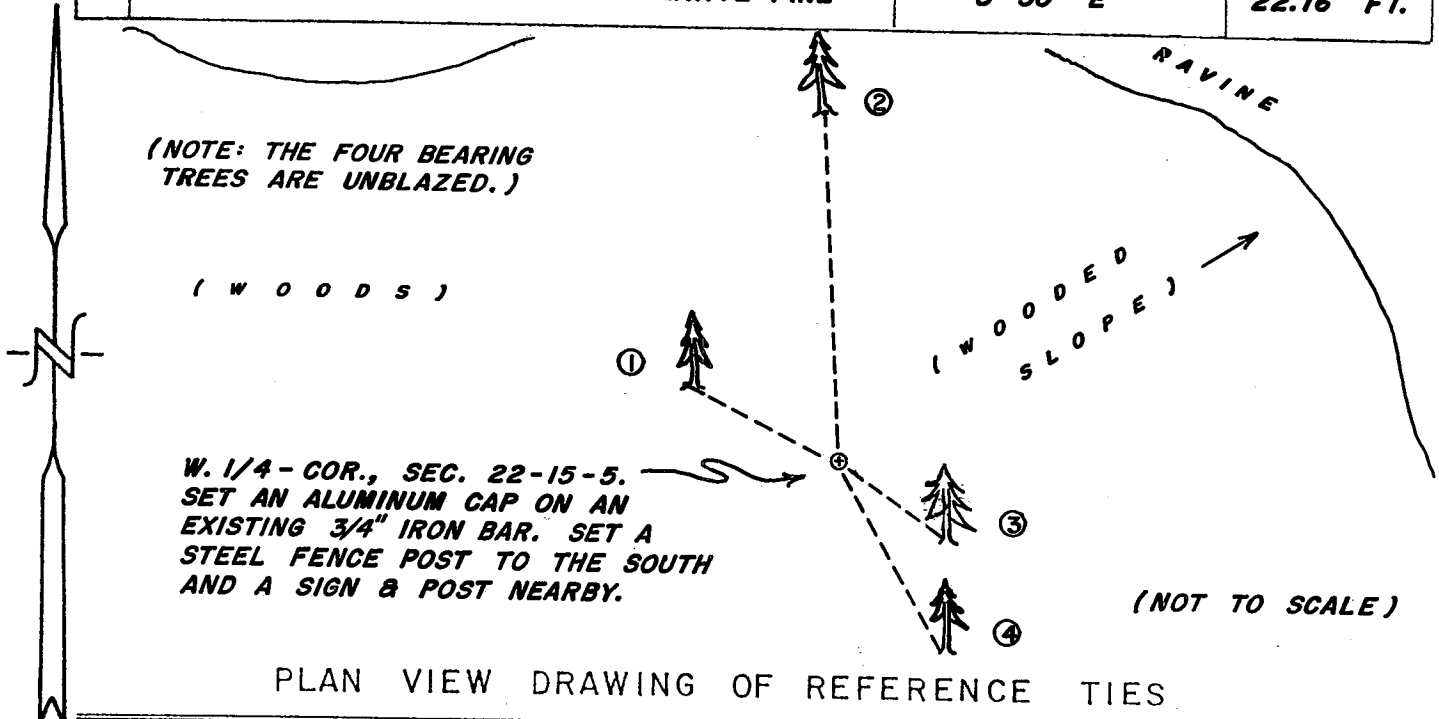
Chris Fechner set an iron bar at this corner in 1999. He set it on line with the old line fence to the South and equidistant between the section corners. At that time he discussed the placing of the corner with me. I agreed with this method. I found the bar, capped it, and tied it off. The corner falls about 78 to 79 feet or so North of the downed fence corner.

Describe or show any material discrepancy between the location of the restored corner and that of the corner previously restored or reestablished.

NONE KNOWN.

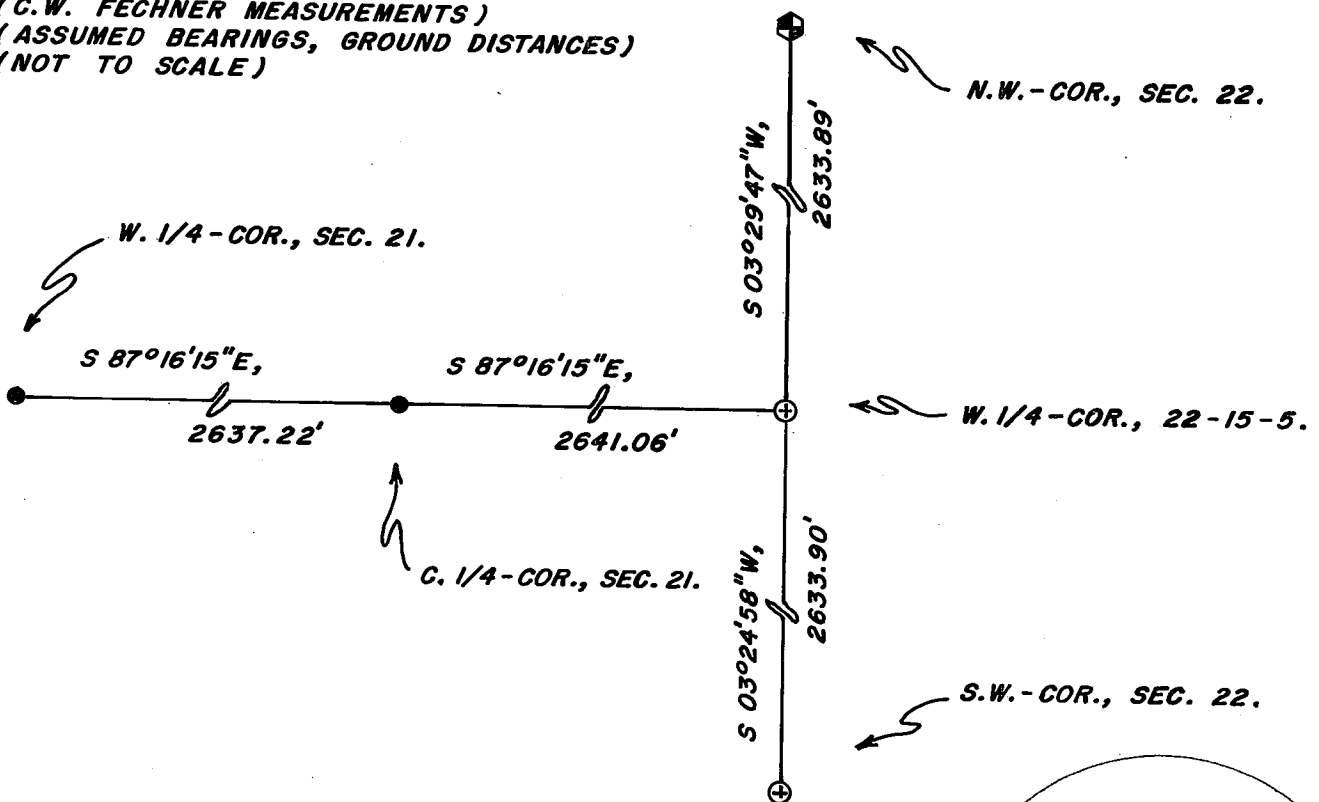
RECORD OF DURABLE WITNESS MONUMENTS

NO	DESCRIPTION	MAGNETIC	
		BEARING	DISTANCE
1	SET A NAIL IN S.W.-SIDE OF A 5" TAMARACK	N 63° W	SLOPE=17.69'
2	SET A NAIL IN S.-SIDE OF A 17" TAMARACK	N 03° W	36.27 FT.
3	SET A NAIL IN S.W.-SIDE OF A 26-1/2" WHITE PINE	S 55° E	13.26 FT.
4	SET A NAIL IN S.W.-SIDE OF A 10" WHITE PINE	S 30° E	22.16 FT.



MAP SHOWING DISTANCE AND DIRECTION TO OTHER PUBLIC LAND SURVEY CORNERS USED FOR REESTABLISHING THE CORNER

(C.W. FECHNER MEASUREMENTS)
(ASSUMED BEARINGS, GROUND DISTANCES)
(NOT TO SCALE)



I, WILLIAM C. JUNG, COUNTY SURVEYOR
HEREBY CERTIFY THAT THE CORNER LOCATION SHOWN ON THIS RECORD WAS DETERMINED BY ME OR UNDER MY DIRECTION AND CONTROL AND THAT THIS U. S. PUBLIC LAND SURVEY MONUMENT RECORD IS CORRECT AND COMPLETE TO THE BEST OF MY KNOWLEDGE AND BELIEF.

William C. Jung
Signature

1/16/06
Date



Seal