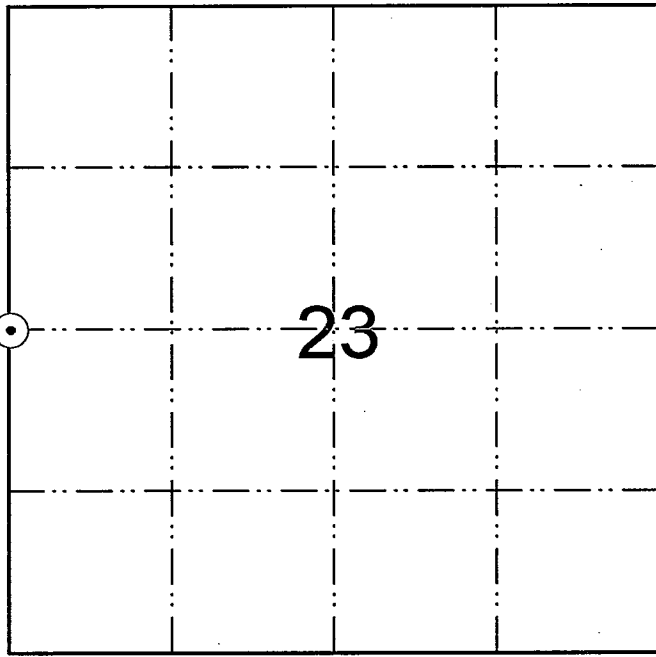


LA CROSSE COUNTY, WISCONSIN U. S. PUBLIC LAND SURVEY MONUMENT RECORD

WEST ¼ CORNER, SECTION 23, T15N, R5W, TOWN OF WASHINGTON



WISCONSIN COORDINATE SYSTEM

NORTH: 643,502.196

EAST: 1717386.769

TYPE OF MONUMENT: Set 3/4" round iron bar with aluminum cap

BEARINGS REFERENCED TO: Magnetic North

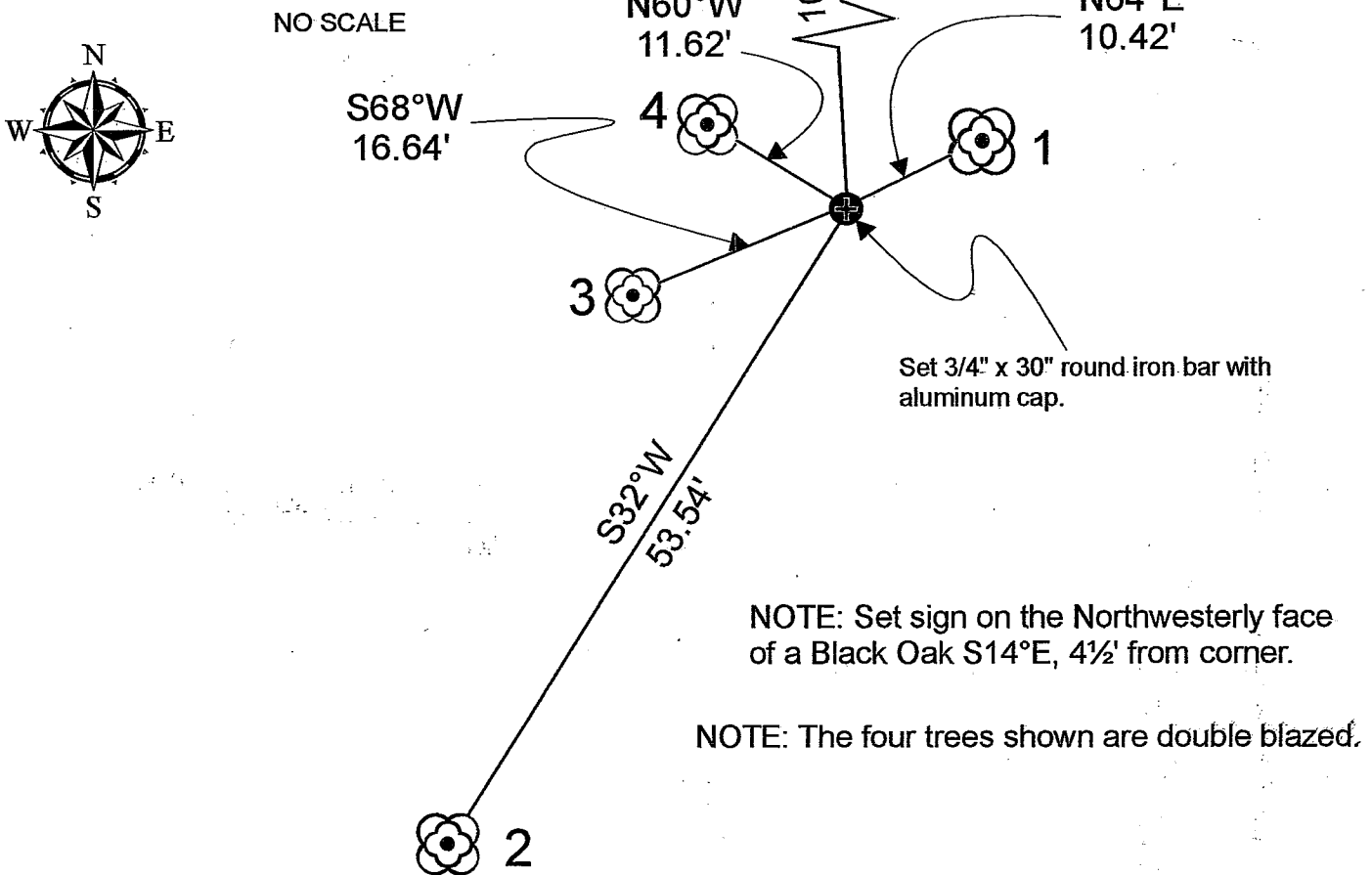
CREW: Bryan Meyer and Pete Follansbee

DATE: July 6, 2009

WEATHER: Mostly Sunny, 85°±

⊙ = LOCATION OF LANDMARK

PLAN VIEW OF REFERENCE TIES:



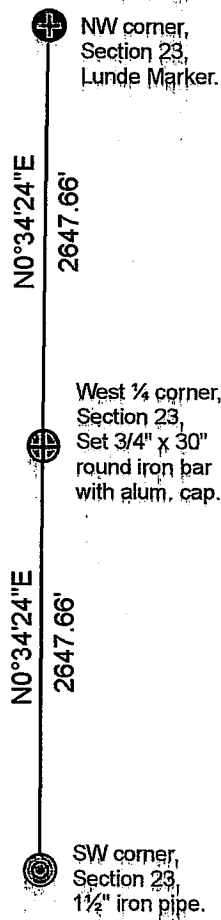
NOTE: Set sign on the Northwesterly face of a Black Oak S14°E, 4½' from corner.

NOTE: The four trees shown are double blazed.

WITNESS TIES:

- 1 = Set nail and washer in Westerly side of 20½" Black Oak
- 2 = Set nail and washer in Easterly side of 16" White Oak
- 3 = Set nail and washer in Northwest side of 13" Black Oak
- 4 = Set nail and washer in Southerly side of 15½" Red Oak
- 5 = Existing 1" iron pipe

NO SCALE
GRID BEARINGS AND DISTANCES
Grid factor = 0.9998980000



DESCRIBE ANY RECORD EVIDENCE, MONUMENT EVIDENCE, TESTIMONIAL EVIDENCE OR ANY OTHER MATERIAL EVIDENCE YOU CONSIDERED AND WHETHER THE MONUMENT WAS FOUND OR RESTORED THROUGH ACCEPTANCE OF AN OBLITERATED EVIDENCE LOCATION:

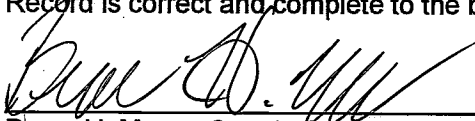
Set this corner on line and equidistant between the Northwest and Southwest corners of Section 23.

DESCRIBE OR SHOW ANY MATERIAL DISCREPANCY BETWEEN THE LOCATION OF THE RESTORED CORNER AND THAT OF THE CORNER PREVIOUSLY RESTORED OR REESTABLISHED

None.

CERTIFICATE:

I, Bryan H. Meyer, County Surveyor, hereby certify that the corner location shown on this record was determined by me or under my direction and control and that this U. S. Public Land Survey Monument Record is correct and complete to the best of my knowledge and belief.


Bryan H. Meyer, County Surveyor

2/19/2010
Date

