

US PUBLIC LAND SURVEY MONUMENT RECORD-ADDENDUM

2017-71

TIE SHEET ADDENDUM-21505230020

S 1/4 CORNER SECTION 23 T. 15 N., R. 5 W.

TOWN OF WASHINGTON

LA CROSSE COUNTY

WISCONSIN COORDINATE SYSTEM

DATUM: SPC- WI SOUTH NAD83(91)

NORTH: 640,784.989'

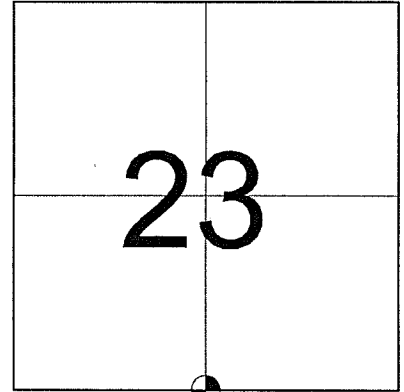
EAST: 1,719,988.598'

ELEVATION: 1250.31'

TYPE OF MONUMENT: Bernsten Monument

CREW: BRYAN MEYER, COREY HUGHES

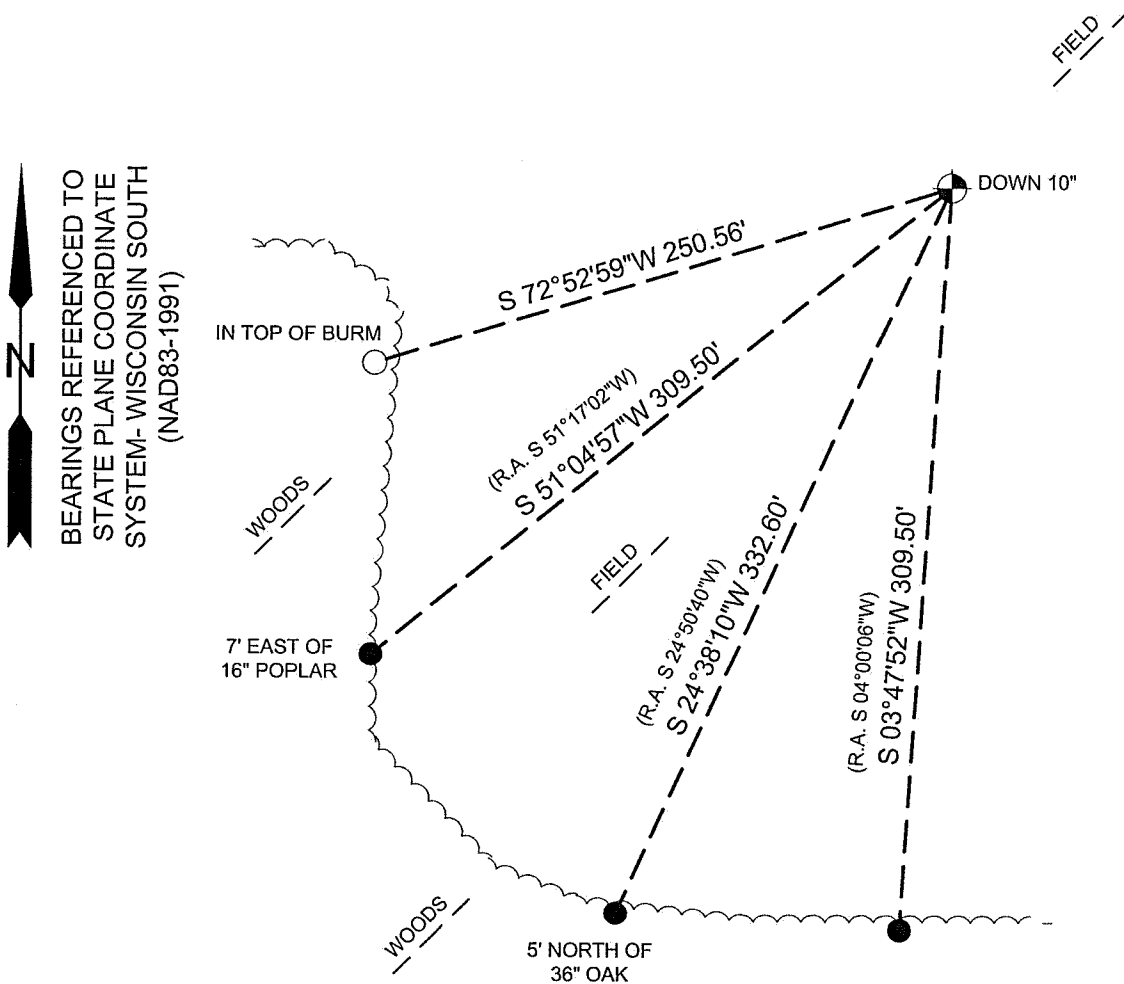
DATE: 11/14/2017



LOCATION OF LANDMARK

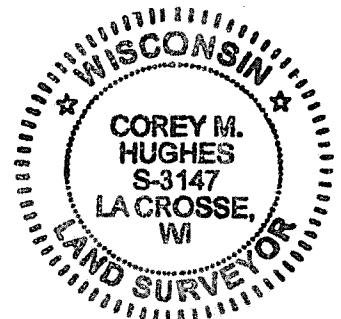
Describe what day the corner was visited, describe the condition of the recorded monument and ties. Followed by a description as to how the monument position was reestablished and if any new ties were set.

NOVEMBER 14TH, 2017- Bryan Meyer and I found the Bernsten monument of record in place and holding securely down 10" in a field. I found 3 of W. Jung's ties and set 1 new tie as shown.



LEGEND

- FOUND IRON BAR WITH ALUMINUM CAP
- SET 3/4"X18" IRON BAR WITH PLASTIC CAP
- FOUND 3/4" IRON BAR WITH PLASTIC CAP



Corey M Hughes
Corey M. Hughes

11-21-17
Date

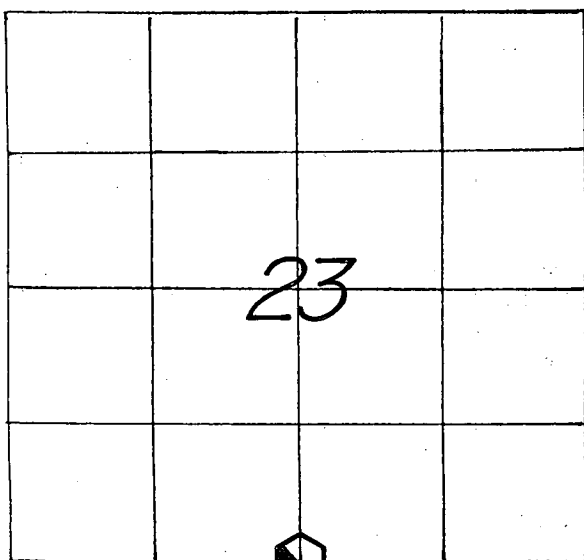
I, Corey M. Hughes, Hereby certify that the corner location shown on this record was determined by me or under my direction and control and that this U.S. Public Land Survey Monument Record Addendum is correct and complete to the best of my knowledge and belief.

ROMPORTL ID:
21505230020

U. S. PUBLIC LAND SURVEY MONUMENT RECORD

SECTION 23 T 15 N, R 5 W, TOWN OF WASHINGTON

LA CROSSE COUNTY



LOCATION OF LANDMARK

CREW: WILLIAM C. JUNG
 PETER F. FOLLANSBEE
 DATE: 6/13/2006

WISCONSIN COORDINATE SYSTEM
North
East
Theta Angle
Horiz. Order
Vert. Order

TYPE OF LANDMARK
30" ALUMINUM BERNTSEN MARKER.

BEARINGS ARE REFERENCED TO
ASSUMED NORTH AS PER SECTION DATA.

Describe any record evidence, monument evidence, testimonial evidence or any other material evidence you considered and whether the monument was found or restored through acceptance of an obliterated evidence location.

K. Don Pederson set a spike at this corner at the "single proportionate" position. I agree with the way that he set the corner. I removed his spike and replaced it with 30" Berntsen, down 10" in a field.

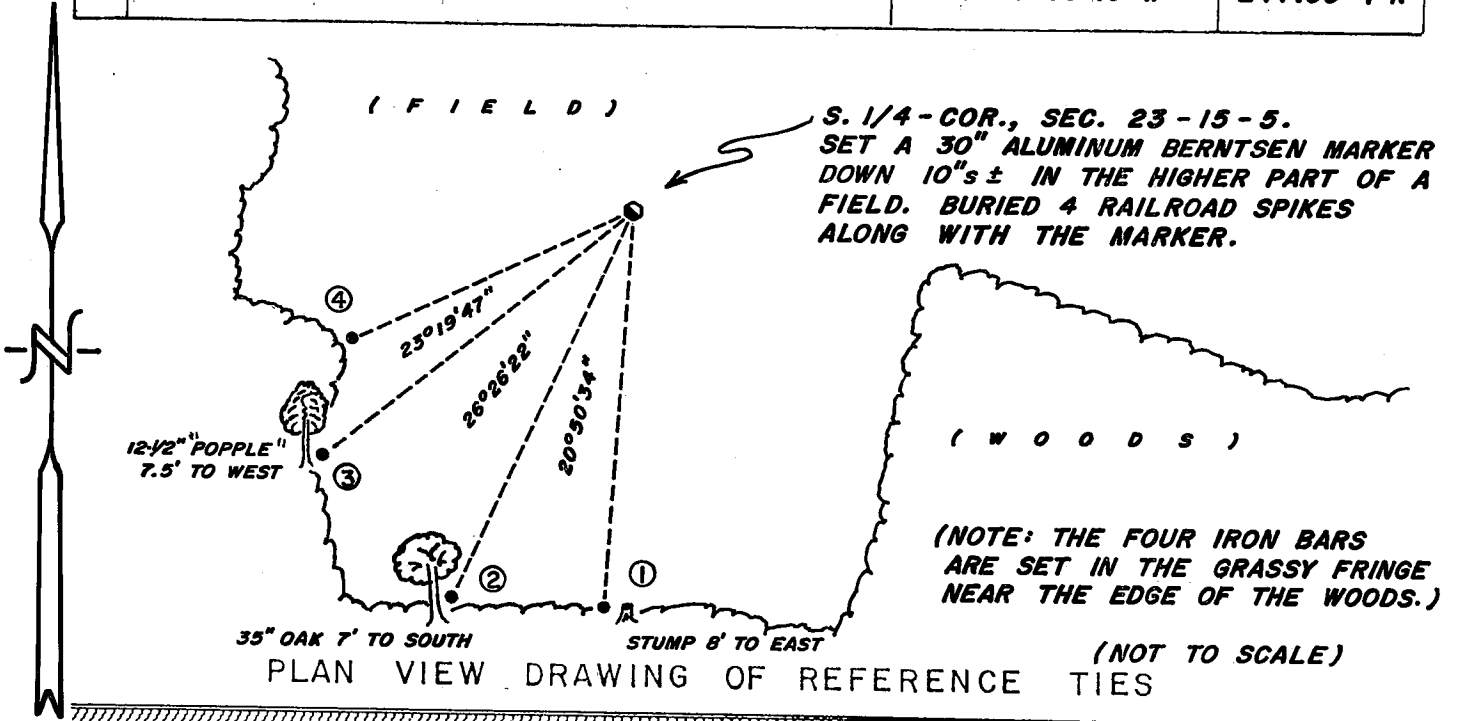
Describe or show any material discrepancy between the location of the restored corner and that of the corner previously restored or reestablished.

This may or may not fit Bob Chalsma's 1/4 corner position on his 1983 survey.

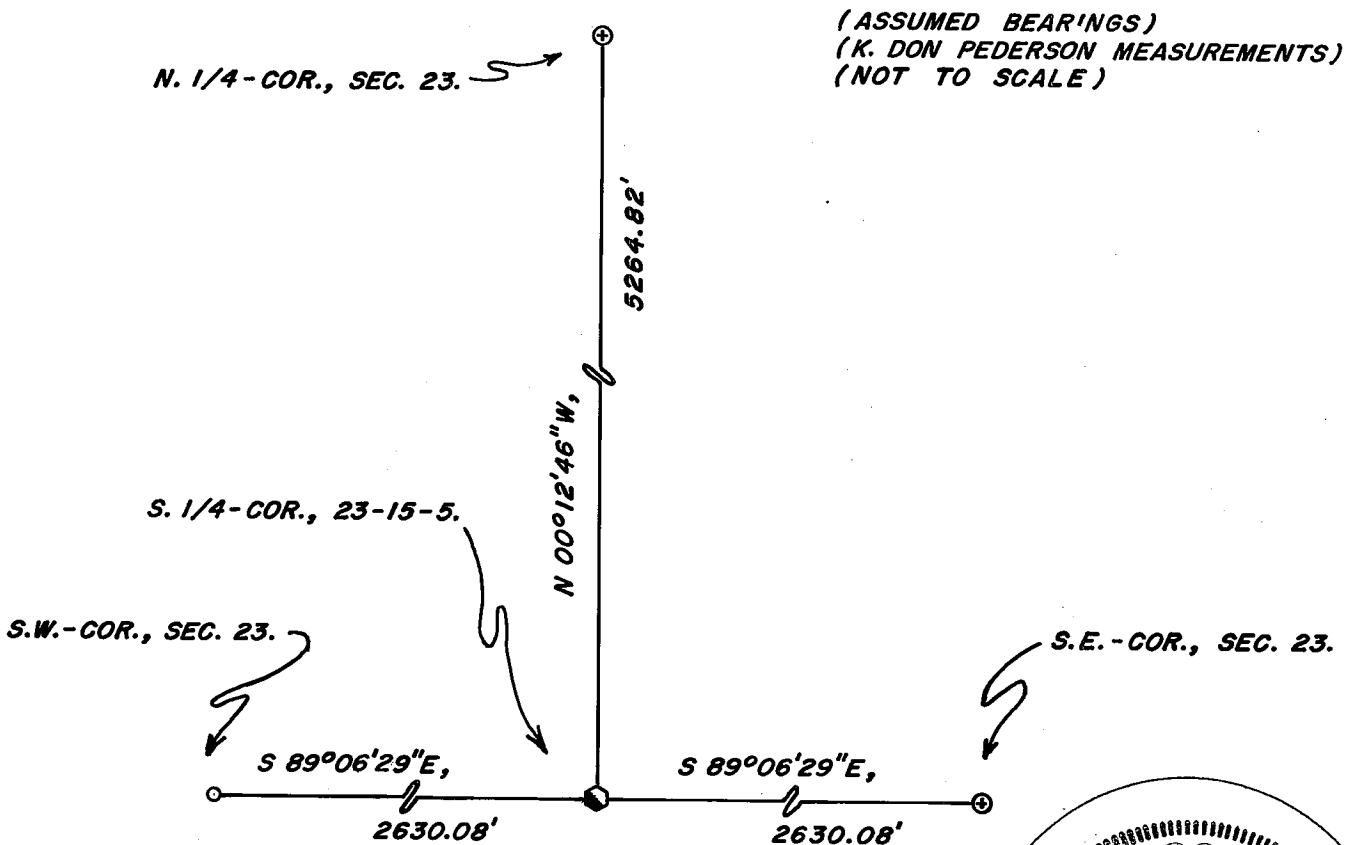
RECORD OF DURABLE WITNESS MONUMENTS

ASSUMED(MAG.) BEARINGS

NO	DESCRIPTION	BEARING	DISTANCE
1	SET A 3/4" x 30" IRON BAR WITH A RED PLASTIC CAP	S 04°00'06"W	309.50 FT.
2	SET A 3/4" x 30" IRON BAR WITH A RED PLASTIC CAP	S 24°50'40"W	332.60 FT.
3	SET A 3/4" x 30" IRON BAR WITH A RED PLASTIC CAP	S 51°17'02"W	309.50 FT.
4	SET A 3/4" x 30" IRON BAR WITH A RED PLASTIC CAP	S 74°36'49"W	241.09 FT.

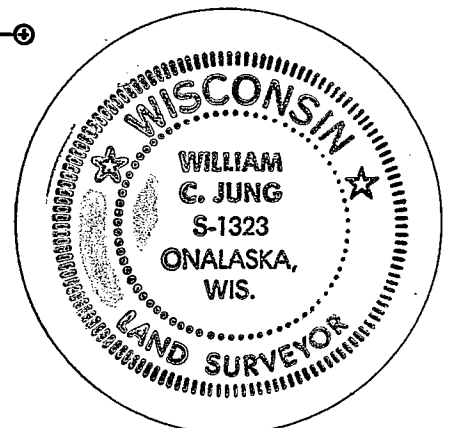


MAP SHOWING DISTANCE AND DIRECTION TO OTHER PUBLIC LAND SURVEY CORNERS USED FOR REESTABLISHING THE CORNER



I, WILLIAM C. JUNG, COUNTY SURVEYOR
HEREBY CERTIFY THAT THE CORNER LOCATION SHOWN ON THIS RECORD WAS DETERMINED BY ME OR UNDER MY DIRECTION AND CONTROL AND THAT THIS U. S. PUBLIC LAND SURVEY MONUMENT RECORD IS CORRECT AND COMPLETE TO THE BEST OF MY KNOWLEDGE AND BELIEF.

William C. Jung 7/6/06
Signature Date



Seal