

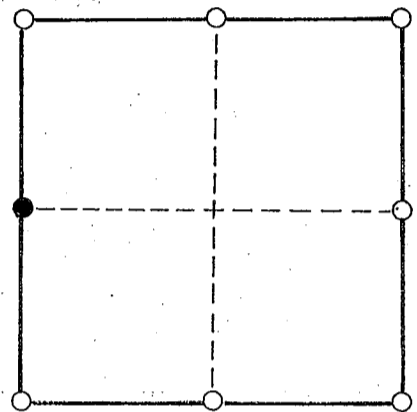
21505232000

NO. 102

CERTIFIED LAND CORNER

I do hereby certify that on the 14th day of September, 2001, I found (evidence) (~~no evidence~~) of the W/4 corner of Section 24, T 15 N, R 5 W, Fourth Principal Meridian, and I re-established said corner according to the Wisconsin Statutes as shown and described hereon.

SECTION 24



● = CORNER LOCATION

T 15 N R 5 W

TOWN OF: Washington

LaCrosse County



*September 17, 2001*

Witnesses to corner location:

Zachariah P. Dechant

Gary L. Dechant *G.L.D.*

HISTORY OF CORNER:

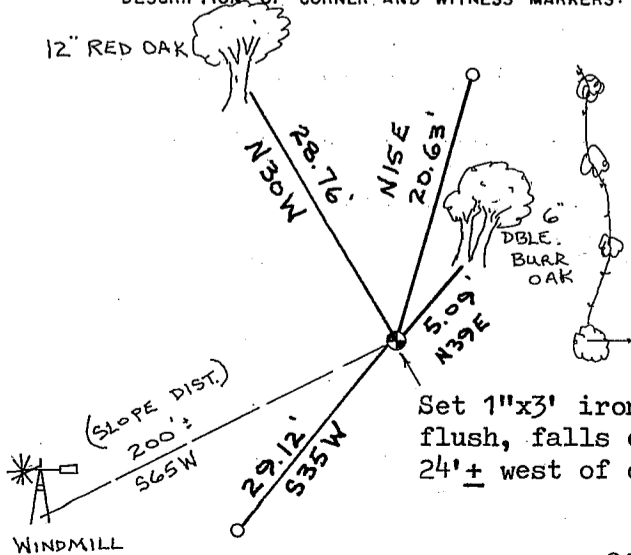
A surveyor by the name of Bliss was probably here, date unknown to me, as he set the C/4 corner of Section 24. (probably late 1800's)

DESCRIPTION OF CORNER EVIDENCE FOUND:

Found no signs of evidence of an actual corner or any remains of bearing trees. Set the W/4 corner on line with the NW and SW section corners and on line with the fence to the east. The C/4 corner was set by intersecting quarter lines, falling right in the existing east-west fence. The SE corner of the W/2-SW/4-NE/4 falls 2' north of the existing fence corner. The SE corner of the SW/4-NW/4 falls 10' north of fence corner in the middle of a dug way, but on line with the north-south fence within a couple of feet. The NW corner of the SW/4-NW/4 lands

DESCRIPTION OF CORNER AND WITNESS MARKERS:

25' west of fence corner, but only 2' north of said fence corner, supporting its north south location of the W/4 corner. I did not put much weight on the fence corner itself, because it goes north from tree to tree,



- NOTES: 1) Trees double blazed with 40d nails
2) Southerly reference pipe is 6' easterly of a 3" apple tree

Set 1"x3' iron pipe with point and cap, flush, falls on very steep slope, 24'± west of occupied fence corner.

o=Set 1"O.D.x24" reference pipe, flush.