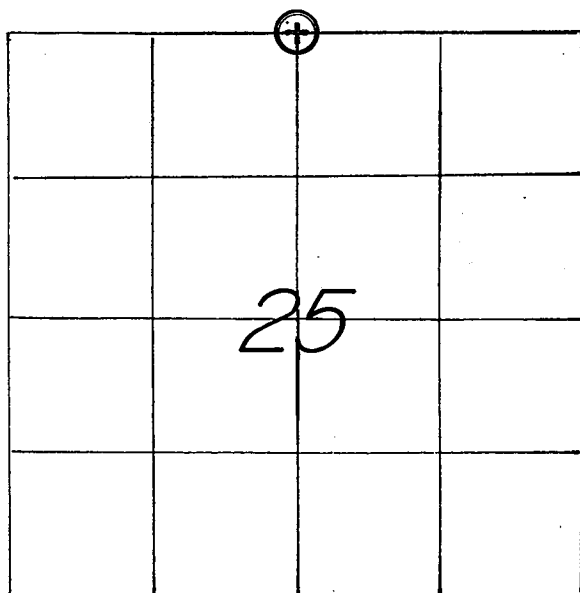


## U. S. PUBLIC LAND SURVEY MONUMENT RECORD

SECTION 25 T 15 N, R 5 W, TOWN OF WASHINGTON

LA CROSSE COUNTY



LOCATION OF LANDMARK

CREW: **WILLIAM C. JUNG****PETER F. FOLLANSBEE**DATE: **8/17/2001**

## WISCONSIN COORDINATE SYSTEM

North **640,683.208**East **1,725,253.543**

Theta Angle

Horiz. Order

Vert. Order

DATUM: **1983('91)**

TYPE OF LANDMARK

**3/4" x 30" IRON BAR WITH ALUMINUM CAP.**

BEARINGS ARE REFERENCED TO

**GRID NORTH AS PER SECTION DATA.**

Describe any record evidence, monument evidence, testimonial evidence or any other material evidence you considered and whether the monument was found or restored through acceptance of an obliterated evidence location.

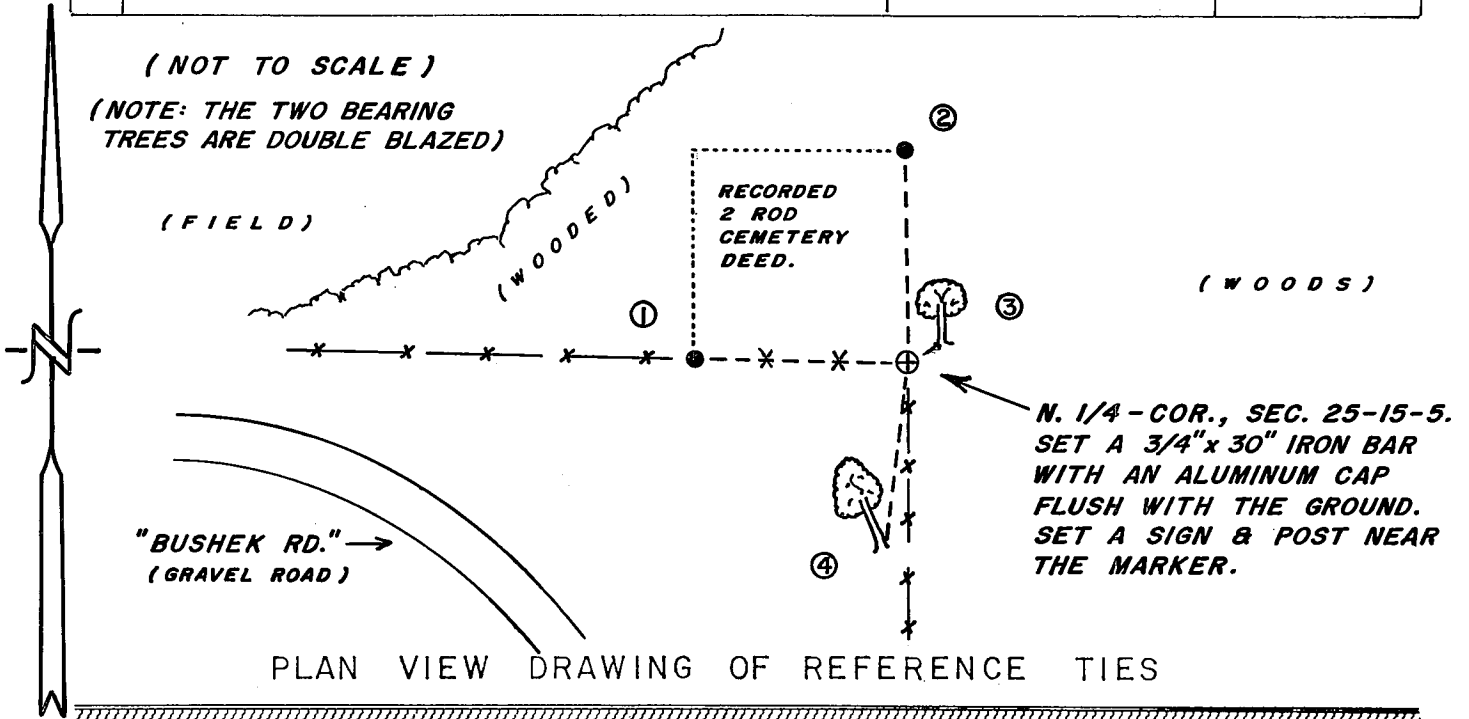
I accepted the old occupied corner as the best available evidence of the original government corner position and monumented it with an iron bar with a cap. This location is only about 1.2 feet South and 5.9 feet East of the single proportionate position.

Describe or show any material discrepancy between the location of the restored corner and that of the corner previously restored or reestablished.

**NONE KNOWN.**

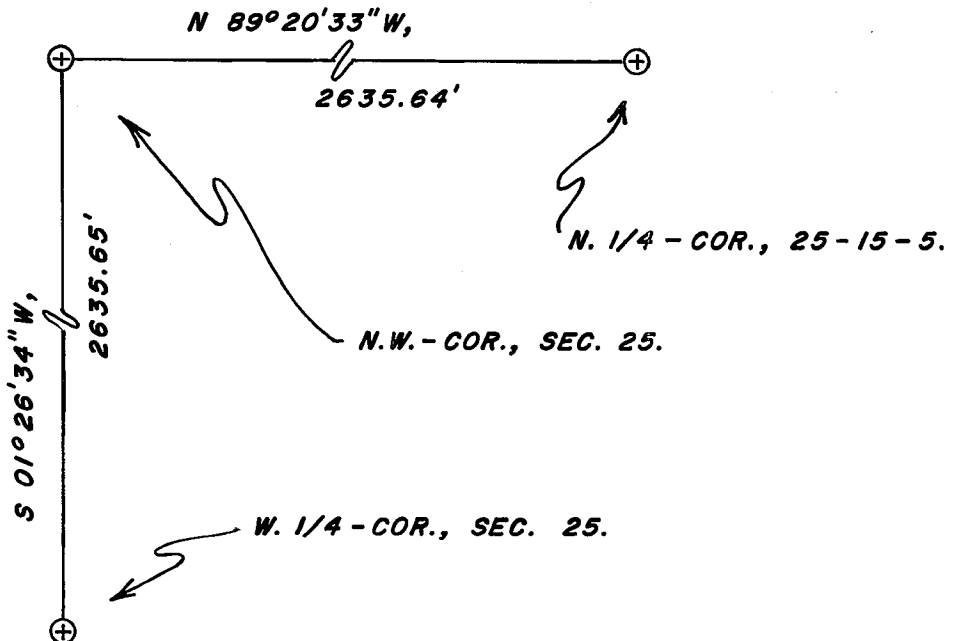
RECORD OF DURABLE WITNESS MONUMENTS  
MAGNETIC

| NO | DESCRIPTION                                    | BEARING | DISTANCE  |
|----|--|---------|-----------|
| 1  | SET A 3/4" x 30" IRON BAR WITH RED PLASTIC CAP | N 89° W | 32.98 FT. |
| 2  | SET A 3/4" x 30" IRON BAR WITH RED PLASTIC CAP | N 01° W | 33.03 FT. |
| 3  | SET A NAIL IN S.E.-SIDE OF A 15" OAK           | N 57° E | 4.98 FT.  |
| 4  | SET A NAIL IN S.E.-SIDE OF A 17" MAPLE         | S 07° W | 28.48 FT. |



MAP SHOWING DISTANCE AND DIRECTION TO OTHER PUBLIC LAND SURVEY CORNERS USED FOR REESTABLISHING THE CORNER

(GRID BEARINGS & DISTANCES)  
(GRID FACTOR: 0.999899)  
(NOT TO SCALE)



I, WILLIAM C. JUNG, COUNTY SURVEYOR  
HEREBY CERTIFY THAT THE CORNER LOCATION SHOWN ON THIS RECORD WAS DETERMINED BY ME OR UNDER MY DIRECTION AND CONTROL AND THAT THIS U. S. PUBLIC LAND SURVEY MONUMENT RECORD IS CORRECT AND COMPLETE TO THE BEST OF MY KNOWLEDGE AND BELIEF.

William C. Jung 1/30/02  
Signature Date

