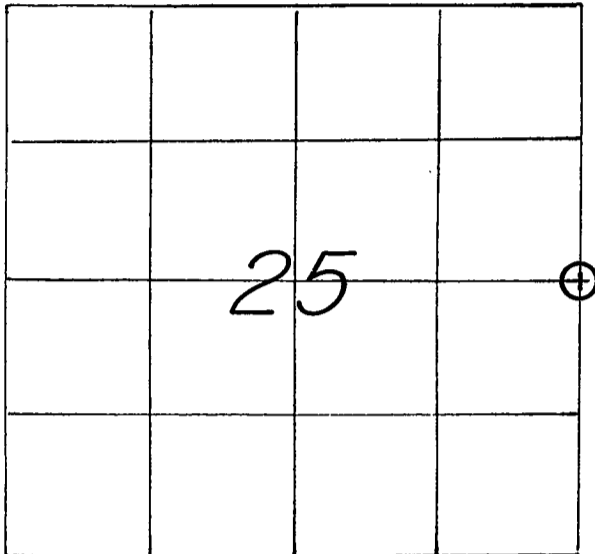


21505252000

U. S. PUBLIC LAND SURVEY MONUMENT RECORD

SECTION 25 T 15 N, R 5 W, TOWN OF WASHINGTON

LA CROSSE COUNTY



WISCONSIN COORDINATE SYSTEM
North
East
Theta Angle
Horiz. Order
Vert. Order
TYPE OF LANDMARK
IRON BAR WITH ALUMINUM CAP
BEARINGS ARE REFERENCED TO
ASSUMED NORTH

LOCATION OF LANDMARK

CREW: WILLIAM C. JUNG
 PETER F. FOLLANSBEE
 DATE: 1/22/1998

Describe any record evidence, monument evidence, testimonial evidence or any other material evidence you considered and whether the monument was found or restored through acceptance of an obliterated evidence location.

After a close inspection of the fences, I set an iron bar with a cap at the old occupied corner. I accepted this corner as the best available evidence of the original government corner position.

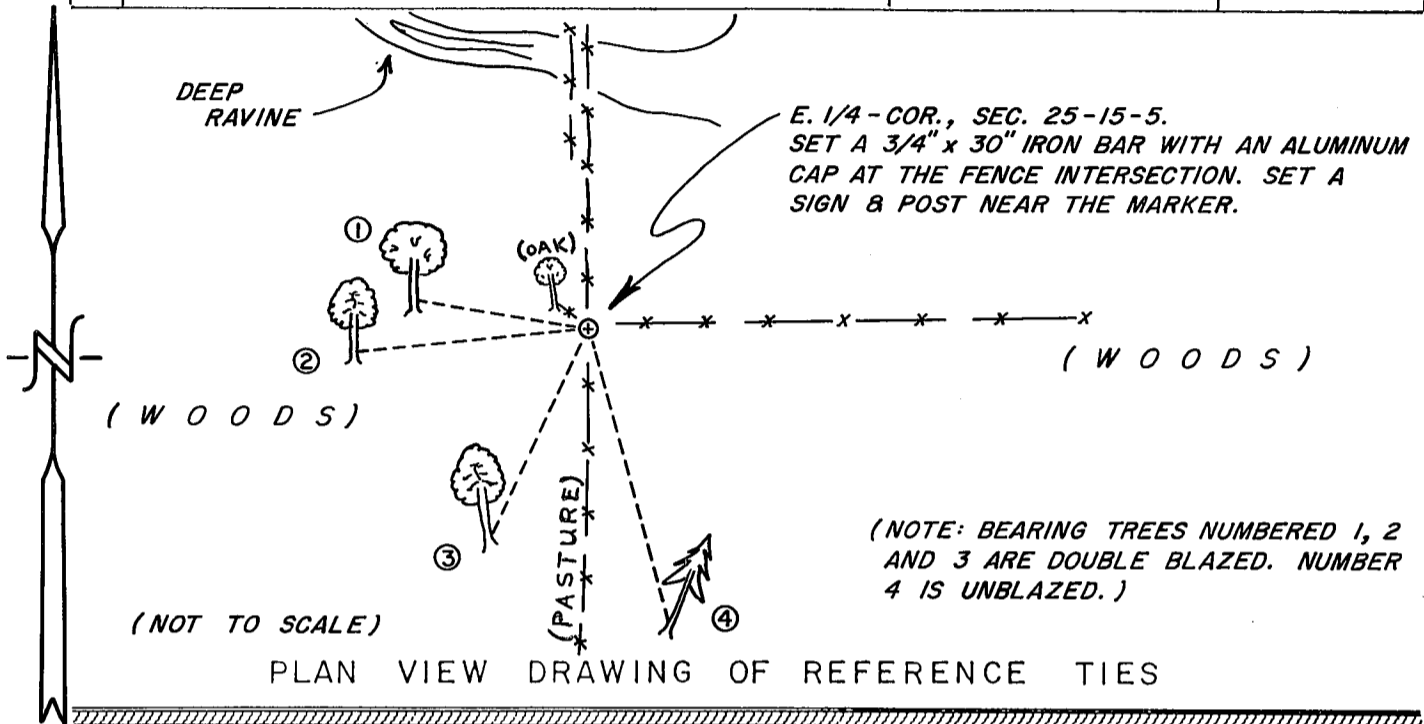
Describe or show any material discrepancy between the location of the restored corner and that of the corner previously restored or reestablished.

None known.

RECORD OF DURABLE WITNESS MONUMENTS

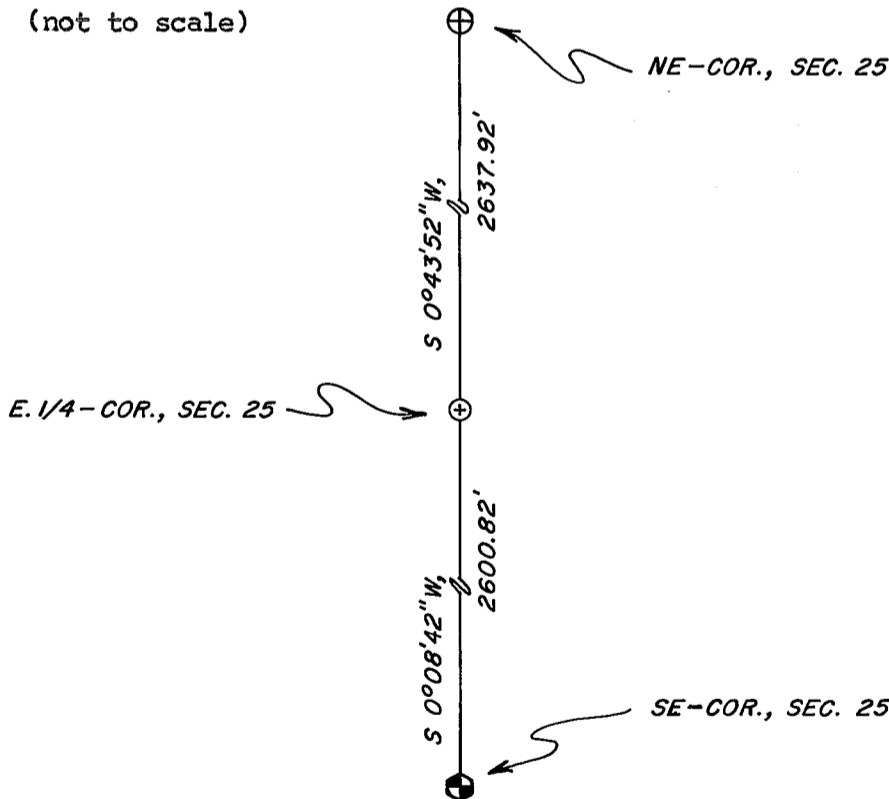
MAGNETIC

NO	DESCRIPTION	BEARING	DISTANCE
1	SET A NAIL IN THE SW-SIDE 9" WHITE OAK	N 81° W	17.79 FT.
2	SET A P.K. NAIL IN THE S-SIDE 9" HICKORY	S 84° W	24.09 FT.
3	SET A NAIL IN THE SE-SIDE 10" HICKORY	S 25° W	23.54 FT.
4	SET A NAIL IN THE SW-SIDE 10-1/2" EVERGREEN (SCOTCH ?)	S 15° E	31.44 FT.



MAP SHOWING DISTANCE AND DIRECTION TO OTHER PUBLIC LAND SURVEY CORNERS USED FOR REESTABLISHING THE CORNER

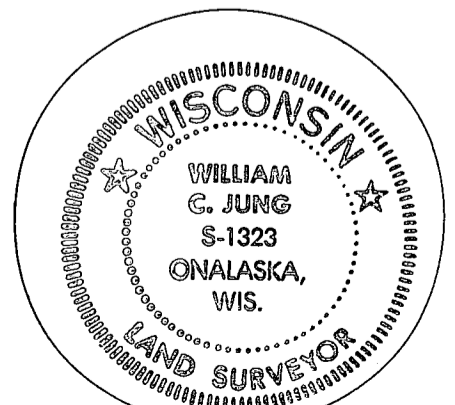
(not to scale)



I, WILLIAM C. JUNG, COUNTY SURVEYOR
 HEREBY CERTIFY THAT THE CORNER LOCATION SHOWN ON THIS RECORD
 WAS DETERMINED BY ME OR UNDER MY DIRECTION AND CONTROL AND
 THAT THIS U. S. PUBLIC LAND SURVEY MONUMENT RECORD IS CORRECT
 AND COMPLETE TO THE BEST OF MY KNOWLEDGE AND BELIEF.

William C. Jung
 Signature

March 10, 1998
 Date



Seal