

# US PUBLIC LAND SURVEY MONUMENT RECORD-ADDENDUM

TIE SHEET ADDENDUM-21505270000

SE CORNER SECTION 27 T. 15 N., R. 5 W.  
LA CROSSE COUNTY

TOWN OF WASHINGTON

WISCONSIN COORDINATE SYSTEM

DATUM: SPC- WI SOUTH NAD83(91)

NORTH: 635,533.69'

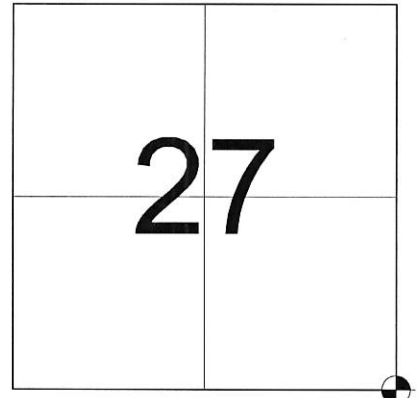
EAST: 1,717,210.99'

ELEVATION:

TYPE OF MONUMENT: BROKEN LUNDE MONUMENT

CREW: BRYAN MEYER, COREY HUGHES

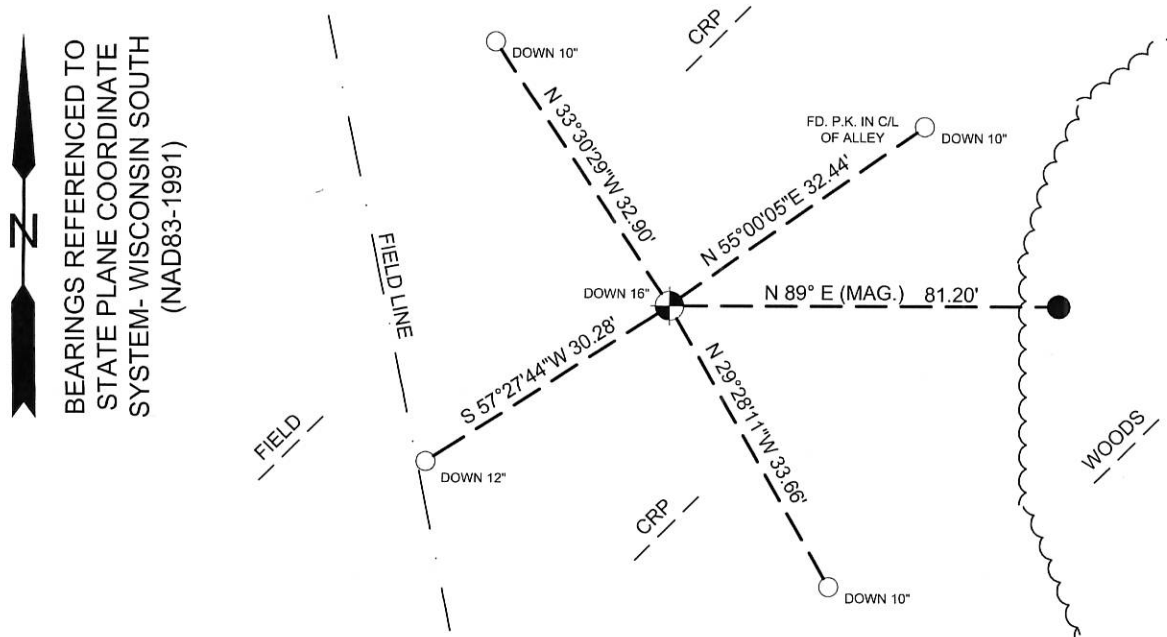
DATE: 8/30/2017



LOCATION OF LANDMARK

Describe what day the corner was visited, describe the condition of the recorded monument and ties. Followed by a description as to how the monument position was reestablished and if any new ties were set.

**AUGUST 30, 2017-** It seems as though W. Jung broke the Lunde monument in the process of setting the corner and he set the top half of the monument at the corner and buried the bottom half south of the corner. Bryan Meyer and I found the Lunde monument of record at the corner down 16" and found the bottom half down 13" and +- 0.3' south of the corner. I set 4 new ties as shown.



BEARINGS REFERENCED TO  
 STATE PLANE COORDINATE  
 SYSTEM- WISCONSIN SOUTH  
 (NAD83-1991)

LEGEND

- FOUND LUNDE MONUMENT
- SET 3/4"X18" IRON BAR (WEIGHING 1.50LBS./FT) WITH PLASTIC CAP
- FOUND 1" O.D. IRON PIPE



*Corey Hughes*  
 Corey M. Hughes

10-3-17  
 Date

I, Corey M. Hughes, Hereby certify that the corner location shown on this record was determined by me or under my direction and control and that this U.S. Public Land Survey Monument Record Addendum is correct and complete to the best of my knowledge and belief.

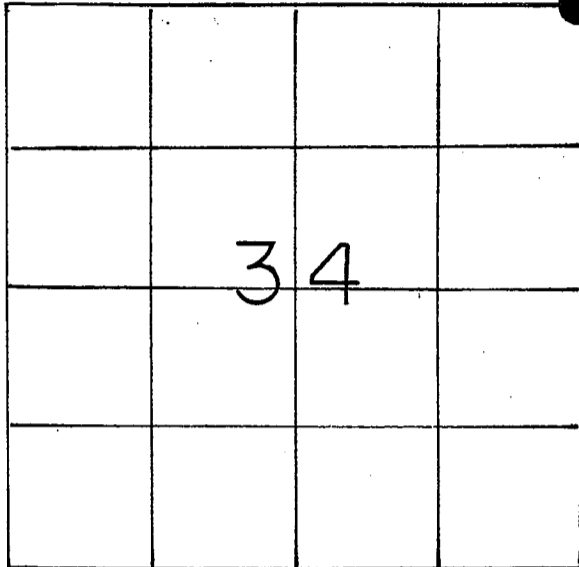
ROMPORTL ID:  
21505270000

21505270000

## U. S. PUBLIC LAND SURVEY MONUMENT RECORD

SECTION 34 T 15 N, R 5 W, TOWN OF Washington

LA CROSSE COUNTY



LOCATION OF LANDMARK

WISCONSIN COORDINATE SYSTEM
North
East
Theta Angle
Horiz. Order
Vert. Order
TYPE OF LANDMARK
Brass Capped Lunde Marker
BEARINGS ARE REFERENCED TO
Assumed

Crew: William C. Jung

Peter F. Follansbee

Date: 2/9/88 and 6/27/88

Describe any record evidence, monument evidence, testimonial evidence or any other material evidence you considered and whether the monument was found or restored through acceptance of an obliterated evidence location.

I set the corner at a computed location by placing the corner on line with the remains of an old downed line fence to the East and at a distance from the N1/4 Corner of Section 35 equal to double the distance from the N1/4 Corner of Section 35 to the N1/16NW of Section 35. This 1/2 mile is long but evidence found throughout Section 34 would indicate that the original surveyors were measuring  
 \*\*\*  
 long.

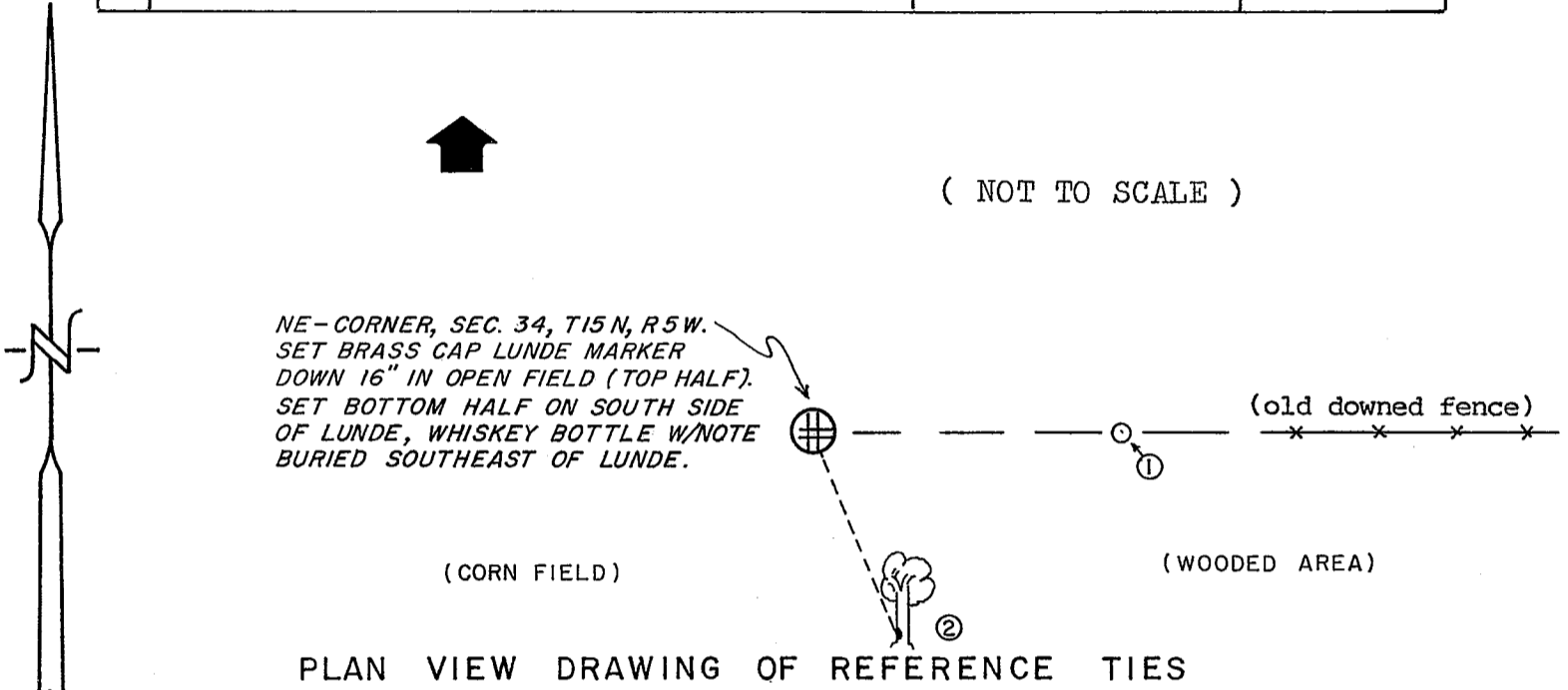
Describe or show any material discrepancy between the location of the restored corner and that of the corner previously restored or reestablished.

None known.

\*\*\* (additional note) The final bearing along the East line of Section 34 fits the old line fence along the East line of the SE1/4 very well.

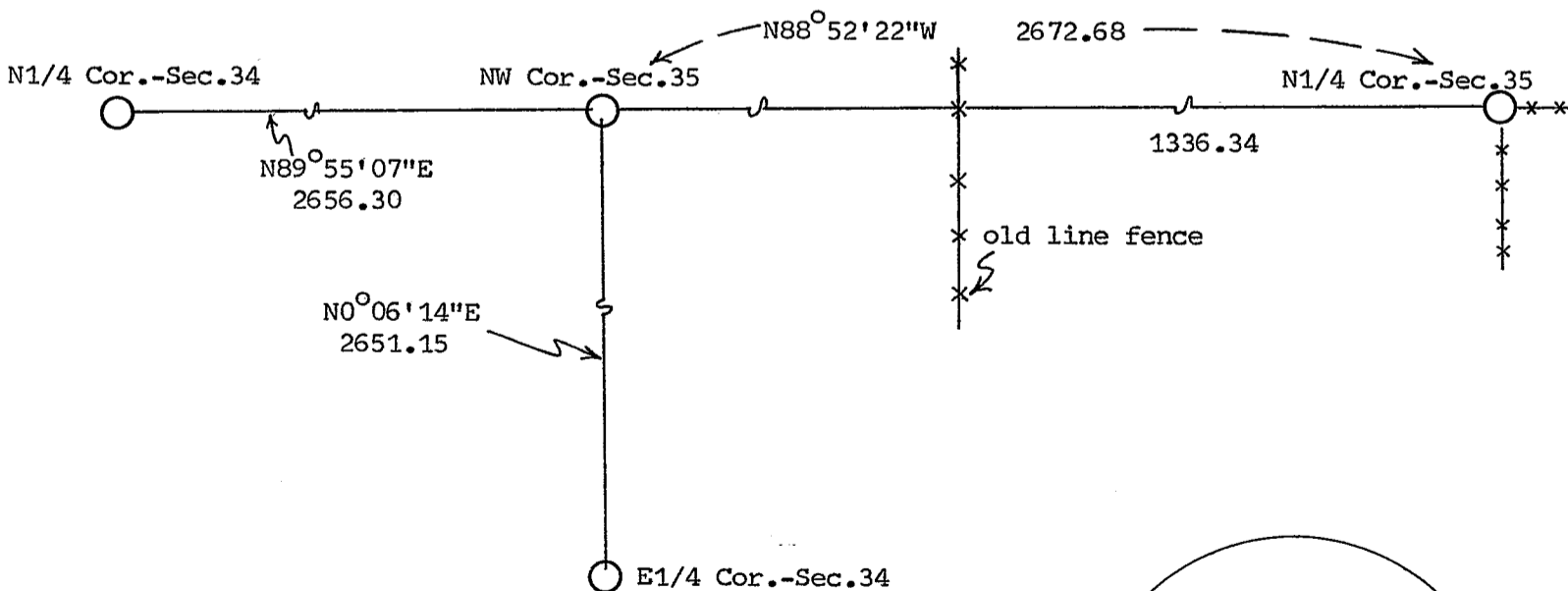
RECORD OF DURABLE WITNESS MONUMENTS  
MAGNETIC

NO	DESCRIPTION	BEARING	DISTANCE
1	Set 1" Iron Pipe on edge of woods	N 89 E	81.20 Ft.
2	Set P.K. Nail in 14" White Oak, Dbl. Blz.	S 22 E	215.40 Ft.
3	Compass Bearing on Old Windmill	N 55 W	— — —
4	Compass Bearing on Silo	N 35 E	— — —



MAP SHOWING DISTANCE AND DIRECTION TO OTHER PUBLIC LAND SURVEY CORNERS USED FOR REESTABLISHING THE CORNER

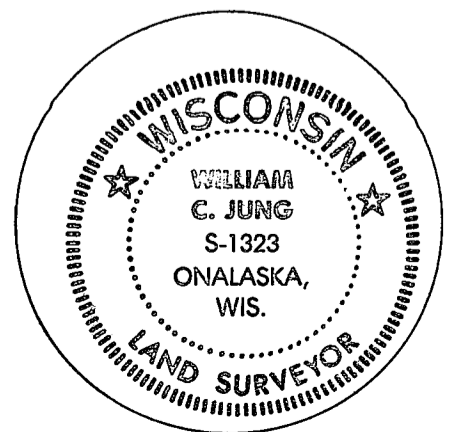
(not to scale)



I, William C. Jung, Deputy County Surveyor  
HEREBY CERTIFY THAT THE CORNER LOCATION SHOWN ON THIS RECORD  
WAS DETERMINED BY ME OR UNDER MY DIRECTION AND CONTROL AND  
THAT THIS U. S. PUBLIC LAND SURVEY MONUMENT RECORD IS CORRECT  
AND COMPLETE TO THE BEST OF MY KNOWLEDGE AND BELIEF.

William C. Jung  
Signature

8/4/88  
Date



Seal