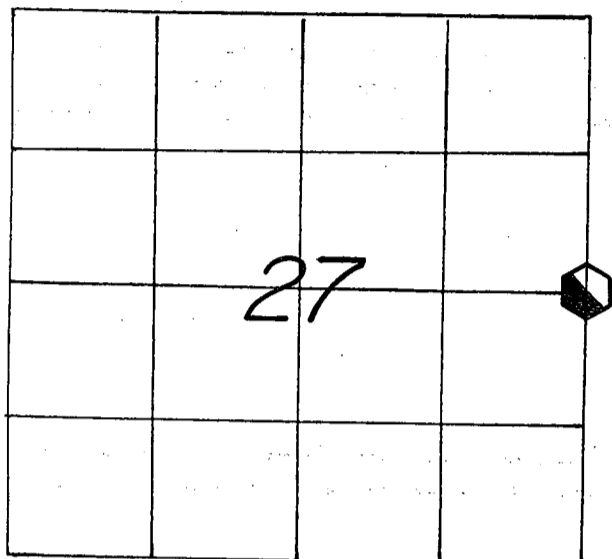


21505272000

## U. S. PUBLIC LAND SURVEY MONUMENT RECORD

SECTION 27 T 15 N, R 5 W, TOWN OF WASHINGTON

LA CROSSE COUNTY



LOCATION OF LANDMARK

CREW: **WILLIAM C. JUNG**  
**PETER F. FOLLANSBEE**  
 DATE: **9/12/2005**

WISCONSIN COORDINATE SYSTEM	
North	638,199.254
East	1,717,297.952
Theta Angle	
Horiz. Order	
Vert. Order	
DATUM:	1983('91)
TYPE OF LANDMARK	
30" ALUMINUM BERNTSEN MARKER.	
BEARINGS ARE REFERENCED TO	
GRID NORTH AS PER SECTION DATA.	

Describe any record evidence, monument evidence, testimonial evidence or any other material evidence you considered and whether the monument was found or restored through acceptance of an obliterated evidence location.

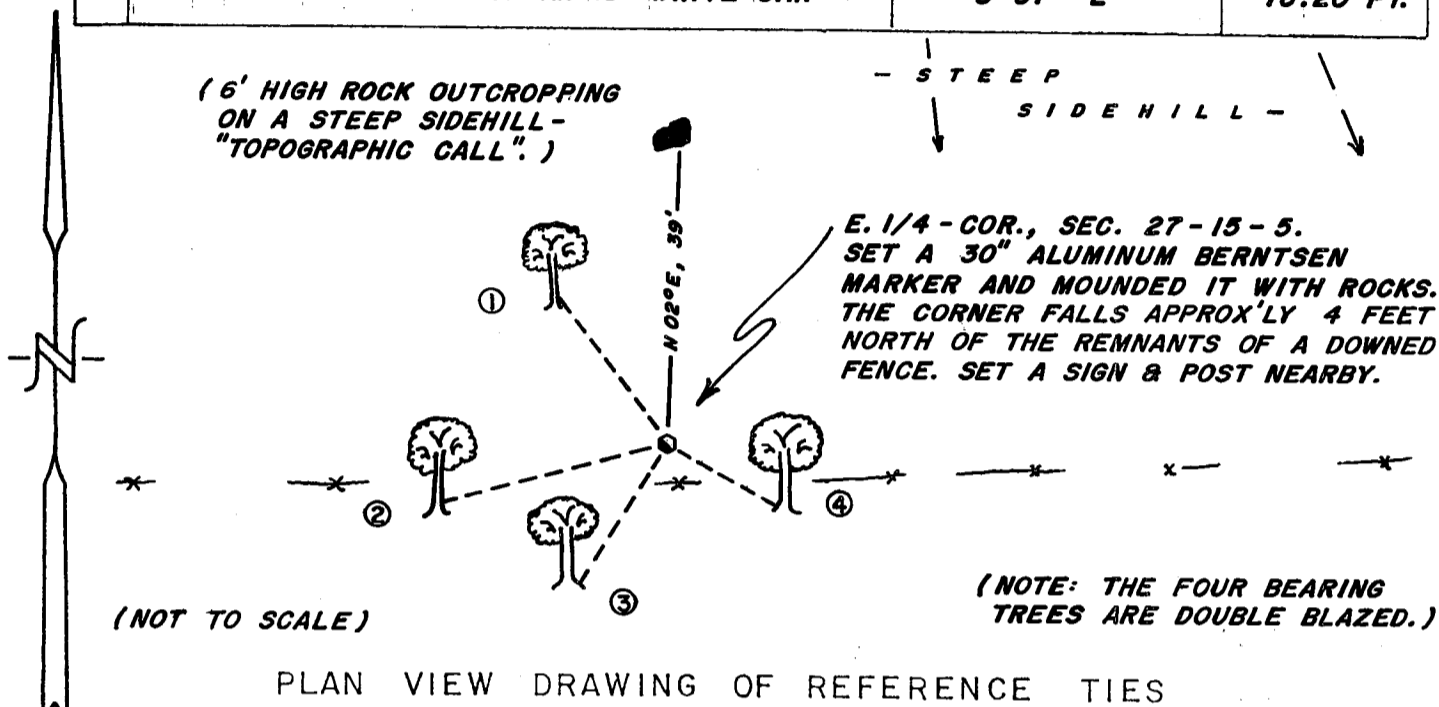
In his 1846 notes Deputy Surveyor Alfred Brown stated that there was a "sand rock 6 ft. high N2<sup>o</sup>E 59 links" from the corner. Pete and I believe that we found Brown's "rock" and set the corner from it using Brown's original call. We set a 30" Berntsen at the corner and mounded it with rocks. The corner falls about 4 feet North of a downed East-West fence.

Describe or show any material discrepancy between the location of the restored corner and that of the corner previously restored or reestablished.

On his CSM for the Evenstads, dated 4/24/2000, Chris Fechner shows that he set a 3/4" iron bar at this corner. We could not find an iron bar at this corner, any corner ties, nor any evidence that anyone had recently been to the corner. No tie sheet was filed with this office either.

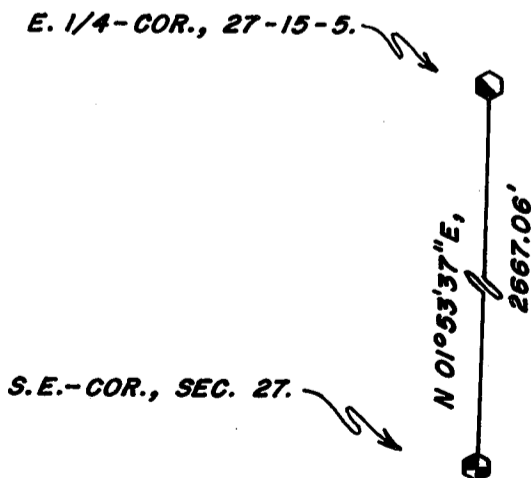
RECORD OF DURABLE WITNESS MONUMENTS

NO	DESCRIPTION	MAGNETIC	
		BEARING	DISTANCE
1	SET A NAIL IN N.E.-SIDE OF A 12" WHITE OAK	N 37° W	23.65 FT.
2	SET A NAIL IN S.E.-SIDE OF A 15-1/2" WHITE OAK	S 75° W	30.01 FT.
3	SET A NAIL IN N.W.-SIDE OF A 17" WHITE OAK	S 32° W	21.52 FT.
4	SET A NAIL IN N.-SIDE OF AN 18" WHITE OAK	S 61° E	16.20 FT.



MAP SHOWING DISTANCE AND DIRECTION TO OTHER PUBLIC LAND SURVEY CORNERS USED FOR REESTABLISHING THE CORNER

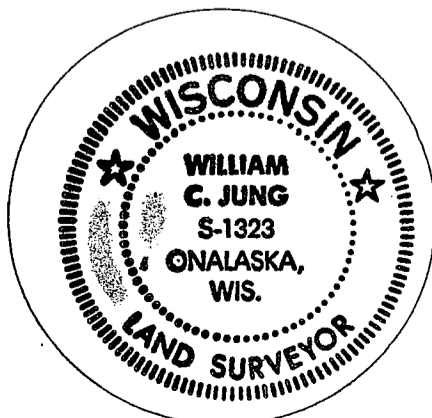
(GRID BEARINGS AND DISTANCES)  
 (GRID FACTOR: 0.999898977)  
 (NOT TO SCALE)



I, WILLIAM G. JUNG, COUNTY SURVEYOR  
 HEREBY CERTIFY THAT THE CORNER LOCATION SHOWN ON THIS RECORD  
 WAS DETERMINED BY ME OR UNDER MY DIRECTION AND CONTROL AND  
 THAT THIS U. S. PUBLIC LAND SURVEY MONUMENT RECORD IS CORRECT  
 AND COMPLETE TO THE BEST OF MY KNOWLEDGE AND BELIEF.

William G. Jung  
 Signature

9/26/05  
 Date



Seal