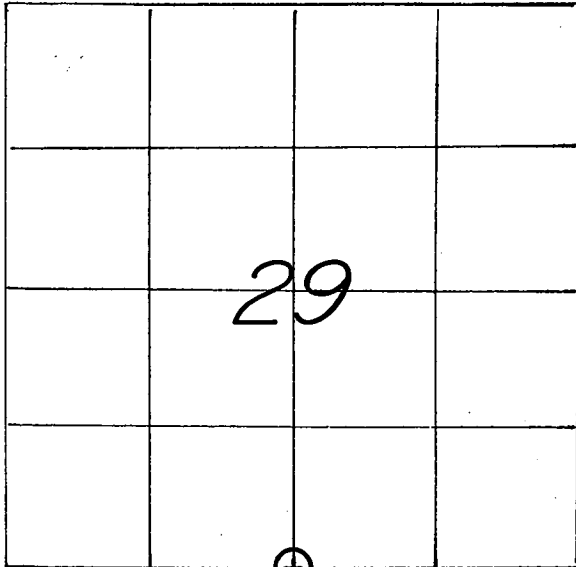


U. S. PUBLIC LAND SURVEY MONUMENT RECORD

SECTION 29 T 15 N, R 5 W, TOWN OF WASHINGTON
LA CROSSE COUNTY



LOCATION OF LANDMARK

CREW: WILLIAM C. JUNG
PETER F. FOLLANSBEE
DATE: 4/09/2001

WISCONSIN COORDINATE SYSTEM

North 635,714.866

East 1,703,931.270

Theta Angle

Horiz. Order

Vert. Order

DATUM: '83 ('91)

TYPE OF LANDMARK

3/4" x 30" IRON BAR WITH AN ALUMINUM CAP.

BEARINGS ARE REFERENCED TO
GRID NORTH AS PER SECTION DATA.

Describe any record evidence, monument evidence, testimonial evidence or any other material evidence you considered and whether the monument was found or restored through acceptance of an obliterated evidence location.

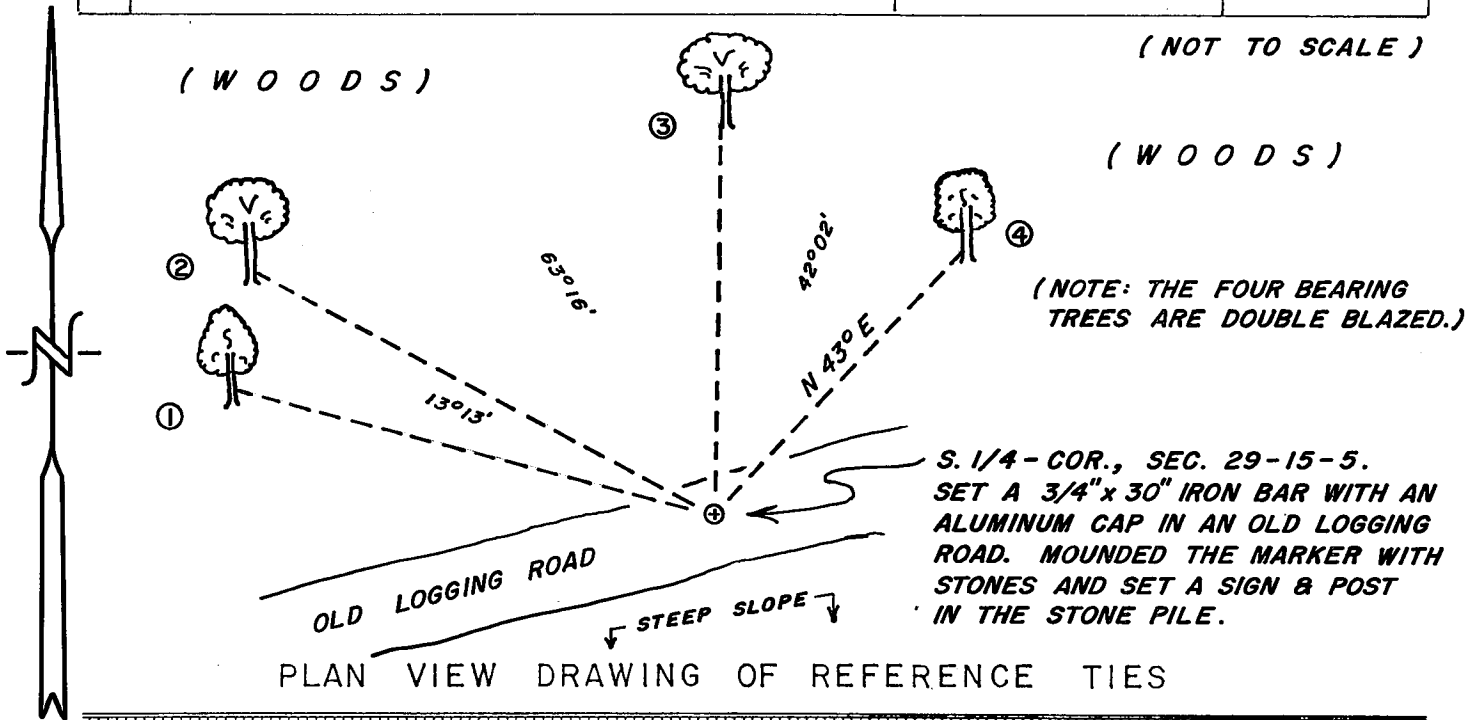
This corner was set on line and proportionately between the section corner to the West and the 1/16th corner to the East. At the Southwest corner of Section 29 we had previously found an original bearing tree and original line tree. At the S.1/16-S.E.1/4 of Section 29 we found the "mound of stone" called for by Middlebrook in his 1876 survey. The corner was monumented with an iron bar with cap in an old logging road. There was no sign of Middlebrook's bearing trees.

Describe or show any material discrepancy between the location of the restored corner and that of the corner previously restored or reestablished.

NONE KNOWN.

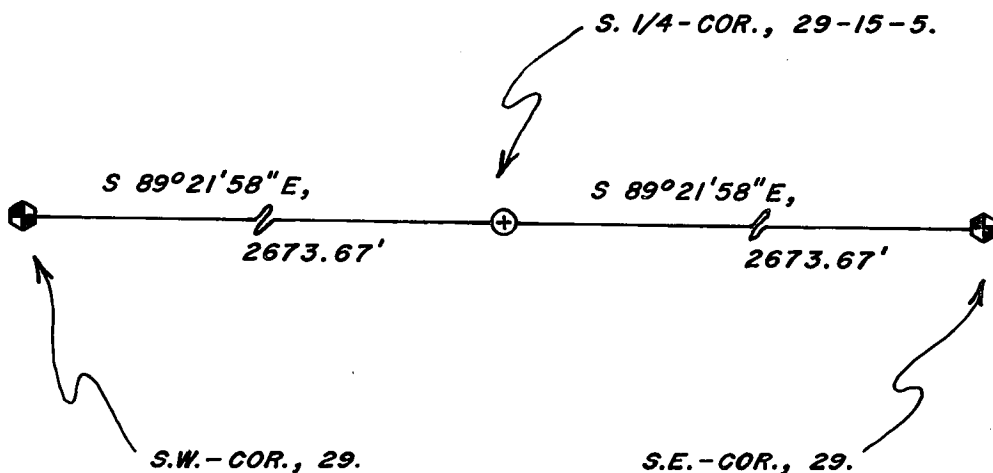
RECORD OF DURABLE WITNESS MONUMENTS
MAGNETIC

NO	DESCRIPTION	BEARING	DISTANCE
1	SET A P.K. NAIL IN S.W.-SIDE OF A 5-1/2" HICKORY	N 76° W	51.51 FT.
2	SET A P.K. NAIL IN S.W.-SIDE OF A 9-1/2" WHITE OAK	N 62° W	53.86 FT.
3	SET A P.K. NAIL IN W.-SIDE OF AN 8" WHITE OAK	N 01° E	40.85 FT.
4	SET A P.K. NAIL IN S.E.-SIDE OF A 10-1/2" ASH	N 43° E	37.40 FT.



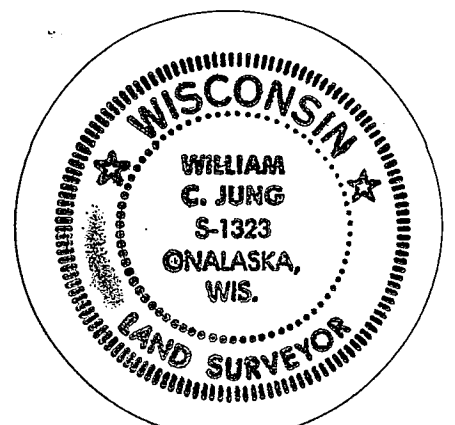
MAP SHOWING DISTANCE AND DIRECTION TO OTHER PUBLIC LAND SURVEY CORNERS USED FOR REESTABLISHING THE CORNER

(GRID BEARINGS & DISTANCES)
(GRID FACTOR: 0.999898977)



I, WILLIAM C. JUNG, COUNTY SURVEYOR
HEREBY CERTIFY THAT THE CORNER LOCATION SHOWN ON THIS RECORD WAS DETERMINED BY ME OR UNDER MY DIRECTION AND CONTROL AND THAT THIS U. S. PUBLIC LAND SURVEY MONUMENT RECORD IS CORRECT AND COMPLETE TO THE BEST OF MY KNOWLEDGE AND BELIEF.

William C. Jung 7/9/01
Signature Date



Seal