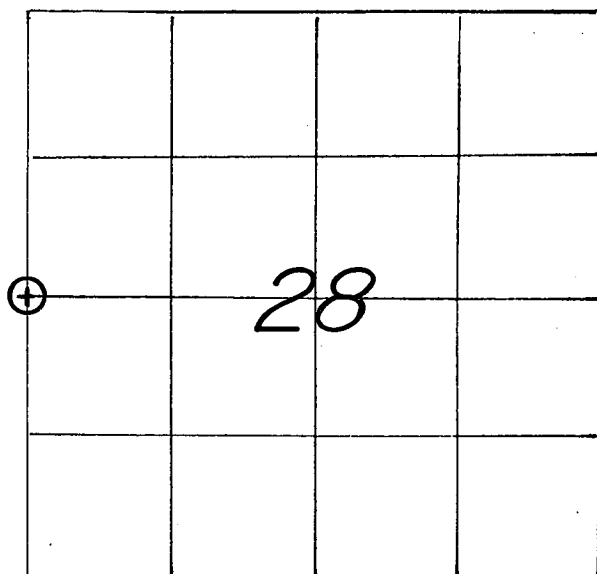


U. S. PUBLIC LAND SURVEY MONUMENT RECORD

SECTION 28 T 15 N, R 5 W, TOWN OF WASHINGTON

LA CROSSE COUNTY



LOCATION OF LANDMARK

CREW: WILLIAM C. JUNG
 PETER F. FOLLANSBEE
 DATE: 4/10/2001

WISCONSIN COORDINATE SYSTEM

North 638,365.084

East 1,706,682.014

Theta Angle

Horiz. Order

Vert. Order

DATUM: '83('91)

TYPE OF LANDMARK

3/4" x 30" IRON BAR WITH AN ALUMINUM CAP.

BEARINGS ARE REFERENCED TO

GRID NORTH AS PER SECTION DATA.

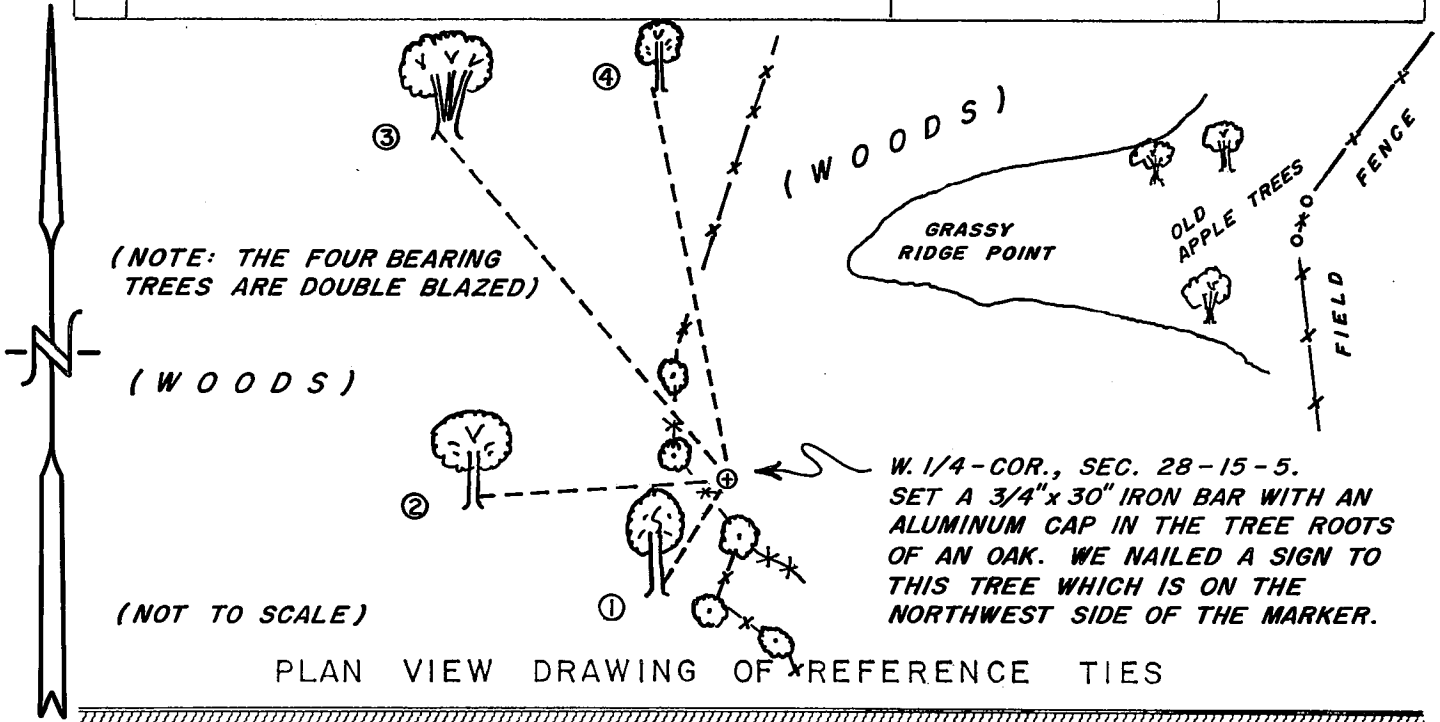
Describe any record evidence, monument evidence, testimonial evidence or any other material evidence you considered and whether the monument was found or restored through acceptance of an obliterated evidence location.

I set this corner off of what I believe to be the original bearing tree to the Southeast. The tree is dead and hardened, almost as if "petrified". This tree is scarred as if someone had cut into the tree years ago to expose the original blaze. This action probably killed the tree. I have seen similar cases in the past. The corner was monumented with an iron bar with cap. Set as such the corner also fits the occupied conditions, that being the old line fence to the West projected East, and the old line fence to the South projected to the North.
 Describe or show any material discrepancy between the location of the restored corner and that of the corner previously restored or reestablished.

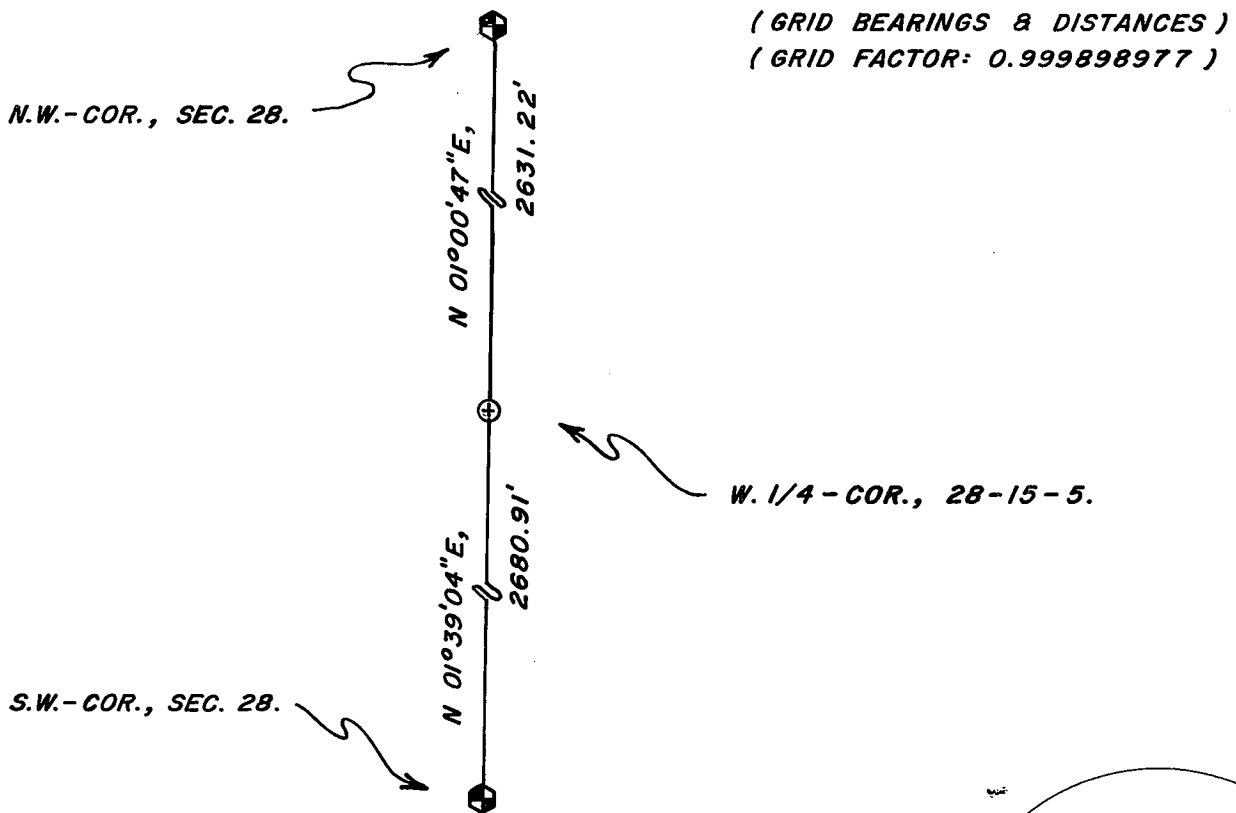
NONE KNOWN.

RECORD OF DURABLE WITNESS MONUMENTS
MAGNETIC

| NO | DESCRIPTION | BEARING | DISTANCE |
|----|--|---------|-----------|
| 1 | SET A NAIL IN S.E.-SIDE OF AN 18-1/2" HICKORY (w/old scar?) | S 32° W | 12.53 FT. |
| 2 | SET A NAIL IN N.-SIDE OF A 13" BURR OAK | S 86° W | 25.95 FT. |
| 3 | SET A NAIL IN S.W.-SIDE OF A LARGE 3-TRUNK W. OAK | N 40° W | 47.30 FT. |
| 4 | SET A NAIL IN S.W.-SIDE OF AN 11" ELM | N 11° W | 41.45 FT. |

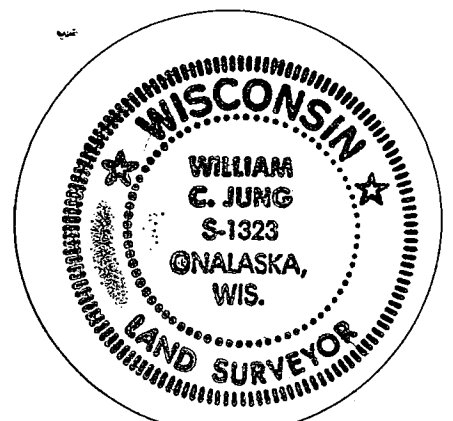


MAP SHOWING DISTANCE AND DIRECTION TO OTHER PUBLIC LAND SURVEY CORNERS USED FOR REESTABLISHING THE CORNER



I, WILLIAM C. JUNG, COUNTY SURVEYOR
HEREBY CERTIFY THAT THE CORNER LOCATION SHOWN ON THIS RECORD WAS DETERMINED BY ME OR UNDER MY DIRECTION AND CONTROL AND THAT THIS U. S. PUBLIC LAND SURVEY MONUMENT RECORD IS CORRECT AND COMPLETE TO THE BEST OF MY KNOWLEDGE AND BELIEF.

William C. Jung 7/9/01
Signature Date



Seal