

US PUBLIC LAND SURVEY MONUMENT RECORD-ADDENDUM

2019-3

TIE SHEET ADDENDUM-21505310020 (LA CROSSE COUNTY INDEX 168A)

SECTION 31 T. 15 N., R. 5 W. TOWN OF WASHINGTON

LA CROSSE COUNTY, WI.

WISCONSIN COORDINATE SYSTEM

DATUM: SPC- WI SOUTH NAD83(91)

NORTH: 630,436.345'

EAST: 1,698,677.455'

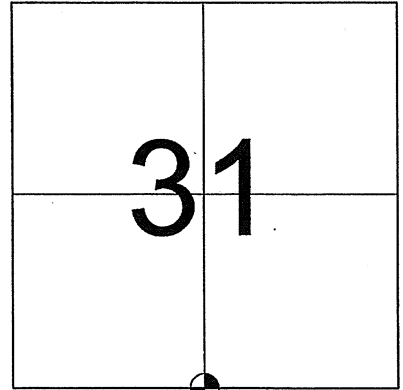
ELEVATION: 806.73'

TYPE OF MONUMENT: LUNDE

CREW: BRYAN MEYER, COREY HUGHES

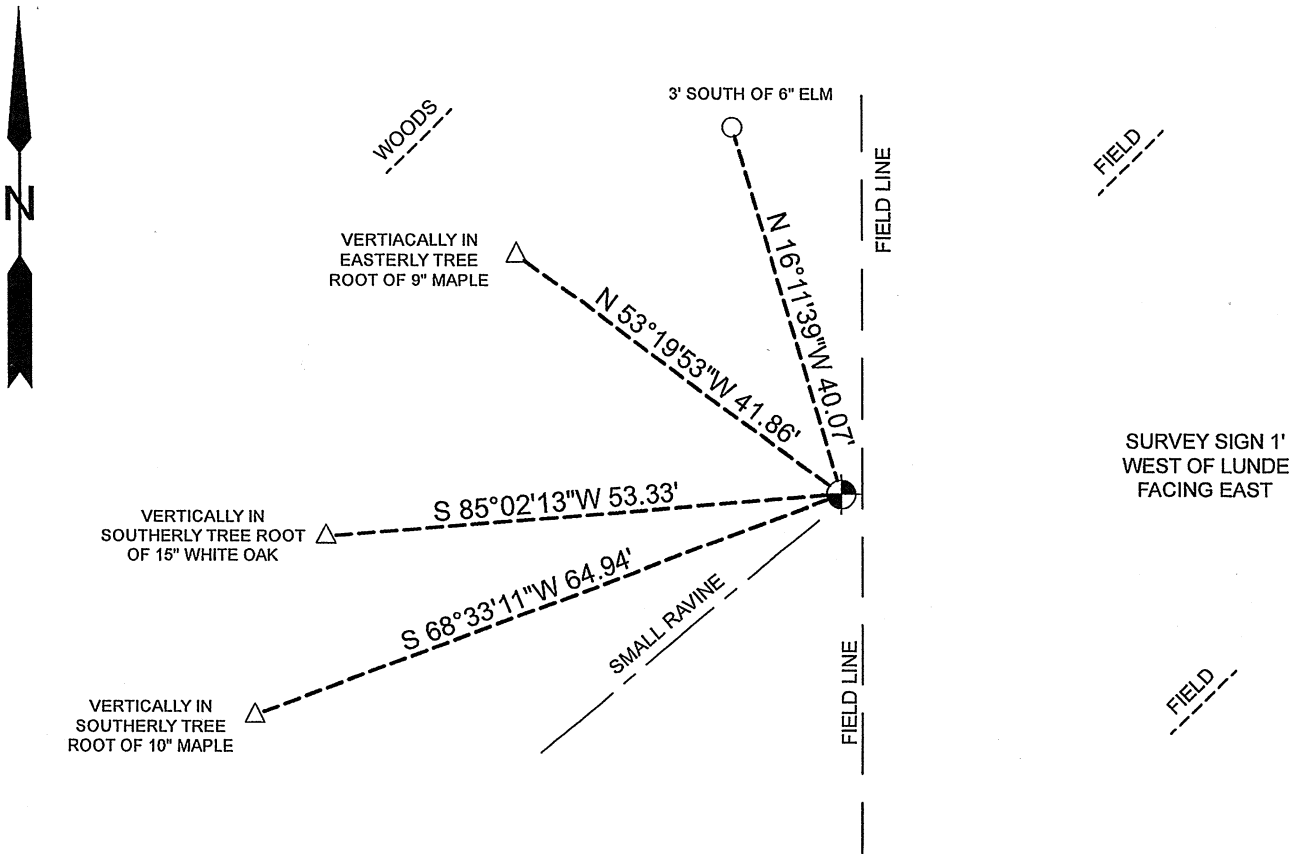
DATE: JANUARY 16, 2019

WEATHER: SUNNY 30°



LOCATION OF LANDMARK

Bryan Meyer and I performed maintenance on this corner on January 16, 2019. We found the Lunde Marker of record at the corner. We did not find any of W. Jung's ties and set 4 new ties as shown.



LEGEND

- FOUND LUNDE MARKER
- SET 3/4"X18" IRON BAR (WEIGHING 1.50LBS./FT)
- △ SET MAG NAIL WITH WASHER



Corey Hughes
 Corey M. Hughes

3-15-2019
 Date

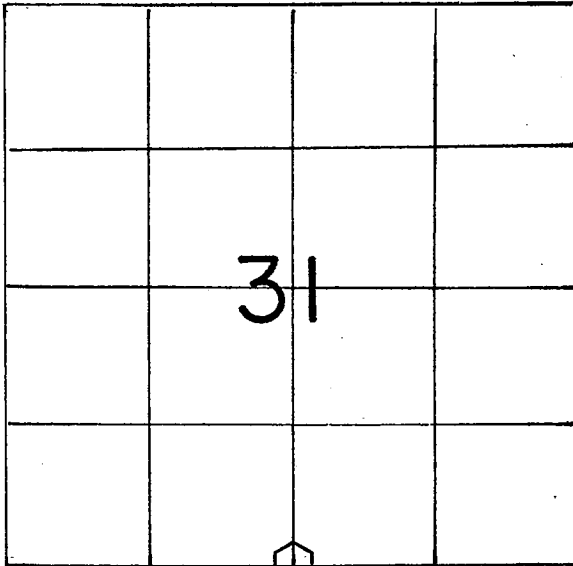
I, Corey M. Hughes, hereby certify that the corner location shown on this record was determined by me or under my direction and control and that this U.S. Public Land Survey Monument Record Addendum is correct and complete to the best of my knowledge and belief.

ROMPORTL ID:
 21505310020

U. S. PUBLIC LAND SURVEY MONUMENT RECORD

SECTION 31 T 15 N, R 5 W, TOWN OF WASHINGTON

LA CROSSE COUNTY



LOCATION OF LANDMARK

Crew: WILLIAM C. JUNG
 PETER F. FOLLANSBEE
 Date: 3/21/1995

WISCONSIN COORDINATE SYSTEM

North

East

Theta Angle

Horiz. Order

Vert. Order

TYPE OF LANDMARK

Set brass cap Lunde marker.

BEARINGS ARE REFERENCED TO

Grid North.

Describe any record evidence, monument evidence, testimonial evidence or any other material evidence you considered and whether the monument was found or restored through acceptance of an obliterated evidence location.

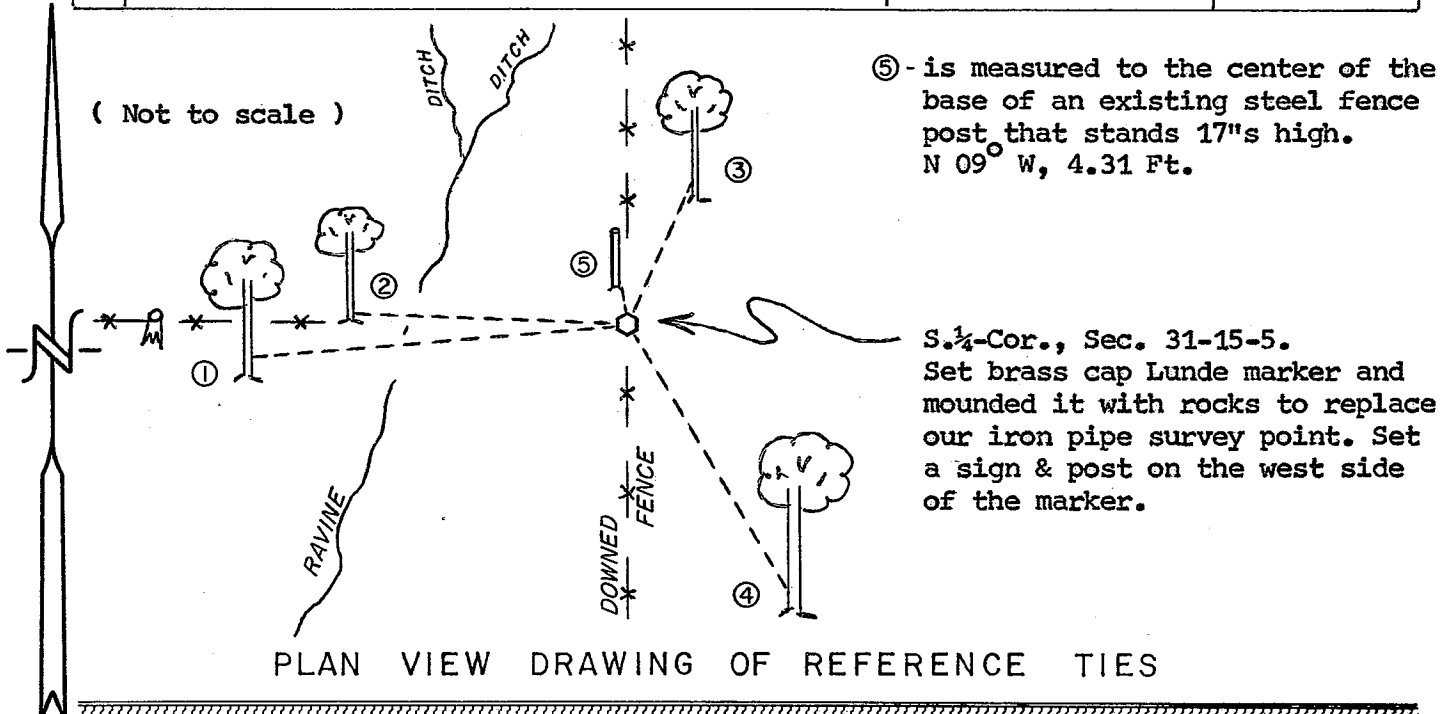
S. Middlebrook, LaCrosse County Surveyor, resurveyed Section 31 in 1876. I found what I believe to be one of his bearing trees. I set a Lunde using this tree to the Southeast. This tree is now a very large rotted stump. Setting the corner as such, it falls at the occupied corner, matching fences to the North, South, and West.

Describe or show any material discrepancy between the location of the restored corner and that of the corner previously restored or reestablished.

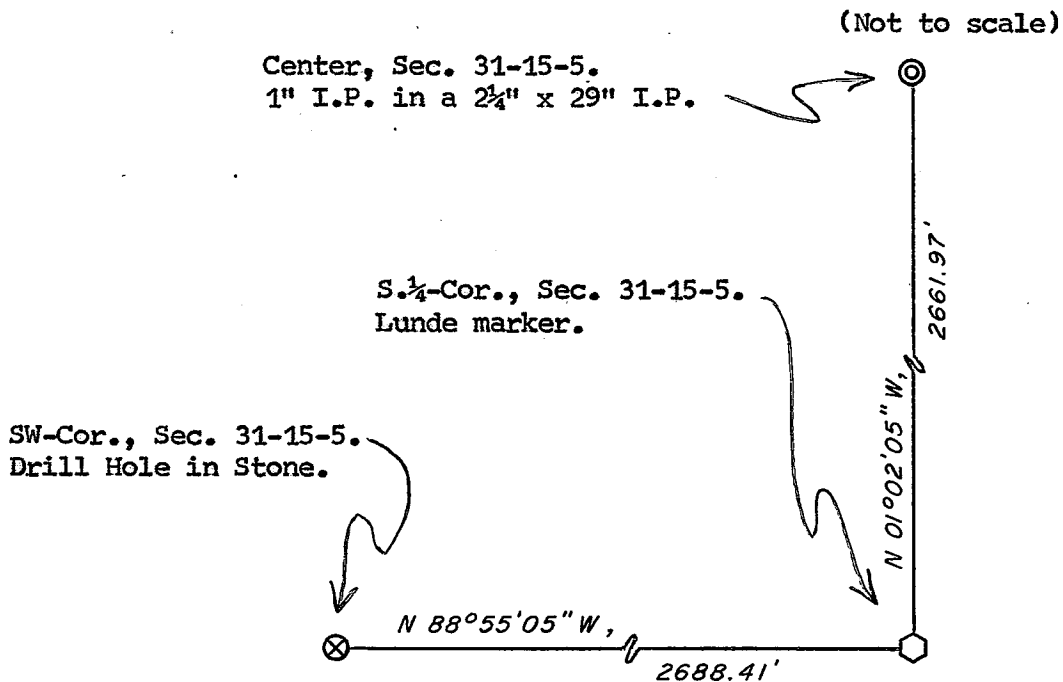
None Known.

RECORD OF DURABLE WITNESS MONUMENTS

NO	DESCRIPTION	MAGNETIC	
		BEARING	DISTANCE
1	Ex. Spike in east face of 9" Box Elder(Ex. blaze)	S 85° W	Slope 39.15 Ft.
2	Set P.K. Nail in N.-side 4" Hickory(single blaze)	N 88° W	28.45 Ft.
3	Set P.K. Nail in SE-side 3 1/4" Hickory(unblazed)	N 24° E	16.10 Ft.
4	Ex. Spike in N.W. face of 12" Oak(Ex. blaze)	S 31° E	31.97 Ft.



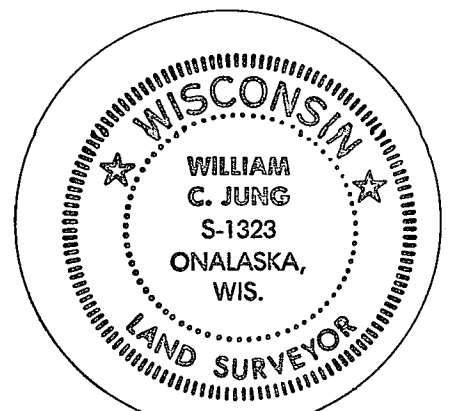
MAP SHOWING DISTANCE AND DIRECTION TO OTHER PUBLIC LAND SURVEY CORNERS USED FOR REESTABLISHING THE CORNER



I, William C. Jung, County Surveyor
 HEREBY CERTIFY THAT THE CORNER LOCATION SHOWN ON THIS RECORD
 WAS DETERMINED BY ME OR UNDER MY DIRECTION AND CONTROL AND
 THAT THIS U. S. PUBLIC LAND SURVEY MONUMENT RECORD IS CORRECT
 AND COMPLETE TO THE BEST OF MY KNOWLEDGE AND BELIEF.

William C. Jung
 Signature

3/31/95
 Date



Seal