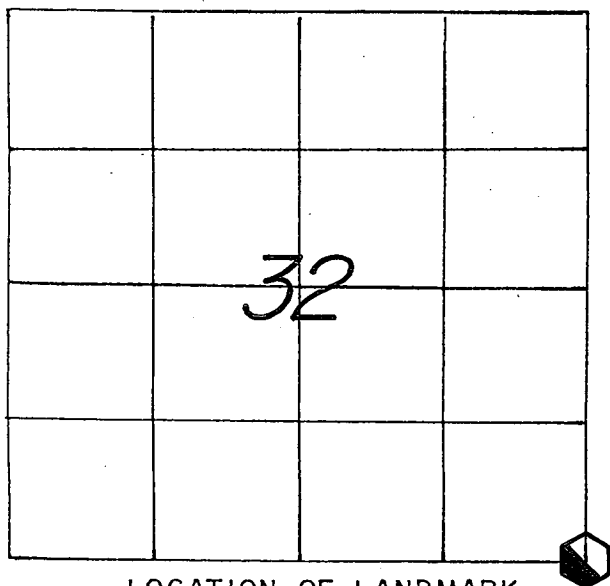


21505320000

U. S. PUBLIC LAND SURVEY MONUMENT RECORD

SECTION 32 T 15 N, R 5 W, TOWN OF WASHINGTON

LA CROSSE COUNTY



LOCATION OF LANDMARK

CREW: **WILLIAM C. JUNG**
PETER F. FOLLANSBEE
 DATE: 10/26/2006

WISCONSIN COORDINATE SYSTEM

North 630,349.768

East 1,706,622.987

Theta Angle

Horiz. Order

Vert. Order

DATUM: 1983('91)

TYPE OF LANDMARK

30" ALUMINUM BERNTSEN MARKER.

BEARINGS ARE REFERENCED TO

GRID NORTH AS PER SECTION DATA.

Describe any record evidence, monument evidence, testimonial evidence or any other material evidence you considered and whether the monument was found or restored through acceptance of an obliterated evidence location.

Uriah Briggs set a wood post for the original government corner in 1845. Middlebrook, the LaCrosse County Surveyor, found Briggs' corner in 1876. William Knower, the Vernon County Surveyor, found Briggs' corner in 1883 and 1888. We found both of the original bearing trees, still standing, one dead and the other dying. I reset the section corner using these trees and Briggs' calls. The corner fell at a very old four-way fence intersection location. I set a 30" Berntsen at the corner and mounded it

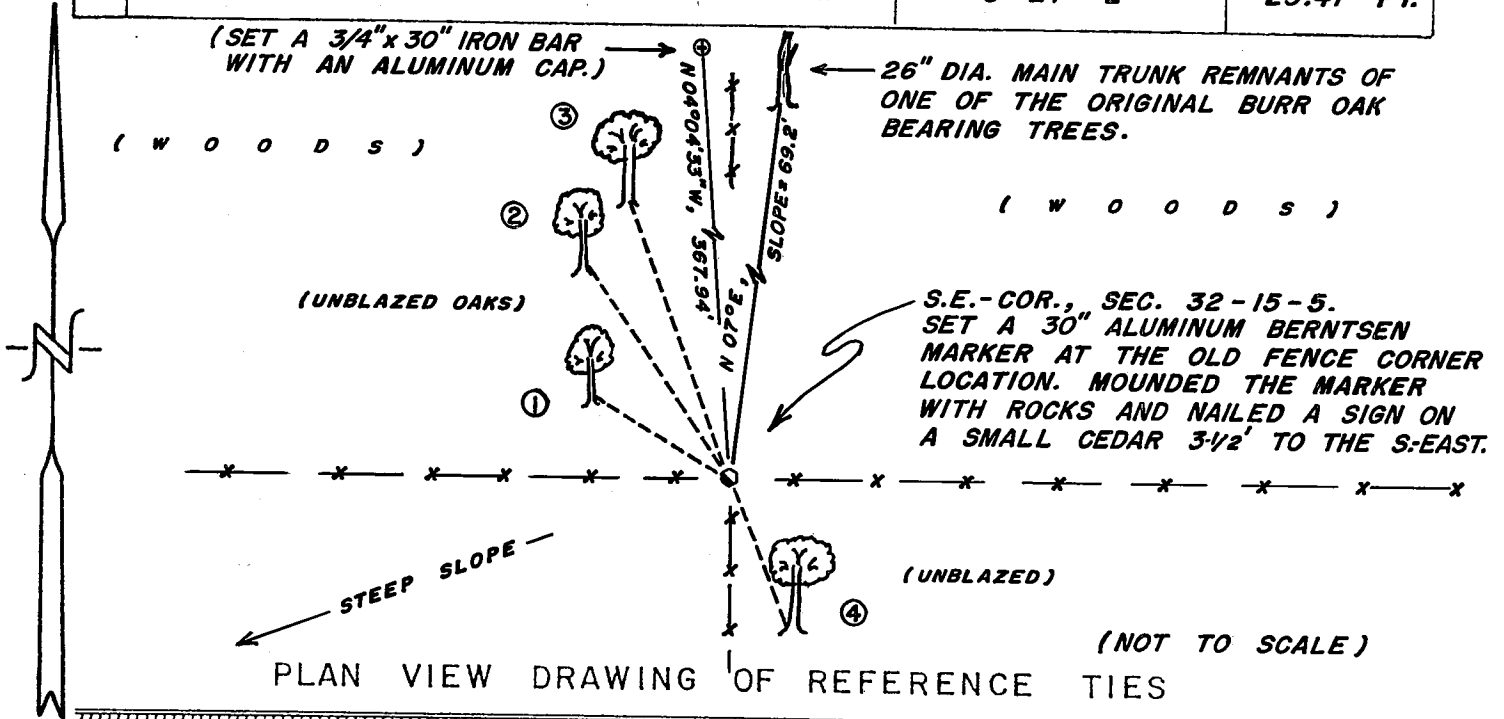
Describe or show any material discrepancy between the location of the restored with rocks. corner and that of the corner previously restored or reestablished.

NONE KNOWN.

(OVER)

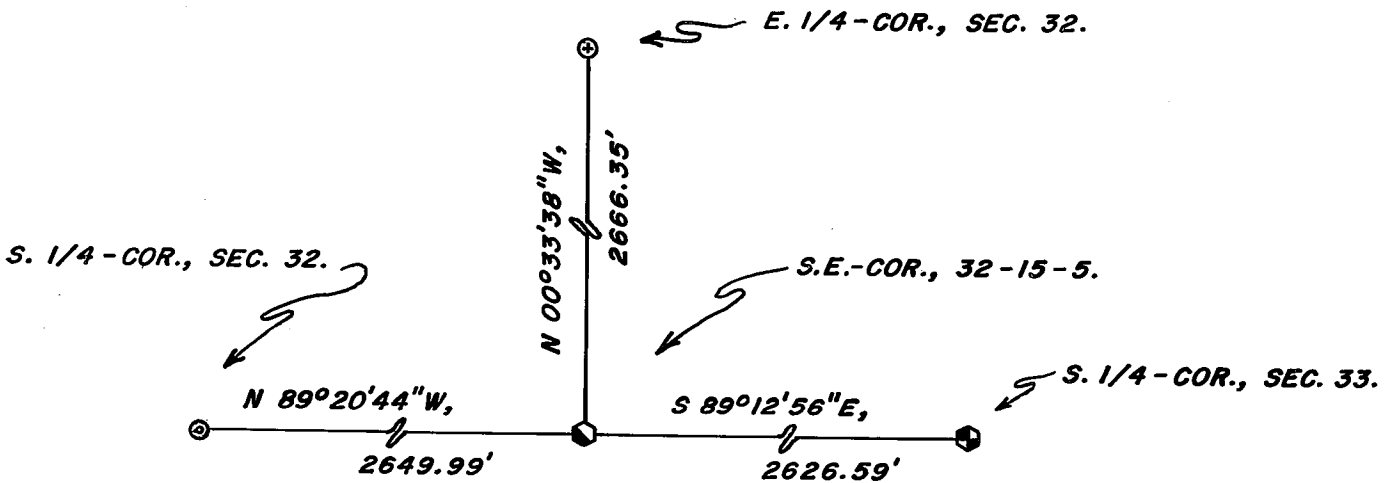
RECORD OF DURABLE WITNESS MONUMENTS

NO	DESCRIPTION	MAGNETIC	
		BEARING	DISTANCE
1	SET A NAIL IN N.E.-SIDE OF A 4" OAK	N 59° W	24.00 FT.
2	SET A NAIL IN N.E.-SIDE OF A 5-1/2" OAK	N 34° W	39.08 FT.
3	CENTER OF A DYING BURR OAK WITH AN OLD SCAR	N 20° W	45.2 FT.
4	SET A NAIL IN W.-SIDE OF A 22" BURR OAK	S 21° E	25.47 FT.



MAP SHOWING DISTANCE AND DIRECTION TO OTHER PUBLIC LAND SURVEY CORNERS USED FOR REESTABLISHING THE CORNER

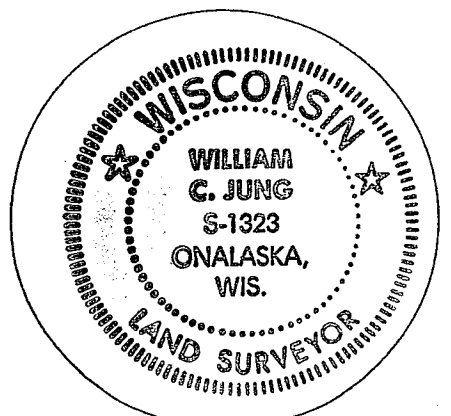
(GRID BEARINGS AND DISTANCES)
 (GRID FACTOR: 0.999895)
 (NOT TO SCALE)



I, WILLIAM C. JUNG, COUNTY SURVEYOR
 HEREBY CERTIFY THAT THE CORNER LOCATION SHOWN ON THIS RECORD
 WAS DETERMINED BY ME OR UNDER MY DIRECTION AND CONTROL AND
 THAT THIS U. S. PUBLIC LAND SURVEY MONUMENT RECORD IS CORRECT
 AND COMPLETE TO THE BEST OF MY KNOWLEDGE AND BELIEF.

William C. Jung
 Signature

11/20/06
 Date



Seal