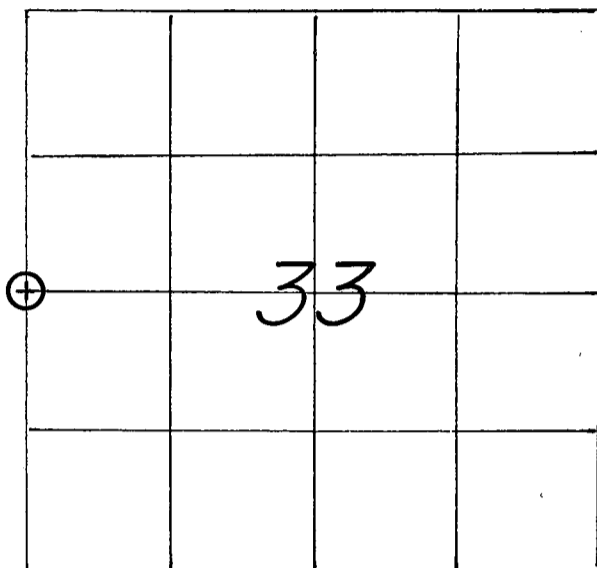


U. S. PUBLIC LAND SURVEY MONUMENT RECORD

SECTION 33 T 15 N, R 5 W, TOWN OF WASHINGTON

LA CROSSE COUNTY



LOCATION OF LANDMARK

CREW: WILLIAM C. JUNG
 PETER F. FOLLANSBEE
 DATE: 4/03/2001

WISCONSIN COORDINATE SYSTEM

North 633,015.987

East 1,706,596.896

Theta Angle

Horiz. Order

Vert. Order

DATUM: '83('91)

TYPE OF LANDMARK

3/4" x 30" IRON BAR WITH AN ALUMINUM CAP.

BEARINGS ARE REFERENCED TO

GRID NORTH AS PER SECTION DATA.

Describe any record evidence, monument evidence, testimonial evidence or any other material evidence you considered and whether the monument was found or restored through acceptance of an obliterated evidence location.

I set this corner off of what I believe to be the stump of the original* bearing tree to the Southwest. Set as such this location also fits the old occupied corner, matching the old line fences to the West and South. The corner was monumented with an iron bar with cap.

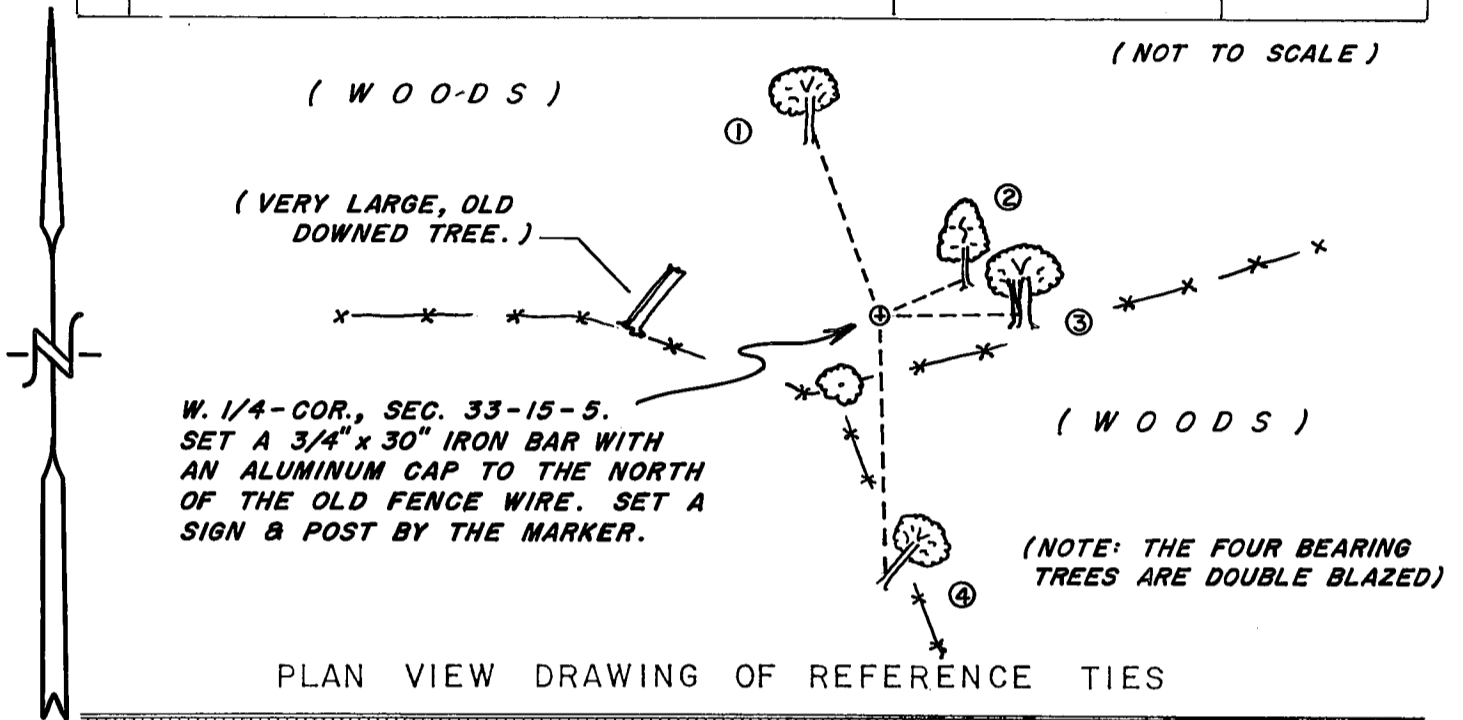
* (also has a newer "scar" on it)

Describe or show any material discrepancy between the location of the restored corner and that of the corner previously restored or reestablished.

NONE KNOWN.

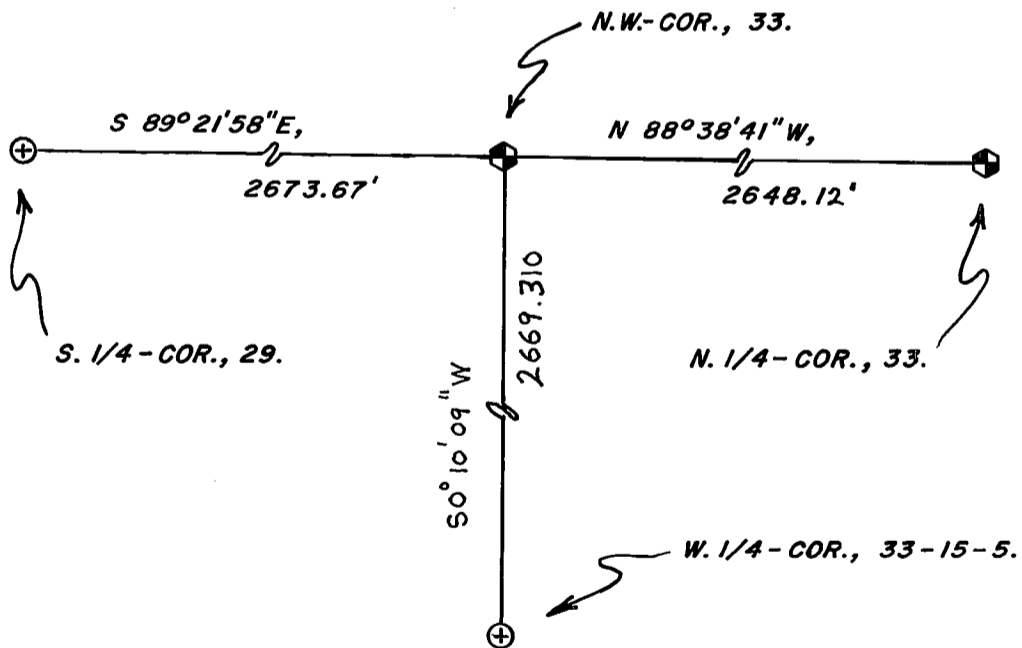
RECORD OF DURABLE WITNESS MONUMENTS
MAGNETIC

NO	DESCRIPTION	BEARING	DISTANCE
1	SET A NAIL IN W.-SIDE OF A 17" OAK	N 19° W	39.69 FT.
2	SET A NAIL IN N.W.-SIDE OF A 6-1/2" HICKORY	N 66° E	19.19 FT.
3	SET A NAIL IN N.-SIDE OF A 22" DOUBLE OAK	N 89° E	29.20 FT.
4	SET A NAIL IN W.-SIDE OF AN 18" WHITE OAK	S 01° E	53.89 FT.



MAP SHOWING DISTANCE AND DIRECTION TO OTHER PUBLIC LAND SURVEY CORNERS USED FOR REESTABLISHING THE CORNER

(GRID BEARINGS AND DISTANCES)
(GRID FACTOR: 0.999898977)



I, WILLIAM C. JUNG, COUNTY SURVEYOR
HEREBY CERTIFY THAT THE CORNER LOCATION SHOWN ON THIS RECORD WAS DETERMINED BY ME OR UNDER MY DIRECTION AND CONTROL AND THAT THIS U. S. PUBLIC LAND SURVEY MONUMENT RECORD IS CORRECT AND COMPLETE TO THE BEST OF MY KNOWLEDGE AND BELIEF.

William C. Jung 7/9/01
Signature Date

